

© 2007 TFH ARCHITECTS

SHERIDAN HEIGHTS
 PROPOSED CONDOMINIUMS AT
 135 SHERIDAN STREET, PORTLAND MAINE
 FOR SHERIDAN STREET LLC



TFH ARCHITECTS
 100 COMMERCIAL STREET
 PORTLAND MAINE 04101
 TELEPHONE 207 775 6141
 ARCHITECTURE PLANNING

CONSULTANTS:
 REFER TO TITLE SHEET FOR
 CONSULTANT INFORMATION

OWNERS' REPRESENTATIVE

477 CONGRESS STREET, 5TH FLOOR,
 PORTLAND, ME 04101
 TEL: 207 523 3410

REVISIONS:

DATE: 10/01/07

PROJECT No. 507

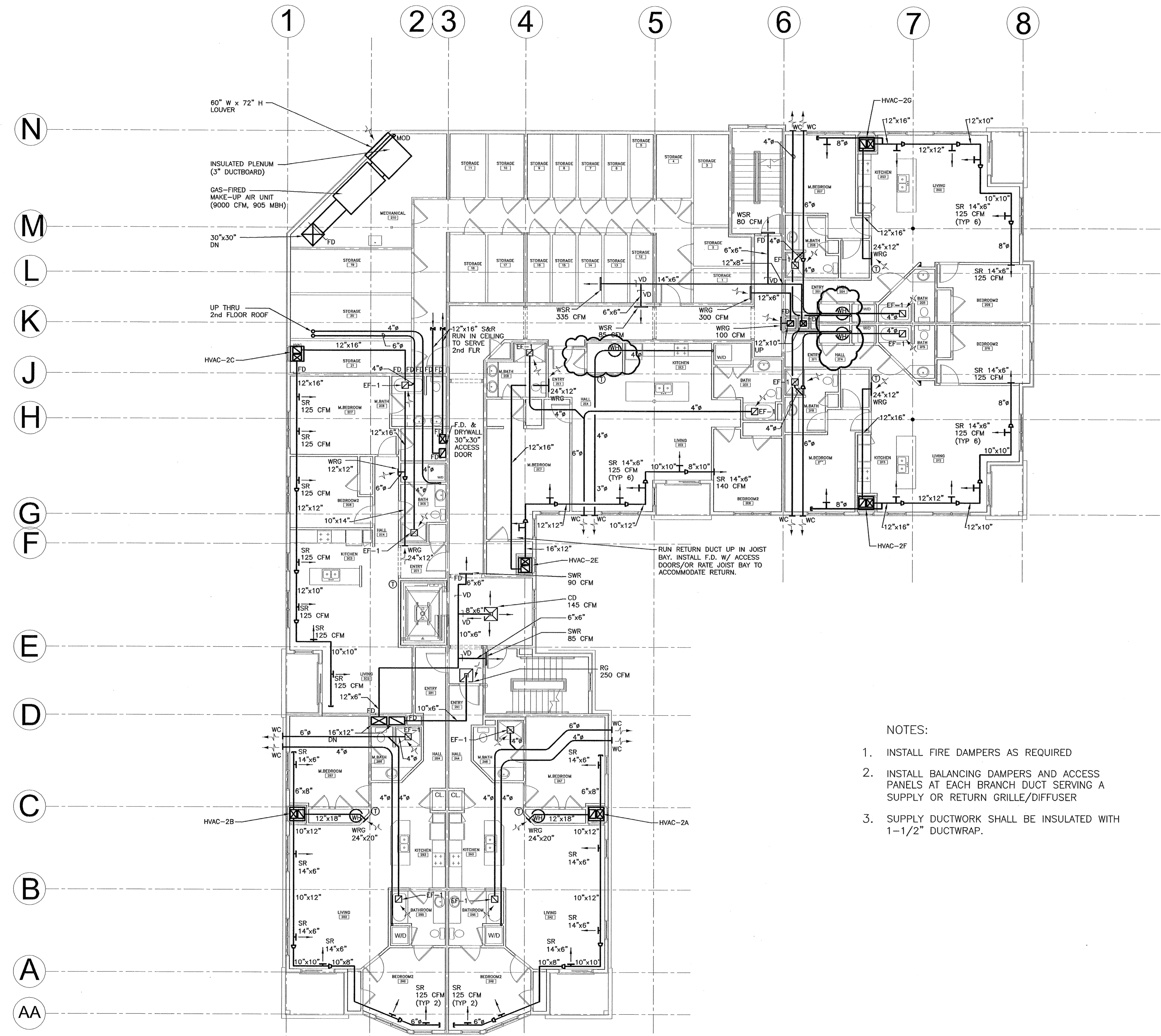
DRAWN BY: RTL,RJS

CHECKED BY: TST

SCALE: AS NOTED

SHEET TITLE:
 SECOND
 FLOOR
 MECHANICAL
 PLAN

M1.1



- NOTES:
1. INSTALL FIRE DAMPERS AS REQUIRED
 2. INSTALL BALANCING DAMPERS AND ACCESS PANELS AT EACH BRANCH DUCT SERVING A SUPPLY OR RETURN GRILLE/DIFFUSER
 3. SUPPLY DUCTWORK SHALL BE INSULATED WITH 1-1/2\" DUCTWRAP.

1 SECOND FLOOR PLAN
 A1.1 1/8" = 1'-0"

USED FOR
 REVIEW 10-1-07