

© 2007TFH ARCHITECTS

SHERIDAN HEIGHTS
PROPOSED CONDOMINIUMS AT
135 SHERIDAN STREET, PORTLAND MAINE
FOR SHERIDAN STREET LLC

TFH ARCHITECTS
100 COMMERCIAL STREET
PORTLAND MAINE 04110
TELEPHONE 207 775 614
ARCHITECTURE PLANNING

CONSULTANTS:
REFER TO TITLE SHEET FOR
CONSULTANT INFORMATION

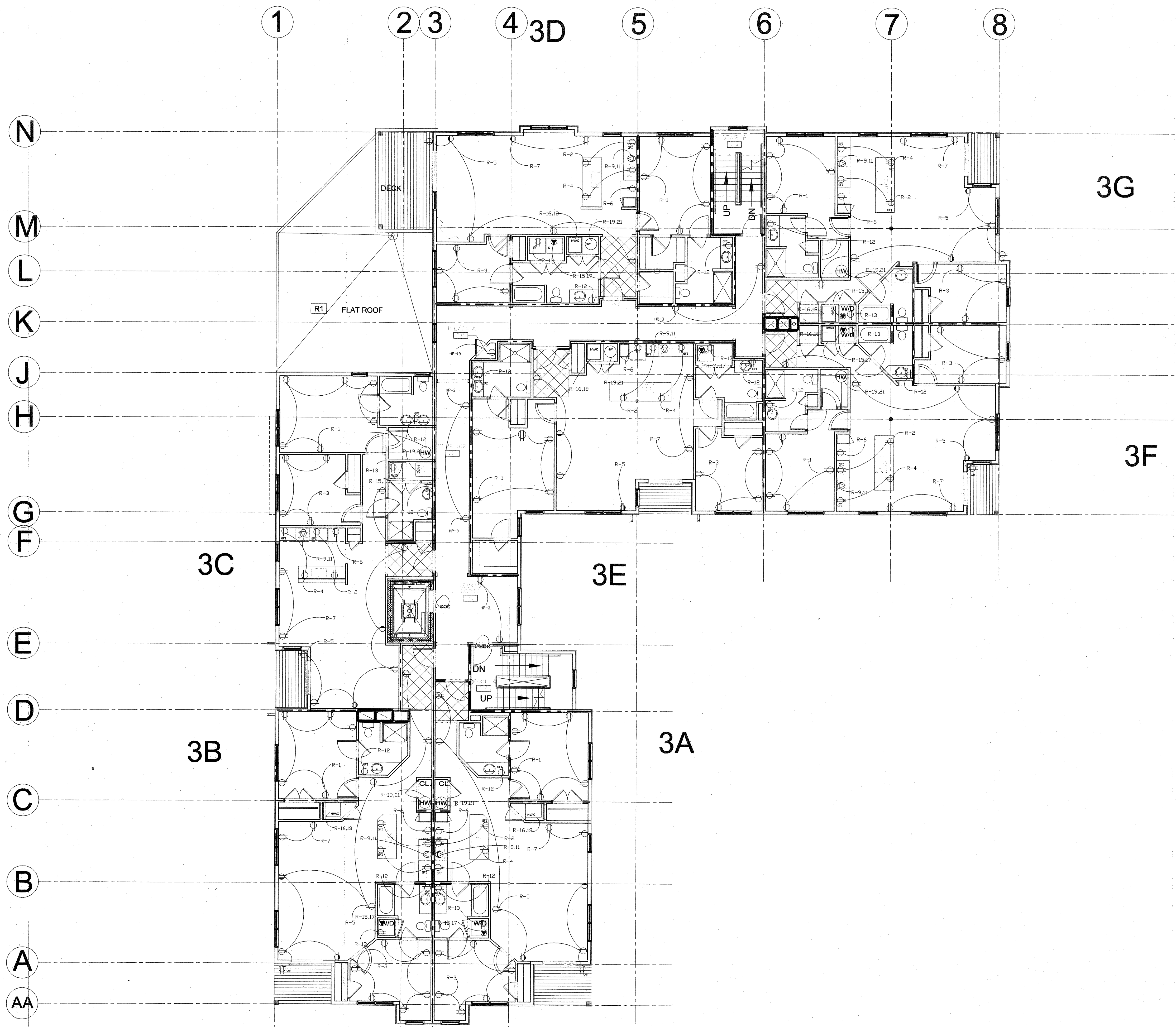
OWNERS' REPRESENTATIVE
477 CONGRESS STREET, 5TH FLOOR
PORTLAND, ME 04101
TEL: 207 523 3410

REVISIONS:

DATE: 08/25/07
PROJECT No. 507
DRAWN BY: RTL,RJS
CHECKED BY: TST
SCALE: AS NOTED

SHEET TITLE:
THIRD FLOOR
POWER PLAN

E1.2



THIRD FLOOR POWER PLAN
1/8" = 1'-0"

