

© 2007 TFH ARCHITECTS

SHERIDAN HEIGHTS PROPOSED CONDOMINIUMS AT 135 SHERIDAN STREET, PORTLAND MAINE FOR SHERIDAN STREET LLC

TFH ARCHITECTS
100 COMMERCIAL STREET
PORTLAND MAINE 04101
TELEPHONE 207 775 6141
ARCHITECTURE PLANNING

CONSULTANTS:
REFER TO TITLE SHEET FOR
CONSULTANT INFORMATION

OWNERS' REPRESENTATIVE

477 CONGRESS STREET, 5TH FLOOR,
PORTLAND, ME 04101
TEL: 207 523 3410

REVISIONS:
2/13/2007

DATE: 06/25/07

PROJECT No. 507

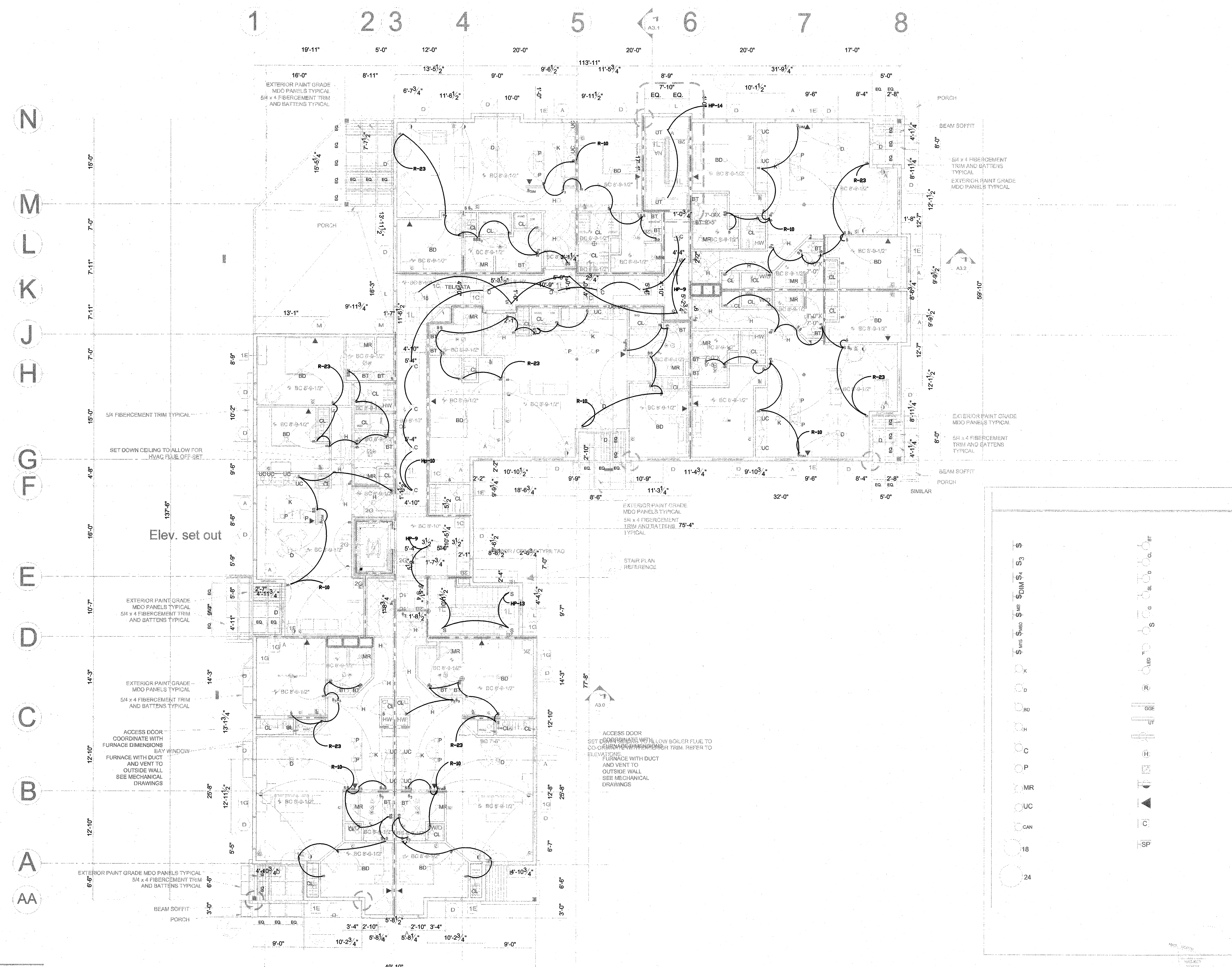
DRAWN BY: RTL,RJS

CHECKED BY: TST

SCALE: AS NOTED

SHEET TITLE:
3RD. FLOOR LIGHTING,
ELECTRICAL PANEL,
& VOICE/DATA
PLAN

E2.2



THIRD FLOOR LIGHTING PLAN
A8.2 1/8" = 1'-0"