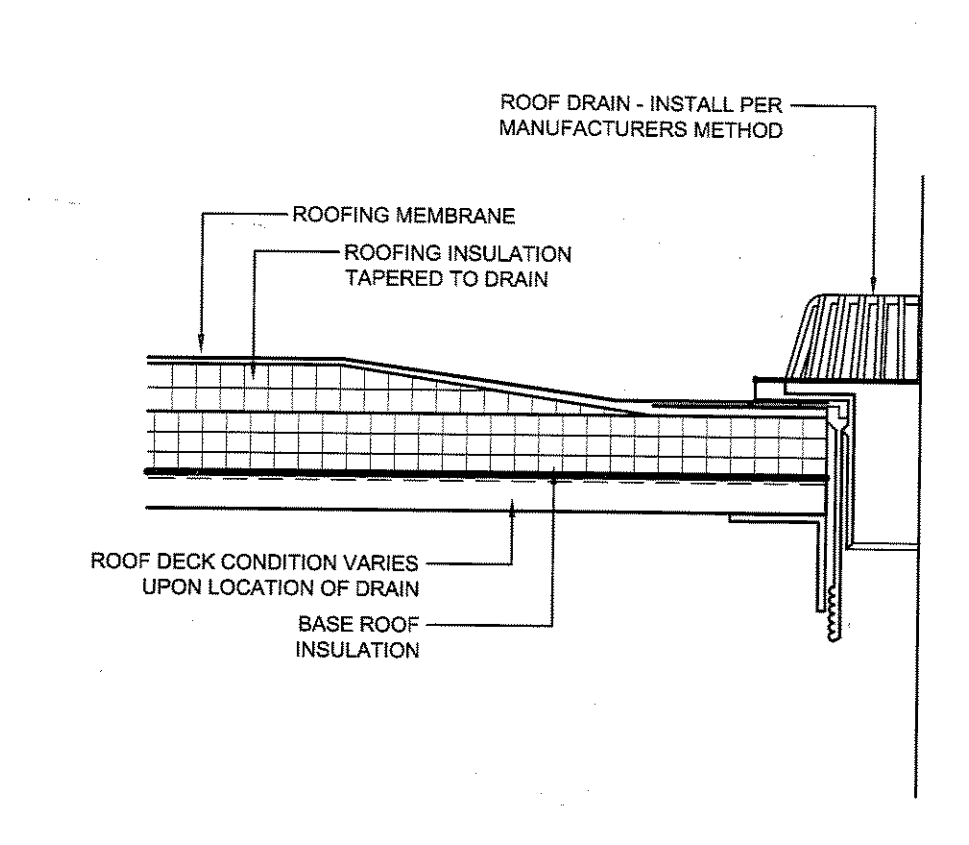
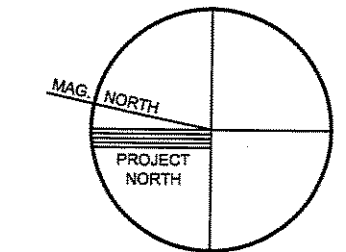
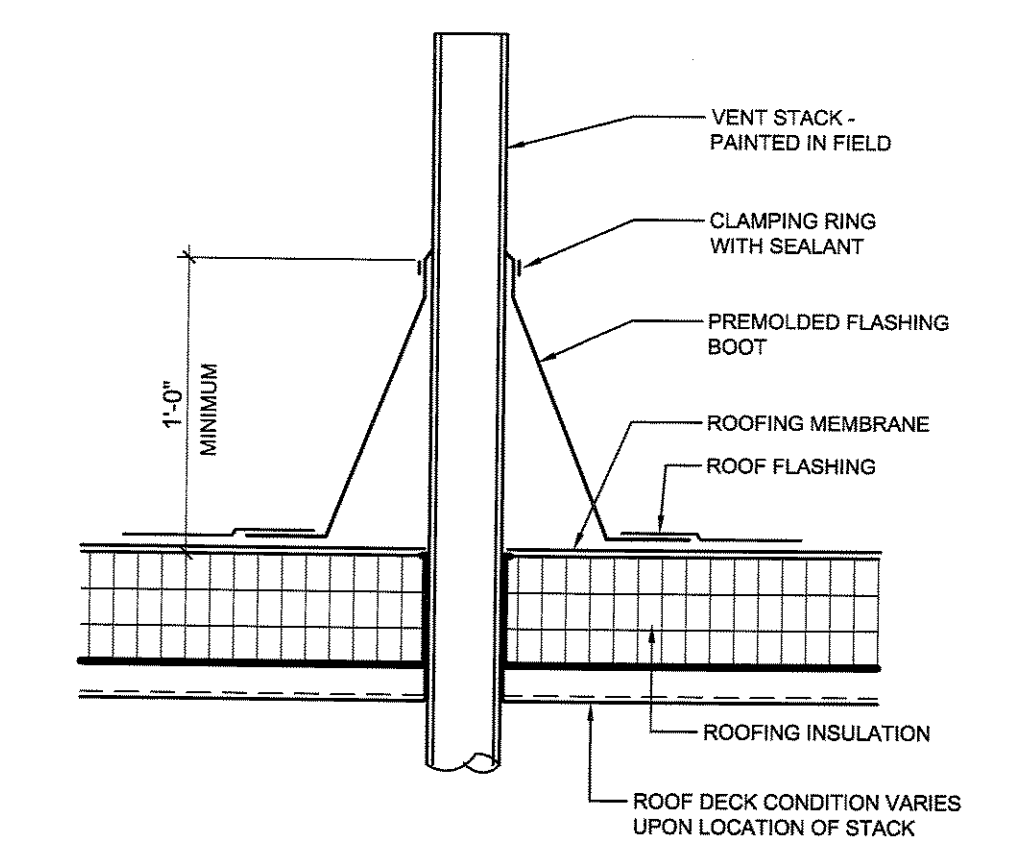


1 ROOF PLAN
A1.4 1/8" = 1'-0"

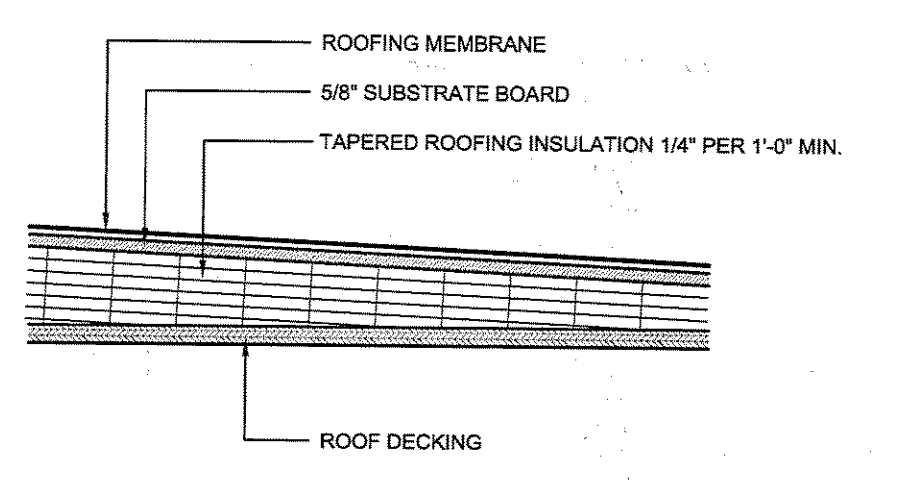
ROOF / CEILING CAVITY TO BE VENTILATED BY MEANS OF:
SOFFIT VENTS WITH A MINIMUM CLEAR VENTING AREA OF 2,200 SQUARE INCHES
AND GRAVITY ROOF VENTS WITH A MINIMUM CLEAR VENTING AREA OF 2,200 SQUARE INCHES



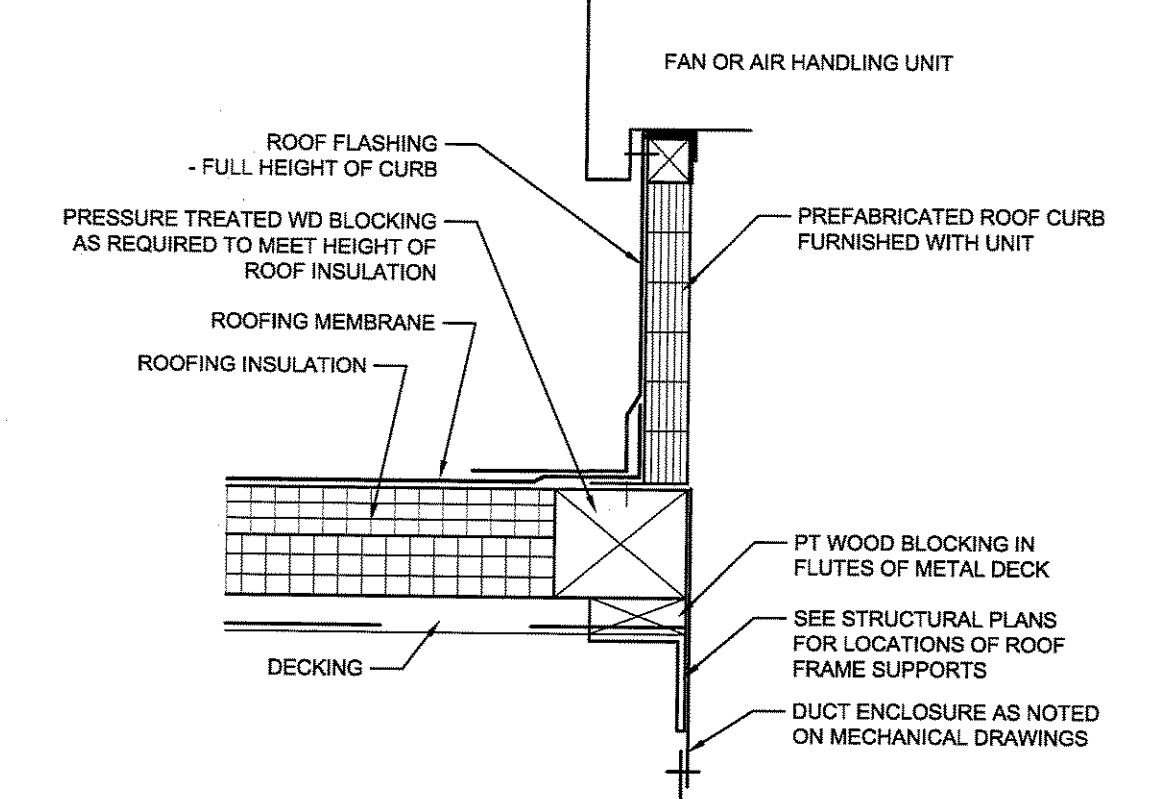
7 ROOF DRAIN DETAIL - TYPICAL
A1.4 1-1/2" = 1'-0"



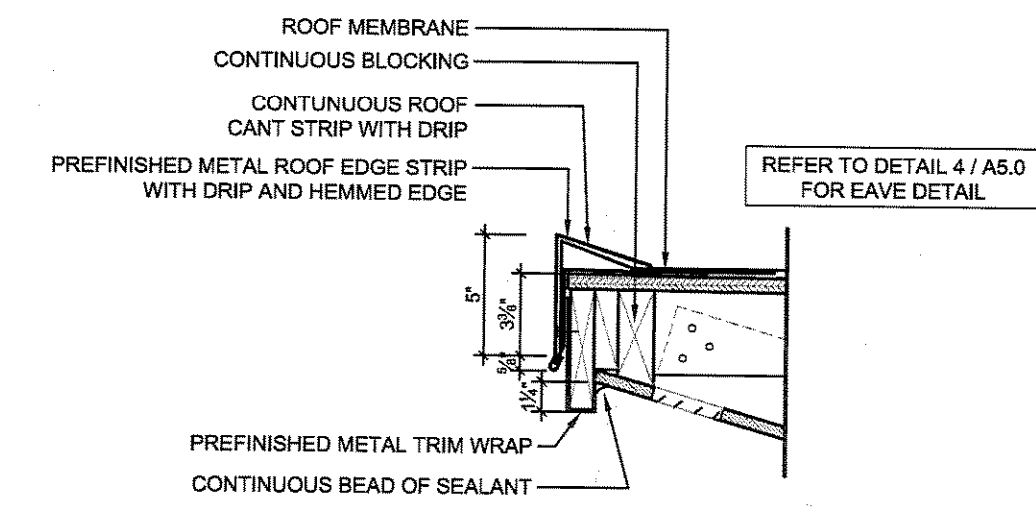
6 VENT STACK DETAIL THROUGH FLAT ROOF - TYPICAL
A1.4 1-1/2" = 1'-0"



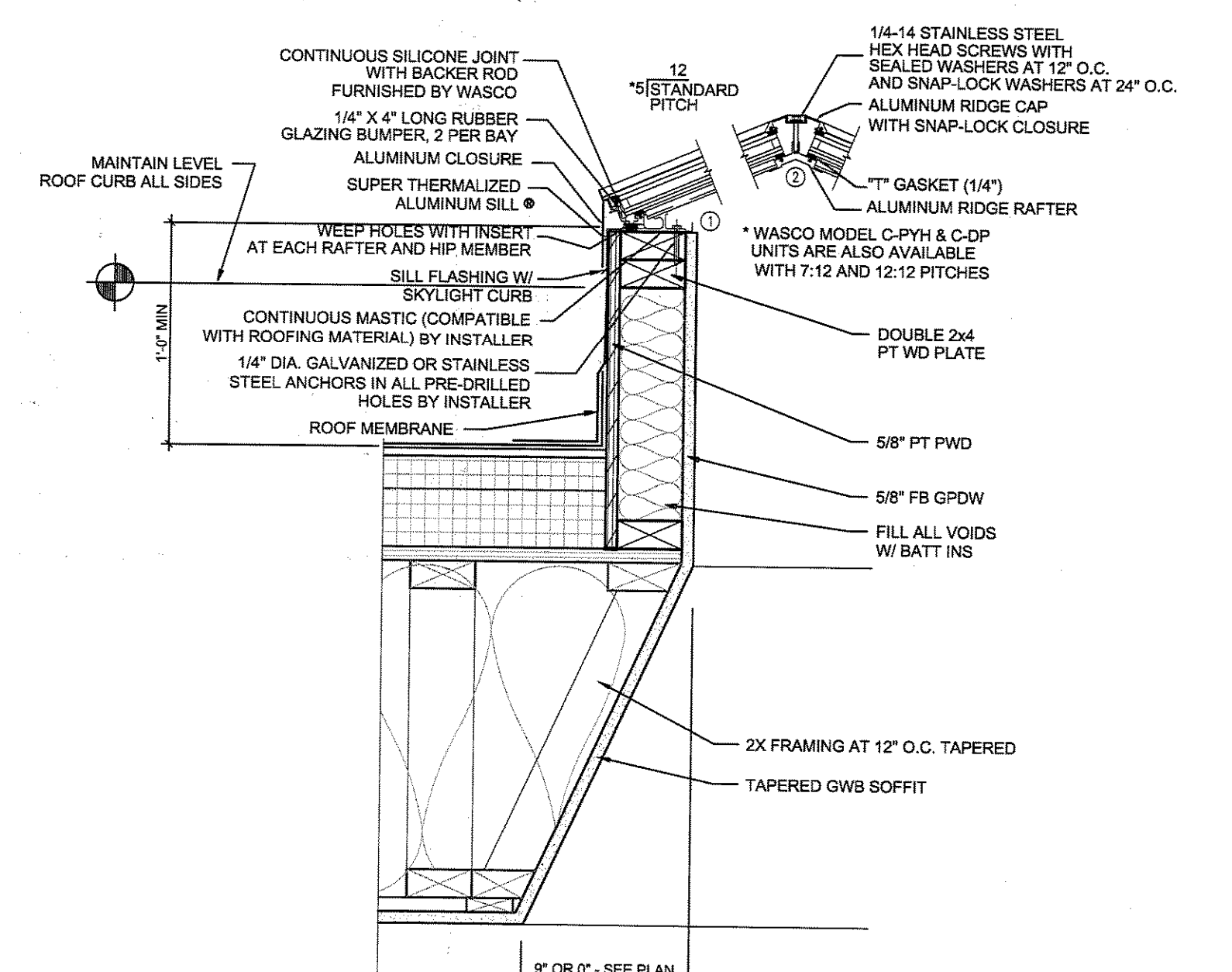
5 ROOF SYSTEM R1 - MEMBRANE ROOF DETAIL
A1.4 1-1/2" = 1'-0"



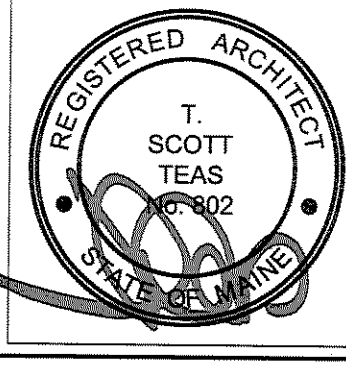
4 TYPICAL MECHANICAL UNIT CURB
A1.4 1-1/2" = 1'-0"



3 ROOF EDGE DETAIL - TYPICAL
A1.4 1-1/2" = 1'-0"



2 SKYLIGHT / CURB DETAIL - TYPICAL
A1.4 1-1/2" = 1'-0"
ADD ALTERNATE #4



© 2007 TFH ARCHITECTS

SHERIDAN HEIGHTS
PROPOSED CONDOMINIUMS AT
135 SHERIDAN STREET, PORTLAND MAINE
FOR SHERIDAN STREET LLC

TFH ARCHITECTS
100 COMMERCIAL STREET
PORTLAND MAINE 04101
TELEPHONE 207 775 6141
ARCHITECTURE PLANNING

CONSULTANTS:
REFER TO TITLE SHEET FOR
CONSULTANT INFORMATION

OWNERS' REPRESENTATIVE
shinberg
CONSULTING LLC
477 CONGRESS STREET, 5TH FLOOR,
PORTLAND, ME 04101
TEL: 207 523 3410

REVISIONS:

DATE: 06/25/07
PROJECT No. 507
DRAWN BY: RTL,RJS
CHECKED BY: TST

SCALE: AS NOTED
SHEET TITLE:
ROOF
PLAN
AND DETAILS

A1.4