



CWS Architects

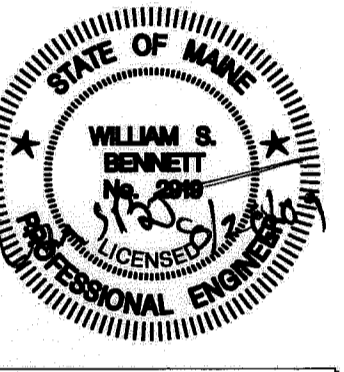
Architecture
Space Planning
Value Design

434 Cumberland Avenue
Portland, ME 04101
Phone: (207) 774-4441
Fax: (207) 774-4016

www.CWSarch.com



BENNETT
ENGINEERING
MECHANICAL - ELECTRICAL
207.855.9475



Owner:
**Avesta Munjoy
Commons, LP.**

307 Cumberland Ave.
Portland, Maine 04101
TEL. 207-553-7780

**Munjoy Commons
Apartments**

Portland, Maine

Project No: 07429

Drawing Title:

**SHAILER
SECOND FLOOR
ELECTRICAL PLAN**

Scale: 1/4" = 1'-0"

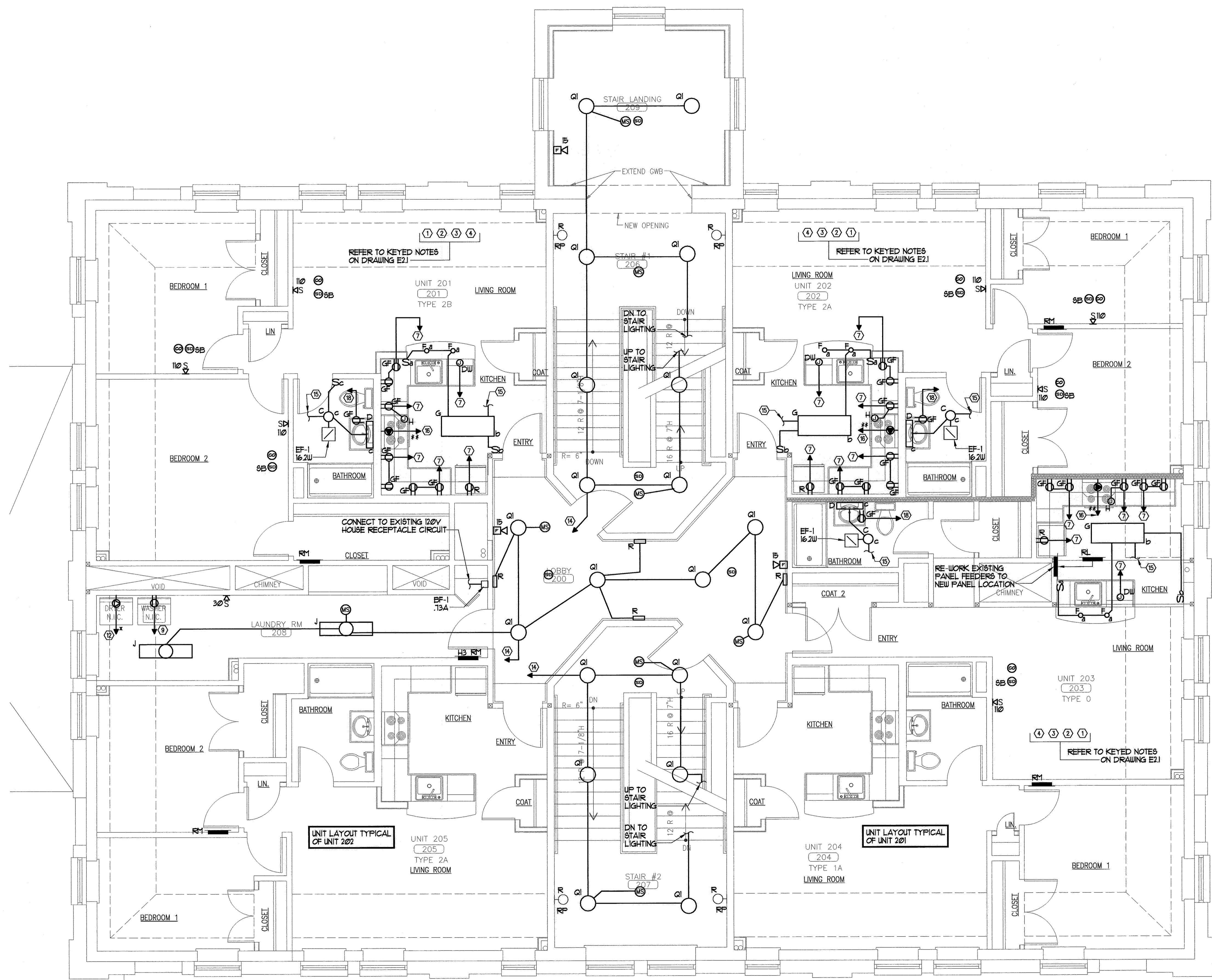
Date: August 28, 2009

Revisions:

- △
- △
- △
- △
- △

Drawing Number:

**SHAILER
E1.5**



NOTES
 1. REFER TO ARCHITECTURAL REFLECTED CEILING PLAN FOR LOCATIONS OF ALL FIXTURES.
 2. REFER TO DRAWING E21 FOR UNIT AND COMMON SPACE KEYED NOTES.

UNIT FIRE ALARM SEQUENCE NOTES
 1. ON BUILDING SYSTEM ACTIVATION ALL AUDIO/VISUAL AND VISUAL ONLY DEVICES SHALL ALARM.
 2. WHEN UNIT SMOKE DETECTOR GOES INTO ALARM ALL AUDIO/VISUAL AND VISUAL ONLY DEVICES WITHIN THAT UNIT WILL ACTIVATE. THIS WILL NOT TRIP THE ENTIRE BUILDING SYSTEM. IT WILL ANNUNCIATE AT THE FACP.