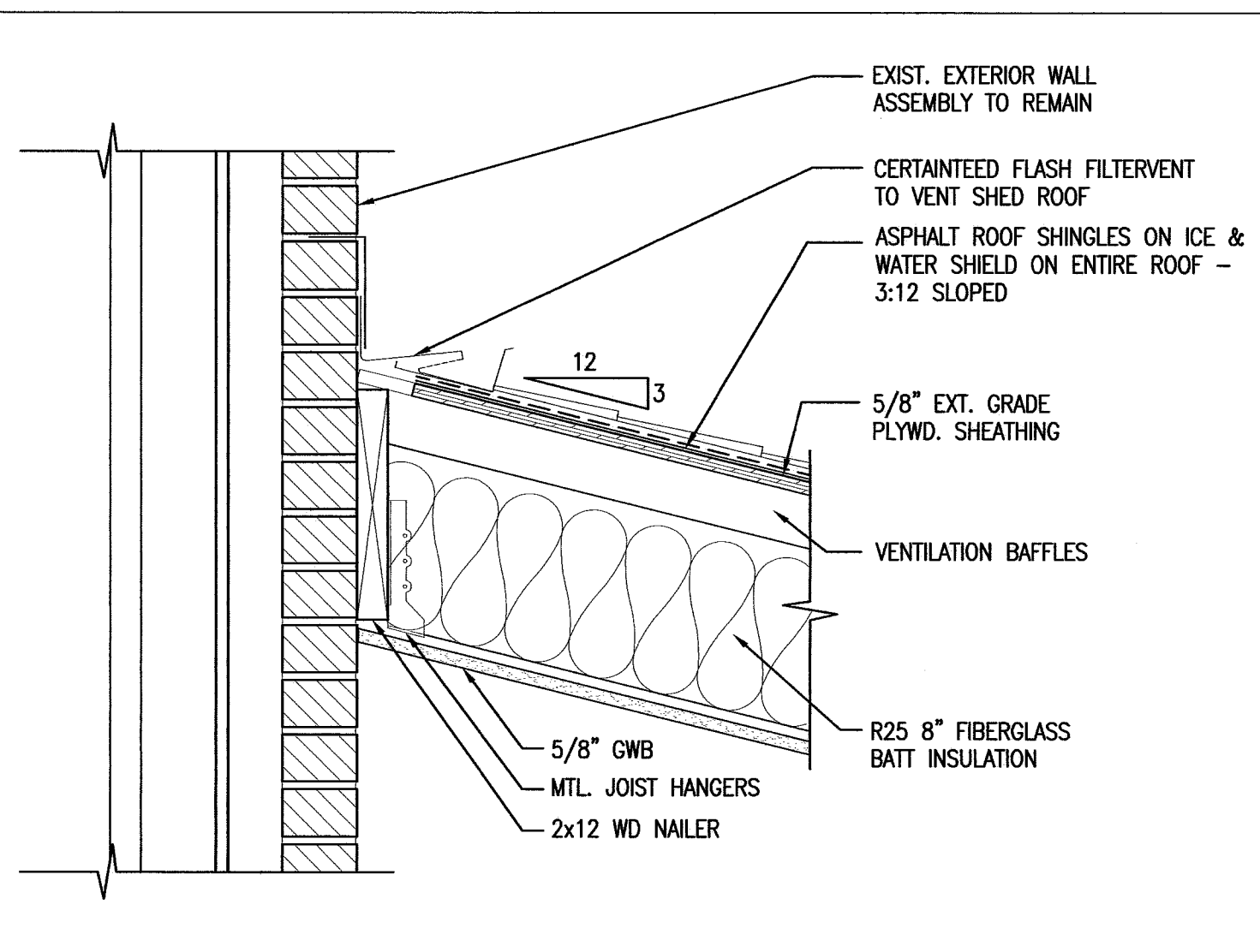


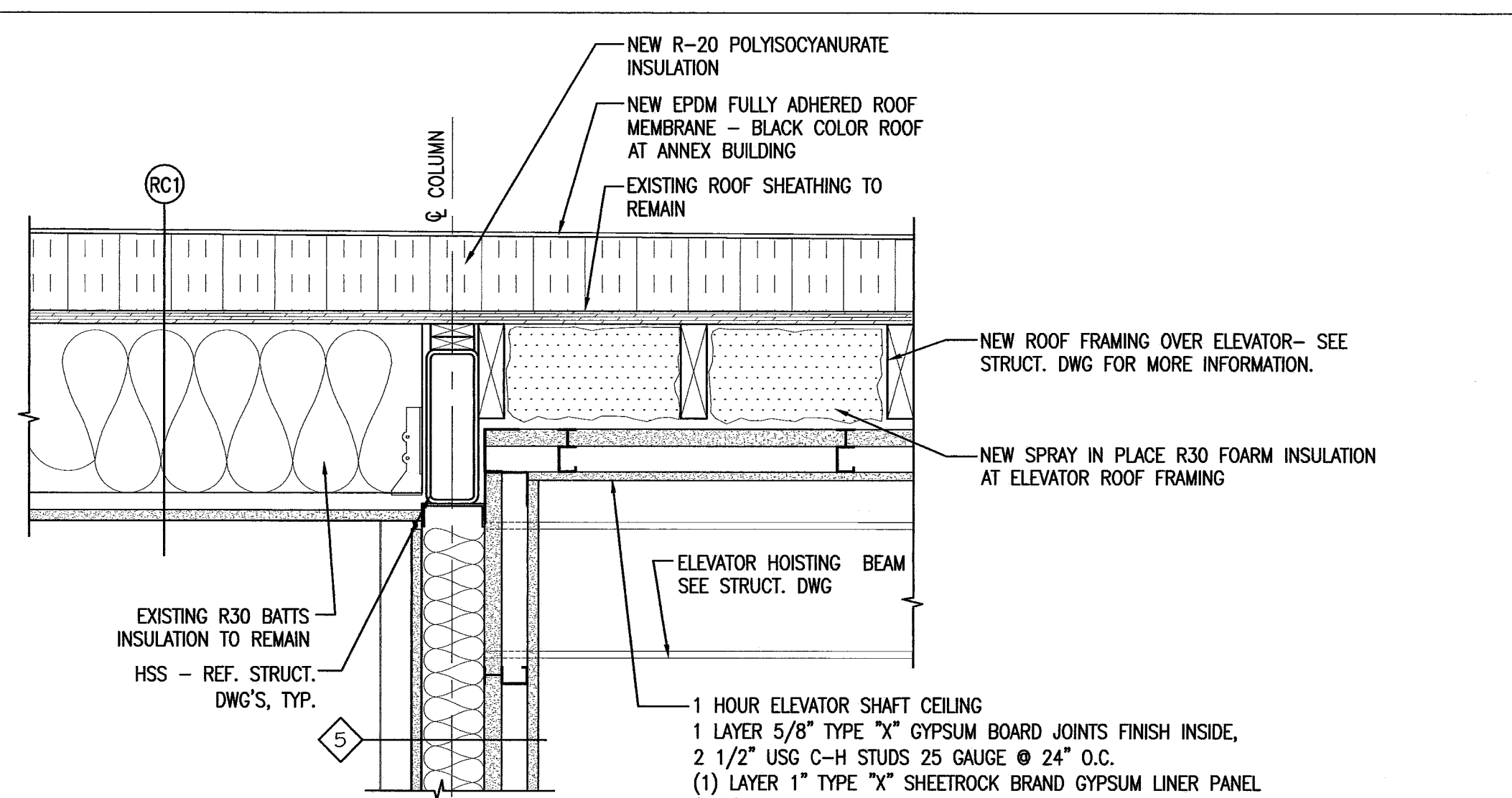
1 TRASH ROOM EAVE DETAIL @ 3:12 ROOF

REFERENCED FROM: SCALE: 1/2" = 1'-0"



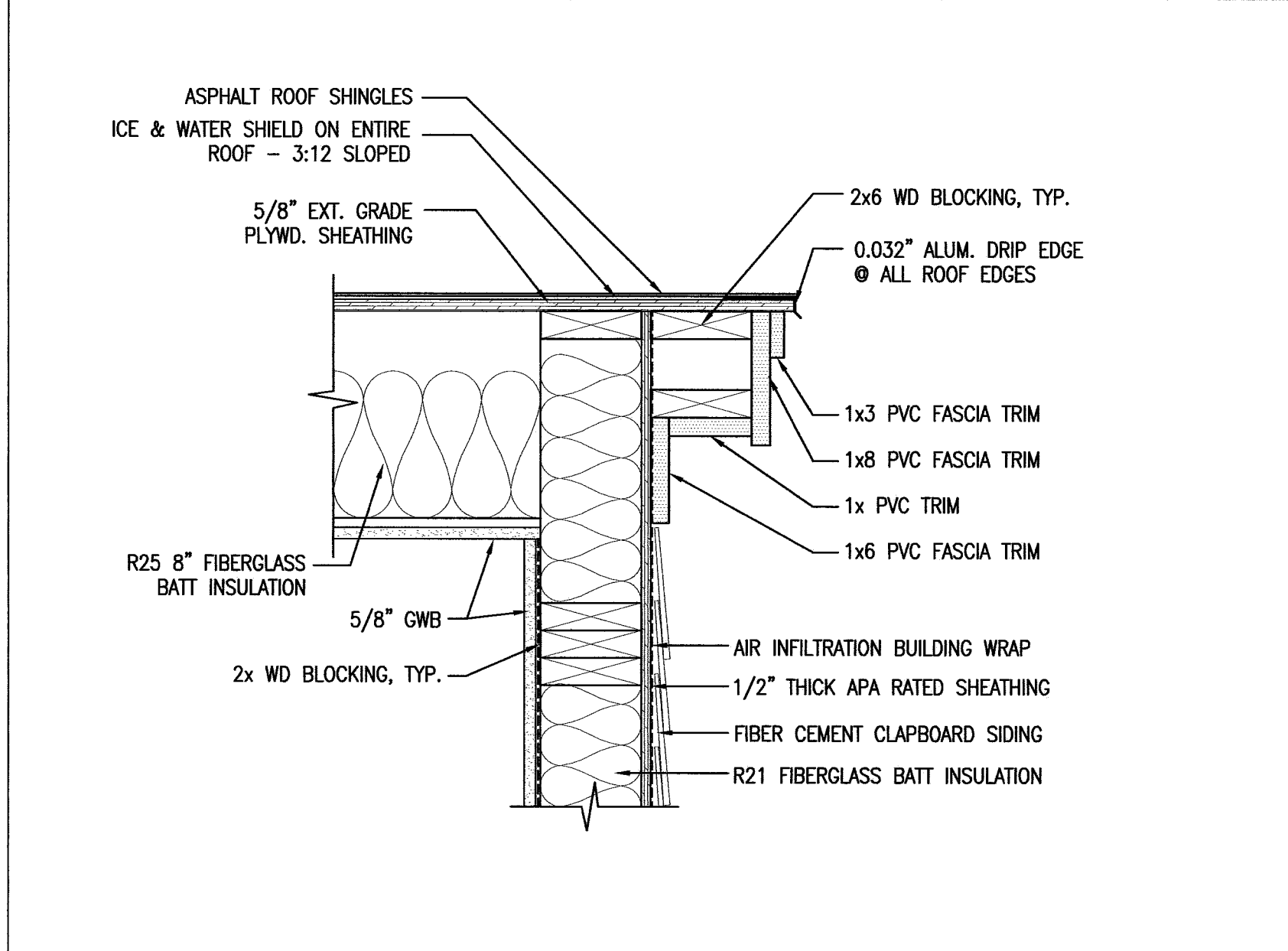
4 DETAIL @ TRASH RM. ROOF/EXIST. EXT. WALL

REFERENCED FROM: SCALE: 1/2" = 1'-0"



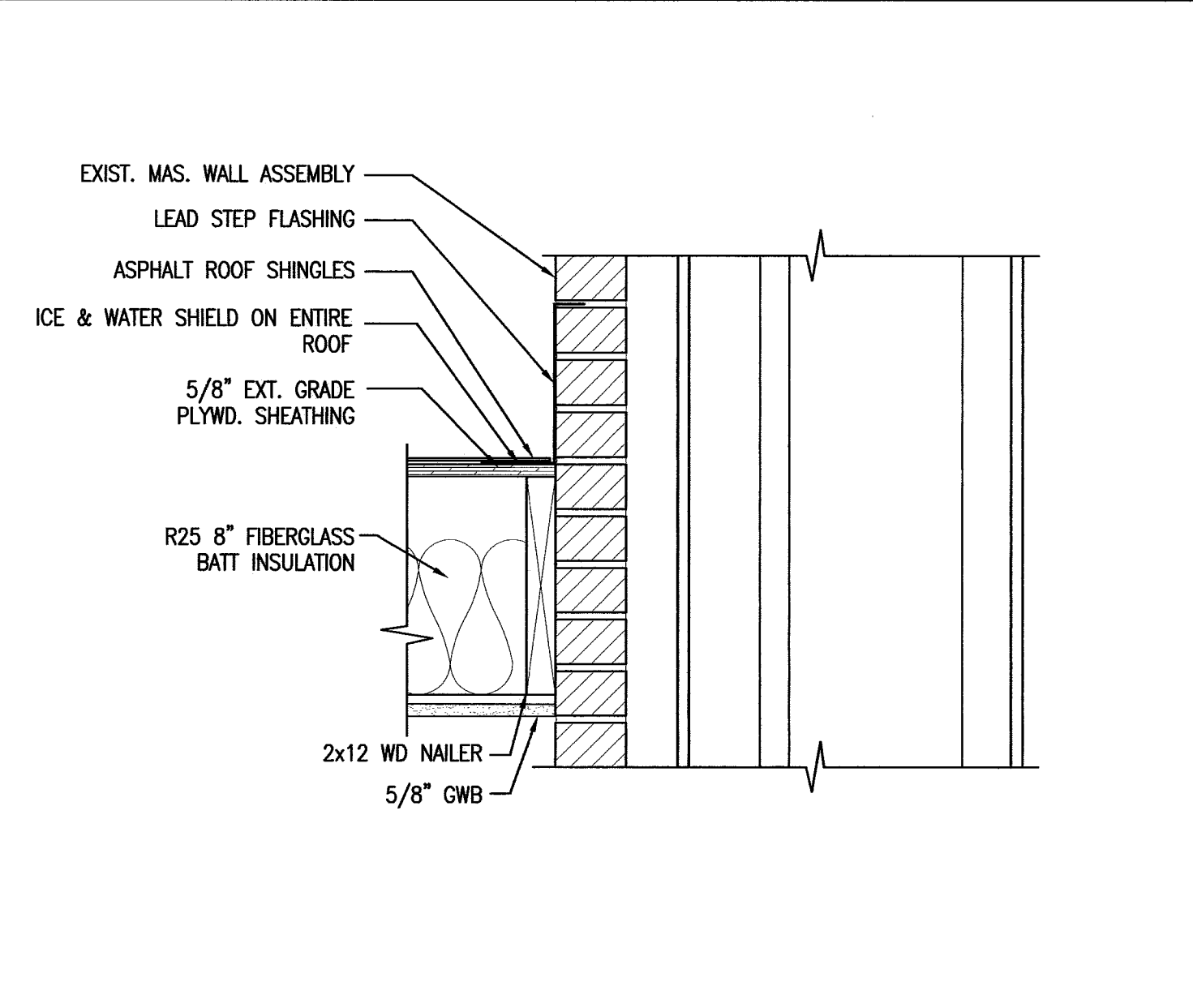
7 DETAIL @ ELEVATOR SHAFT - ROOF DETAIL

REFERENCED FROM: SCALE: 1/2" = 1'-0"



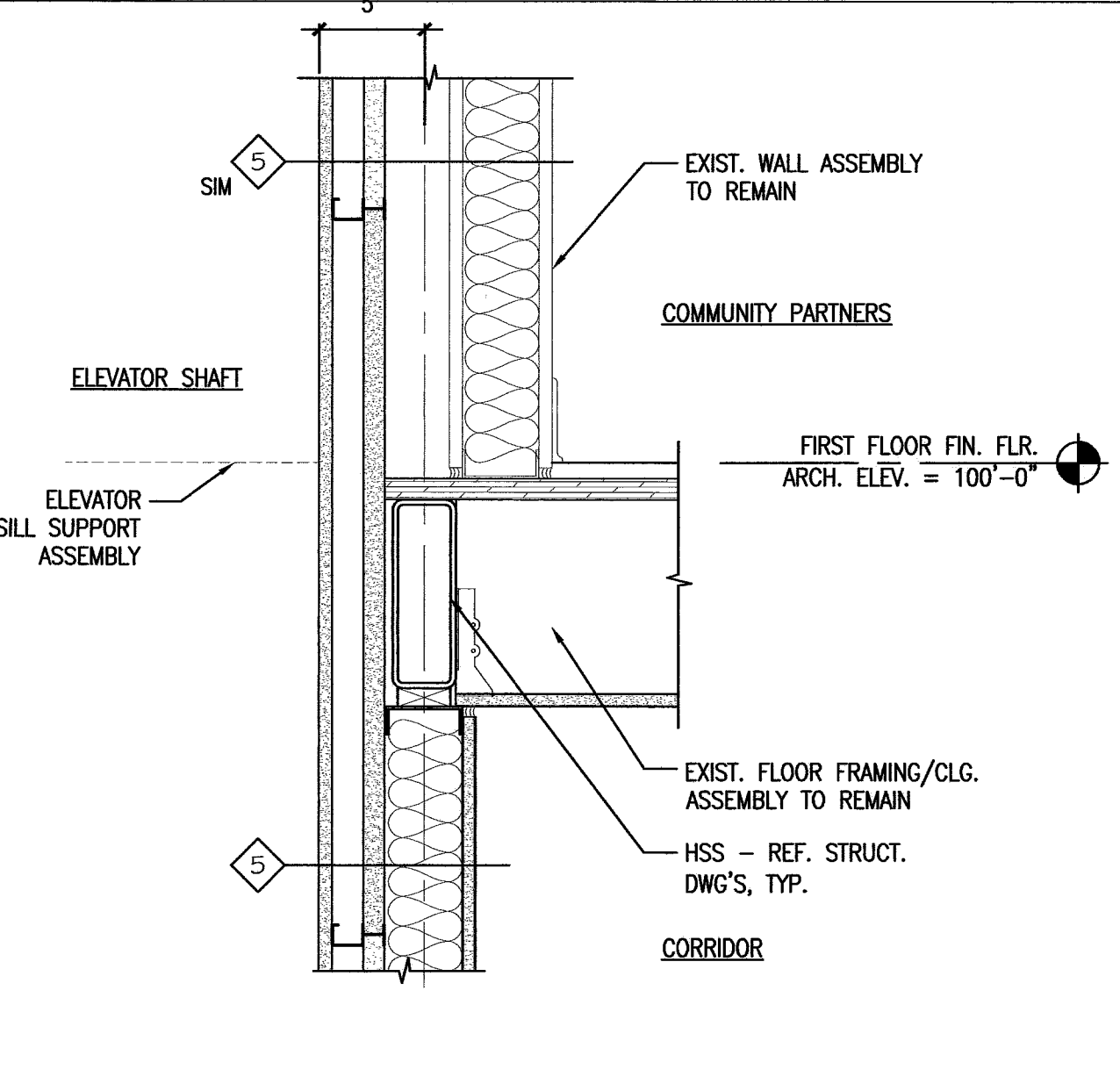
2 DETAIL @ TRASH RM. ROOF EDGE

REFERENCED FROM: SCALE: 1/2" = 1'-0"



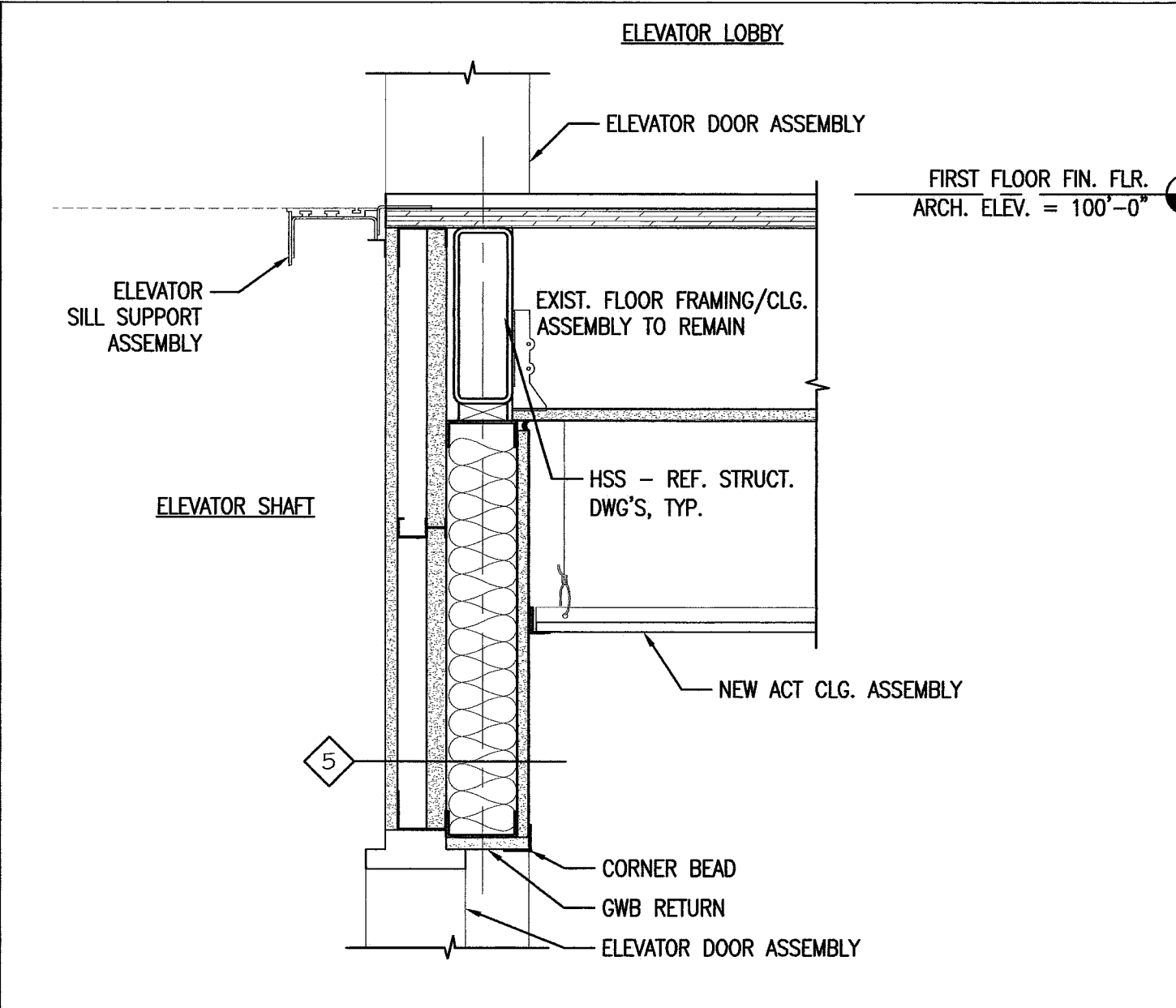
5 TRASH ROOM STEP FLASHING DETAIL

REFERENCED FROM: SCALE: 1/2" = 1'-0"



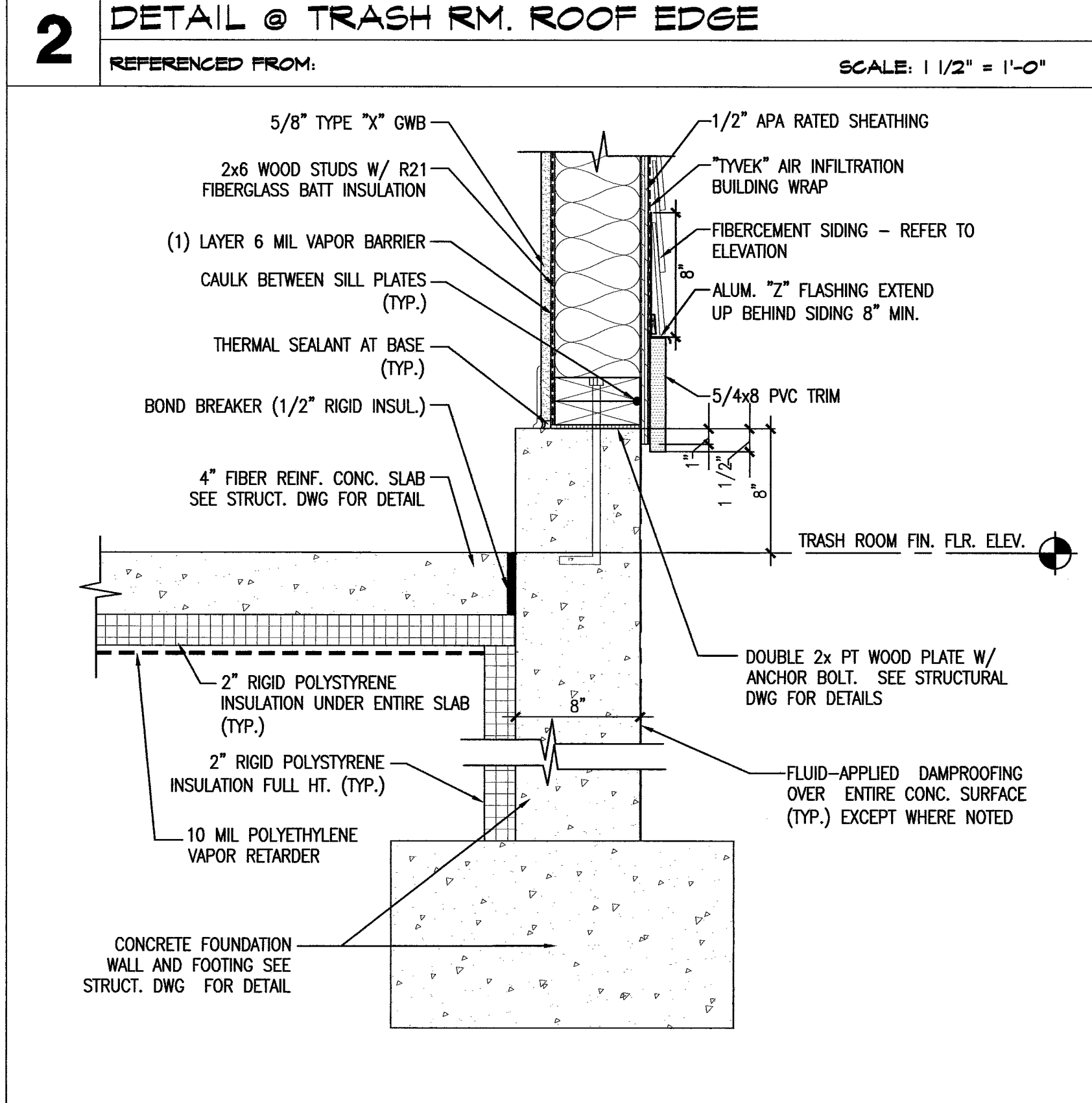
8 DETAIL @ ELEVATOR SHAFT - 1ST FLR.

REFERENCED FROM: SCALE: 1/2" = 1'-0"



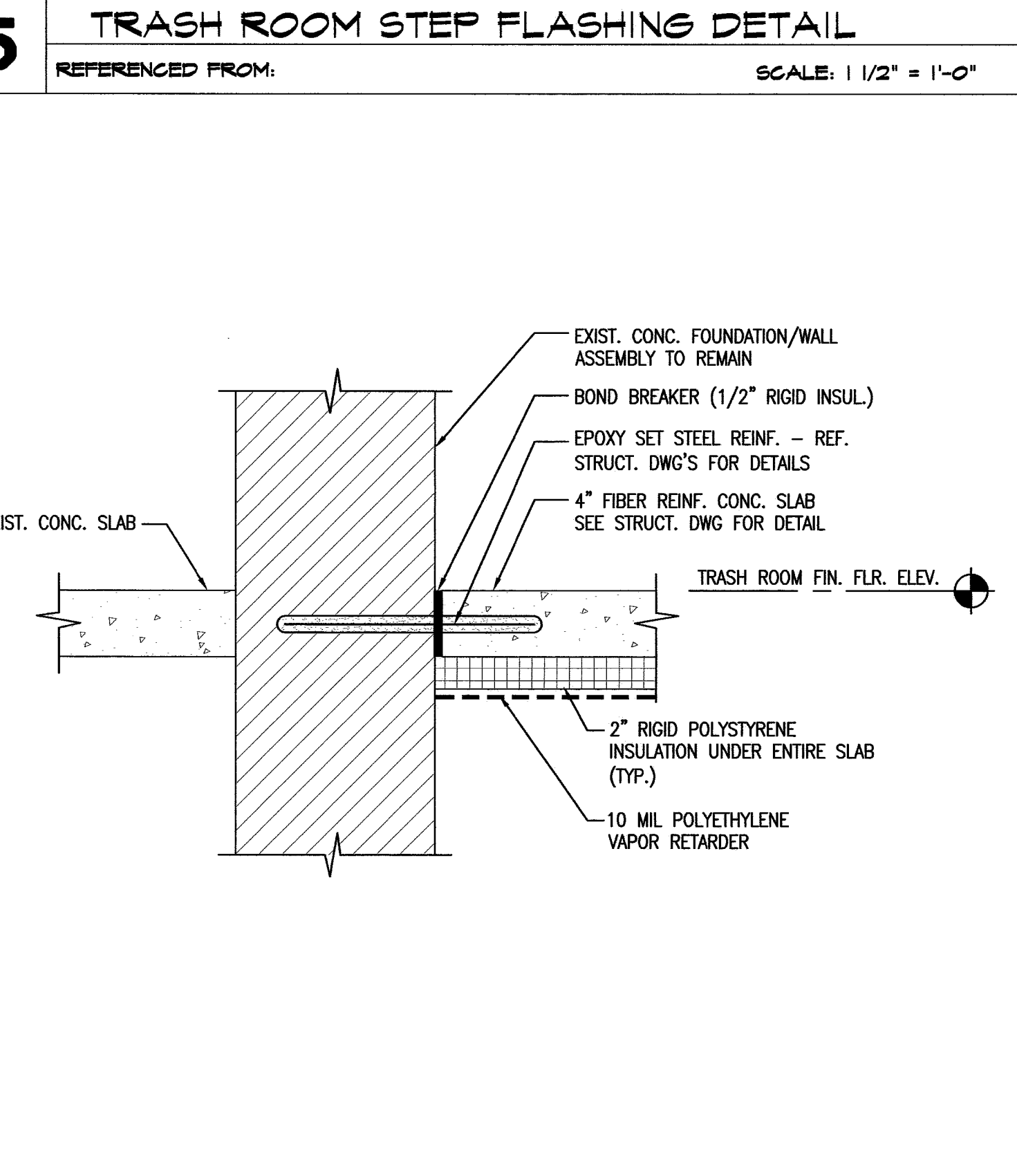
11 DETAIL @ ELEVATOR SHAFT - 1ST FLR.

REFERENCED FROM: SCALE: 1/2" = 1'-0"



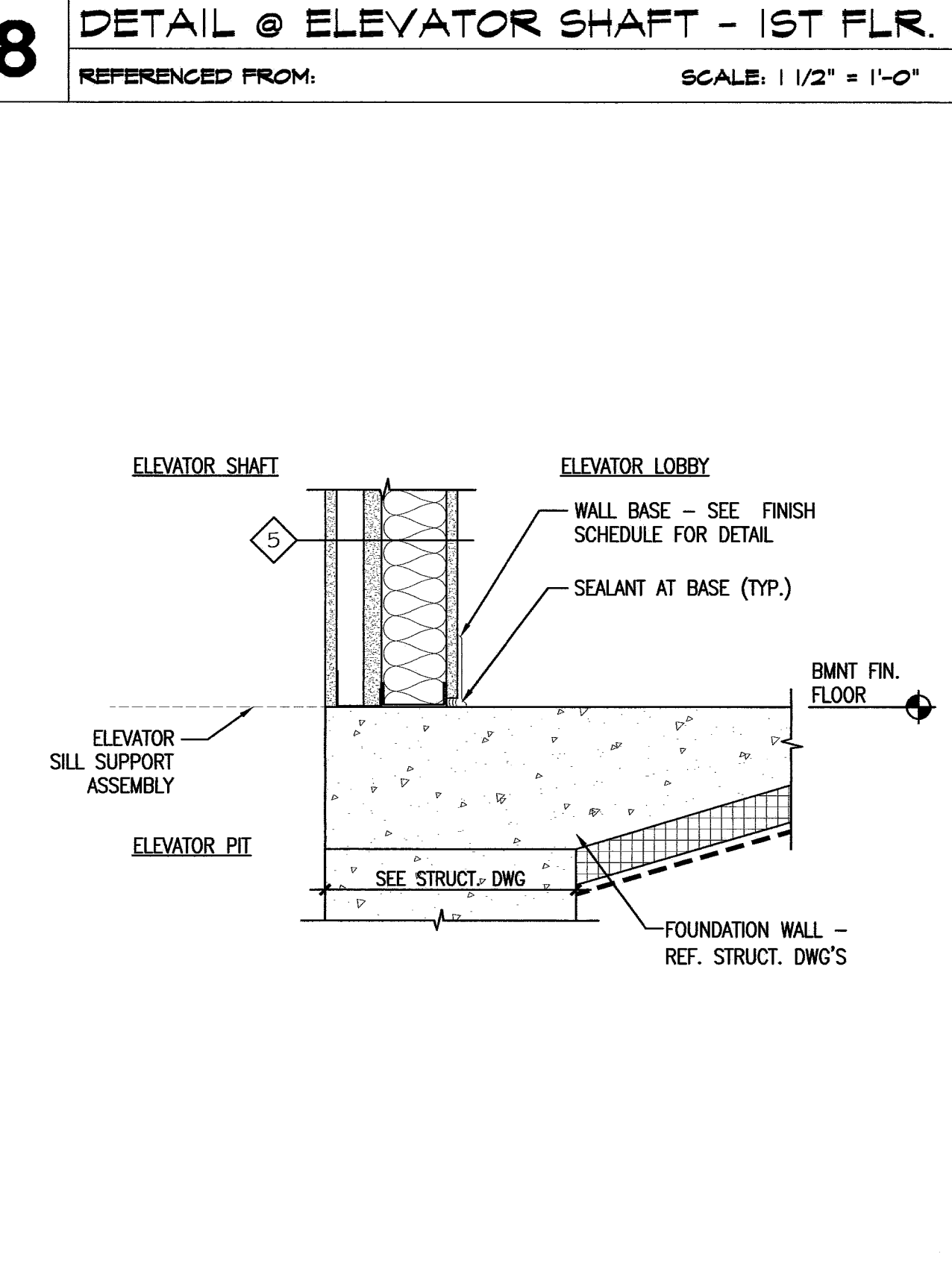
3 DETAIL @ TRASH ROOM EXT. BEARING WALL

REFERENCED FROM: SCALE: 1/2" = 1'-0"



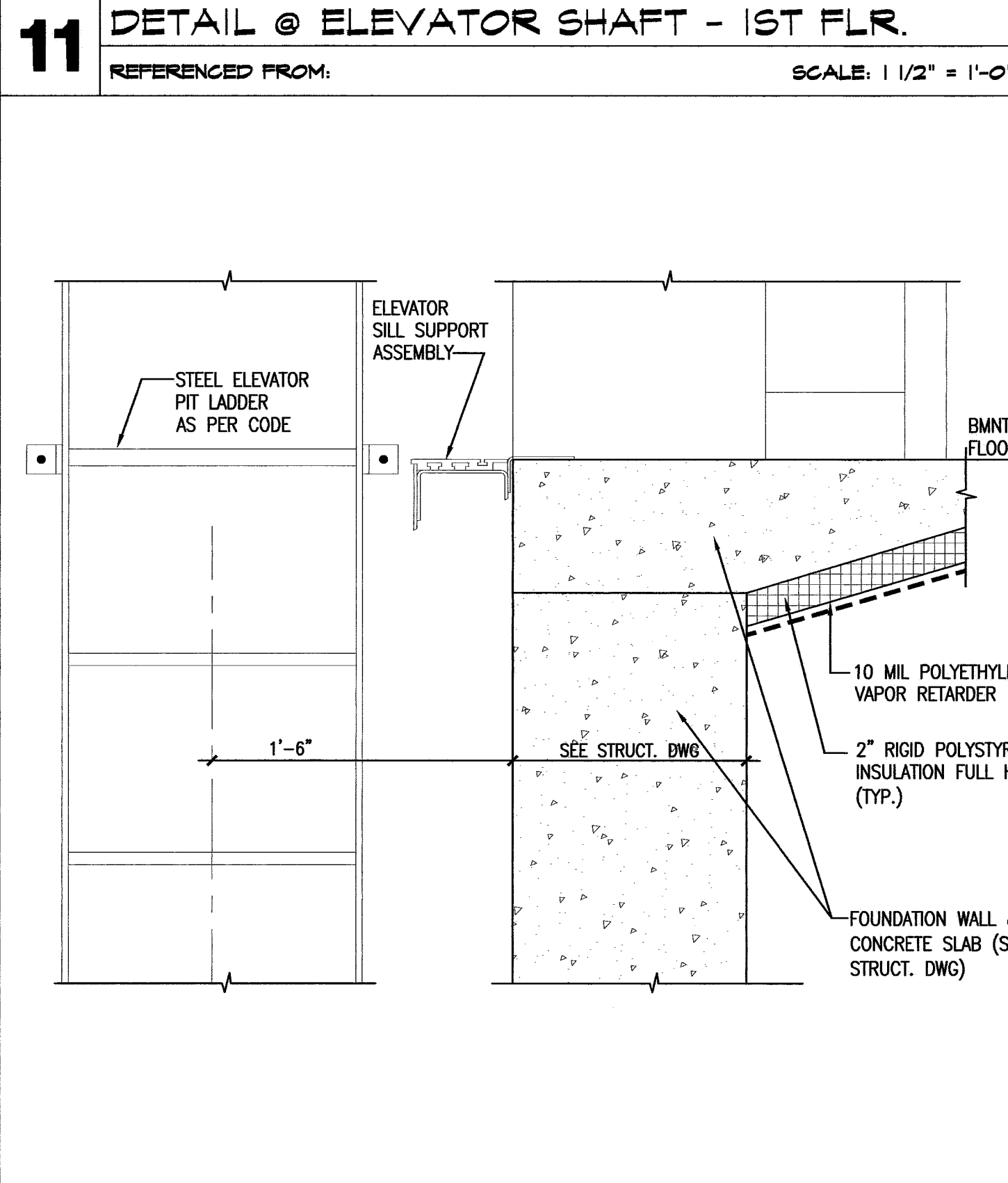
6 DETAIL @ TRASH RM. CONC. SLAB/EXIST. WALL

REFERENCED FROM: SCALE: 1/2" = 1'-0"



9 DETAIL @ ELEVATOR SHAFT - BSMNT

REFERENCED FROM: SCALE: 1/2" = 1'-0"



12 DETAIL @ ELEVATOR SHAFT PIT LADDER

REFERENCED FROM: SCALE: 1/2" = 1'-0"

CWS Architects
 Architecture
 Space Planning
 Value Design
 434 Cumberland Avenue
 Portland, ME 04101
 Phone: (207) 774-4441
 Fax: (207) 774-4016
 www.CWSarch.com

REGISTERED ARCHITECT
 BENEDICT B. WALTER
 NO. 1947
 STATE OF MAINE

Owner:
Avesta Munjoy Commons, LP.
 307 Cumberland Ave.
 Portland, Maine 04101
 TEL: 207-553-7780

Client:
Munjoy Commons Apartments
 Portland, Maine

Project No: 07429
 Drawing Title:
SHALER DETAILS

Scale: AS NOTED
 Date: August 28, 2009
 Revisions:

Drawing Number:
SHALER A7.2