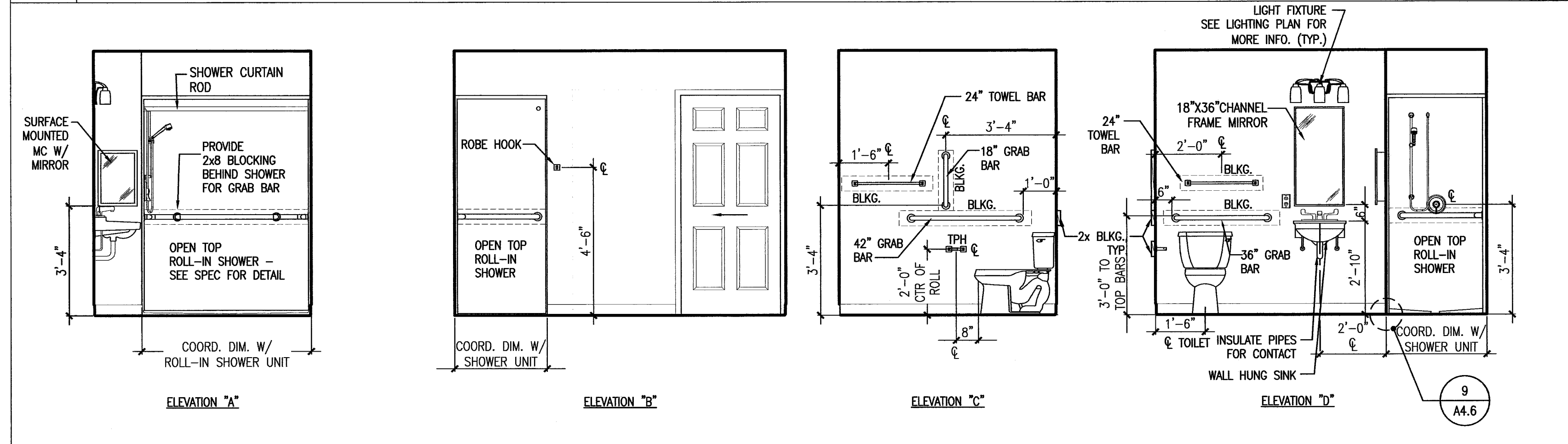
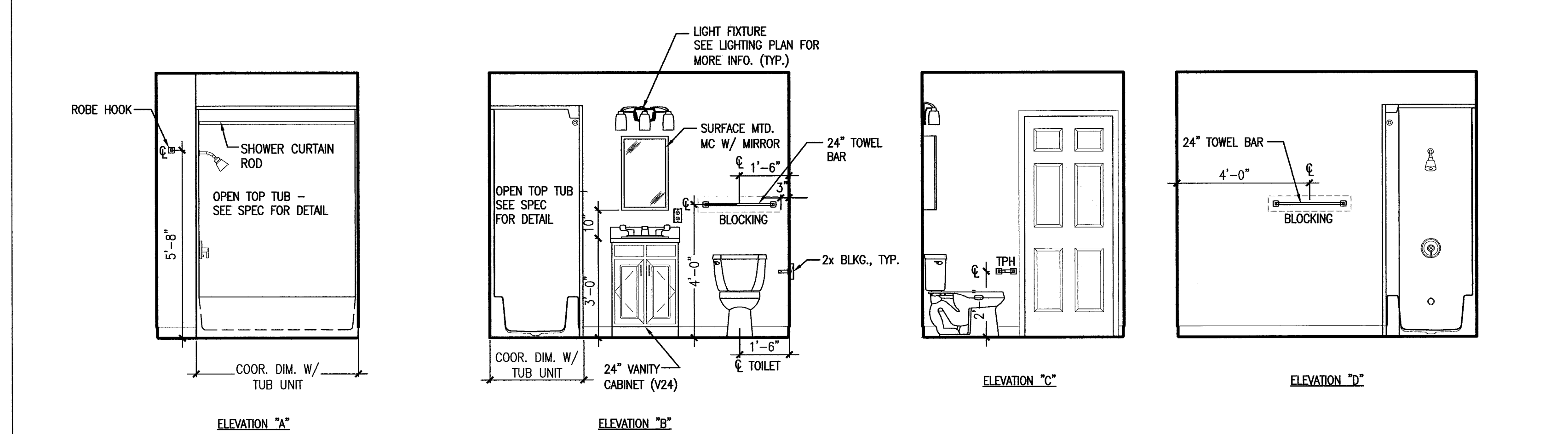


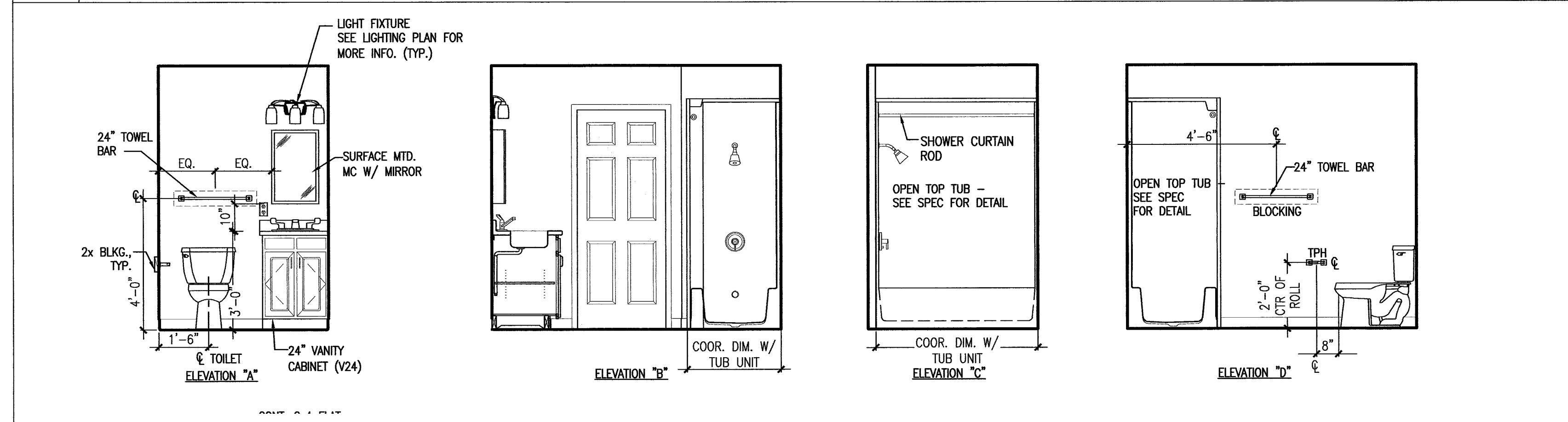
**2 BATHROOM ELEVATIONS - IBC TYPE "A" UNIT (FIRST FLOOR AT SHALER)**  
 REFERENCED FROM: SCALE: 3/8" = 1'-0"



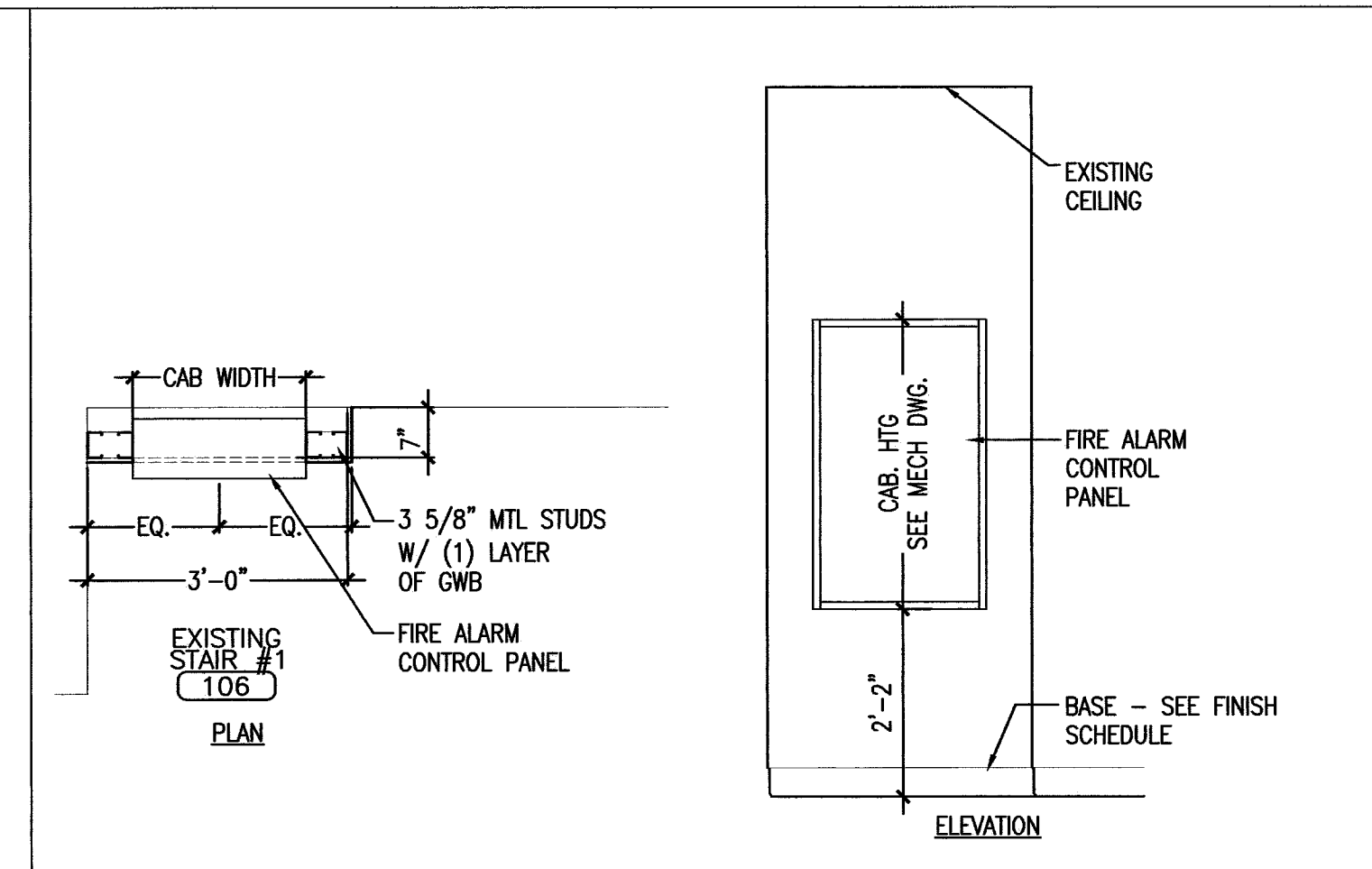
**3 BATHROOM ELEVATIONS - IBC TYPE "A" UNIT (FIRST FLOOR AT SHALER)**  
 REFERENCED FROM: SCALE: 3/8" = 1'-0"



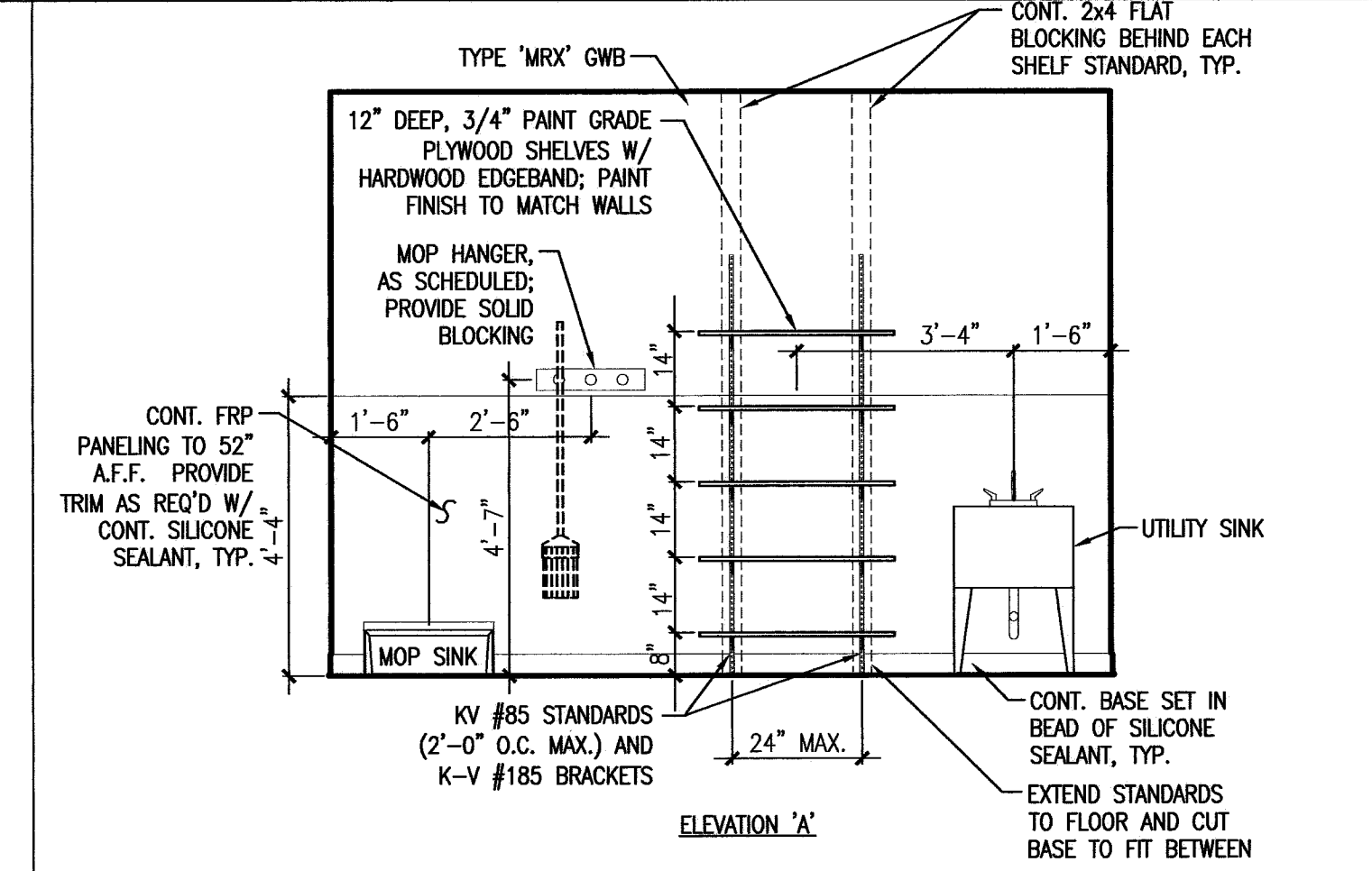
**4 TYPICAL BATHROOM ELEVATIONS - SECOND FLOOR**  
 REFERENCED FROM: SCALE: 3/8" = 1'-0"



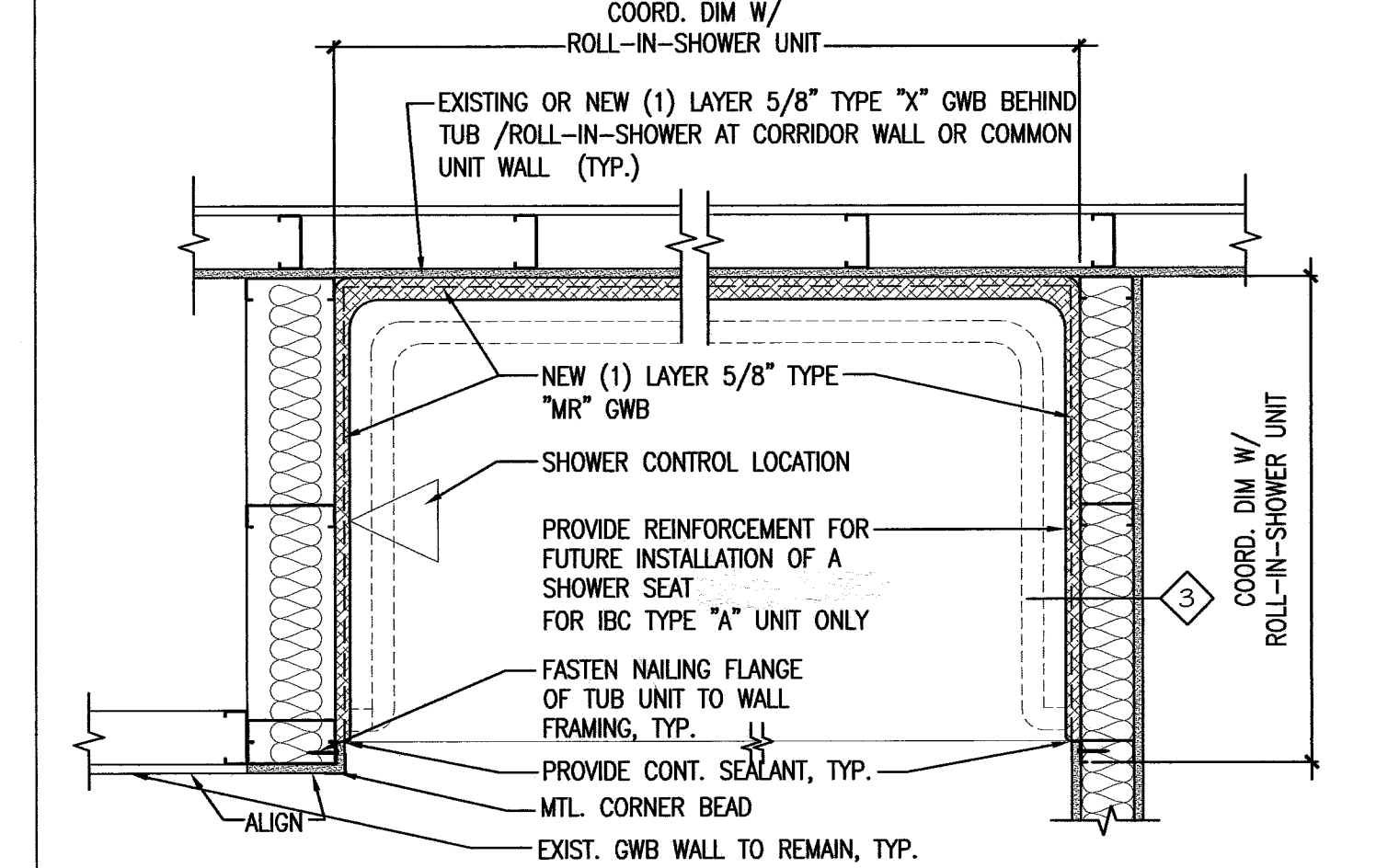
**5 TYPICAL BATHROOM ELEVATIONS - THIRD FLOOR**  
 REFERENCED FROM: SCALE: 3/8" = 1'-0"



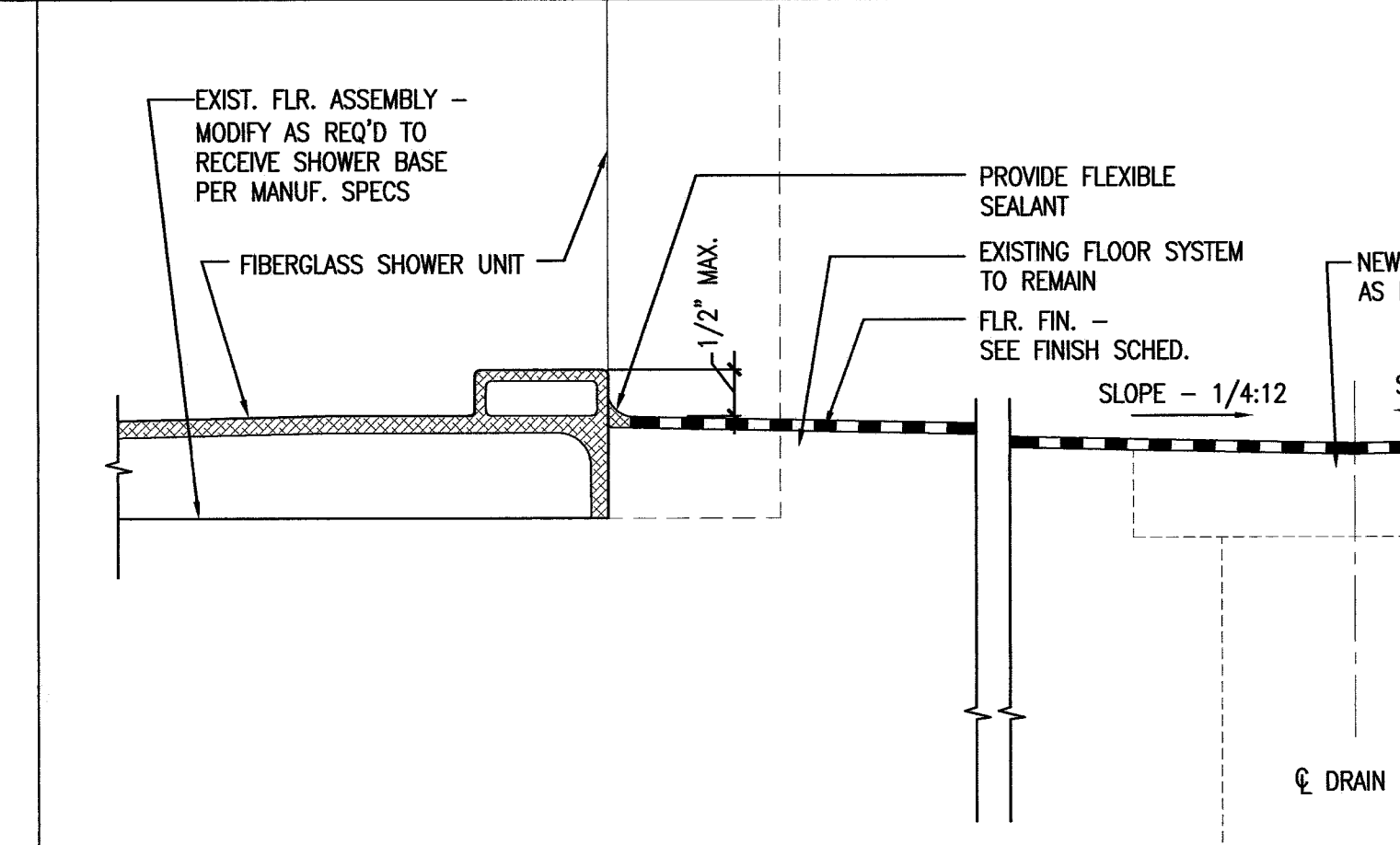
**6 FIRE ALARM PANEL**  
 REFERENCED FROM: SCALE: 1/2" = 1'-0"



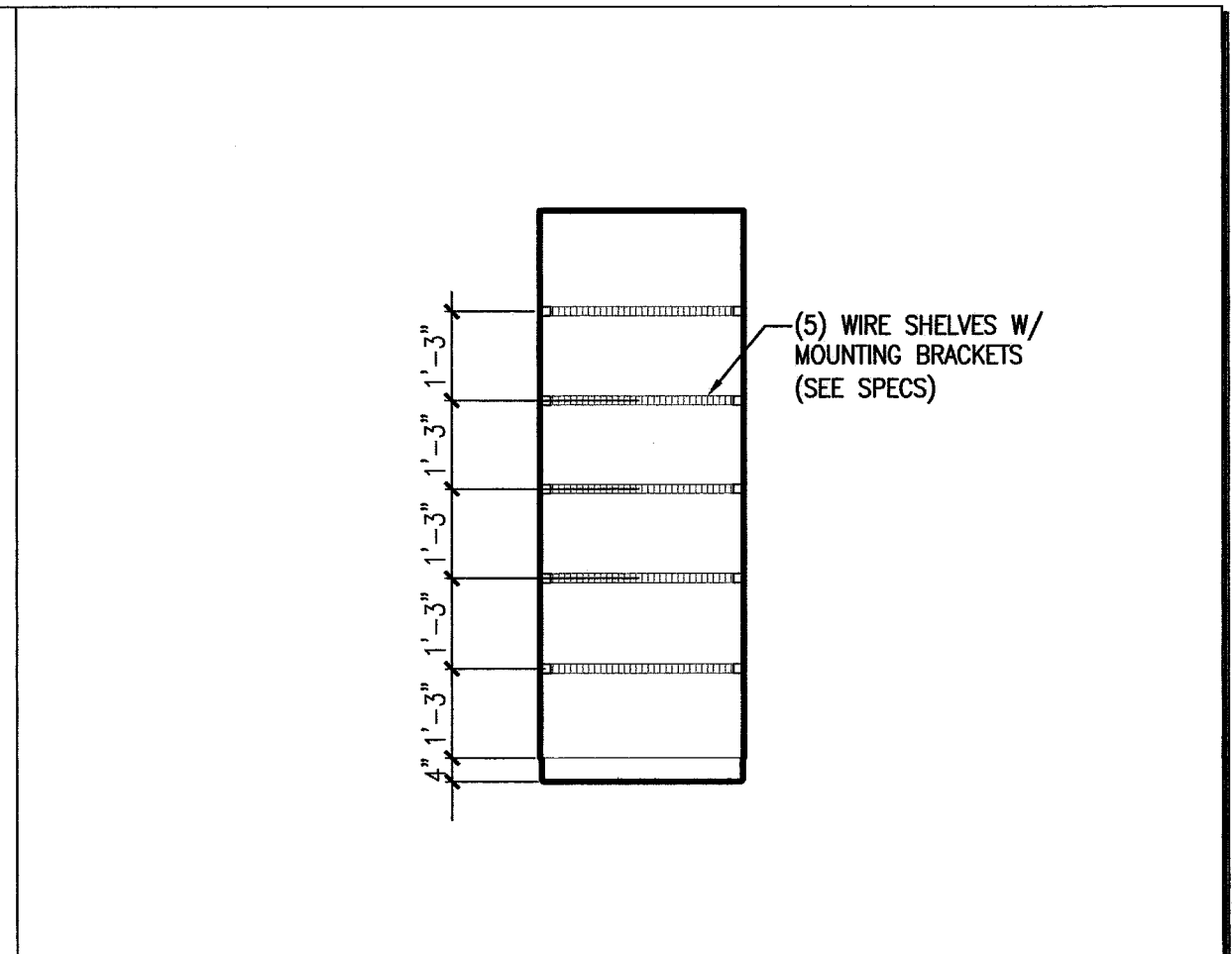
**7 MAINTENANCE/STORAGE**  
 REFERENCED FROM: SCALE: 3/8" = 1'-0"



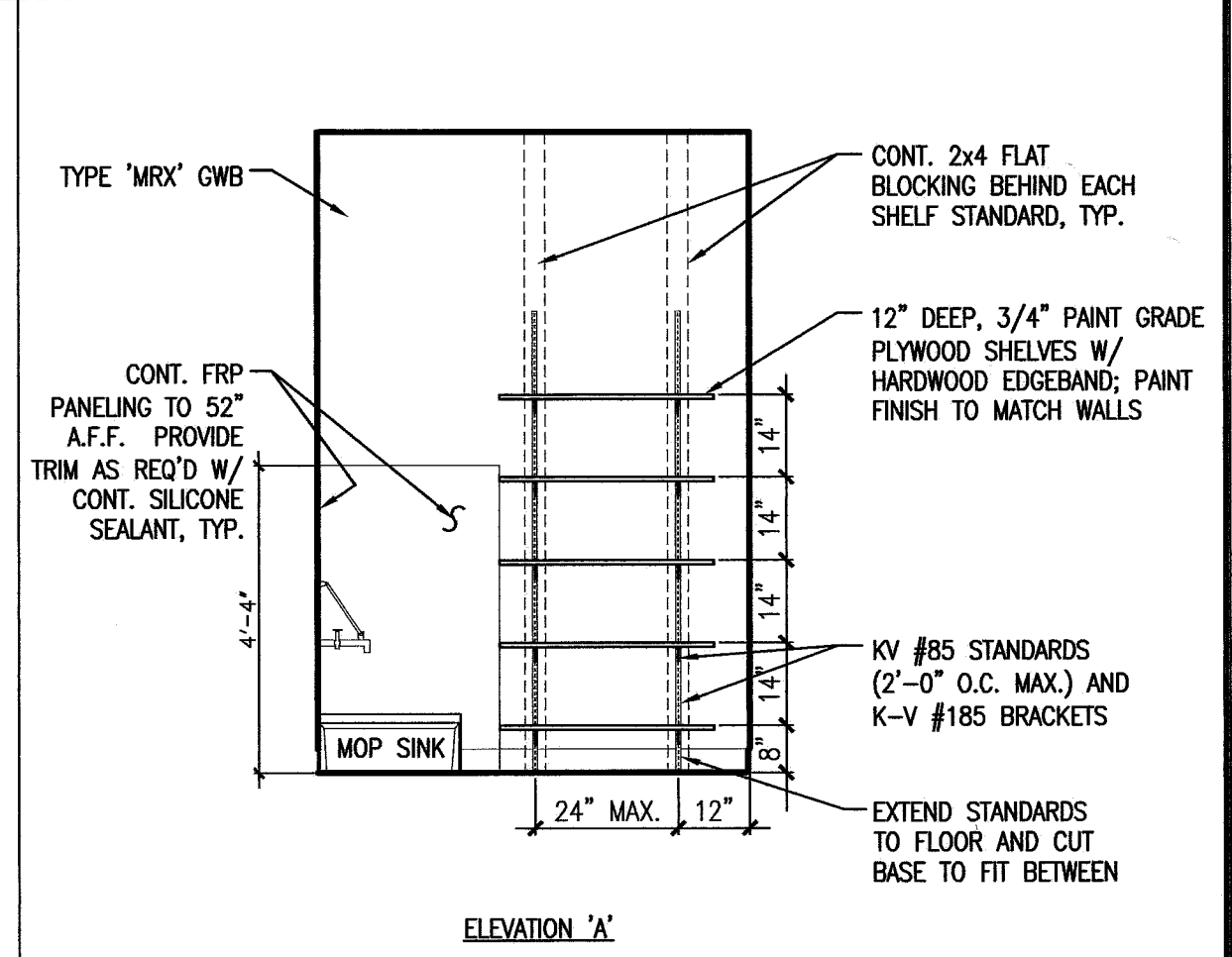
**8 ENLARGED PLAN @ TYP. ROLL-IN SHOWER**  
 REFERENCED FROM: SCALE: 3/8" = 1'-0"



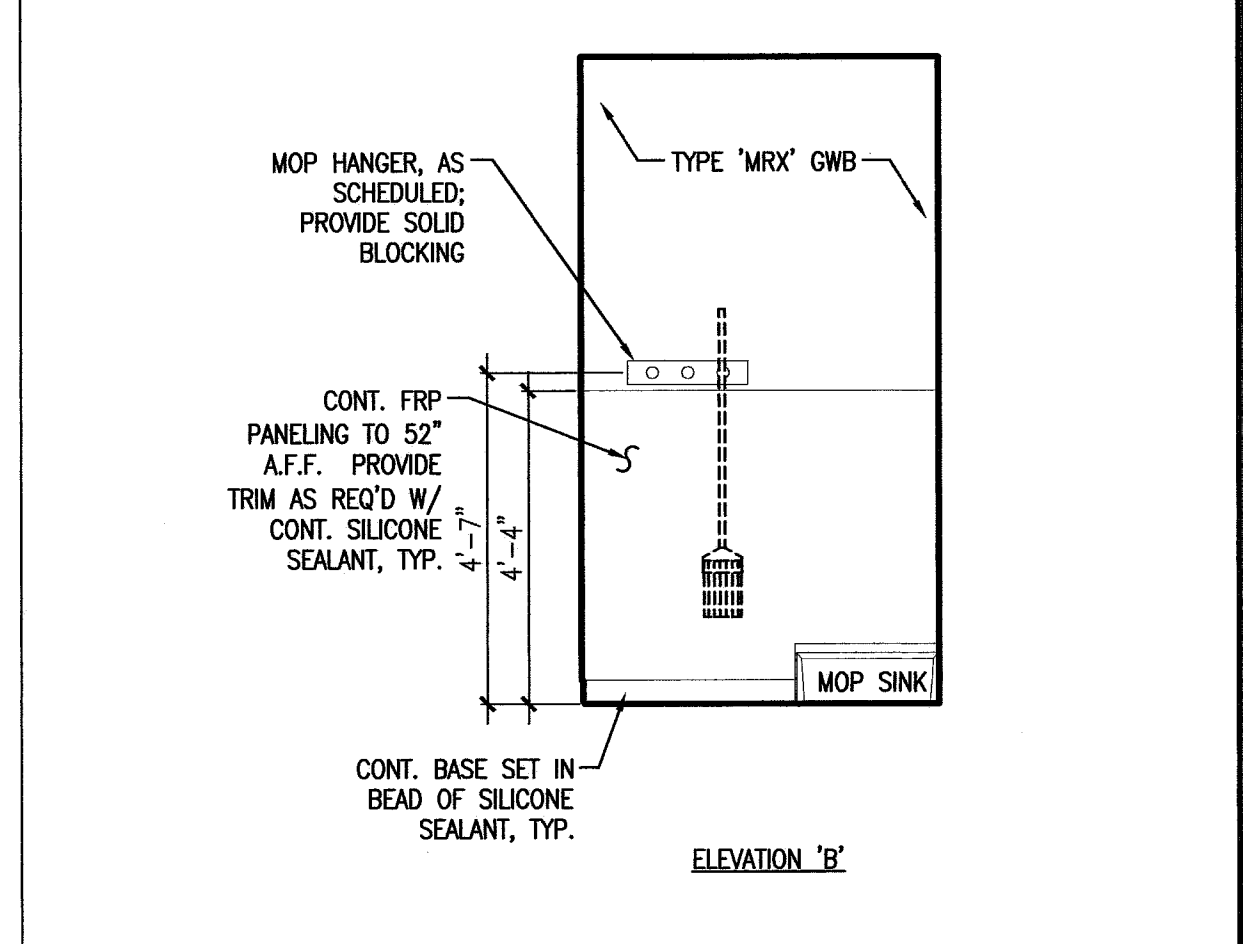
**9 TYP. SHOWER UNIT CURB DETAIL**  
 REFERENCED FROM: SCALE: 6" = 1'-0"



**10 TYP. SHELVES MOUNTING HT.**  
 REFERENCED FROM: SCALE: 3/8" = 1'-0"



**11 JANITOR CLOSET ELEVATION**  
 REFERENCED FROM: SCALE: 3/8" = 1'-0"



**12 JANITOR CLOSET ELEVATION**  
 REFERENCED FROM: SCALE: 3/8" = 1'-0"

**CWS Architects**  
 Architecture  
 Space Planning  
 Value Design  
 434 Cumberland Avenue  
 Portland, ME 04101  
 Phone: (207)774-4441  
 Fax: (207)774-4016  
 www.CWSarch.com

**REGISTERED ARCHITECT**  
 BENEDICT WALTER  
 NO. 1947  
 STATE OF MAINE  
 Owner:  
**Avesta Munjoy Commons, LP.**  
 307 Cumberland Ave.  
 Portland, Maine 04101  
 TEL. 207-553-7780  
 Client:

**Munjoy Commons Apartments**  
 Portland, Maine  
 Project No: 07429  
 Drawing Title:  
**SHALER INT. ELEV'S, ENL. PLAN & DETAIL**

Scale: AS NOTED  
 Date: August 28, 2009  
 Revisions:  
 Drawing Number:  
**SHALER A4.6**