

PRETENSION RODS SIMULTANEOUSLY TO #11,000 EACH ROD

TRUSS "A" REINFORCEMENT

1/4"=1'-0"

NOTES:

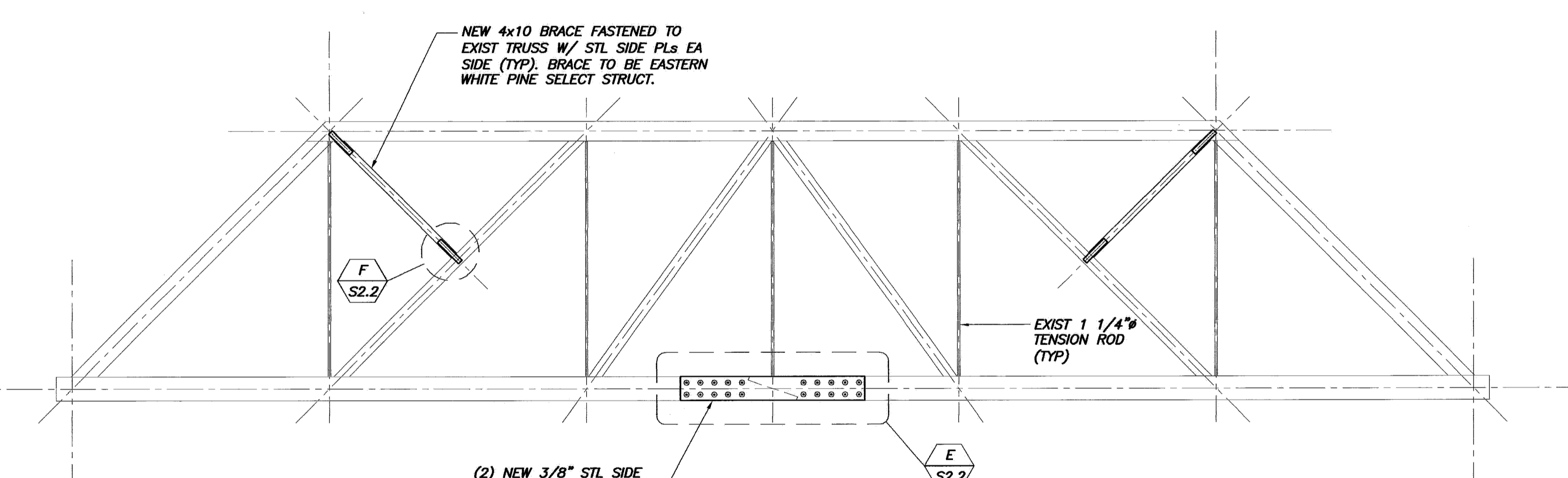
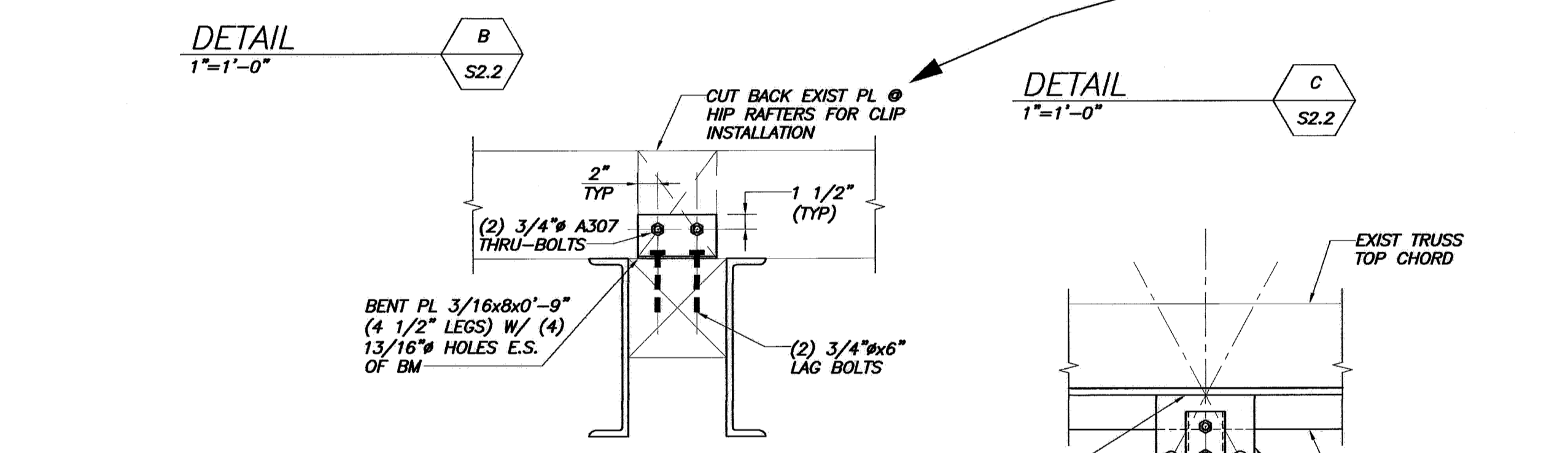
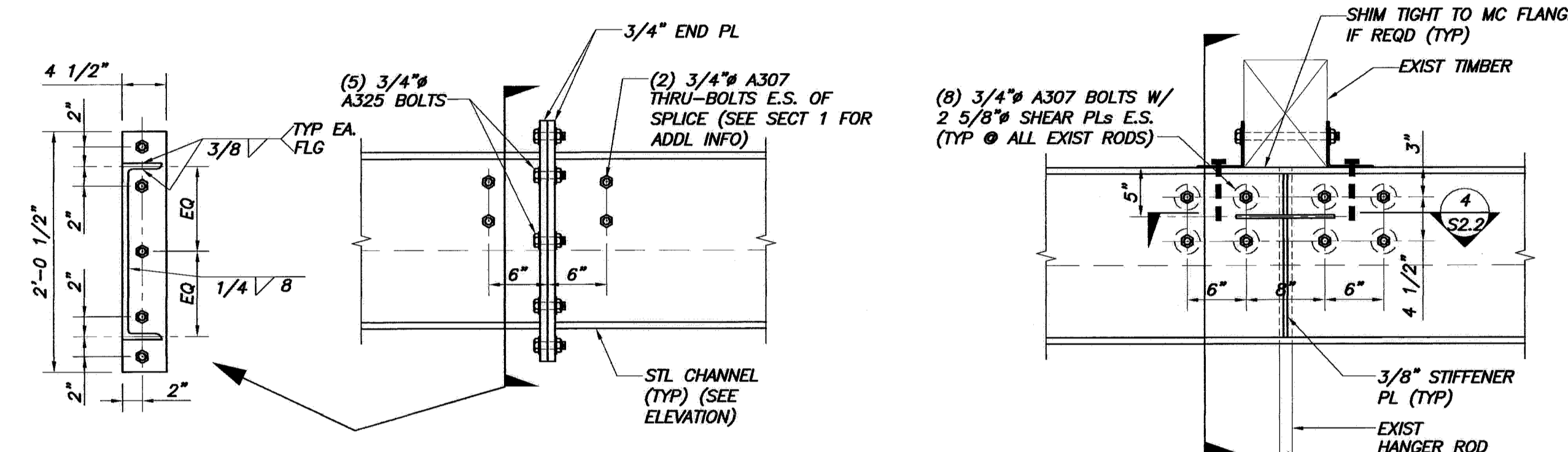
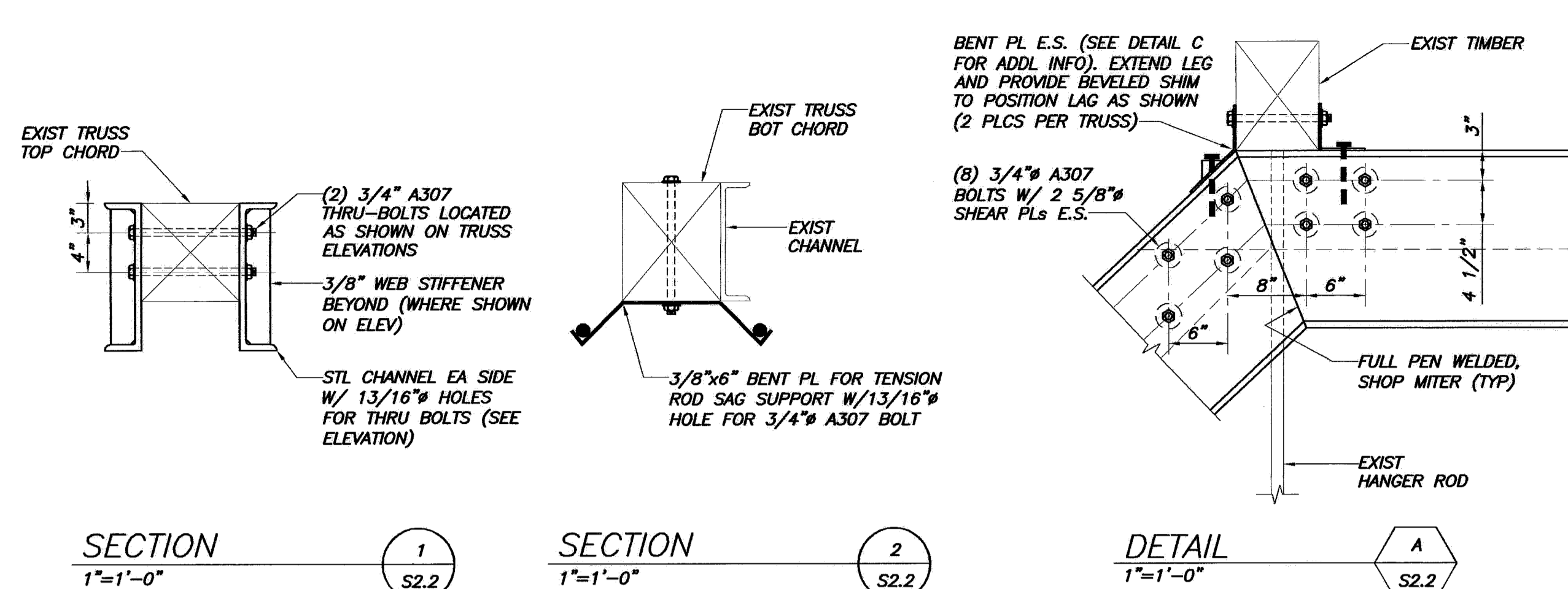
1. ALL STEEL THIS TRUSS TO BE SHOP PRIMED
2. VERIFY ALIGNMENT, BEARING AND ALL FIELD CONDITIONS + NOTIFY ARCH/ENGINEER PRIOR TO FABRICATION
3. TRUSS REINFORCEMENT TYP (2) TRUSSES
4. SHEAR PLATES AVAILABLE FROM CLEVELAND CONNECTORS 1-800-251-8351 - USE MATCHING GROOVING TOOL. EQUIVALENT PRODUCT MAY BE USED ONLY W/ ENGINEER'S APPROVAL

TRUSS "A" SEQUENCE OF WORK

1/4"=1'-0"

1. INSTALL TEMP SHORING MEMBERS MARKED (S).
2. REMOVE TOP STL PL @ MEMBERS MARKED (X). LEAVE MEMBERS IN PLACE.
3. INSTALL ALL TRUSS REINFORCEMENT, BRACING, TIE RODS AND ALL CONNECTIONS.
4. PRETENSION TIE RODS
5. REMOVE MEMBERS MARKED (X), (XR) AND (S). REMOVE WHILE PRETENSIONING JACK ASSEMBLY IS IN PLACE IN THE EVENT THAT ADDL MINOR JACKING IS REQD. ALL EXISTING RODS TO REMAIN. RE-USE (XR) MEMBERS AND CONN PLs @ TRUSS "B" REINFORCEMENT.
6. DOUBLE NUT AND CUT OFF EXTRA LENGTH OF TIE ROD.

ALL SHOP MITERS SHALL BE COMPLETE-JOINT-PENETRATION WELDS + SHALL BE SCANNED USING RADIOGRAPHIC OR ULTRASONIC INSPECTION. SUBMIT PASSING TEST RESULTS PRIOR TO SHIPPING ASSEMBLY



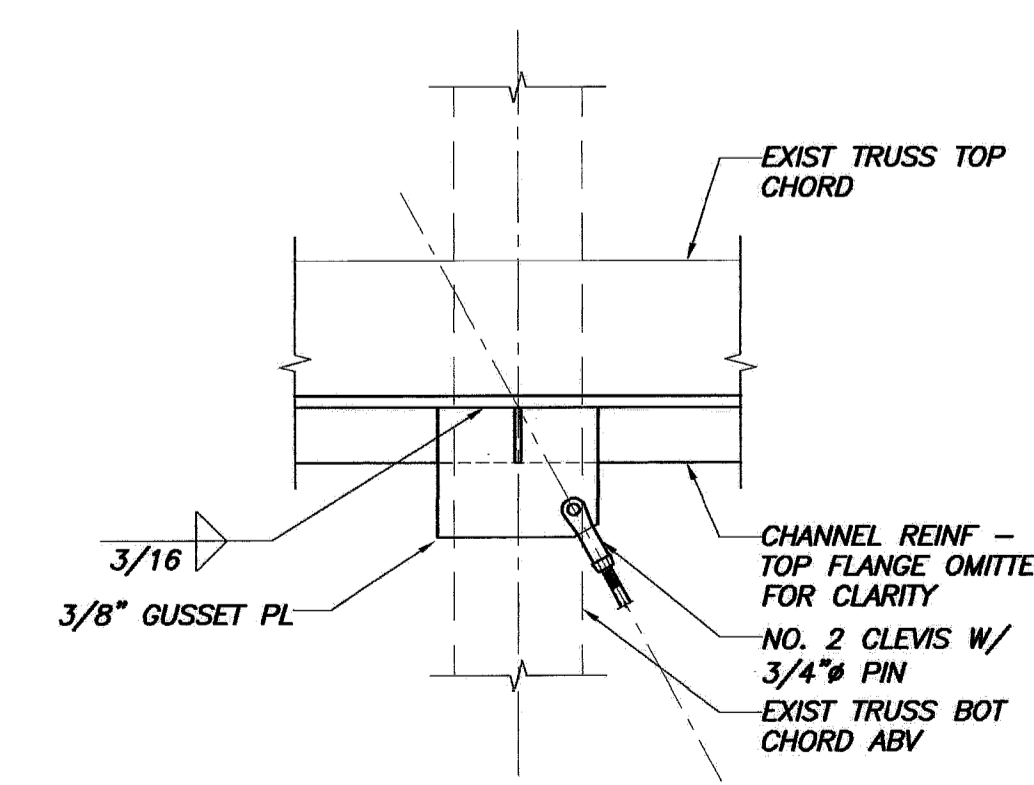
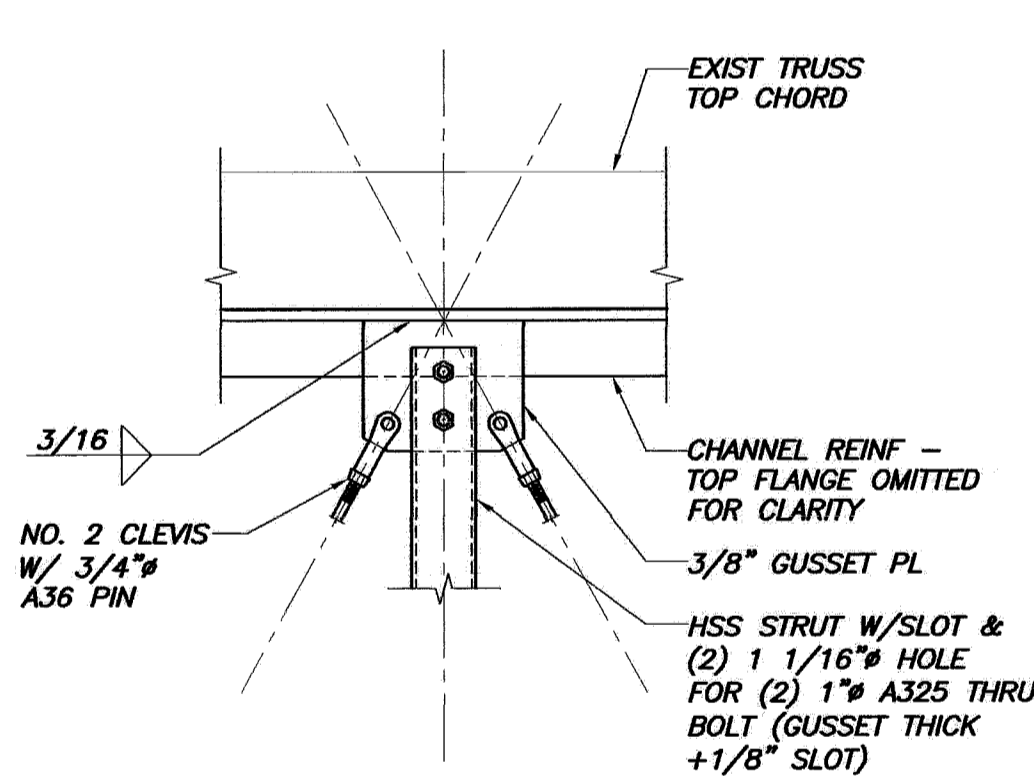
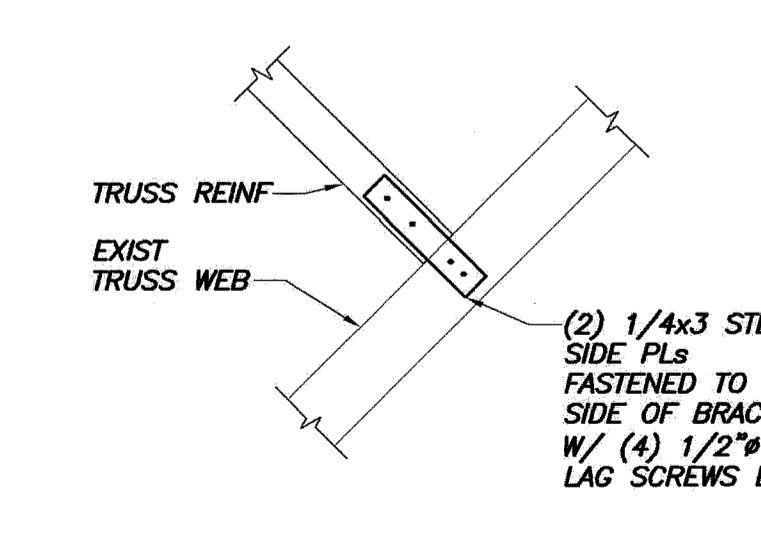
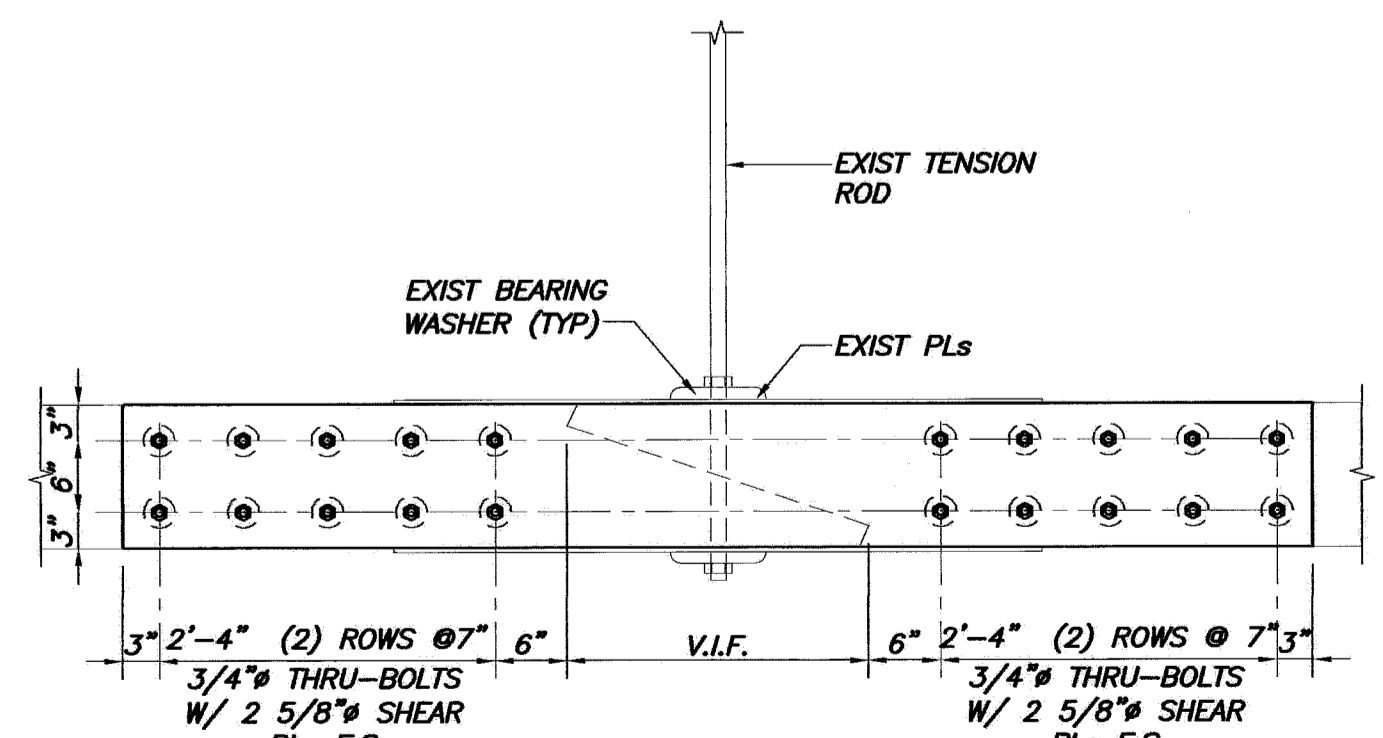
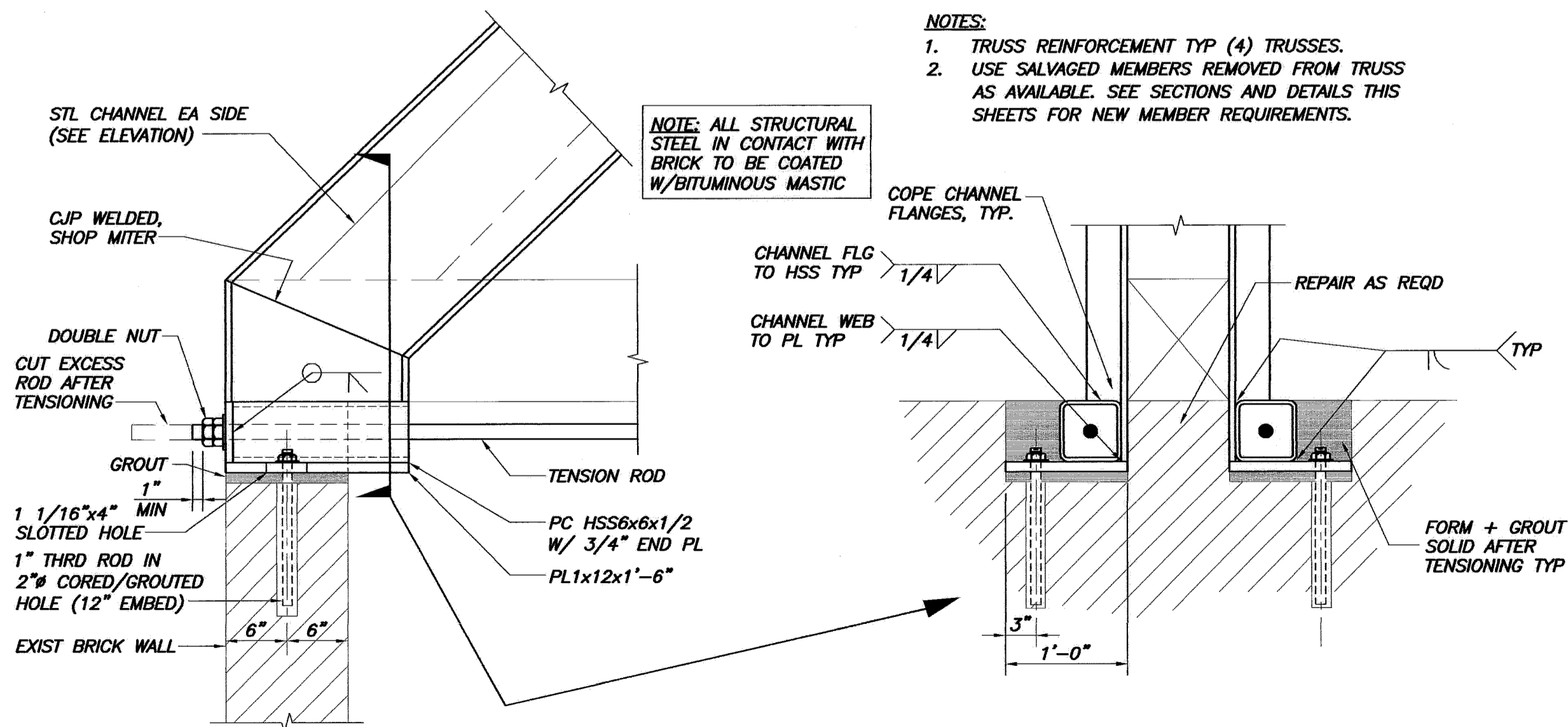
TRUSS "B" REINFORCEMENT

1/4"=1'-0"

NOTES:

1. TRUSS REINFORCEMENT TYP (4) TRUSSES.
2. USE SALVAGED MEMBERS REMOVED FROM TRUSS AS AVAILABLE. SEE SECTIONS AND DETAILS THIS SHEETS FOR NEW MEMBER REQUIREMENTS.

NOTE: ALL STRUCTURAL STEEL IN CONTACT WITH BRICK TO BE COATED W/BITUMINOUS MASTIC



CWS

CWS Architects

Architecture
Space Planning
Value Design

434 Cumberland Avenue
Portland, ME 04101
Phone: (207)774-4441
Fax: (207)774-4016

www.CWSarch.com

STATE OF MAINE
PAUL B. BECKER
NO. 8554

Owner:
Avesta Munjoy Commons, LP.
307 Cumberland Ave.
Portland, Maine 04101
TEL. 207-553-7780

Client:

Munjoy Commons Apartments

Portland, Maine

BECKER
Structural engineers, inc.
75 York Street
Portland, ME 04103-4701
Tel. 207-679-3288
Fax. 207-679-3922

Project No: 07429

Drawing Title:
SHAILER SECTIONS & DETAILS

Scale: AS NOTED
Date: AUGUST 28, 2009

Revisions:

Drawing Number:
SHAILER S2.2