

1 LAYOUT, LIGHTING + PLANTING PLAN
SCALE: 1" = 20'

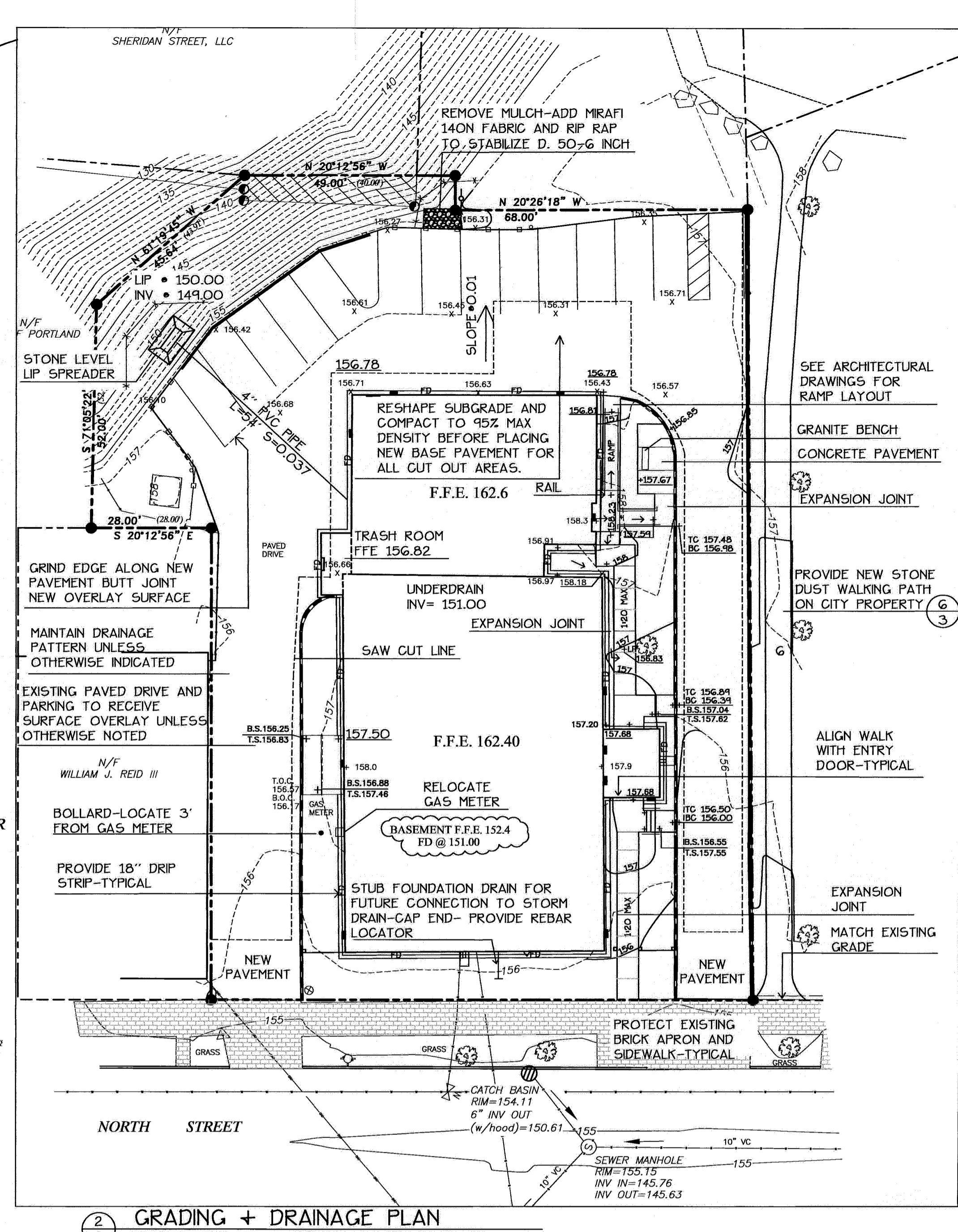
LIGHTING SCHEDULE

KEY	QTY	DESCRIPTION
AA	4	RA172_100MH-ED17
BB	1	RA175_100MH-ED17
CC	2	ANS2_15LED
DD	1	WD18x3_175PMH-ED2B_HS (250W PMH Source File)
EE	1	WD18x4_175PMH-ED2B_HS (250W PMH Source File)
FF	2	WD14x3_100PMH-ED17_HS

PLANT LIST

KEY	QTY	BOTANICAL NAME	COMMON NAME	SIZE
TREES				
A. CAN	2	AMELANCHIAR CANADENSIS	NATIVE SHADBUSH	6'-7' CLUMP
B. NG	2	BETULA NIGRA	RIVER BIRCH	12'-14' CLUMP
C. ALT	1	CORNUS ALTERNIFOLIA	PAGODA DOGWOOD	5'-6" SINGLE STEM
G. TRI	1	GLEDITSIA TRICANTHOS INERMIS 'SUNBURST'	SUNBURST HONEYLOCUST	2" CAL
M. PRA	3	MALUS 'PRAIRIE FIRE'	PRAIRIE FIRE CRAB	2" CAL
M. GUI	2	MALUS 'QUINZAM'	GUENIVERE CRAB	2" CAL
P. PUN	3	PICEA PUNGENS	COLORADO GREEN SPRUCE	6'-7' HT
SHRUBS				
A. KIM	2	AZALEA 'KIMBERLY'S DOUBLE PINK'	KIMBERLY'S DOUBLE PINK AZALEA	#2
C. ALN	4	CLETHRA ALNIFOLIA	SWEET PEPPERBUSH	#2
F. GAR	7	FOTHERGILLA GARDINII	BOTTLEBRUSH	#2
L. BEN	4	LINDERA BENZON	SPICEBUSH	3'-4' HT
K. TID	4	KALMIA 'TIDDLYWINKS'	TIDDLYWINKS MT LAUREL	#2
R. RUG	25	ROSA RUGOSA 'RUBRUM'	SHRUB ROSE	3'-4' HT
R. BUB	8	RHODODENDRON 'BUBBLEGUM'	BUBBLEGUM RHODODENDRON	#3
R. CAP	3	RHODODENDRON 'CAPSTRANO'	CAPSTRANO RHODODENDRON	#3
R. TOW	3	RHODODENDRON 'TOWHEAD'	TOWHEAD RHODODENDRON	#3
V. COR	3	VACCINIUM CORYMBOSUM	HIGHBUSH BLUEBERRY VAR.	4'-5' HT
W. FLO	3	WEIGELA FLORIDA 'ELVERA'	ELVERA MIDNIGHT WINE WEIGELA	#3
PERENNIALS				
H. GRE	5		GREAT ESCAPE HOSTA	1 QT
I. SUN	4		SUN POWER HOSTA	1 QT
L. SIB	6		CAESARS BROTHER IRIS	1 QT
M. DID	6		MONARDA DIDYMA 'GARDENVIEW SCARLET'	1 QT
S. AUT	6		SEDUM 'AUTUMN JOY'	1 QT
GROUNDCOVERS				
G. ODO	100	GALLIUM ODORATUM	SWEET WOODRUFF	3" POT
P. TER	24	FACHYSANDRA TERMINALIS	JAPANESE SPURGE	50 /FLAT

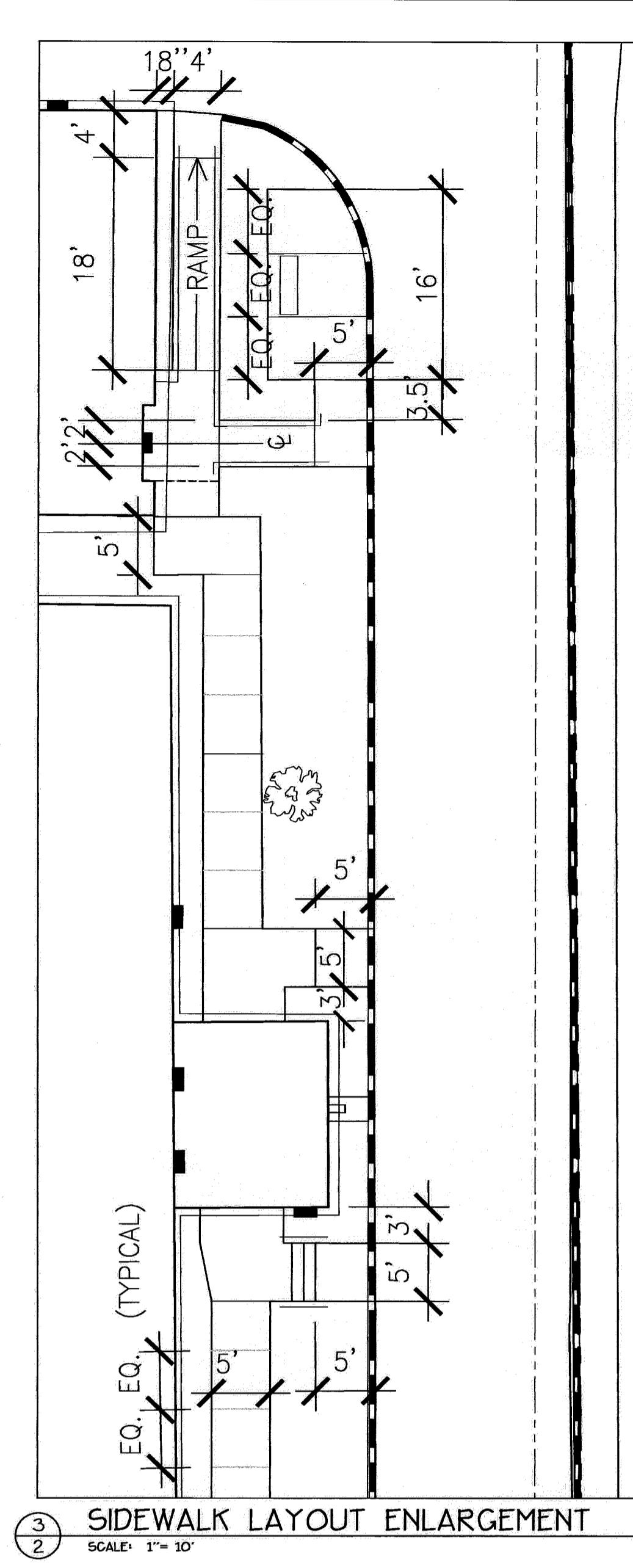
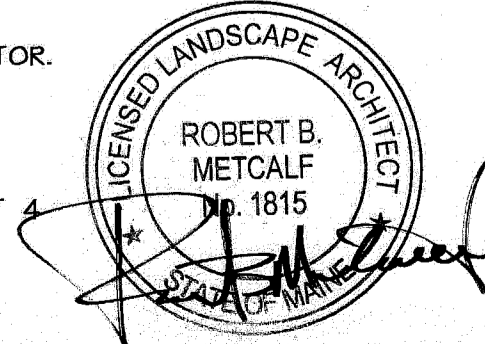
NOTE:
LOCATION OF PERENNIALS
AND GROUND COVERS
SHALL BE COORDINATED
WITH PROJECT LANDSCAPE
ARCHITECT IN THE FIELD



2 GRADING + DRAINAGE PLAN
SCALE: 1" = 20'

PLANT NOTES

- CALL DIG-SAFE (1-888-344-7233) PRIOR TO BEGINNING WORK. THE LANDSCAPE CONTRACTOR IS ADVISED OF THE PRESENCE OF UNDERGROUND UTILITIES AND SHALL VERIFY THE EXISTENCE AND LOCATION OF SAME BEFORE COMMENCING AND DIGGING OPERATIONS. THE LANDSCAPE CONTRACTOR SHALL REPLACE OR REPAIR UTILITIES PAVING, WALKS, CURBING, ETC. DAMAGED IN PERFORMANCE OF THIS JOB AT NO ADDITIONAL COST TO OWNER.
- CONTRACTOR SHALL THOROUGHLY FAMILIARIZE HIMSELF WITH ALL SITE CONDITIONS PRIOR TO CONSTRUCTION BIDDING.
- DO NOT SCALE FROM DRAWINGS. ANY OMISSIONS IN DIMENSIONING SHALL BE REPORTED IMMEDIATELY TO THE LANDSCAPE ARCHITECT. ANY DISCREPANCIES BETWEEN DRAWINGS, DETAILS, NOTES AND SPECIFICATIONS SHALL BE IMMEDIATELY REPORTED TO THE LANDSCAPE ARCHITECT FOR FURTHER DIRECTION AND RESOLUTION BEFORE ANY ADDITIONAL WORK PROCEEDS.
- PROVIDE SMOOTH TRANSITION WHERE NEW WORK MEETS EXISTING CONDITIONS.
- CONTRACTOR SHALL FURNISH AND PLACE 12 INCHES OF LOAM IN ALL SHRUB BEDS, 30 INCHES IN ALL TREE PITS, AND 6 INCHES UNDER ALL TURF AREAS. THE LANDSCAPE CONTRACTOR SHALL COORDINATE SUBGRADE PREPARATION WITH THE GENERAL CONTRACTOR PRIOR TO PLACING LOAM.
- ALL PLANT MATERIAL INSTALLED SHALL MEET THE SPECIFICATIONS OF "AMERICAN STANDARDS FOR NURSERY STOCK BY THE AMERICAN ASSOCIATION OF NURSEYMEN".
- ALL PLANT MATERIAL SHALL BE FREE FROM INSECTS AND DISEASE.
- ALL PLANTING SHALL BE DONE IN ACCORDANCE WITH ACCEPTABLE HORTICULTURAL PRACTICES. THIS IS TO INCLUDE PROPER PLANTING MIX, PLANT BED AND TREE FIT PREPARATION, PRUNING STAKING OR GUYING WRAPPING, SPRAYING, FERTILIZATION, PLANTING AND ADEQUATE MAINTENANCE UNTIL ACCEPTANCE FROM THE OWNER.
- ALL GRASS, OTHER VEGETATION AND DEBRIS SHALL BE REMOVED FROM ALL PLANTING AREAS PRIOR TO PLANTING.
- EXISTING TREES TO BE PRESERVED SHALL BE PROTECTED DURING CONSTRUCTION AND SHALL BE THE RESPONSIBILITY OF THE GENERAL CONTRACTOR.
- ALL SHRUB BEDS AND TREE PITS SHALL BE MULCHED WITH 3" CLEAN SHREDDED BLACK MULCH.
- ANY DEVIATION FROM THE LANDSCAPE PLAN, INCLUDING PLANT LOCATION, SELECTION, SIZE, QUANTITY, OR CONDITION SHALL BE REVIEWED AND APPROVED BY THE OWNER, LANDSCAPE ARCHITECT AND PLANNING DEPARTMENT PRIOR TO INSTALLATION ON SITE.
- WHERE INDICATED ON PLAN, PLANTING SOIL MIXTURE FOR GROUND COVER AND PERENNIAL BED AREAS SHALL CONSIST OF FOUR PARTS TOPSOIL, TWO PARTS SPHAGNUM PEAT MOSS, AND ONE PART HORTICULTURAL PERLITE BY VOLUME. PEAT MOSS MAY BE SUBSTITUTED WITH WELL-ROTTED OR DEHYDRATED MANURE OR COMPOST. ROTOTILL BEDS TO A DEPTH OF 8 INCHES.
- DAMAGE TO EXISTING SITE IMPROVEMENTS DURING INSTALLATION OF LANDSCAPE MATERIAL SHALL BE THE RESPONSIBILITY OF THE LANDSCAPE CONTRACTOR.
- ALL LAWNS AND PLANT MATERIALS SHALL BE GUARANTEED FOR A PERIOD OF TWO (2) YEARS.
- ALL LAWN AREAS/ PLANTING BEDS SHALL BE ROTOTILLED TO A MINIMUM DEPTH OF 12 INCHES. SOIL SHALL BE AMENDED USING "SUPERHUMUS" AS PROVIDED BY NEW ENGLAND ORGANICS OR APPROVED EQUAL. SUPERHUMUS SHALL BE INCORPORATED AT A RATE OF CUBIC FEET PER SQUARE YARD OF PLANTING BED. THOROUGHLY INCORPORATE SUPERHUMUS INTO SOIL.
- PITCH SPLASH BLOCK AWAY FROM BUILDING TYPICAL.



3 SIDEWALK LAYOUT ENLARGEMENT
SCALE: 1" = 10'

LEGEND

	EXISTING	PROPOSED
PROPERTY LINE	---	---
IRON PIPE	● I.R.F./A.P.F.	---
GRANITE MONUMENT	□	---
EDGE OF PAVEMENT	---	---
CURB	---	---
ABUTTER PROPERTY LINE	---	---
UTILITY POLE	○	---
WATER VALVE	⊗	---
HYDRANT	⊕	---
UTILITY DRAIN	⊖	---
OVERHEAD UTILITY	—OHU—	---
UNDERGROUND ELECTRIC	—UE—	---
SEWER/WATER LINE	---	---
GROUNDCOVER	---	---
DECIDUOUS TREE	⊗	⊗
PERENNIALS	---	---
SEWER MANHOLE	⊙	---
CONTOUR	---50---	---
SPOT ELEVATION	118.5	118.5
WATER DOWN SPOUT	---	---
POLE MOUNTED LIGHT	---	---
BUILDING MOUNTED LIGHT	---	---
GAS VALVE	⊗	---

Prepared For:
Owner:
Avesta Housing
307 Cumberland Avenue
Portland, Maine 04101

Prepared By:
MITCHELL & ASSOCIATES
Landscape Architects
The Staples School
70 Center Street
Portland, Maine 04101
Tel: (207) 774-4427

Munjoy Commons: Shailer
North Street
Portland, Maine

Date:
AUGUST 28, 2009

Issued For:
BIDDING AND PERMITTING

Revisions:

Reproduction or reuse of
this document without the
expressed written consent of
Mitchell & Associates is prohibited.

Title:
SITE PLAN

Scale:
AS NOTED

North:
Sheet No:
2