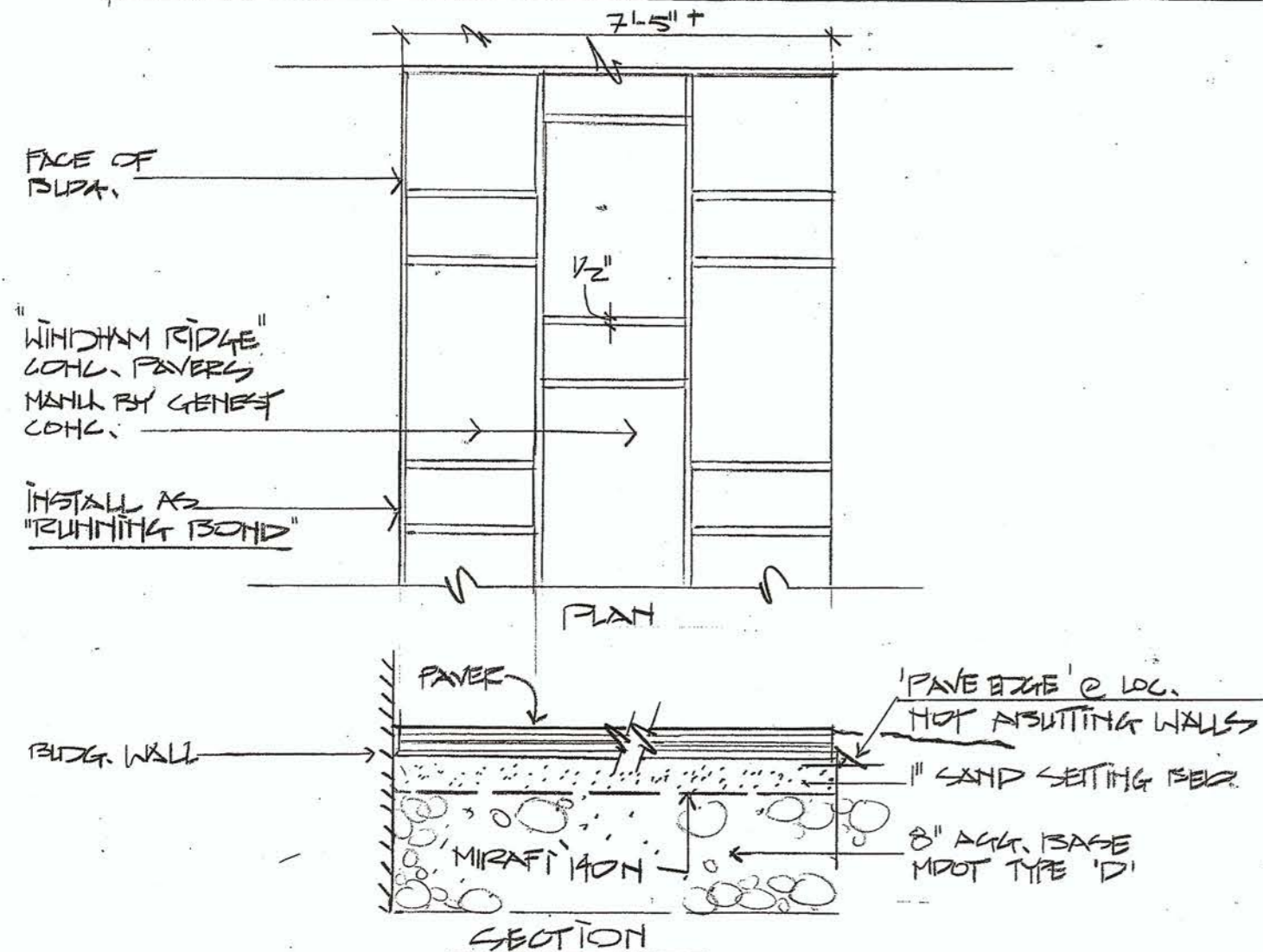
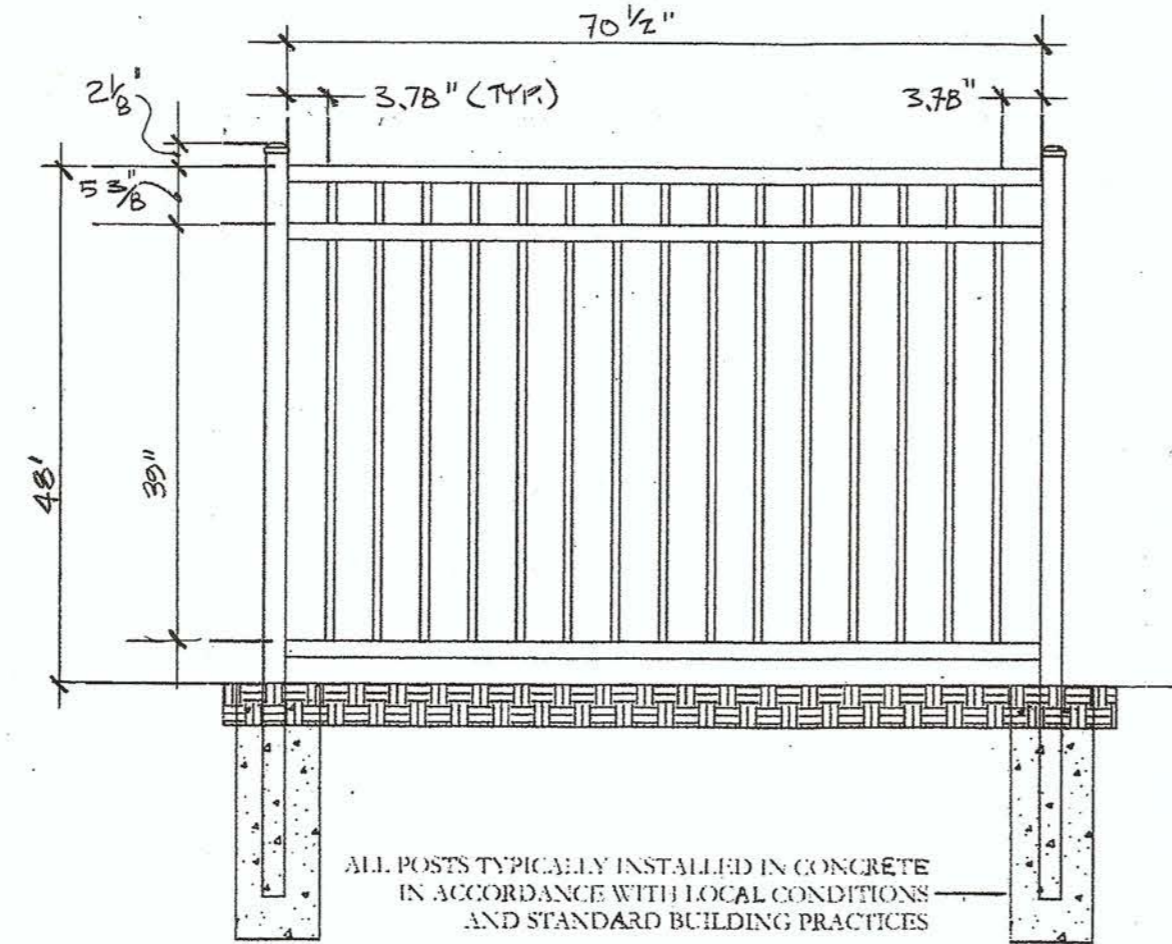


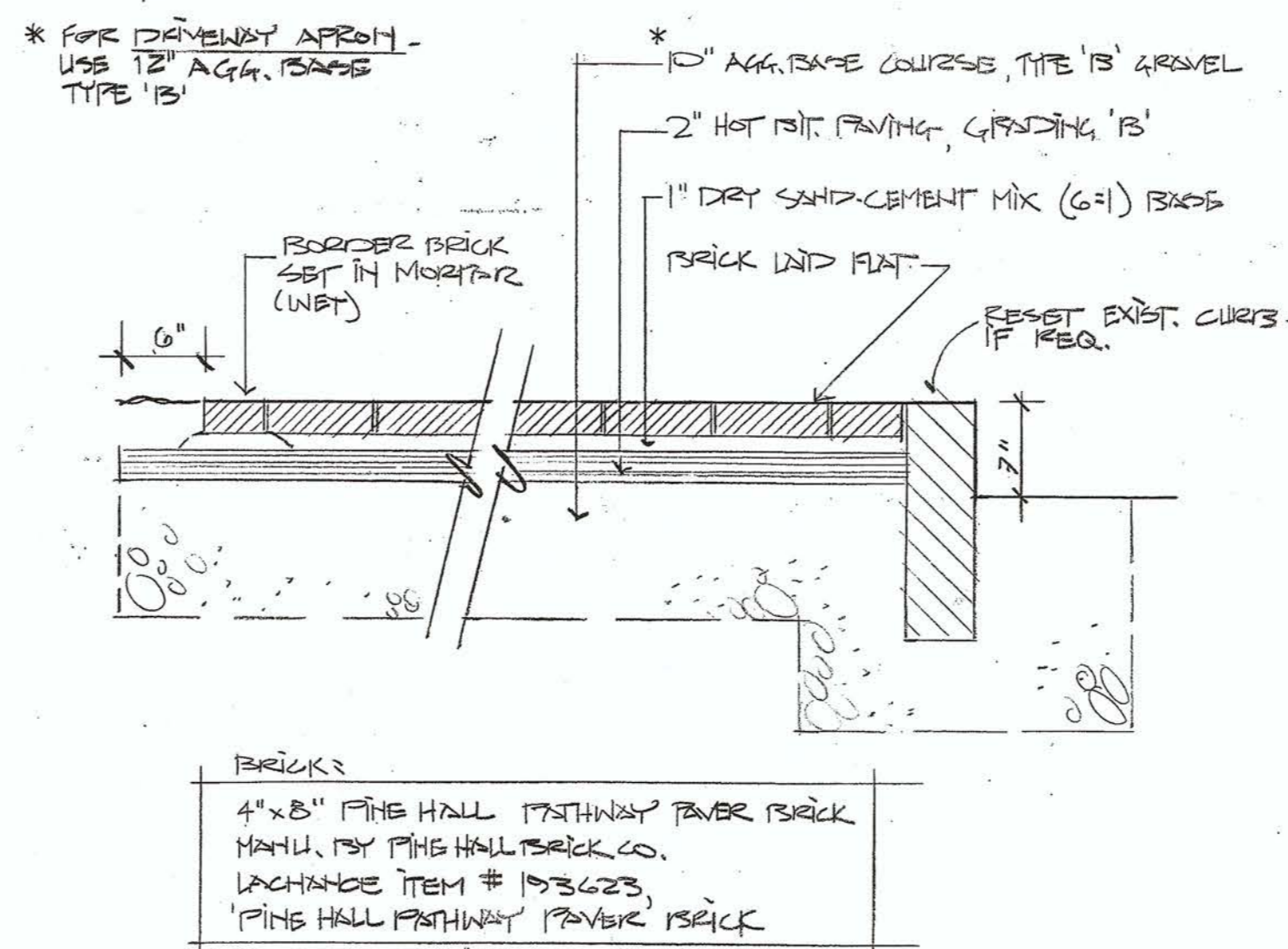
SITE PLAN
1/8" = 1'-0"



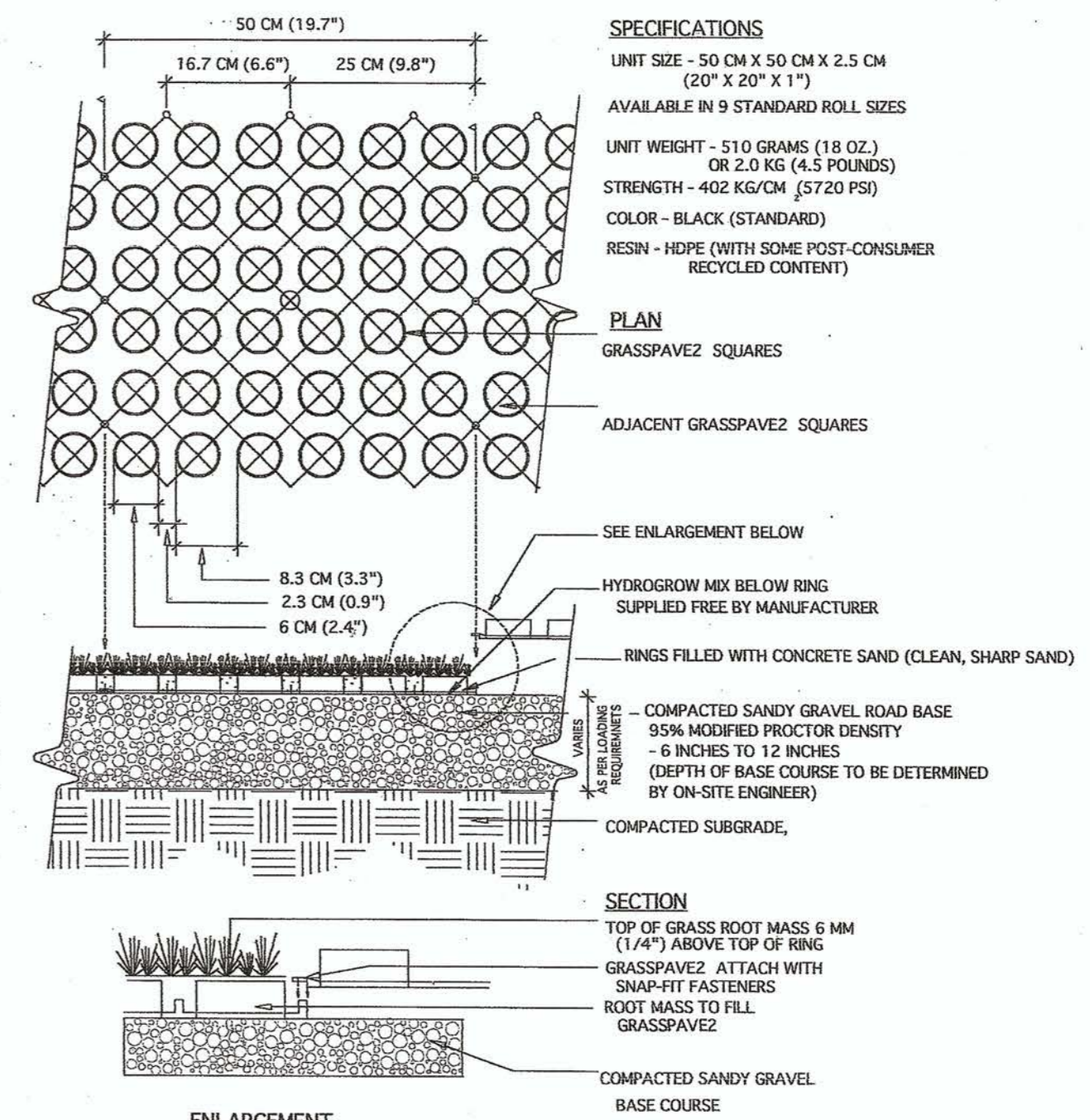
CONCRETE PAVER DETAIL
NTS



METAL FENCE DETAIL
NTS
WINDSOR METAL FENCE MANU. BY JERATH MANU. CO. - TUBULAR STEEL OR ALUM.



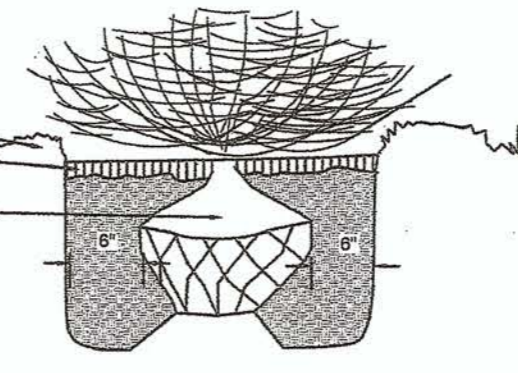
WALK PAVING DETAIL
CITY OF PORTLAND STANDARD



GRASSPAVE DETAIL
NTS

NOTE: SHRUBS SHALL BEAR SAME RELATION TO GRADE AS PRIOR TO PLANTING.

3" BARK MULCH W/ 4" SAUCER REMOVE BURLAP FROM TOP 1/2 BALL



SHRUB PLANTING DETAIL
NTS

PLANT LIST

SHRUBS

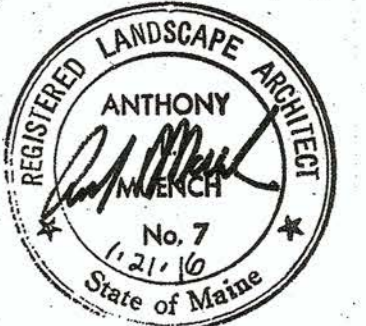
KEY	COMMON & BOTANICAL NAME	SIZE	ROOT	QTY	NOTES
A	SUMMER SNOWFLAKE VIBURNUM V. PLICATUM Var. tomentosum 'Summer Snowflake'	#10	B&B	2	
B	NORTHERN BAYBERRY M. PENNSYLVANICA	3' HT.	B&B	4	
C	LITTLE BLUE STEM GRASS SCHIZACHYRIUM SCOPARIUM		CONT	11	
E	SWITCH GRASS PANICUM VIRGATUM 'Cheyenne sky'		CONT	6	

PERENNIALS

AA	Stella d'Oro DAYLILY HEMEROCALLIS 'Stella d'Oro'			10	
----	--	--	--	----	--

PLANTING NOTES

- The contractor shall supply all plants in quantities sufficient to complete the work shown on plan. Any discrepancies between quantities shown on plant list and those required by this drawing shall not entitle contractor to additional remuneration.
- Any plant substitutions must be approved by the owner, landscape architect and Bath City Arborist.
- Any tree or shrub which comes over or under any utility shall be relocated on the site by the landscape architect.
- All lawn areas to have 6" of topsoil unless noted otherwise.
- All trees and shrubs shall be placed in the designated areas as shown on the plan and before planting shall be approved by the landscape architect.
- The contractor shall relocate any tree or shrub as directed by the landscape architect.
- All plant material installed shall meet the specifications of the American Standard for Nursery Stock (latest edition) as set forth by the American Association of Nurserymen.
- The landscape contractor shall replace or repair to original condition any and all utilities, paving, curbing, preserved and existing plant material, etc., damaged as a result of their operations at no additional cost to the owner.



Anthony Munch Landscape Architect
94 Commercial Street Portland, Maine 04102 807.241.6452

DATE: 1.21.16

SME
Sevee & Maher Engineers, Inc.
ENVIRONMENTAL • CIVIL • GEOTECHNICAL • WATER • COMPLIANCE
4 Blanchard Road, PO Box 85A, Cumberland Center, Maine 04021
Phone 207.829.5016 • Fax 207.829.5692 • www.smemaine.com

4 UNIT CONDO BUILDING
9 & 5 ROMASCO LANE
DAVID KLENICKI
PORTLAND, MAINE

LANDSCAPE PLAN

L-1