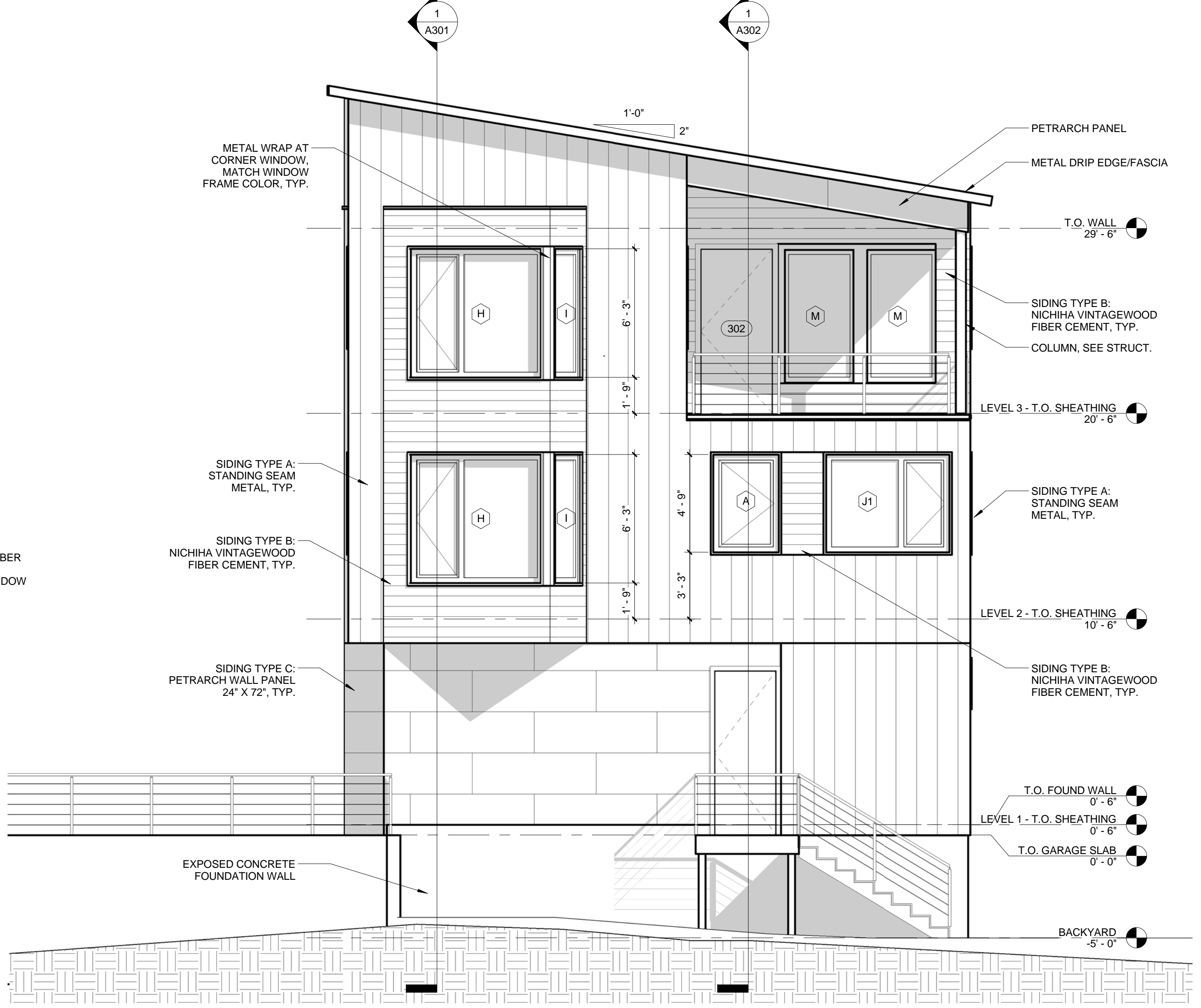


1 SOUTH ELEVATION
 1/4" = 1'-0"



2 WEST ELEVATION
 1/4" = 1'-0"

Room #	Name	Floor	Base	Wall Finish				Ceiling	Height	Flat / Slope	Comments
				North	East	South	West				
001	STORAGE	FL1	1X4	WL1	WL1	WL1	WL1	WL1	7-8 1/2"	FLAT	
101	ENTRY	FL2	1X4	WL1	WL1	WL1	WL1	WL1	8'-10"	FLAT	
102	GARAGE	FL1	1X4	WL1	WL1	WL1	WL1	WL1	8'-10"	FLAT	
103	CLOSET	FL2	1X4	WL1	WL1	WL1	WL1	WL1	VARIES	SLOPED	
104	CLOSET	FL2	1X4	WL1	WL1	WL1	WL1	WL1	8'-10"	FLAT	
201	HALL	FL5	1X4	WL1	WL1	WL1	WL1	WL1	8'-9 1/4"	FLAT	
202	DEN	FL5	1X4	WL1	WL1	WL1	WL1	WL1	8'-9 1/4"	FLAT	
203	LAUNDRY	FL4	1X4	WL1	WL1	WL1	WL1	WL1	8'-9 1/4"	FLAT	
204	CEDAR CLOSET	FL4	1X4	WL4	WL4	WL4	WL4	WL4	8'-9 1/4"	FLAT	
205	MASTER BEDROOM	FL5	1X4	WL1	WL1	WL1	WL1	WL1	8'-9 1/4"	FLAT	
206	WALK-IN CLOSET	FL5	1X4	WL1	WL1	WL1	WL1	WL1	8'-9 1/4"	FLAT	
207	MASTER BATHROOM	FL4	1X4	WL2/WL3	WL3	WL2/WL3	WL2	WL2	8'-9 1/4"	FLAT	1/2" PLYWOOD SUBFLOOR UNDER MARMOLEUM
208	GUEST BATHROOM	FL4	1X4	WL2/WL3	WL2/WL3	WL3	WL2/WL3	WL2	8'-9 1/4"	FLAT	1/2" PLYWOOD SUBFLOOR UNDER MARMOLEUM
208B	CLOSET	FL4	1X4	WL2	WL2	WL2	WL2	WL2	8'-9 1/4"	FLAT	
209	GUEST BEDROOM	FL5	1X4	WL1	WL1	WL1	WL1	WL1	8'-9 1/4"	FLAT	
210	ELEVATOR CAB	FL4	1X4	WL1	WL1	WL1	WL1	WL1	PER MANUF	FLAT	
210	CLOSET	FL5	1X4	WL1	WL1	WL1	WL1	WL1	8'-9 1/4"	FLAT	
300	KITCHEN	FL4	1X4	WL1	WL1/WL3	WL1/WL3	WL1	WL4	8'-9 1/4"	FLAT	
301	PANTRY	FL4	1X4	WL1	WL1	WL1	WL1	WL1	8'-9 1/4"	FLAT	
302	DINING ROOM	FL5	1X4	NA	NA	WL1	WL1	WL1	VARIES	SLOPED	
303	LIVING ROOM	FL5	1X4	WL1	WL1	WL1	WL1	WL1	VARIES	SLOPED	
304	CLOSET	FL5	1X4	WL1	WL1	WL1	WL1	WL1	8'-9"	FLAT	
305	POWDER ROOM	FL5	1X4	WL2/WL3	WL2	WL2	WL2	WL2	VARIES	SLOPED	
305	TERRACE	FL6	NA	WL5	WL5	NA	WL5	WL5	VARIES	SLOPED	
306	STUDY	FL5	1X4	WL1	WL1	WL1	WL1	WL1	VARIES	SLOPED	
ST1	STAIR										
ST2	STAIR	FL1	1X4	WL1	WL1	WL1	WL1	WL1	7-8 1/2"	FLAT	
ST2	STAIR										

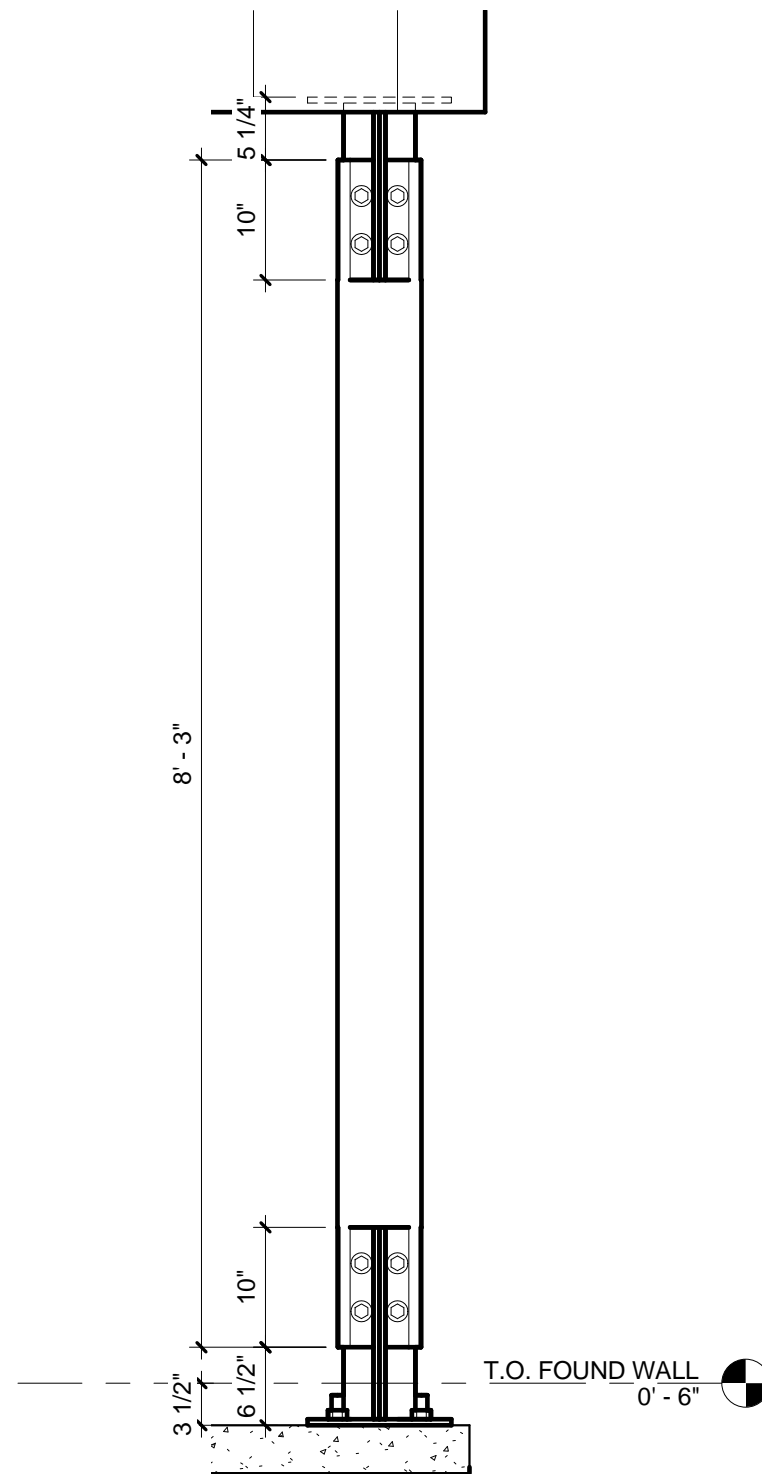
MATERIALS LEGEND

FLOORING:
 FL1: SEALED CONCRETE
 FL2: POLISHED AND STAINED CONCRETE
 FL3: UNFINISHED CONCRETE
 FL4: CERAMIC TILE
 FL5: WOOD
 FL6: WOOD DECKING

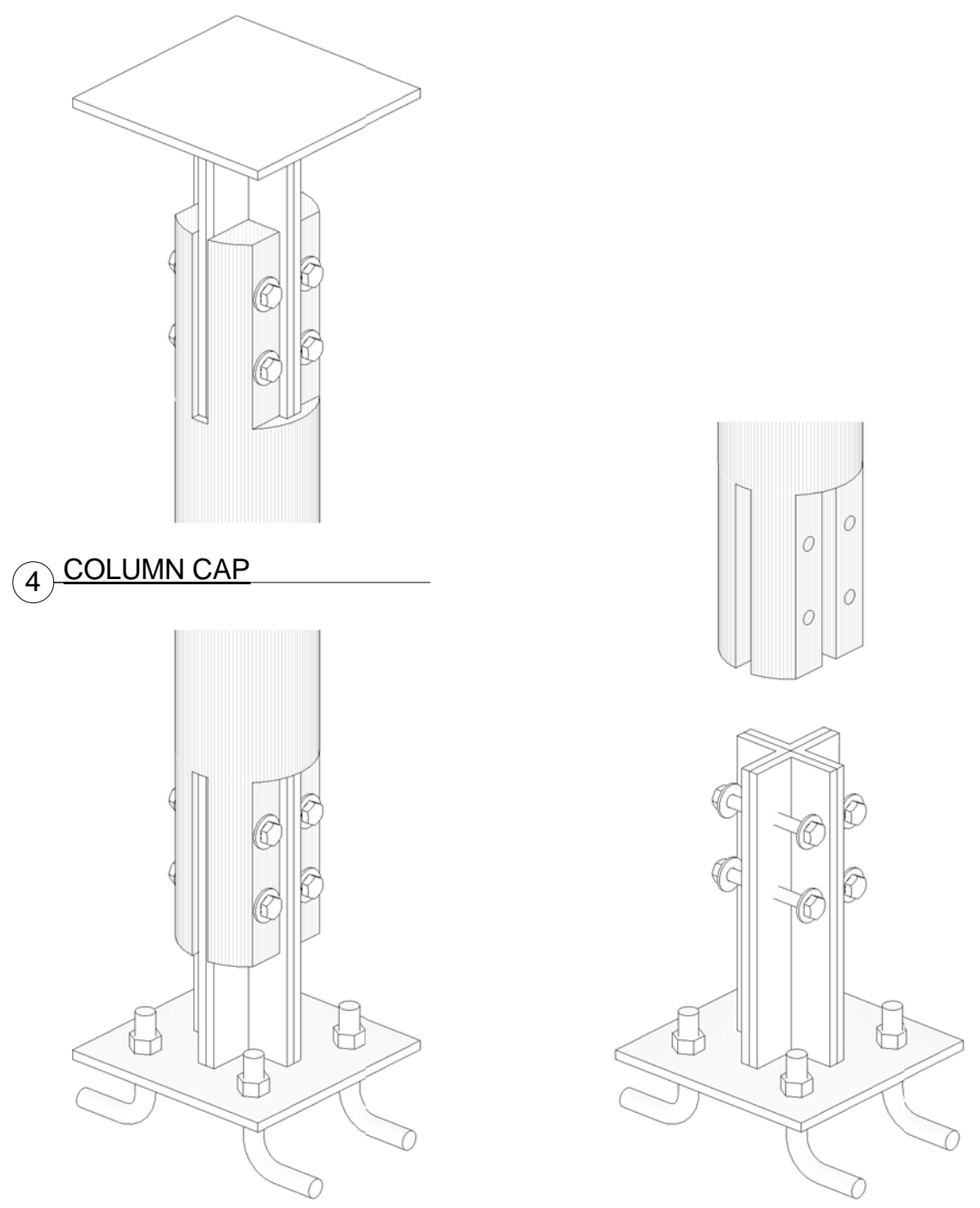
BASE:
 1X4: PAINTED 1X4 WOOD BASE WITH 1/4" DADO
 1X6: PAINTED 1X6 WOOD BASE WITH 1/4" DADO

WALL/CEILING:
 WL1: GYPSUM WALL BOARD - PAINTED
 WL2: MRX GYPSUM WALL BOARD - PAINTED
 WL3: CERAMIC TILE
 WL4: 1X4 T&G CEDAR
 WL5: 1X4 T&G WOOD

NOTES:
 FLOOR ELEVATION 0'-0" CORRESPONDS TO SURVEY ELEVATION 121'-0"

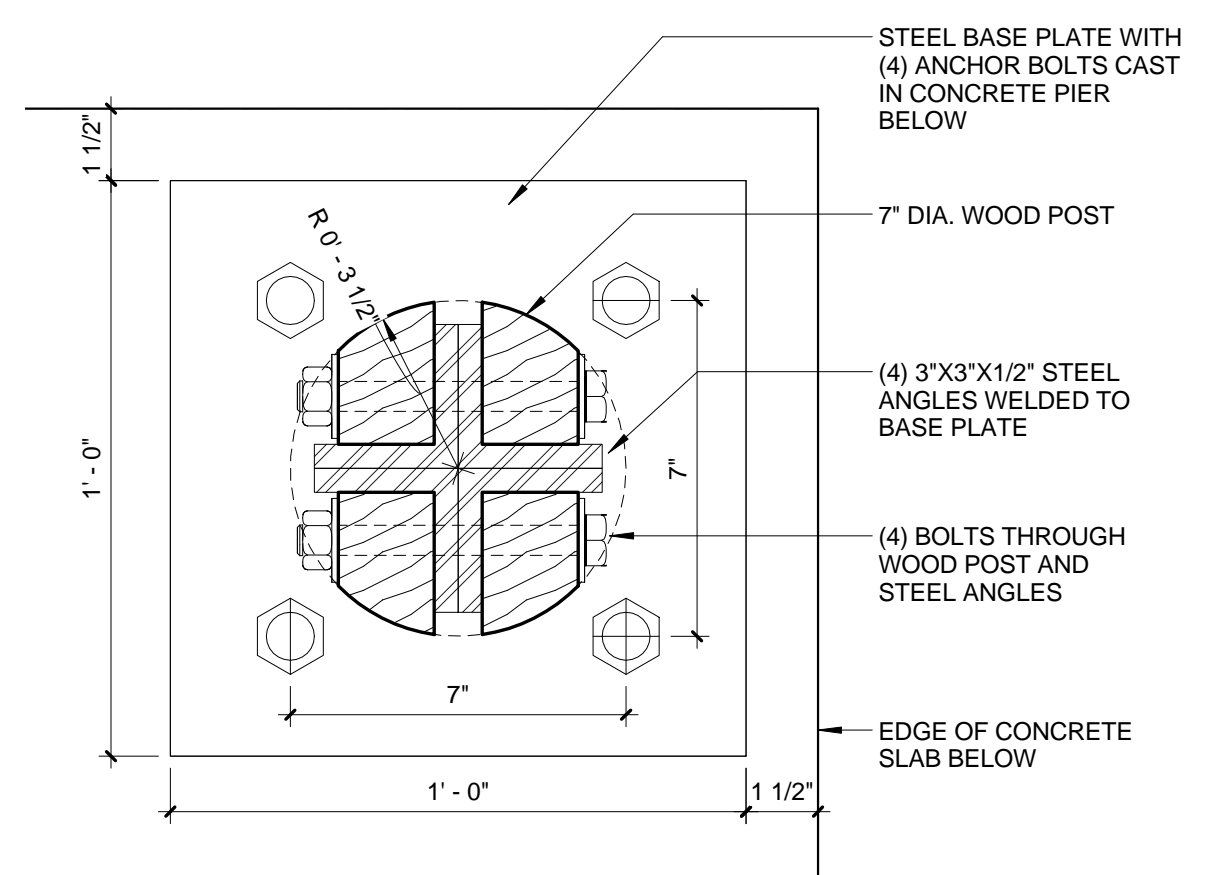


6 COLUMN ELEVATION
 3/4" = 1'-0"



3 COLUMN BASE

5 COLUMN BASE EXPLODED



7 COLUMN BASE PLAN
 3\"/>