



BOGG + KIEFNER RESIDENCE
100 SHERIDAN STREET, PORTLAND, MAINE



CONSULTANTS:

REVISIONS:

RE-ISSUED 10/17/14

ISSUED: 09/30/14

PROJECT No: 1410

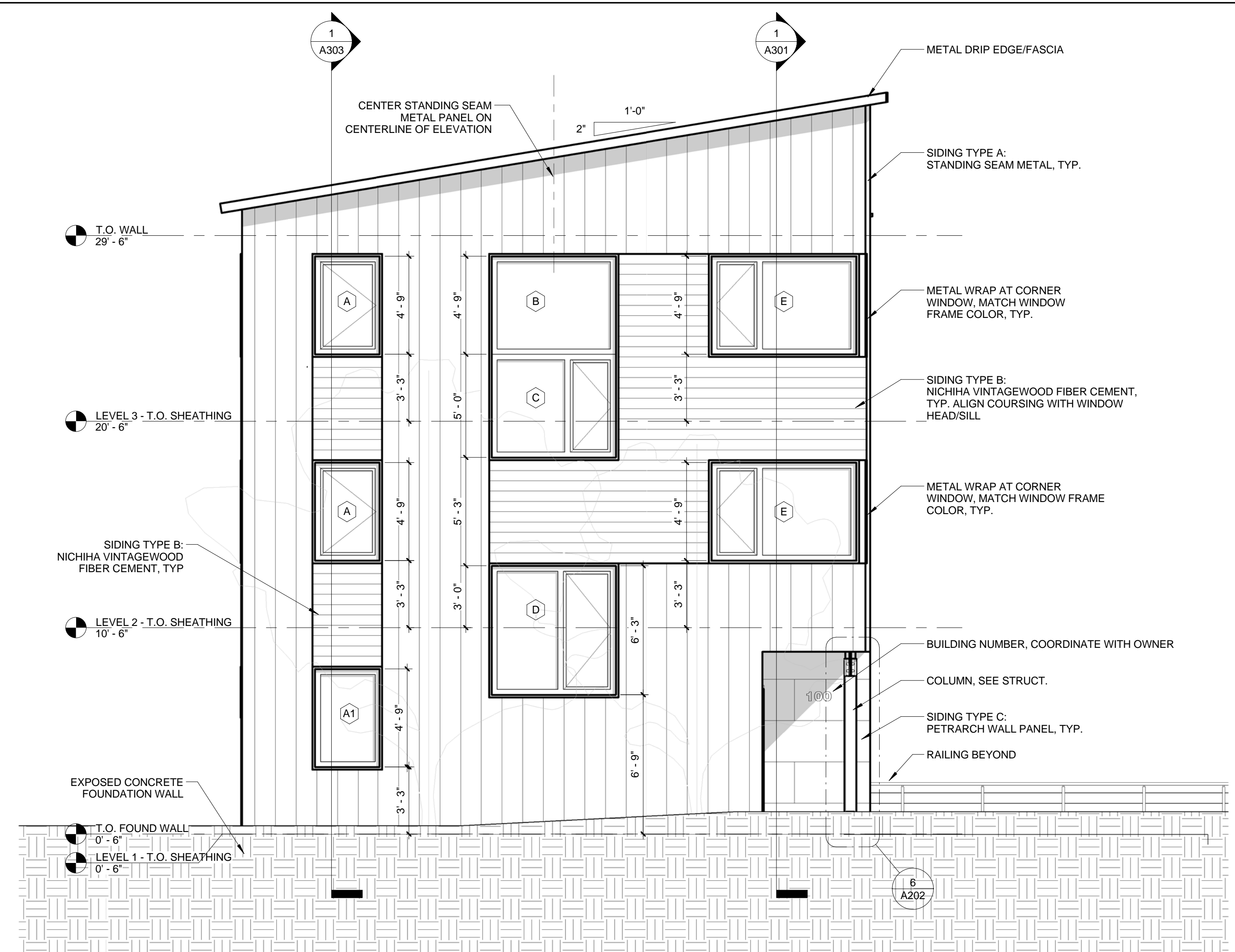
DRAWN BY: LB

CHECKED BY: HWH

SHEET TITLE:

EXTERIOR ELEVATIONS

A201



2 EAST ELEVATION
1/4" = 1'-0"

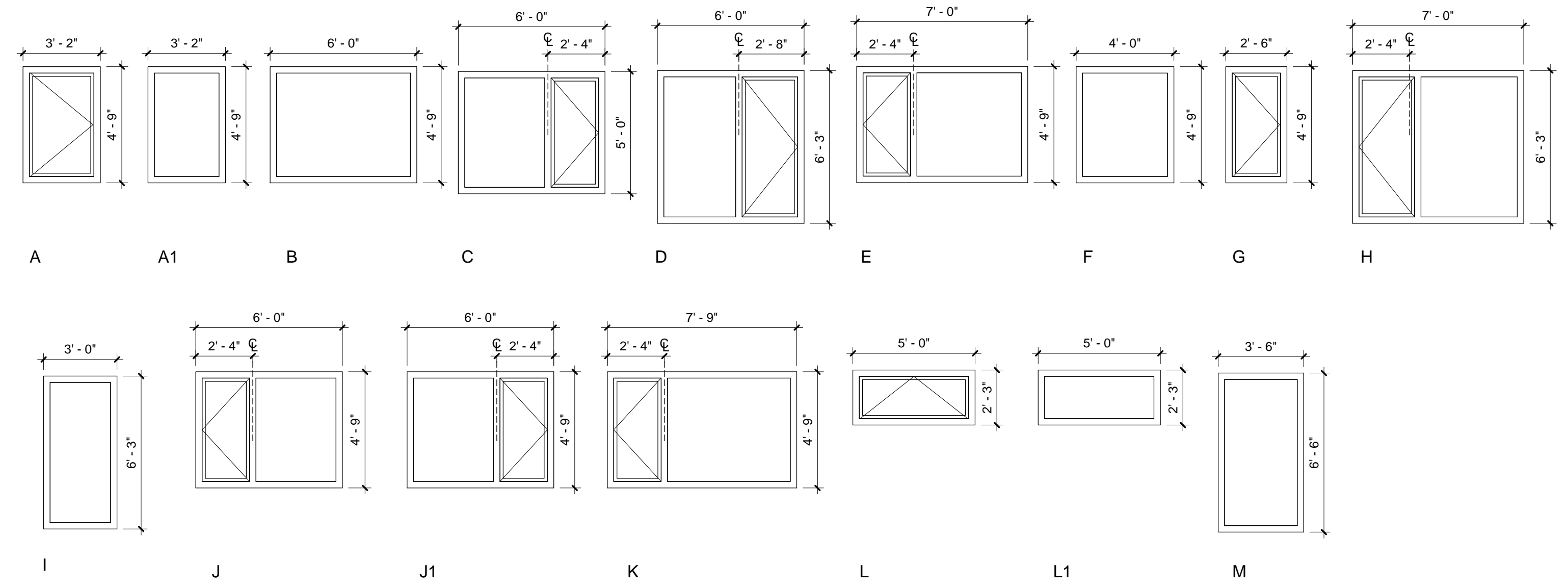


1 NORTH ELEVATION
1/4" = 1'-0"

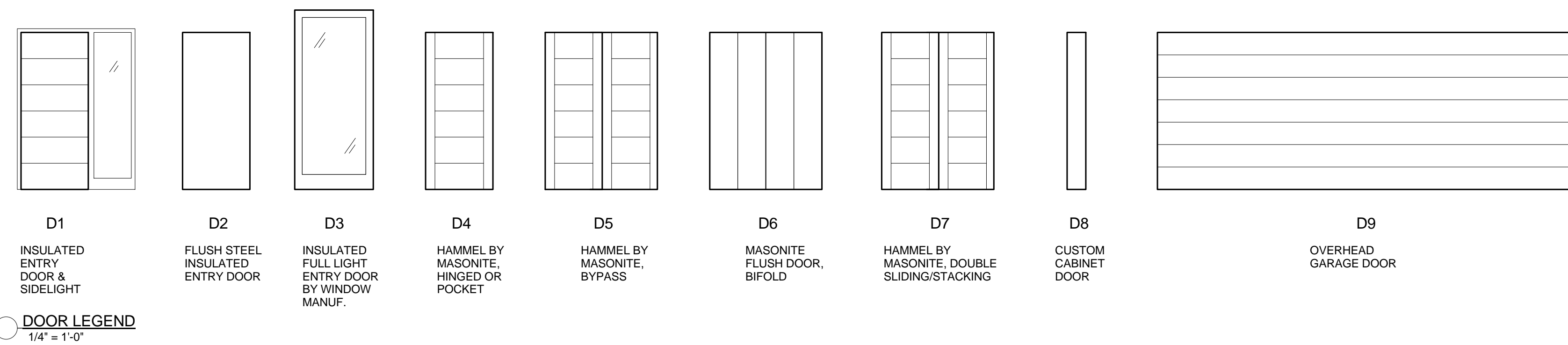
WINDOW SCHEDULE							
Type	Width	Height	Count	Operation	Notes	U-FACTOR	SHGC
A	3'-2"	4'-9"	5	CASEMENT	MEETS EGRESS REQUIREMENTS	0.18	0.39
A1	3'-2"	4'-9"	1	FIXED		0.17	0.47
B	6'-0"	4'-9"	1	FIXED		0.17	0.47
C	6'-0"	5'-0"	1	FIXED/CASEMENT	MEETS EGRESS REQUIREMENTS	0.17/0.18	0.46/0.39
D	6'-0"	6'-3"	1	FIXED/CASEMENT		0.17/0.46	0.46/0.39
E	7'-0"	4'-9"	2	CASEMENT/FIXED	MEETS EGRESS REQUIREMENTS	0.18/0.17	0.39/0.46
F	4'-0"	4'-9"	2	FIXED		0.17	0.47
G	2'-6"	4'-9"	4	CASEMENT	MEETS EGRESS REQUIREMENTS	0.18	0.39
H	7'-0"	6'-3"	2	CASEMENT/FIXED		0.18/0.17	0.39/0.46
I	3'-0"	6'-3"	2	FIXED		0.17	0.47
J	6'-0"	4'-9"	1	CASEMENT/FIXED	MEETS EGRESS REQUIREMENTS	0.18/0.17	0.39/0.46
J1	6'-0"	4'-9"	1	FIXED/CASEMENT	MEETS EGRESS REQUIREMENTS	0.17/0.18	0.46/0.39
K	7'-9"	4'-9"	1	CASEMENT/FIXED	MEETS EGRESS REQUIREMENTS	0.18/0.17	0.39/0.46
L	5'-0"	2'-3"	2	AWNING		0.18	0.39
L1	5'-0"	2'-3"	2	FIXED		0.17	0.47
M	3'-6"	6'-6"	2	FIXED		0.17	0.47
S	1'-6"	7'-0"	1	FIXED	ENTRY DOOR SIDELIGHT	0.18	0.39

- GENERAL NOTES:
 1. WINDOWS BY KOHL-TECH
 2. DARK BRONZE EXTERIOR COLOR, WHITE INTERIOR
 3. ALL GLASS TO BE TEMPERED AS REQUIRE BY CODE
 4. PROVIDE SCREENS ON ALL OPERABLE UNITS

DOOR SCHEDULE					
Mark	Type	Width	Height	Operation	Comments
101A	D1	3'-0"	7'-0"	EXTERIOR SWING	
101B	D4	3'-0"	7'-0"	SWING	
101C	D2	3'-0"	7'-0"	SWING	PAINT TO MATCH WALL COLOR
102A	D9	18'-0"	7'-0"	OVERHEAD GARAGE	
102B	D12	3'-0"	8'-0"		
102C	D2	3'-0"	7'-0"	SWING	
103	D4	2'-6"	7'-0"	SWING	
104	D5	5'-0"	7'-0"	TWO PANEL BYPASS	
202A	D4	3'-0"	7'-0"	SWING	
202B	D4	2'-6"	7'-0"	POCKET	
203	D4	3'-0"	7'-0"	POCKET	
204	D4	3'-0"	7'-0"	POCKET	
205	D4	3'-0"	7'-0"	POCKET	
207	D4	3'-0"	7'-0"	POCKET	
208A	D4	3'-0"	7'-0"	POCKET	
208B	D4	2'-6"	7'-0"	SWING	
209	D4	3'-0"	7'-0"	POCKET	
210	D5	5'-0"	7'-0"	BIFOLD	
300	D8	0'-10"	7'-0"	SWING	
301	D4	2'-6"	7'-0"	POCKET	
302	D3	3'-6"	8'-0"	EXTERIOR SWING	
304	D11	2'-0"	7'-0"		
305	D4	2'-6"	7'-0"	POCKET	
306A	D4	3'-0"	7'-0"	SWING	
306B	D7	5'-3"	7'-0"	DOUBLE SLIDING/STACKING	



WINDOW LEGEND
1/4" = 1'-0"



DOOR LEGEND
1/4" = 1'-0"

NOTES:
FLOOR ELEVATION 0'-0" CORRESPONDS TO SURVEY ELEVATION 121'-0"