



BOGG + KIEFNER RESIDENCE
100 SHERIDAN STREET, PORTLAND, MAINE

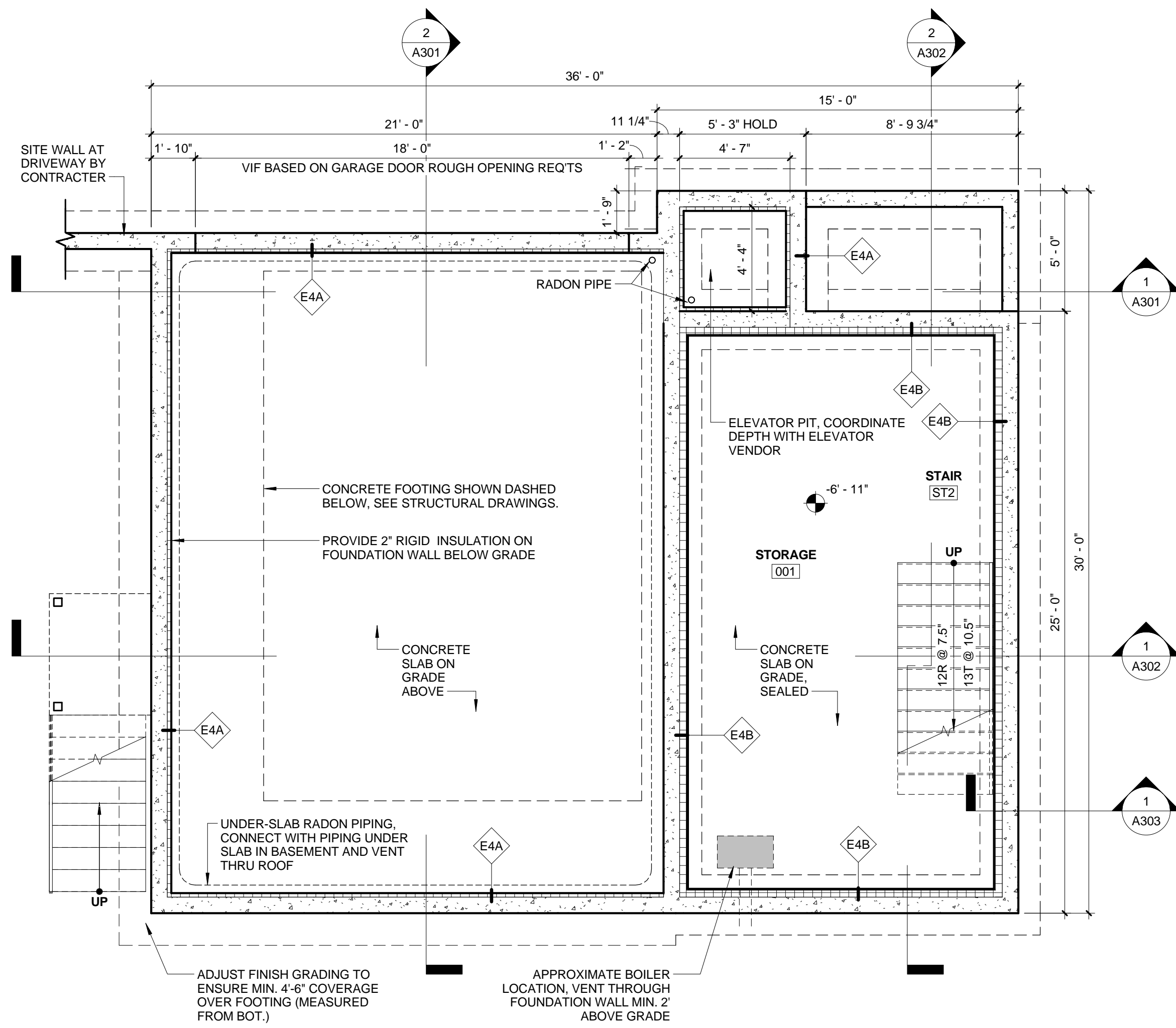
BR BURN
architecture for life
20 Maple St. Suite 201 Portland, ME 04101 (207) 774-6422

CONSULTANTS:

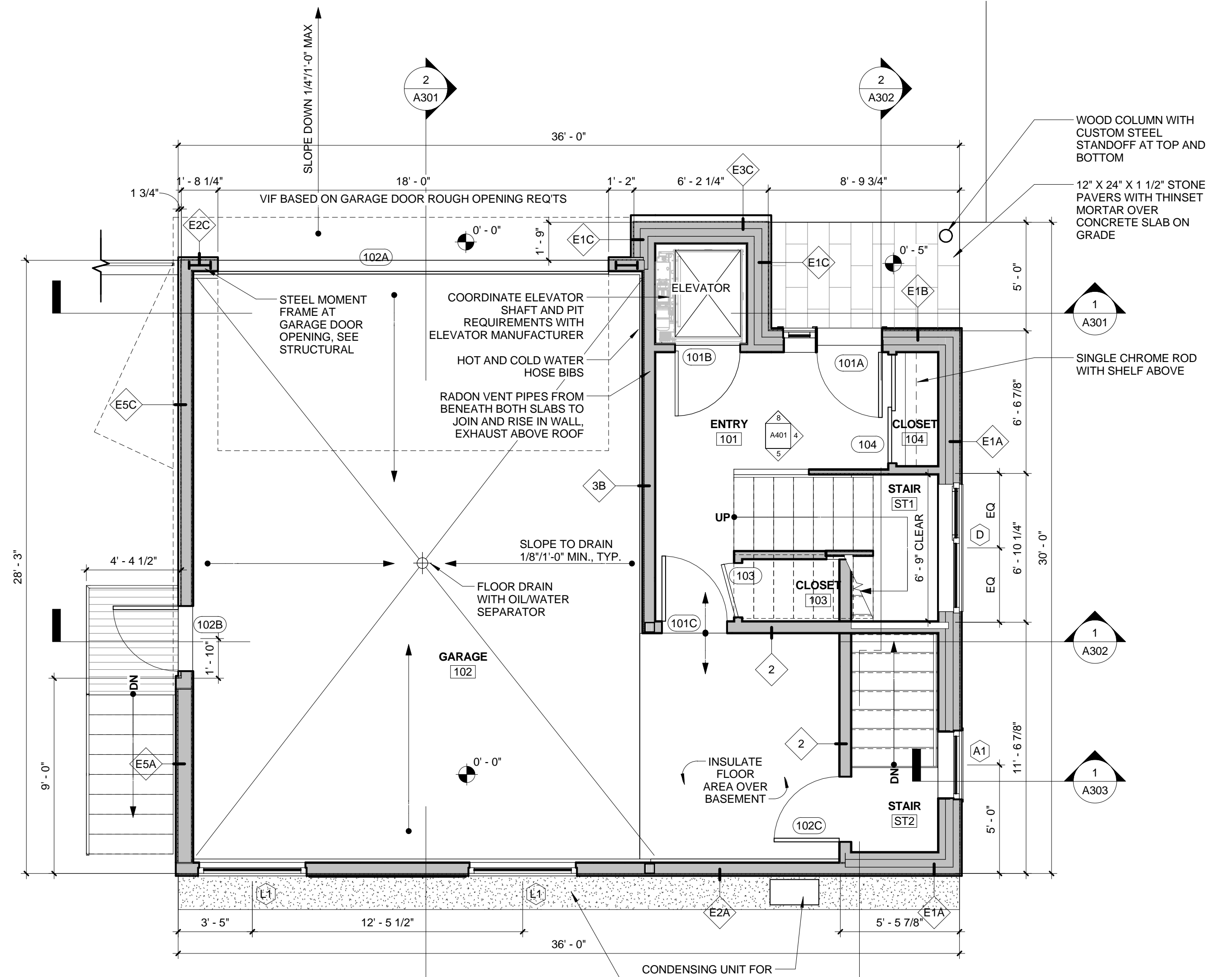
REVISIONS:
RE-ISSUED 10/17/14

ISSUED: 09/30/14
PROJECT No: 1410
DRAWN BY: LB
CHECKED BY: HWK
SHEET TITLE:
FLOOR PLANS

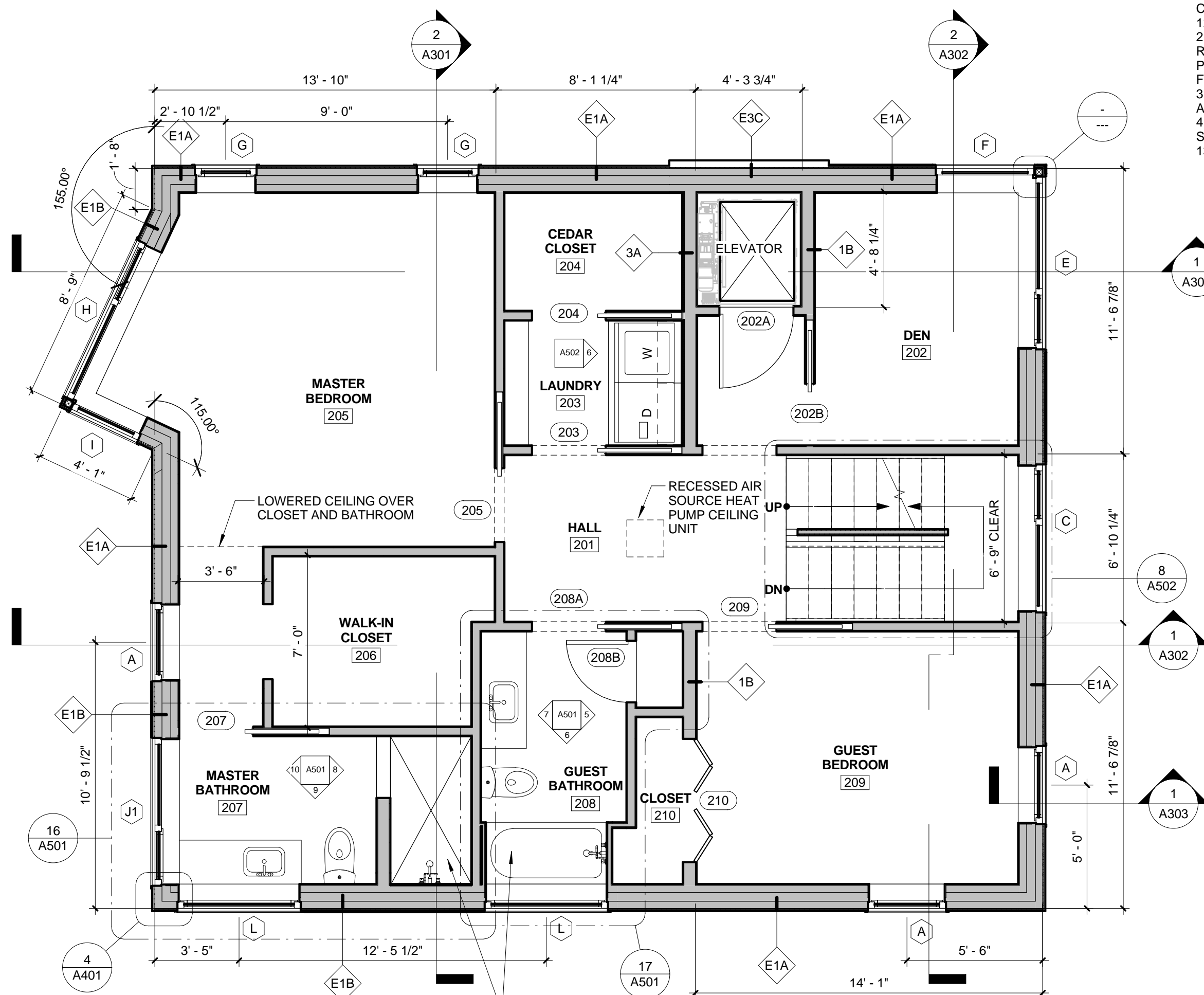
A101



1. BASEMENT PLAN
1/4" = 1'-0"

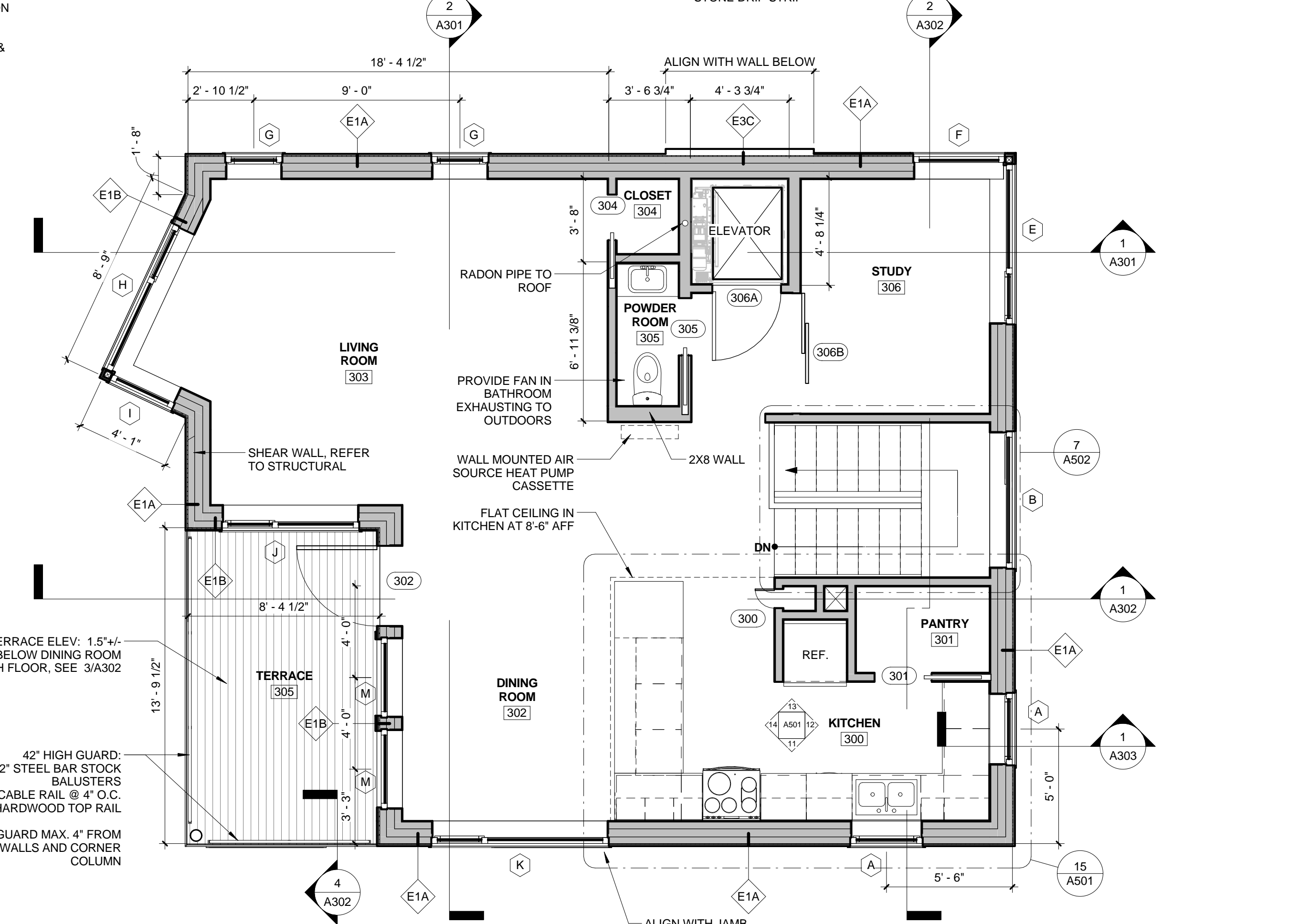


2. FIRST FLOOR PLAN
1/4" = 1'-0"



3. SECOND FLOOR PLAN
1/4" = 1'-0"

- GENERAL NOTES:
1. FLOOR ELEVATION 0'-0" CORRESPONDS TO SURVEY ELEVATION 121'-0"
 2. INSTALL FLAT CEILING IN POWDER ROOM 305, CLOSET 304, KITCHEN 300 & PANTRY 301. SEE FINISH SCHEDULE FOR FINISHES
 3. INSTALL DROPPED CEILINGS (8'-0" AFF) IN ROOMS 206, 207, 208 AND 210
 4. INSTALL RESIDENTIAL SPRINKLER SYSTEM IN COMPLIANCE WITH NFPA 13D



4. THIRD FLOOR PLAN
1/4" = 1'-0"

PROVIDE FANS IN BATHROOMS EXHAUSTING TO OUTDOORS. COORDINATE LOCATION ON EXTERIOR OF BUILDING WITH ARCHITECT

42" HIGH GUARD:
• 2 1/2" STEEL BAR STOCK BALUSTERS
• HORIZONTAL CABLE RAIL @ 4" O.C.
• HARDWOOD TOP RAIL
STOP GUARD MAX. 4" FROM ADJACENT WALLS AND CORNER COLUMN