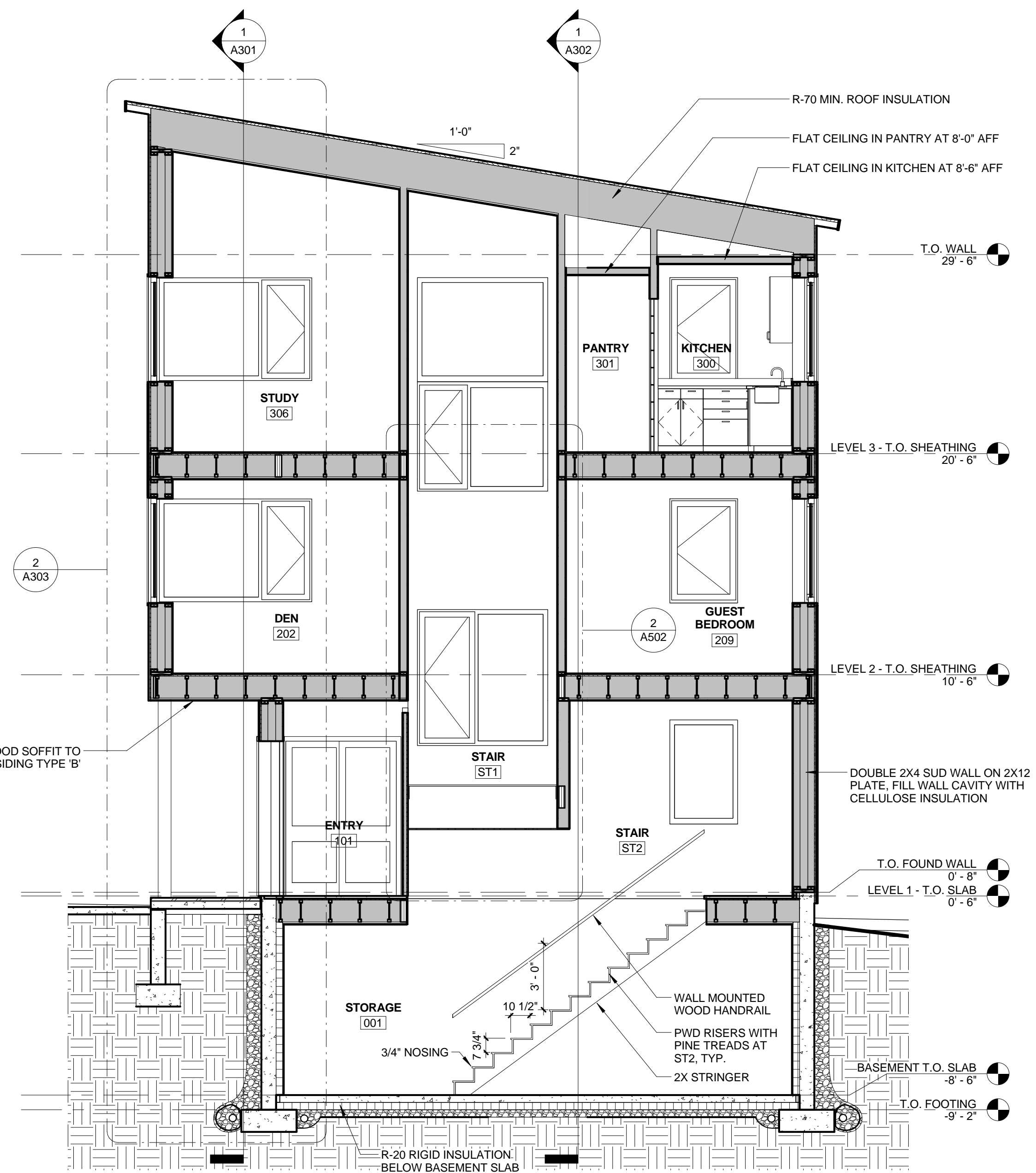
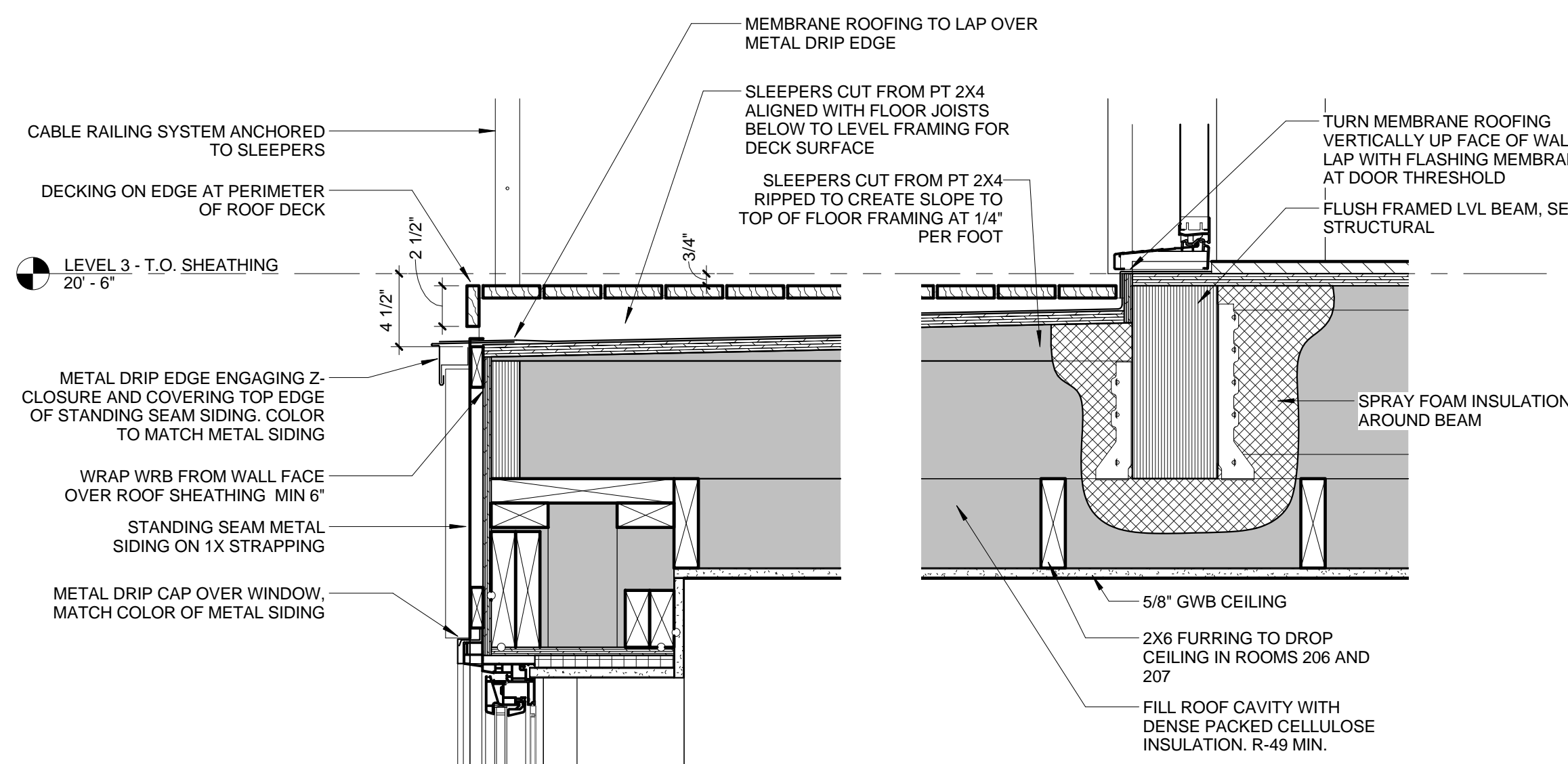


1 BUILDING SECTION - AT STAIR
 1/4" = 1'-0"

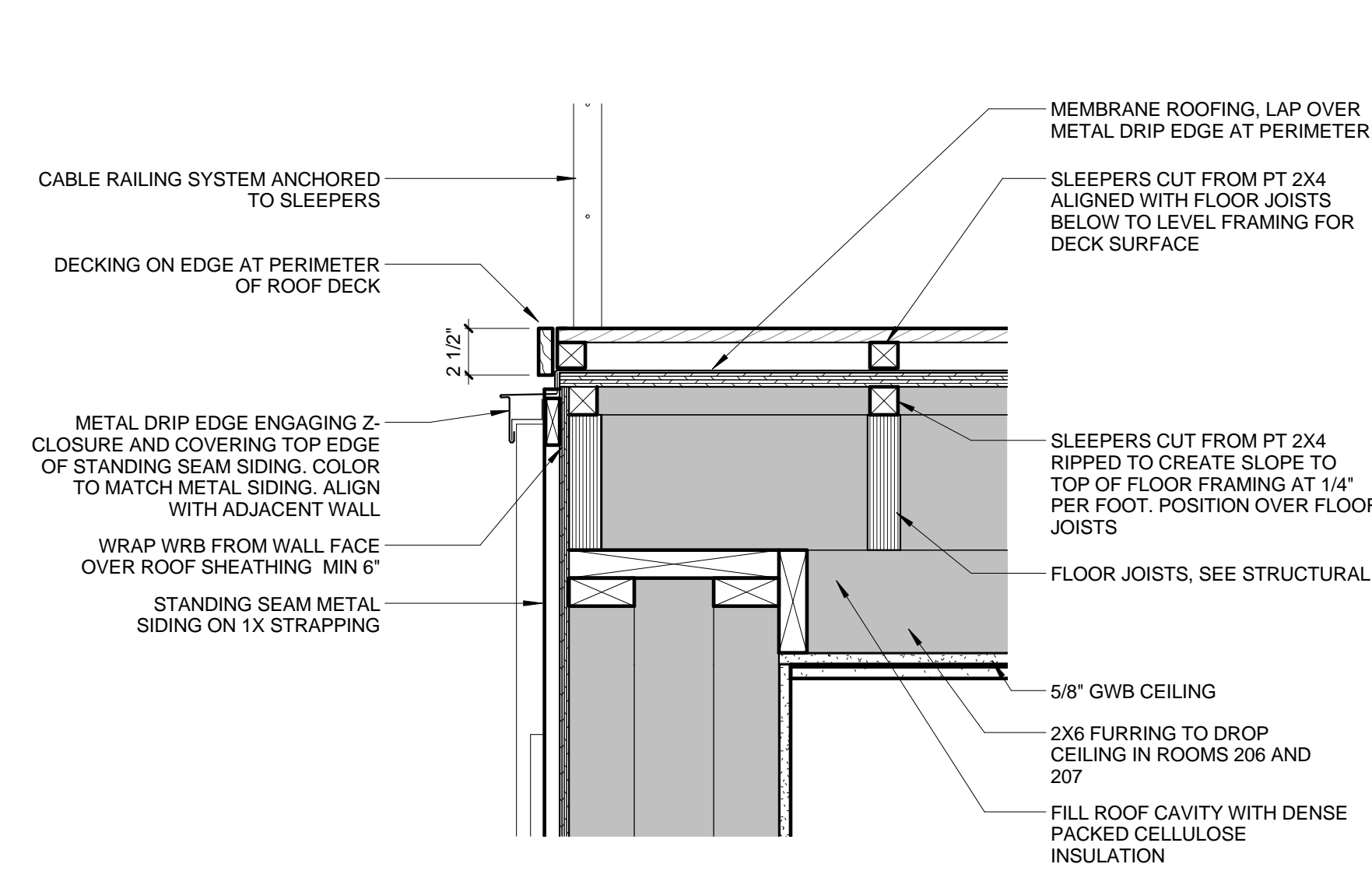


2 BUILDING SECTION - AT STAIR WELL
 1/4" = 1'-0"

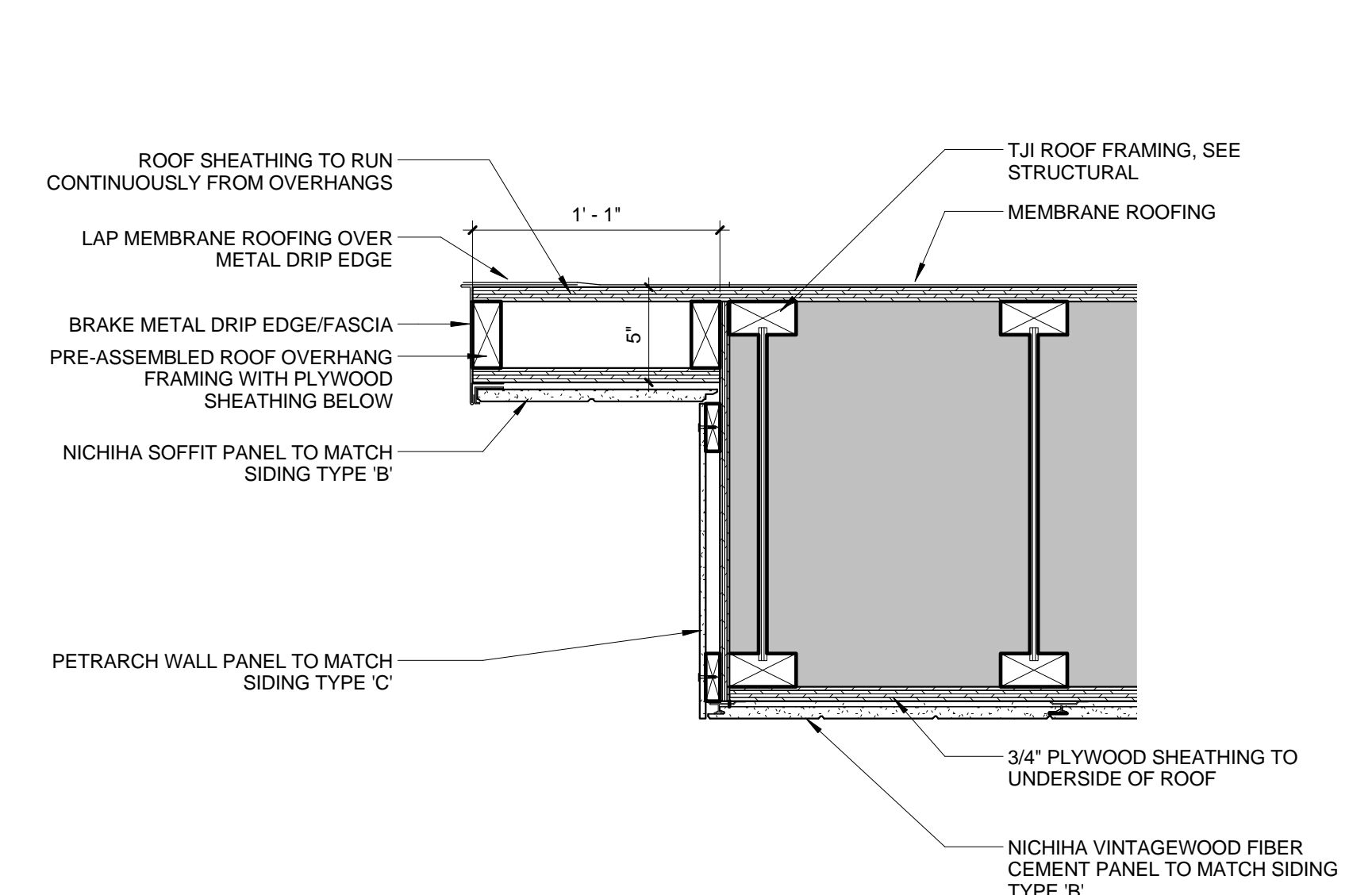
NOTES:
 FLOOR ELEVATION 0'-0" CORRESPONDS
 TO SURVEY ELEVATION 121'-0"



3 DETAIL - TERRACE FLOOR
 1 1/2" = 1'-0"



4 DETAIL - TERRACE EDGE
 1 1/2" = 1'-0"



5 DETAIL - RAKE AT TERRACE
 1 1/2" = 1'-0"