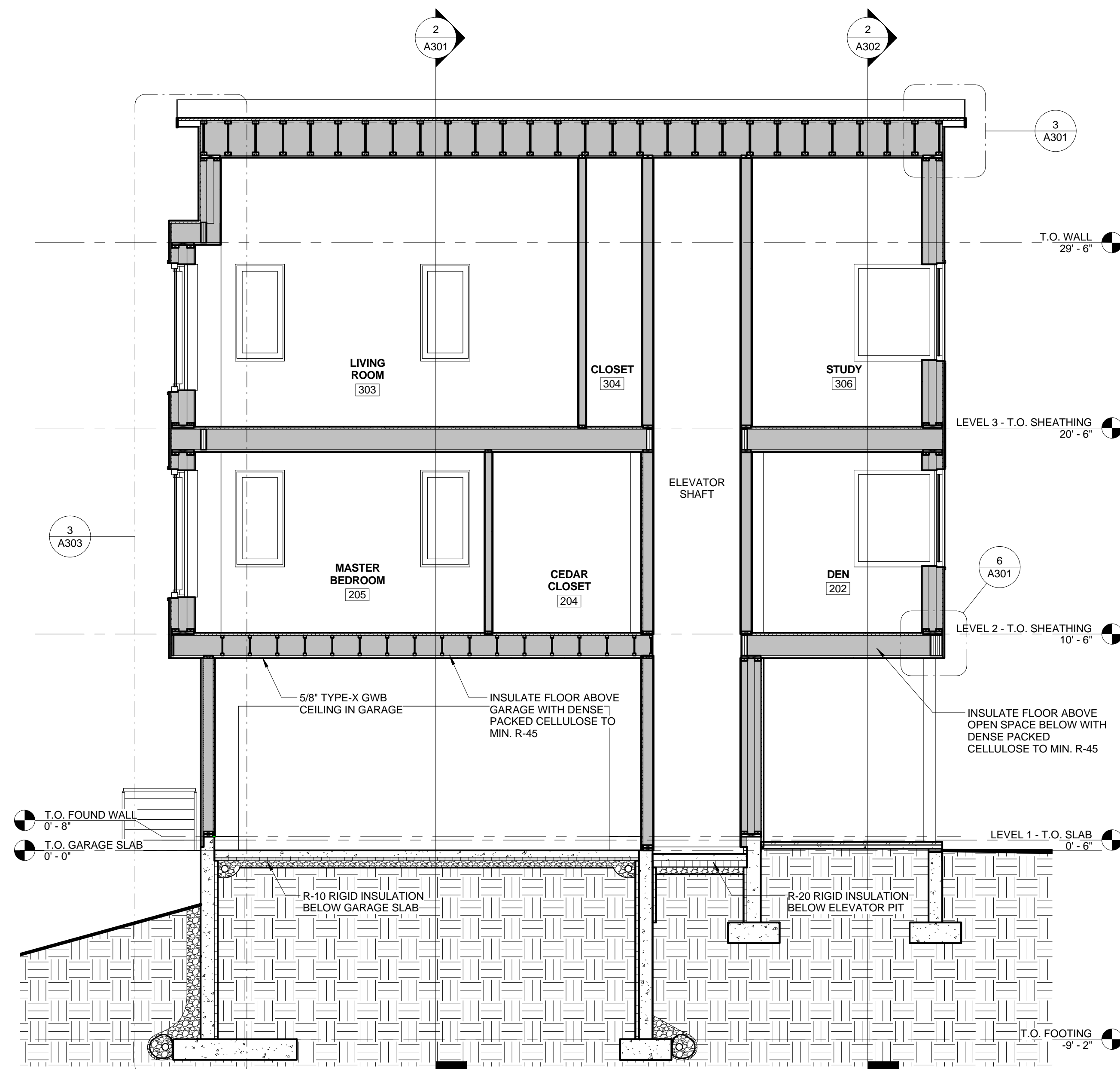
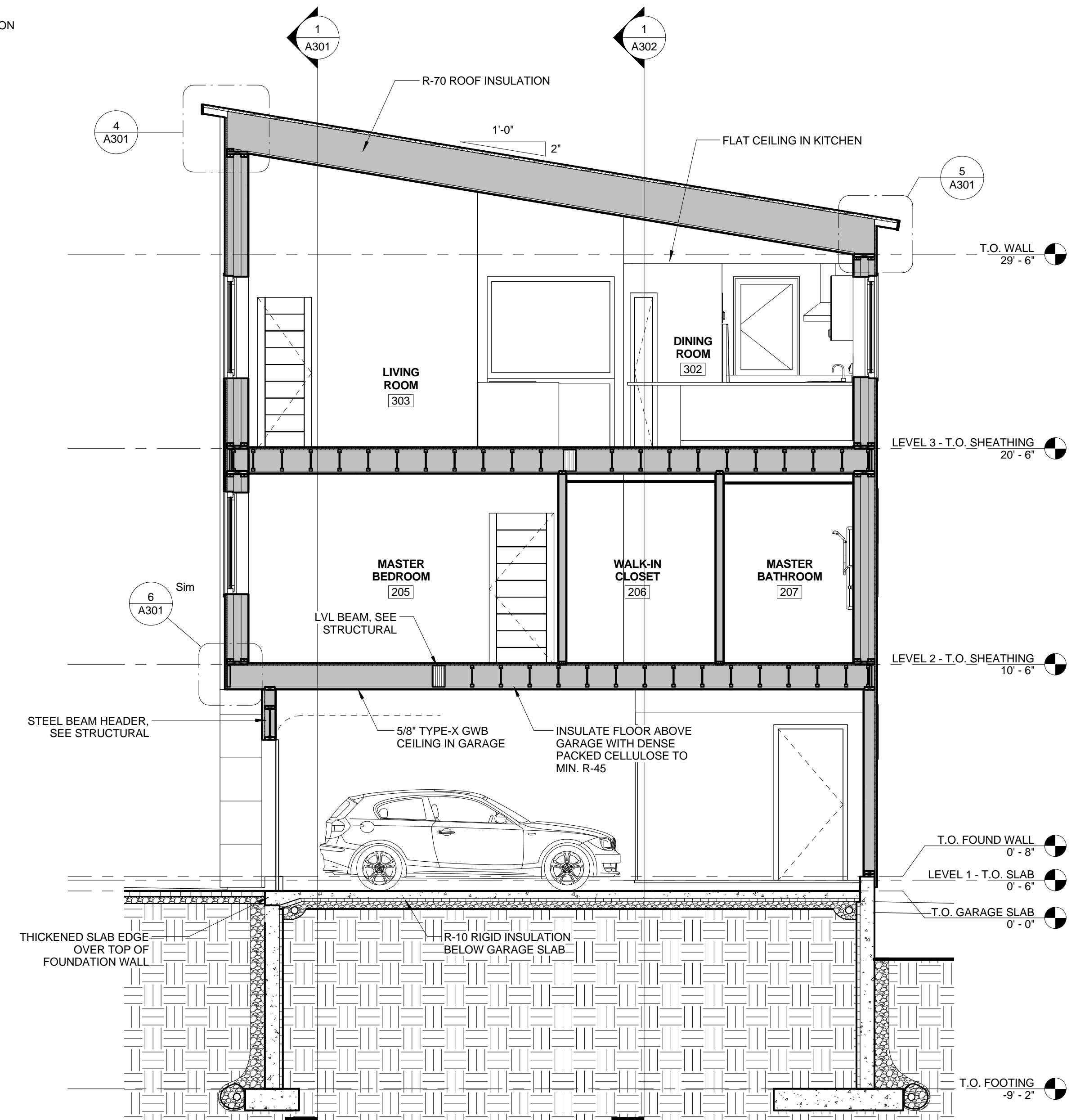


GENERAL NOTES:
 1. FLOOR ELEVATION 0'-0"
 CORRESPONDS TO SURVEY ELEVATION
 121'-0"

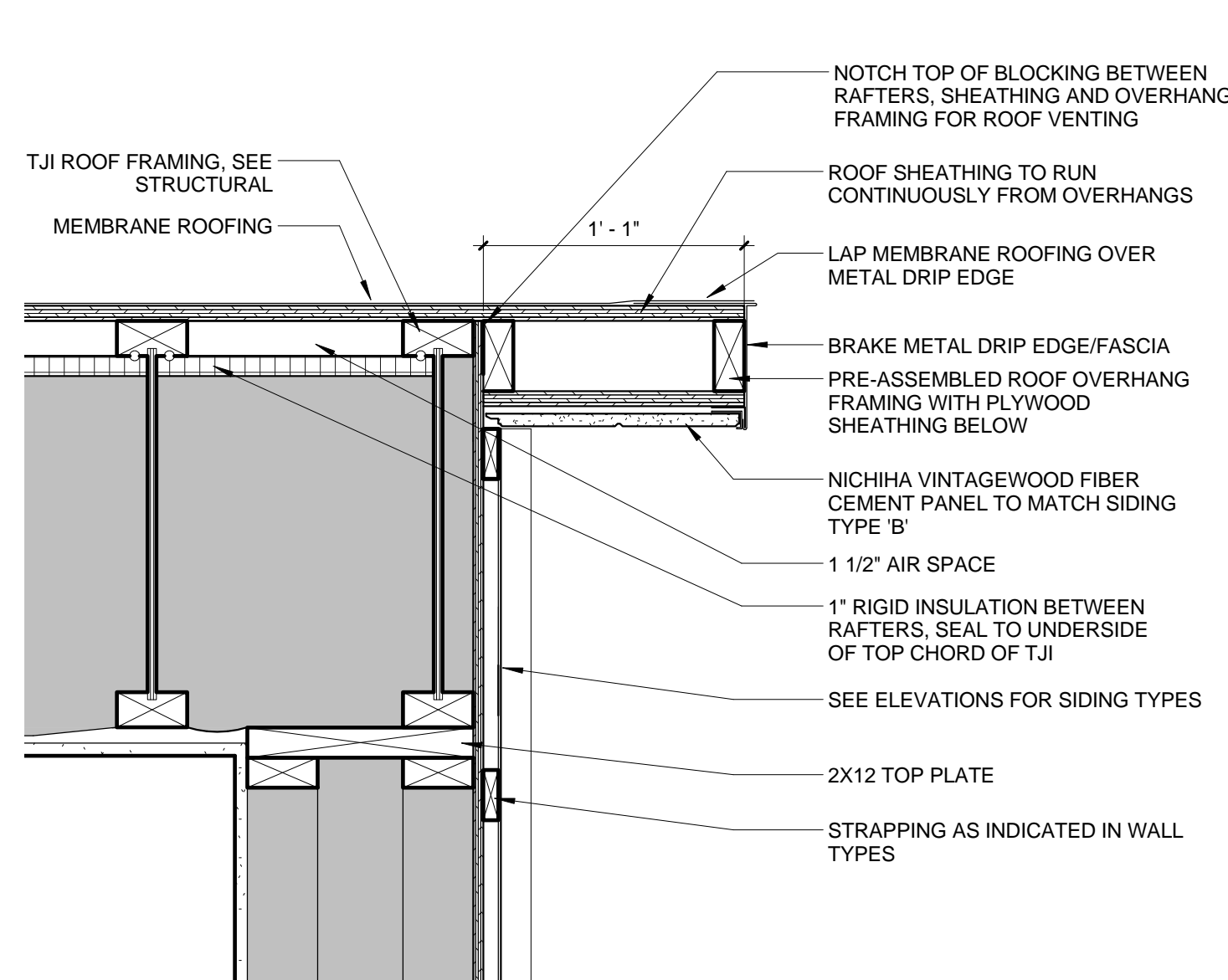


1 BUILDING SECTION - AT BAY WINDOW
 1/4" = 1'-0"

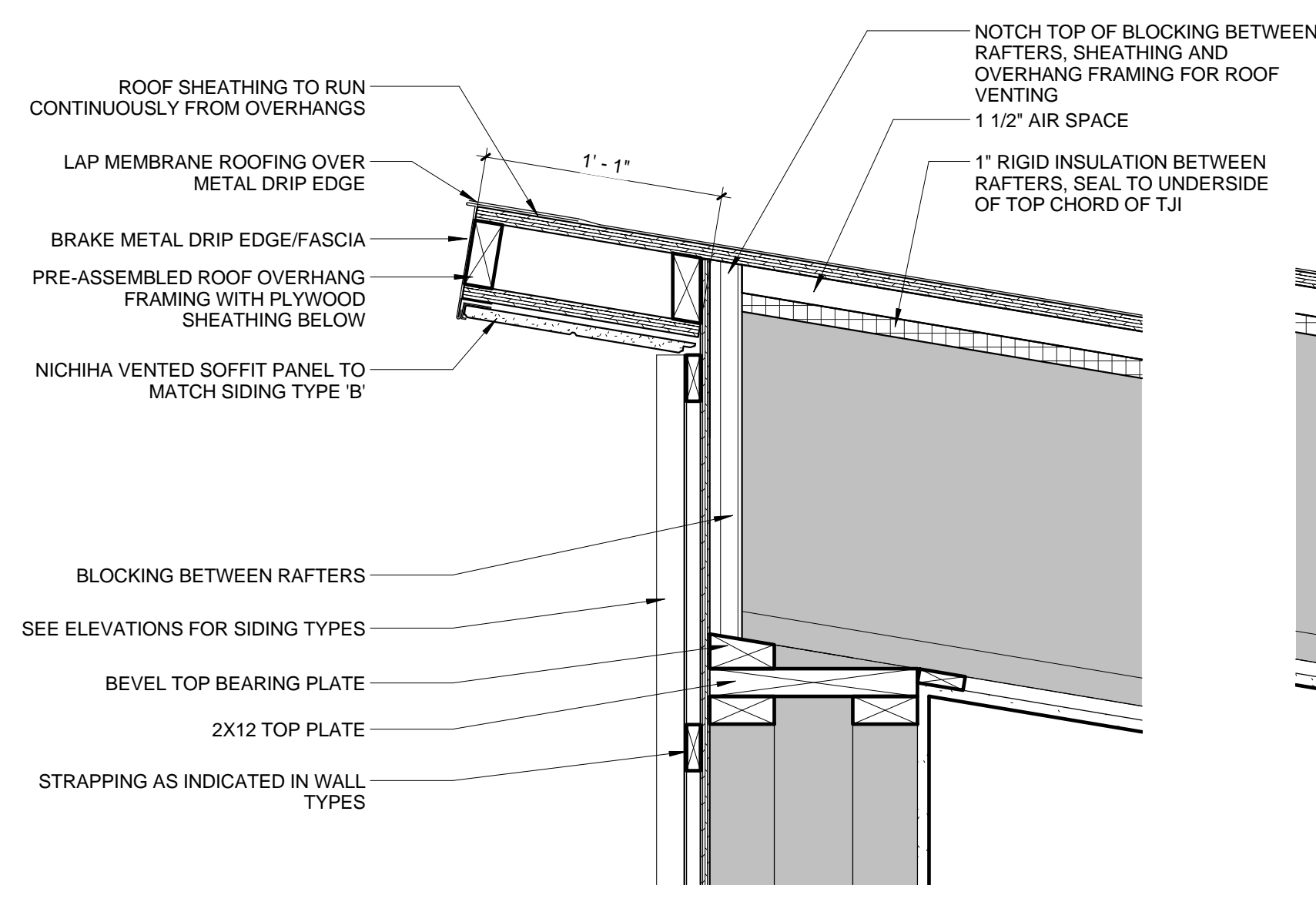


2 BUILDING SECTION - AT GARAGE
 1/4" = 1'-0"

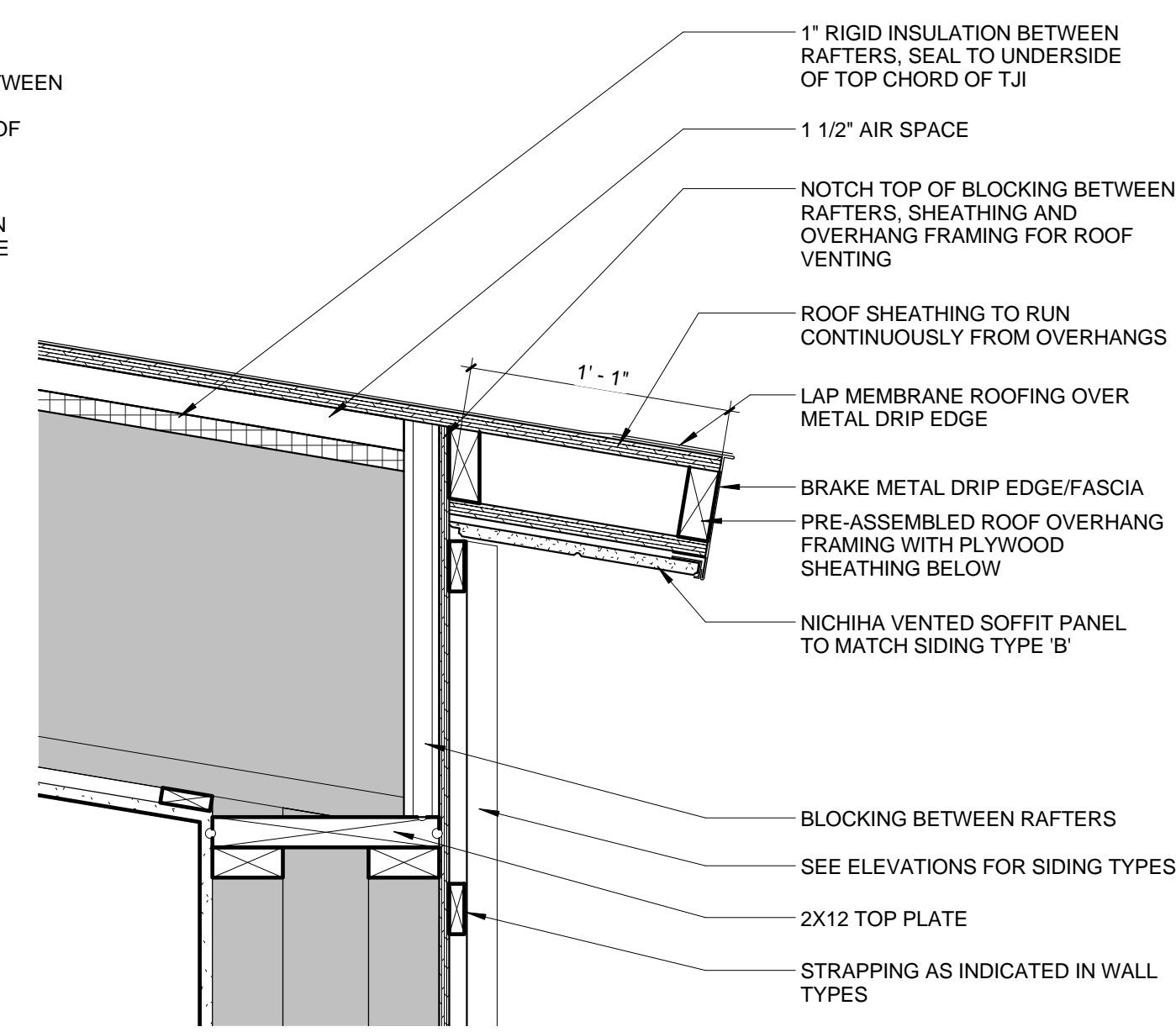
NOTES:
 FLOOR ELEVATION 0'-0" CORRESPONDS
 TO SURVEY ELEVATION 121'-0"



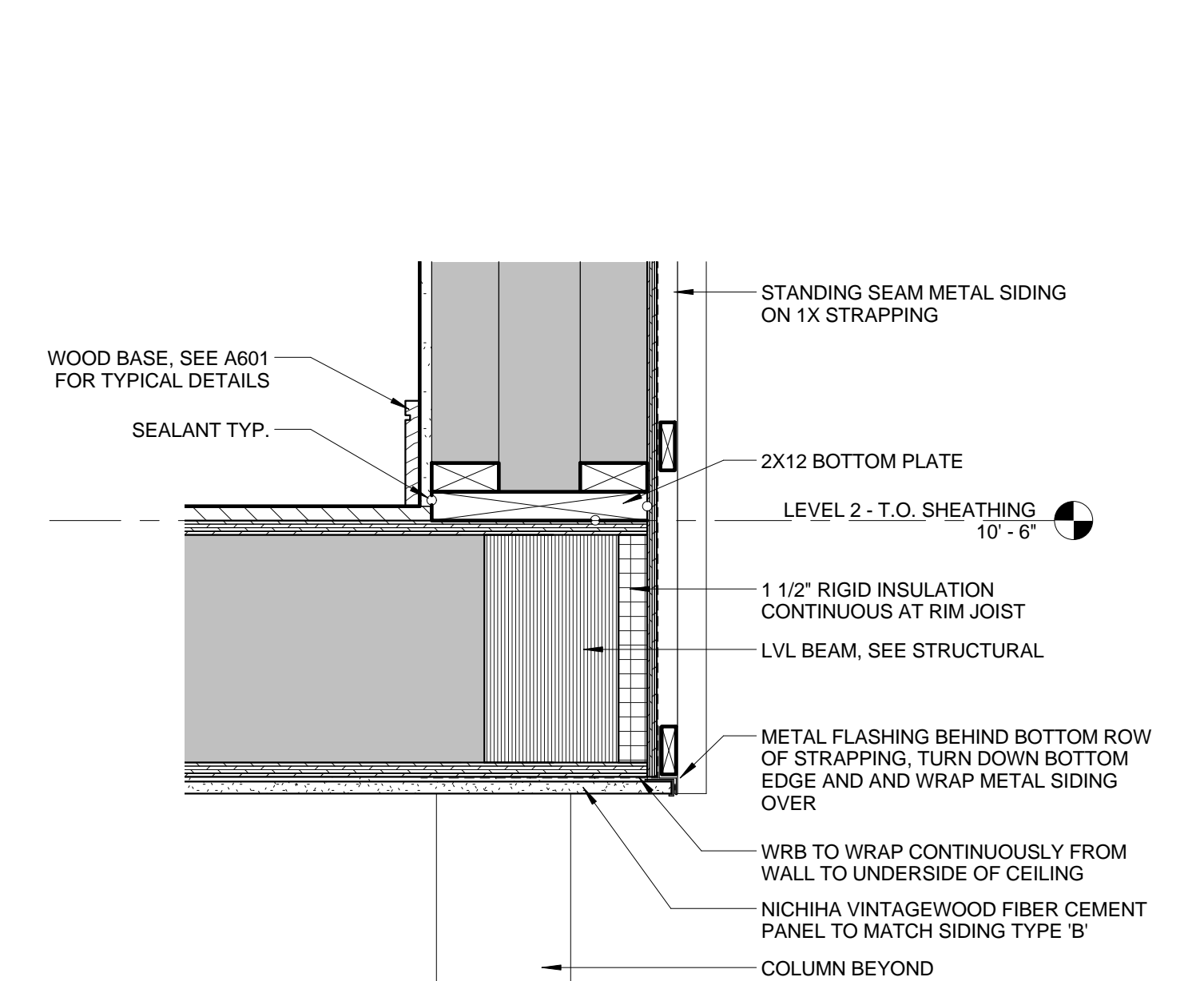
3 DETAIL - RAKE
 1 1/2" = 1'-0"



4 DETAIL - HIGH EAVE
 1 1/2" = 1'-0"



5 DETAIL - LOW EAVE
 1 1/2" = 1'-0"



6 DETAIL - 2ND FLOOR EDGE
 1 1/2" = 1'-0"