



BOGG + KIEFNER RESIDENCE
100 SHERIDAN STREET, PORTLAND, MAINE

BR BURN
architecture for life
20 Maple St Suite 202 Portland, ME 04101 207-774-6462

CONSULTANTS:

REVISIONS:

ISSUED: 09/30/14

PROJECT No: 1410

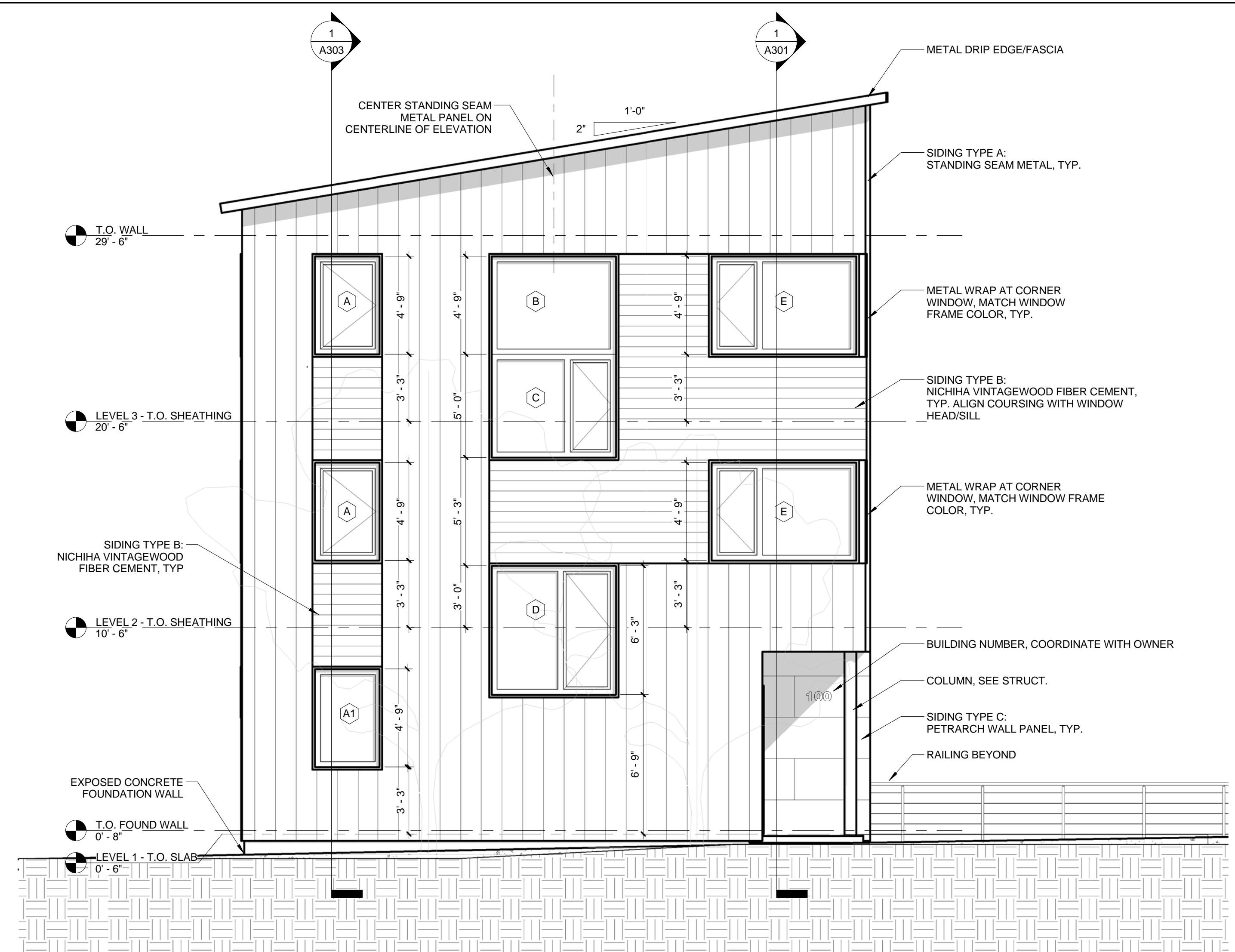
DRAWN BY: LB

CHECKED BY: HWH

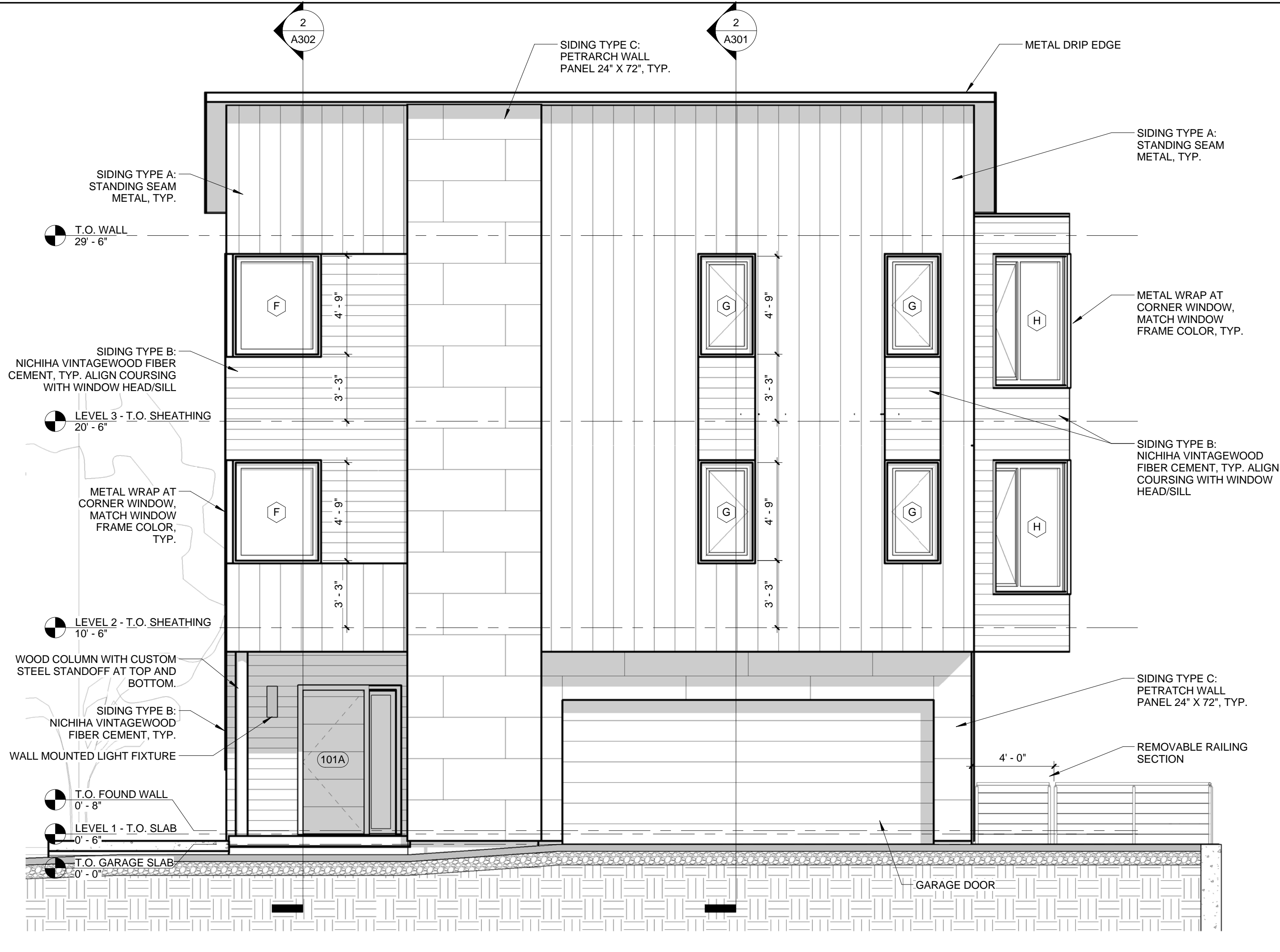
SHEET TITLE:

EXTERIOR ELEVATIONS

A201



2 EAST ELEVATION
1/4" = 1'-0"

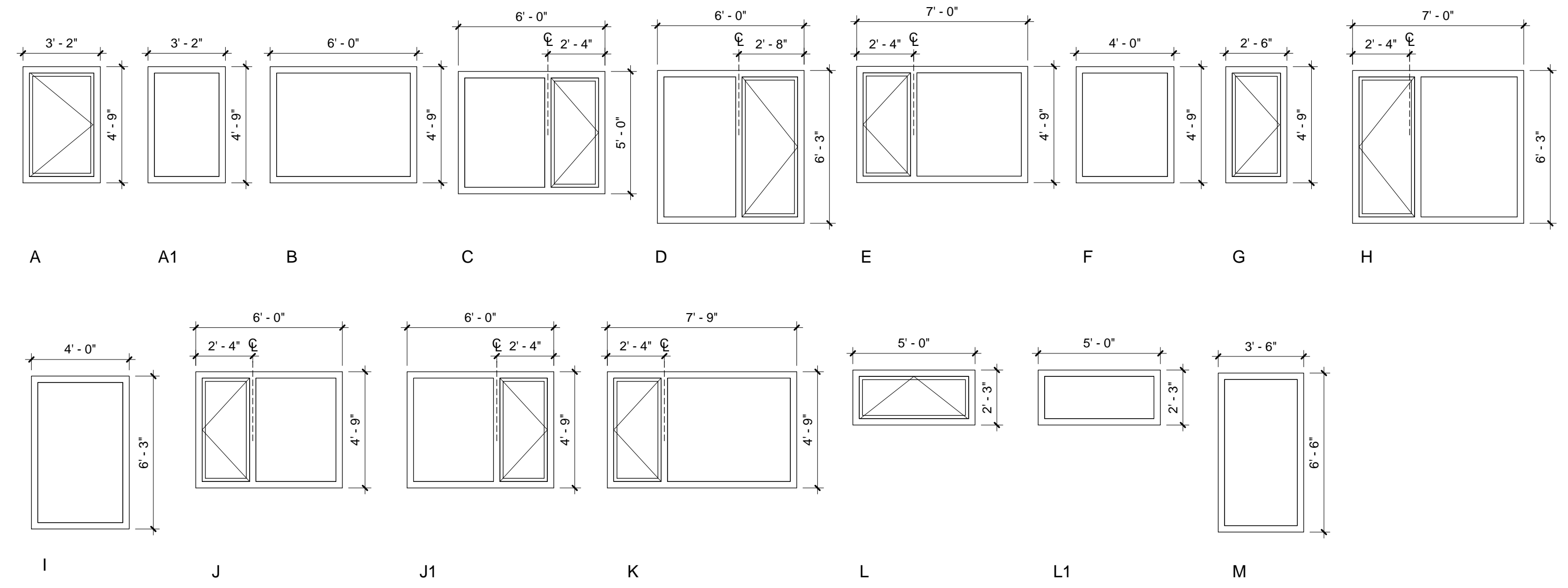


1 NORTH ELEVATION
1/4" = 1'-0"

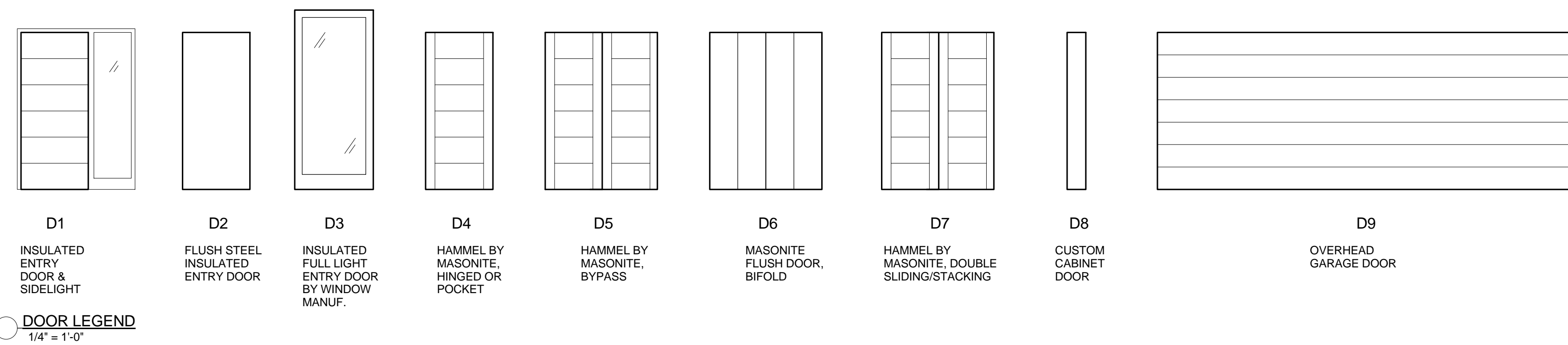
WINDOW SCHEDULE							
Type	Width	Height	Count	Operation	Notes	U-FACTOR	SHGC
A	3'-2"	4'-9"	5	CASEMENT	MEETS EGRESS REQUIREMENTS	0.18	0.39
A1	3'-2"	4'-9"	1	FIXED		0.17	0.47
B	6'-0"	4'-9"	1	FIXED		0.17	0.47
C	6'-0"	5'-0"	1	FIXED/CASEMENT	MEETS EGRESS REQUIREMENTS	0.17/0.18	0.46/0.39
D	6'-0"	6'-3"	1	FIXED/CASEMENT		0.17/0.46	0.46/0.39
E	7'-0"	4'-9"	2	CASEMENT/FIXED	MEETS EGRESS REQUIREMENTS	0.18/0.17	0.39/0.46
F	4'-0"	4'-9"	2	FIXED		0.17	0.47
G	2'-6"	4'-9"	4	CASEMENT	MEETS EGRESS REQUIREMENTS	0.18	0.39
H	7'-0"	6'-3"	2	CASEMENT/FIXED		0.18/0.17	0.39/0.46
I	4'-0"	6'-3"	2	FIXED		0.17	0.47
J	6'-0"	4'-9"	1	CASEMENT/FIXED	MEETS EGRESS REQUIREMENTS	0.18/0.17	0.39/0.46
J1	6'-0"	4'-9"	1	FIXED/CASEMENT	MEETS EGRESS REQUIREMENTS	0.17/0.18	0.46/0.39
K	7'-9"	4'-9"	1	CASEMENT/FIXED	MEETS EGRESS REQUIREMENTS	0.18/0.17	0.39/0.46
L	5'-0"	2'-3"	2	AWNING		0.18	0.39
L1	5'-0"	2'-3"	2	FIXED		0.17	0.47
M	3'-6"	6'-6"	2	FIXED		0.17	0.47
S	1'-6"	7'-0"	1	FIXED	ENTRY DOOR SIDELIGHT	0.18	0.39

- GENERAL NOTES:
1. WINDOWS BY KOHL-TECH
2. DARK BRONZE EXTERIOR COLOR, WHITE INTERIOR
3. ALL GLASS TO BE TEMPERED AS REQUIRE BY CODE
4. PROVIDE SCREENS ON ALL OPERABLE UNITS

DOOR SCHEDULE						
Mark	Type	Width	Height	Operation	Hardware	Comments
101A	D1	3'-0"	7'-0"	EXTERIOR SWING		
101B	D4	3'-0"	7'-0"	SWING		
101C	D2	3'-0"	7'-0"	SWING		PAINT TO MATCH WALL COLOR
102A	D9	18'-0"	7'-0"	OVERHEAD GARAGE		
102B	D2	3'-0"	7'-0"	SWING		
102C	D2	3'-0"	7'-0"	SWING		
103	D4	2'-6"	7'-0"	SWING		
104	D5	5'-0"	7'-0"	TWO PANEL BYPASS		
202A	D4	3'-0"	7'-0"	SWING		
202B	D4	2'-6"	7'-0"	POCKET		
203	D4	3'-0"	7'-0"	POCKET		
204	D4	3'-0"	7'-0"	POCKET		
205	D4	3'-0"	7'-0"	POCKET		
207	D4	3'-0"	7'-0"	POCKET		
208A	D4	3'-0"	7'-0"	POCKET		
208B	D4	2'-6"	7'-0"	SWING		
209	D4	3'-0"	7'-0"	POCKET		
210	D5	5'-0"	7'-0"	BIFOLD		
300	D8	0'-10"	7'-0"	SWING		
301	D4	2'-6"	7'-0"	POCKET		
302	D3	3'-6"	8'-0"	EXTERIOR SWING		
304	D4	2'-6"	7'-0"	POCKET		
305	D4	2'-6"	7'-0"	POCKET		
306A	D4	3'-0"	7'-0"	SWING		
306B	D7	5'-3"	7'-0"	DOUBLE SLIDING/STACKING		



WINDOW LEGEND
1/4" = 1'-0"



DOOR LEGEND
1/4" = 1'-0"

NOTES:
FLOOR ELEVATION 0'-0" CORRESPONDS TO SURVEY ELEVATION 121'-0"