



BOGG + KIEFNER RESIDENCE
100 SHERIDAN STREET, PORTLAND, MAINE

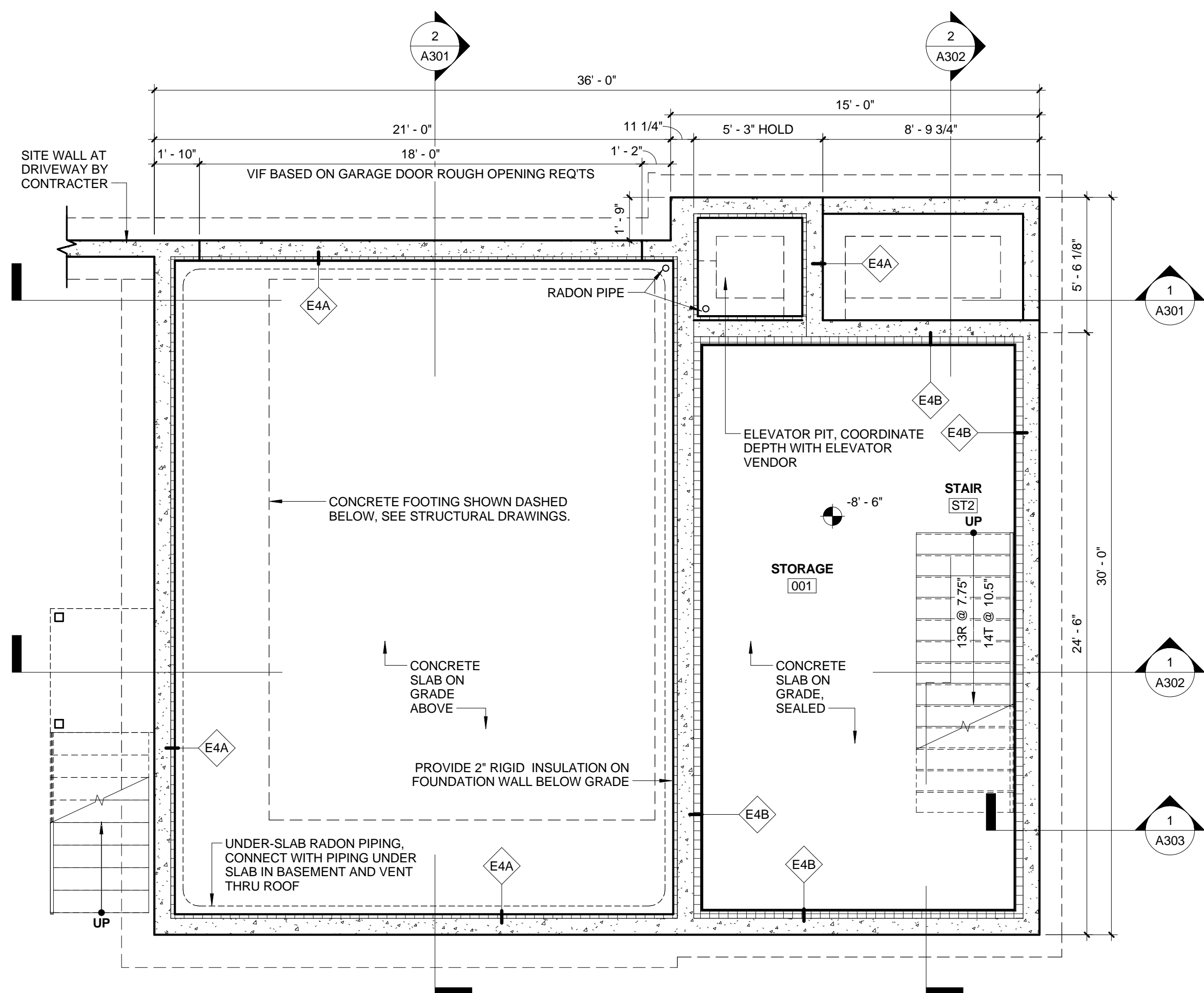
BR BURN
architecture for life
20 Maple St Suite 201 Portland, ME 04101 (207) 774-6462

CONSULTANTS:

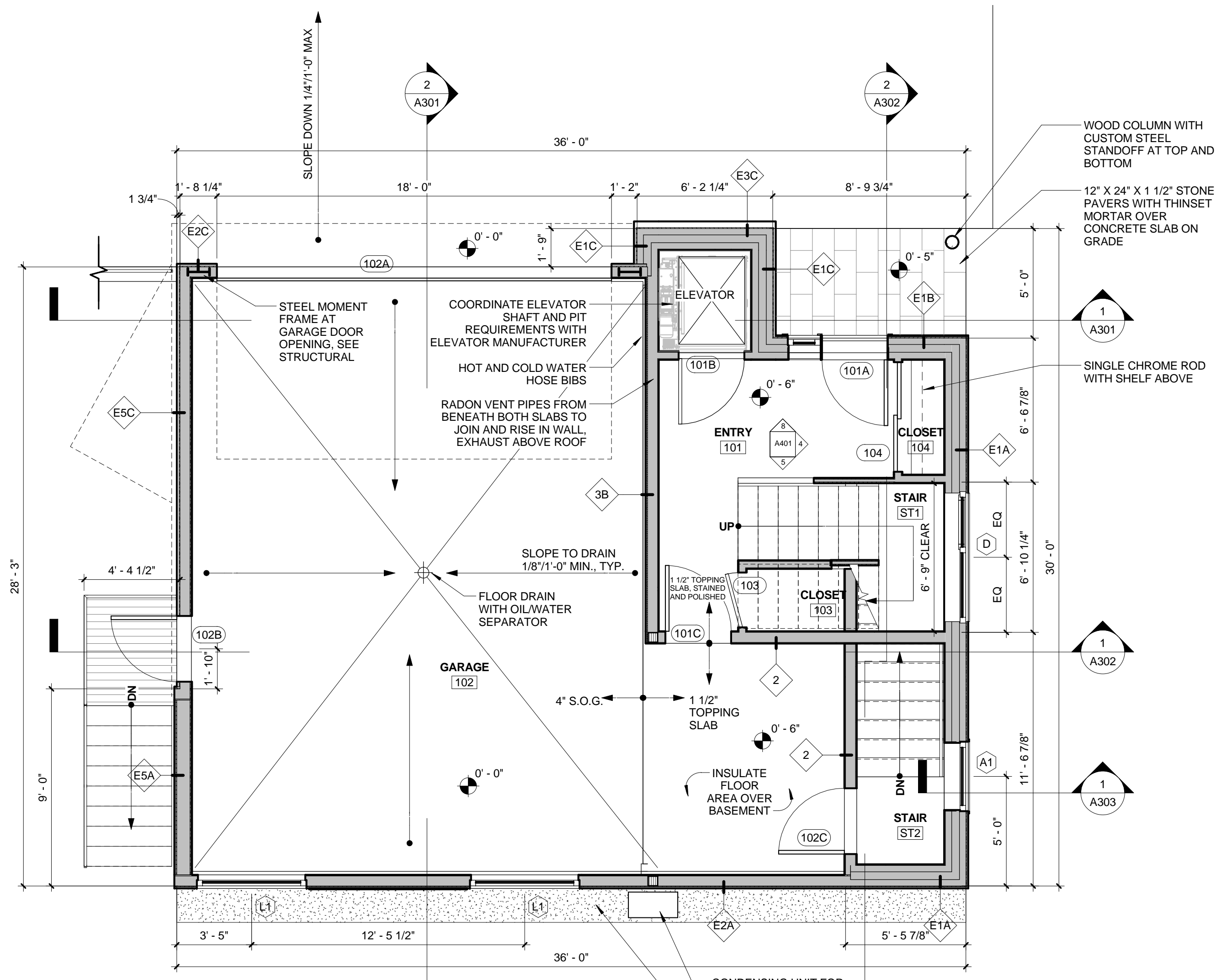
REVISIONS:

ISSUED: 09/30/14
PROJECT No: 1410
DRAWN BY: LB
CHECKED BY: HWH
SHEET TITLE:
FLOOR PLANS

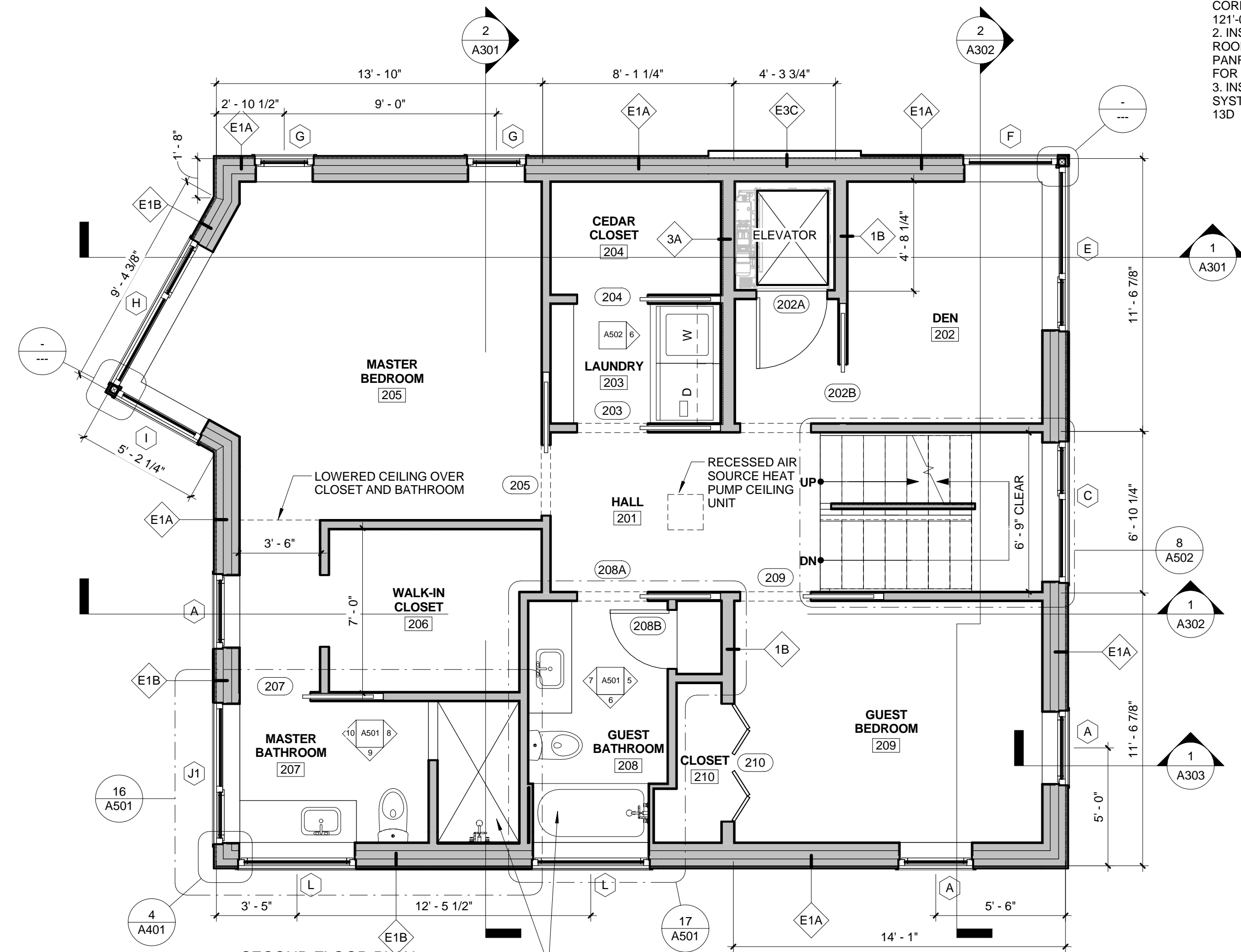
A101



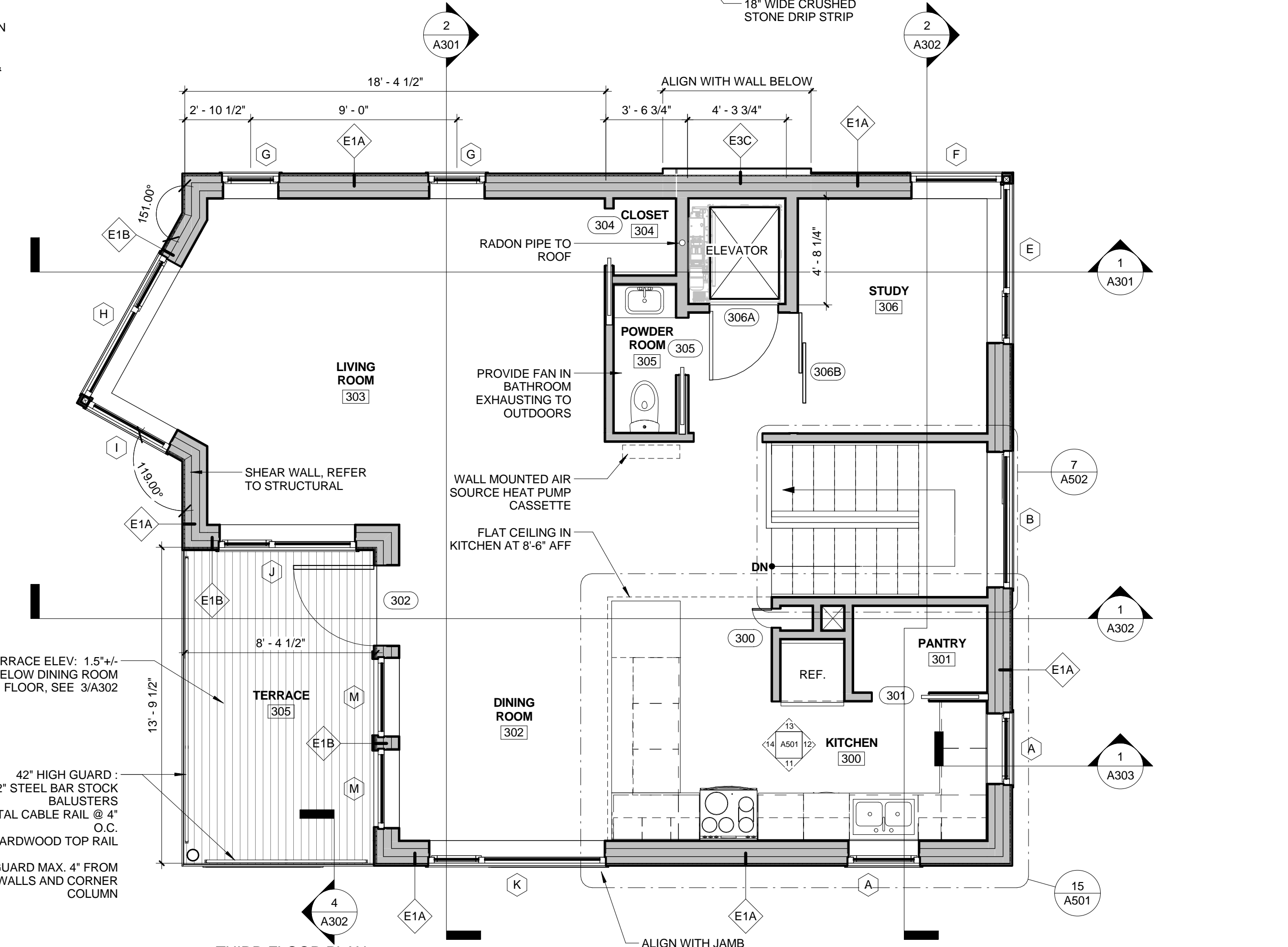
1. BASEMENT PLAN
1/4" = 1'-0"



2. FIRST FLOOR PLAN
1/4" = 1'-0"



3. SECOND FLOOR PLAN
1/4" = 1'-0"



4. THIRD FLOOR PLAN
1/4" = 1'-0"

GENERAL NOTES:
1. FLOOR ELEVATION 0'-0" CORRESPONDS TO SURVEY ELEVATION 121'-0"
2. INSTALL FLAT CEILING IN POWDER ROOM 305, CLOSET 304, KITCHEN 300 & PANTRY 301. SEE FINISH SCHEDULE FOR FINISHES
3. INSTALL RESIDENTIAL SPRINKLER SYSTEM IN COMPLIANCE WITH NFPA 13D

PROVIDE FANS IN BATHROOMS EXHAUSTING TO OUTDOORS. COORDINATE LOCATION ON EXTERIOR OF BUILDING WITH ARCHITECT