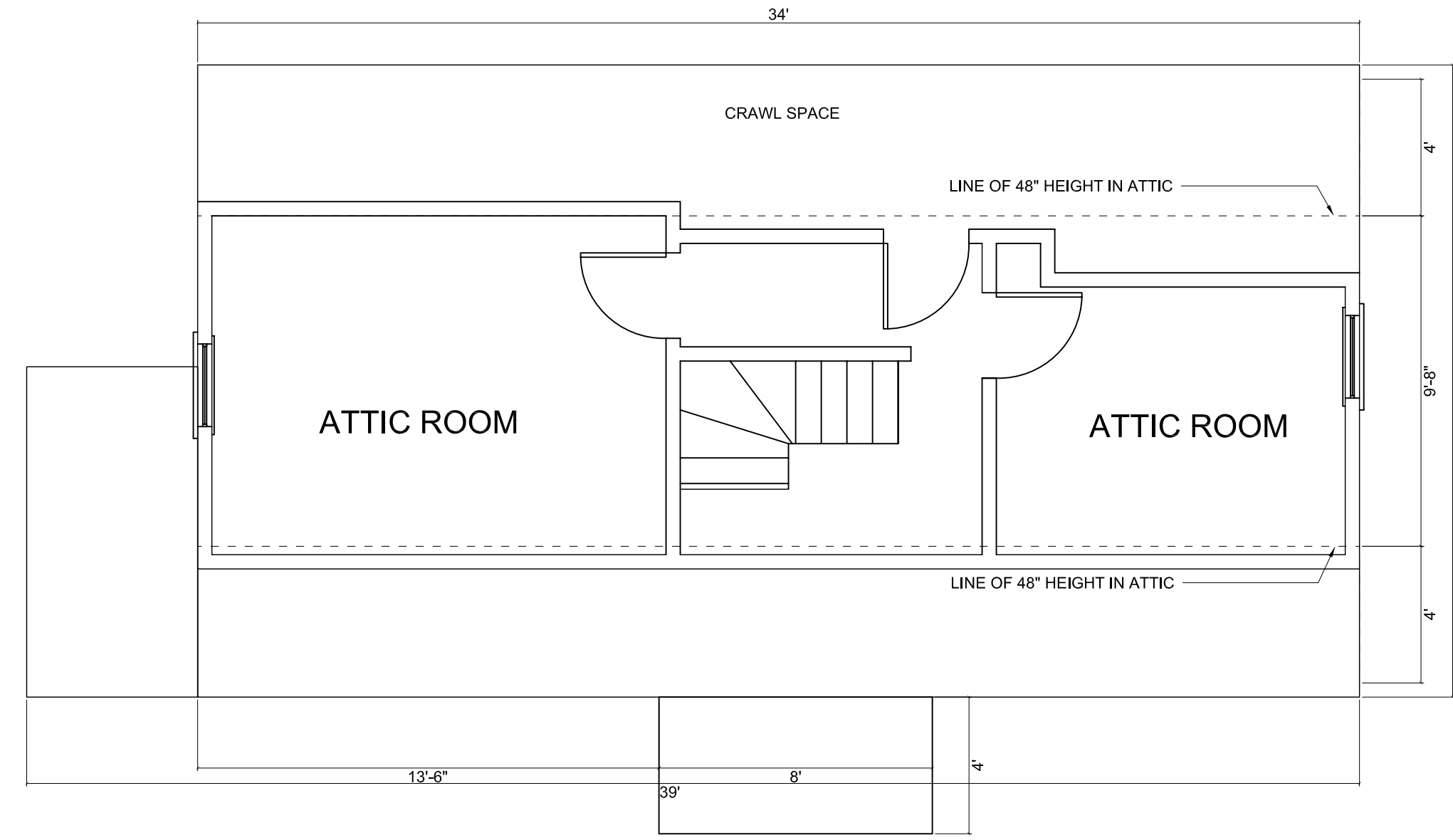
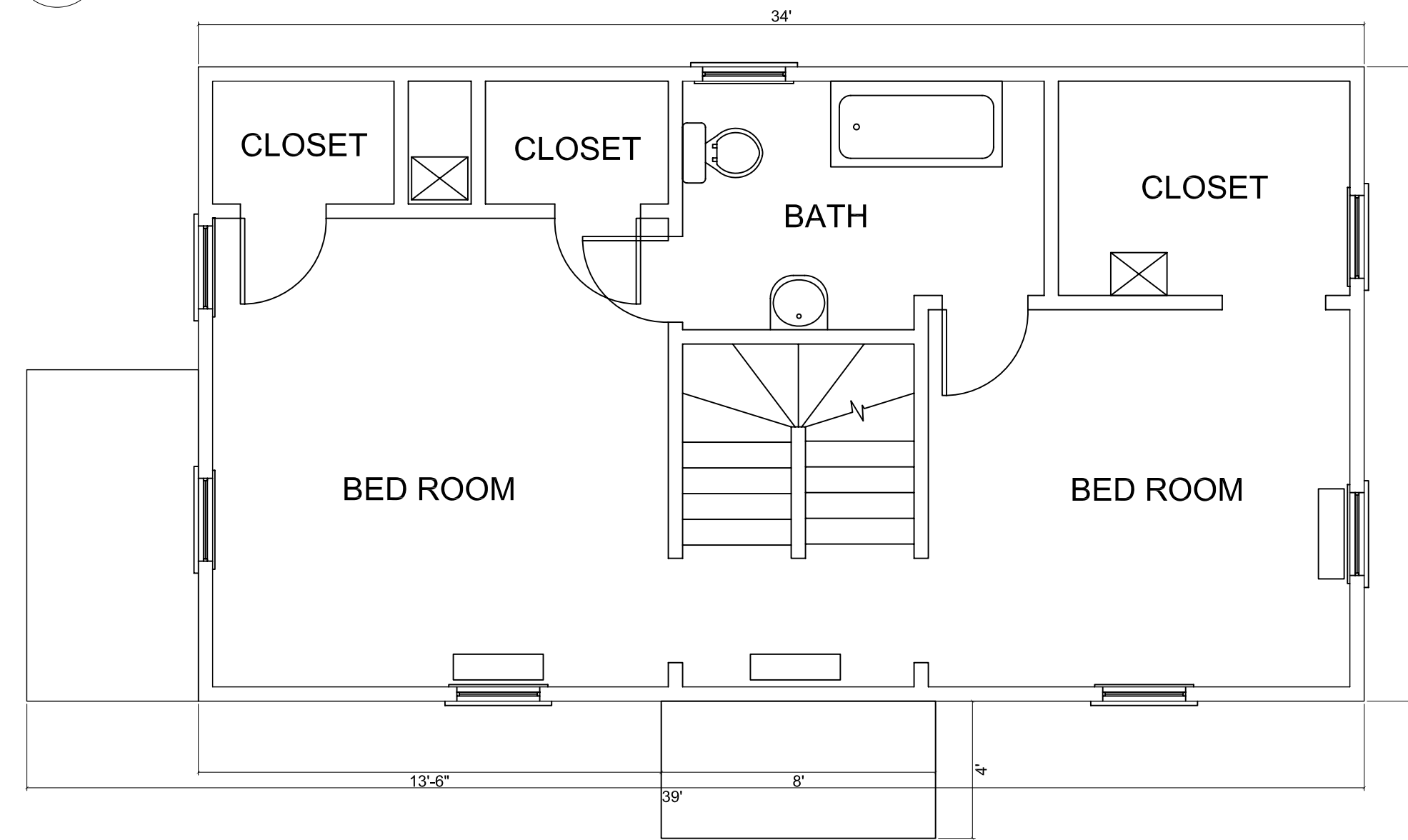


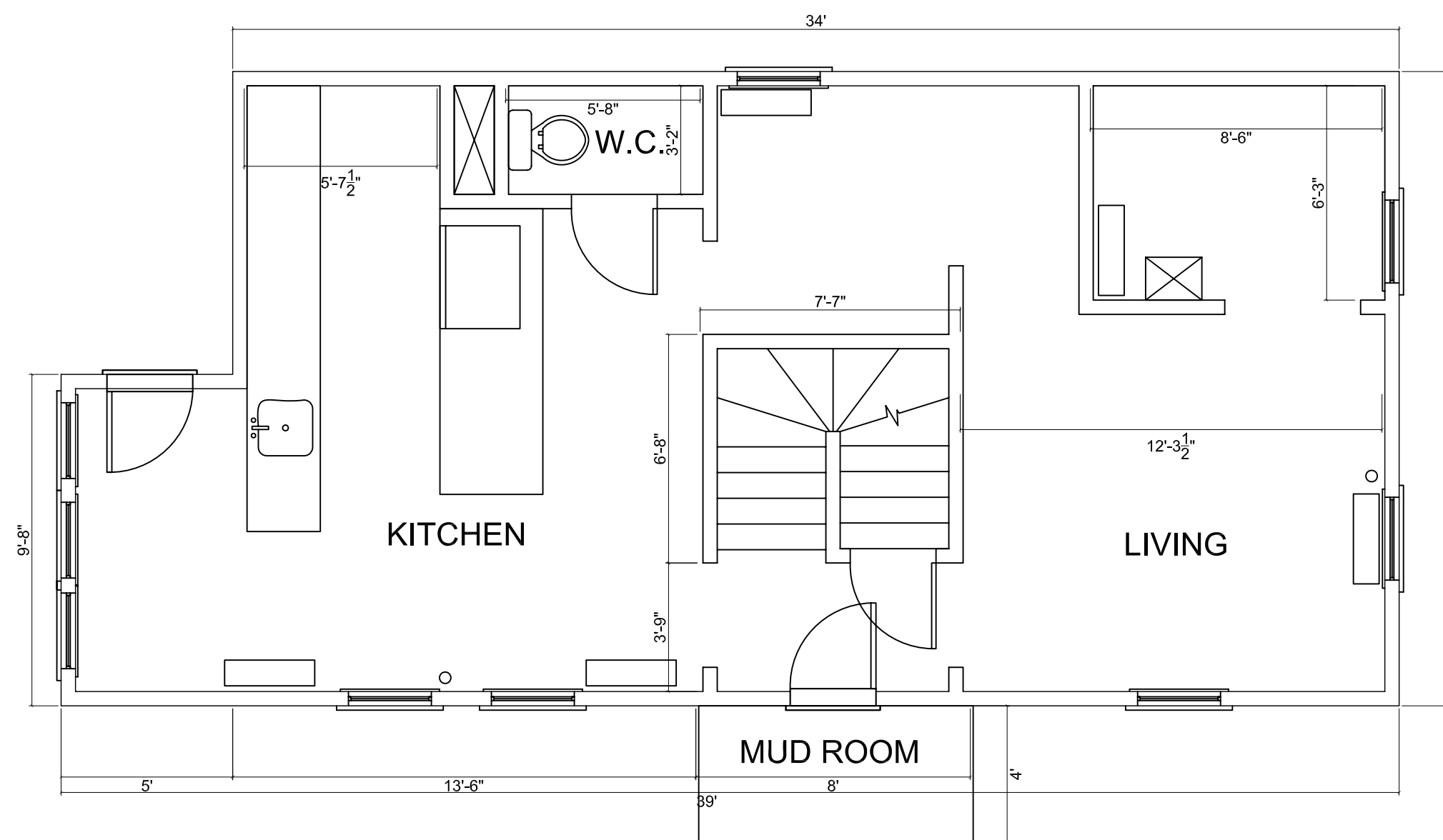
**116 SHERIDAN STREET
 PORTLAND, MAINE 04101
 BLOCK: J, LOT: 10**



3 EXISTING THIRD FLOOR PLAN
 scale: 1/4"=1'-0"

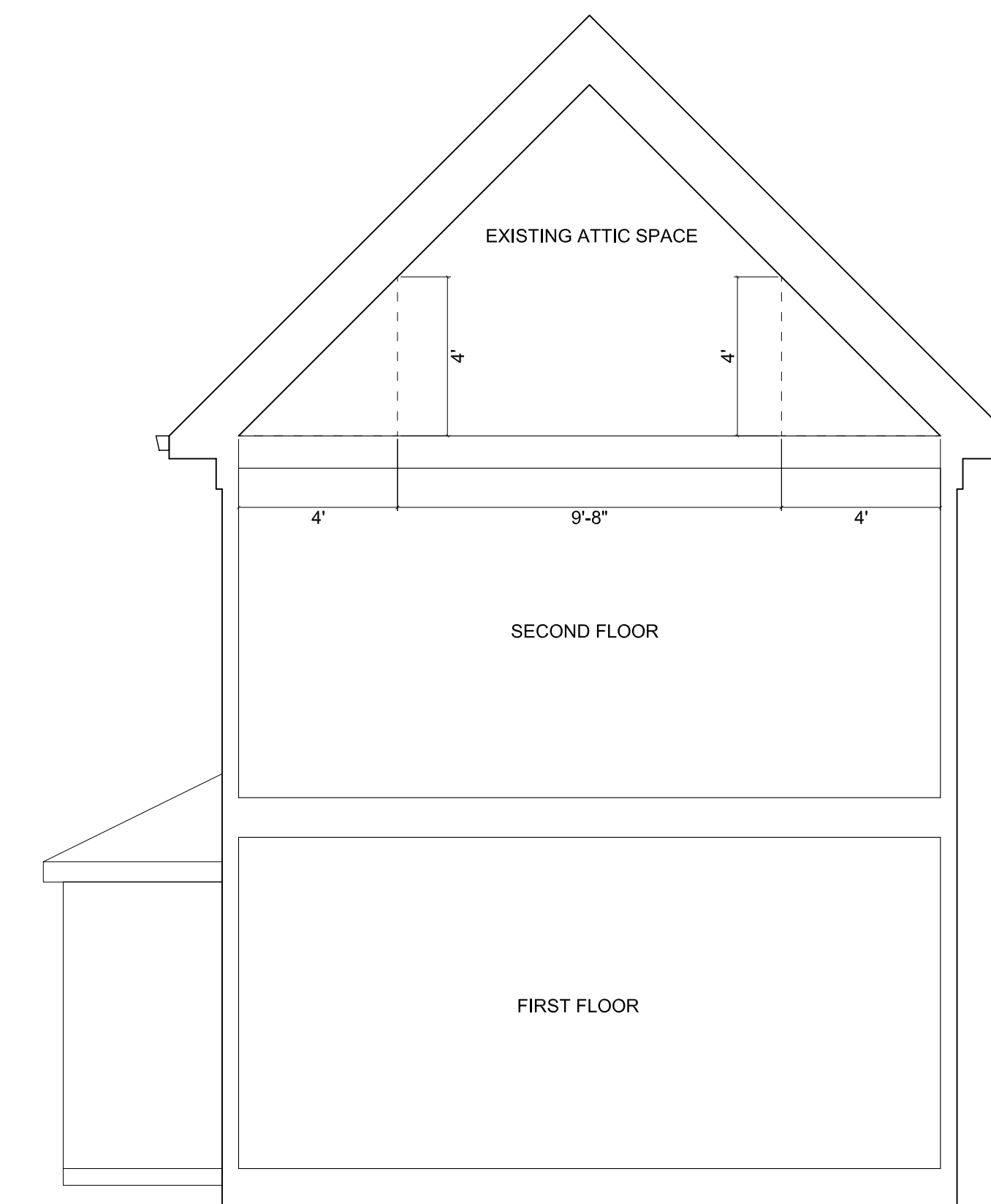


2 EXISTING SECOND FLOOR PLAN
 scale: 1/4"=1'-0"

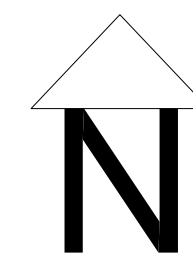


1 EXISTING GROUND FLOOR PLAN
 scale: 1/4"=1'-0"

TOTAL EXISTING ATTIC SQ. FTG:
 329 SQ. FT.
 (OCCUPIABLE STARTING AT 48" HEIGHT)



1 EXISTING SECTION
 scale: 1/4"=1'-0"



SUBMITTAL : ZONING SUBMITTAL
 DATE : 070717

SHEET:
EXISTING FLOOR PLANS

1

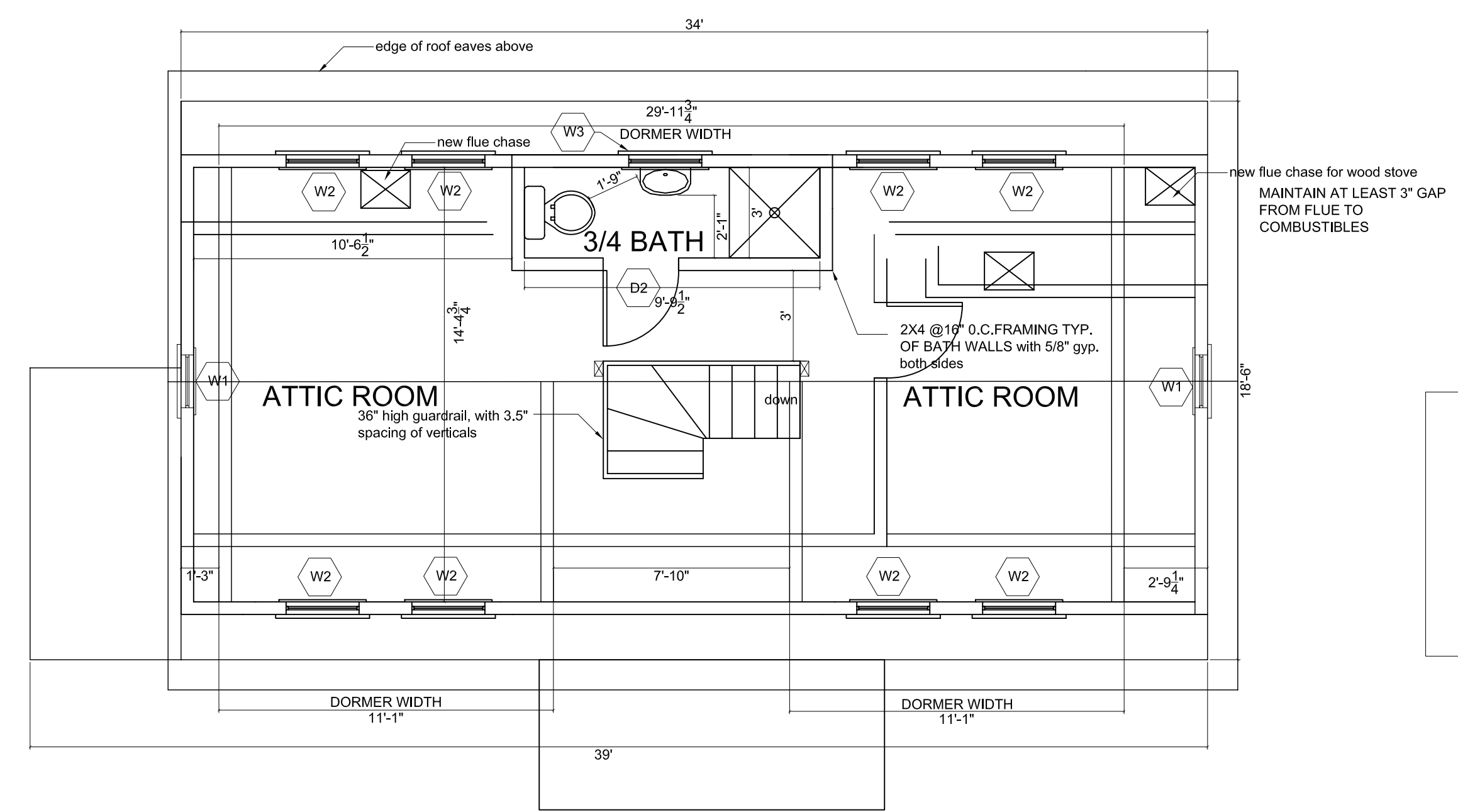


**116 SHERIDAN STREET
PORTLAND, MAINE 04101
BLOCK: J, LOT: 10**

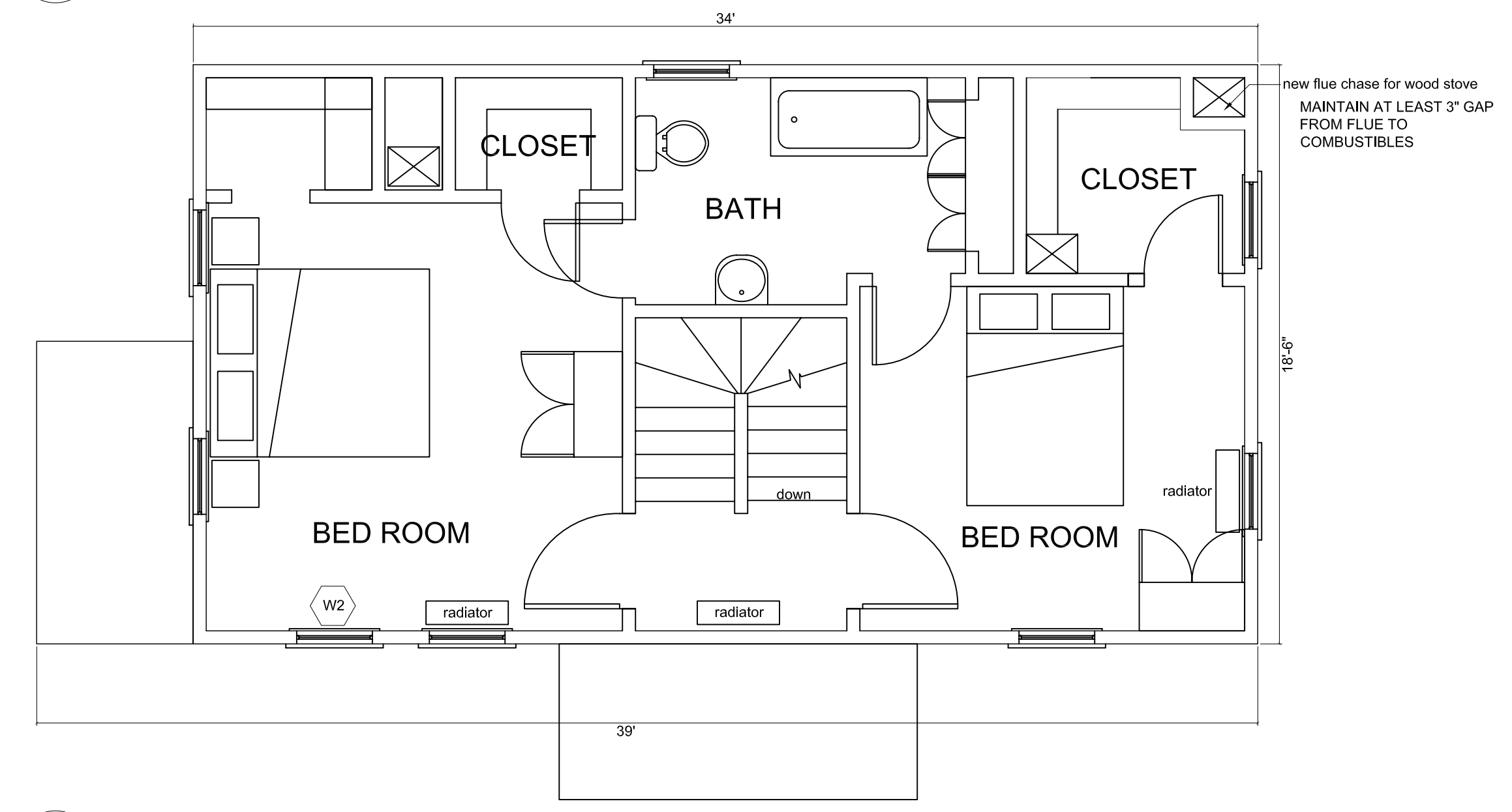
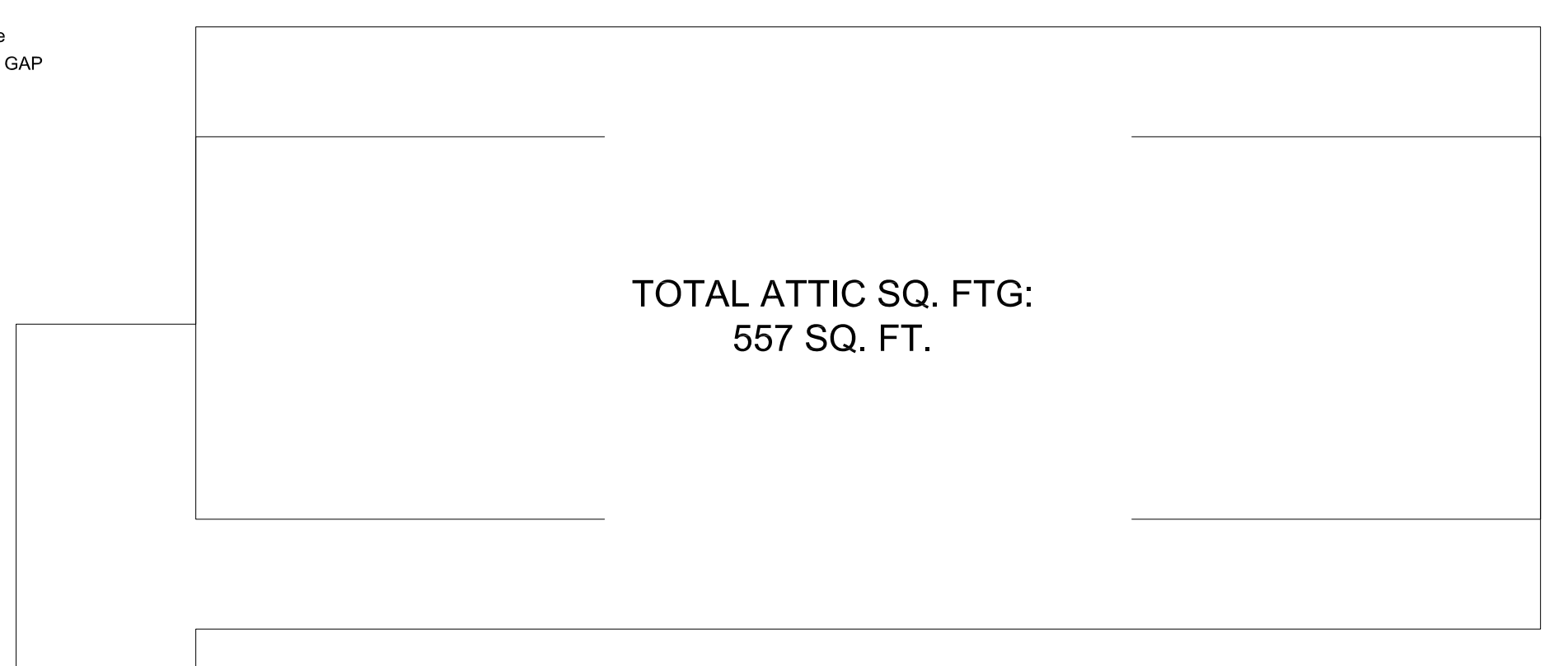
SUBMITTAL : DATE :
ZONING SUBMITTAL 070717

SHEET:
**PROPOSED
FLOOR
PLANS**

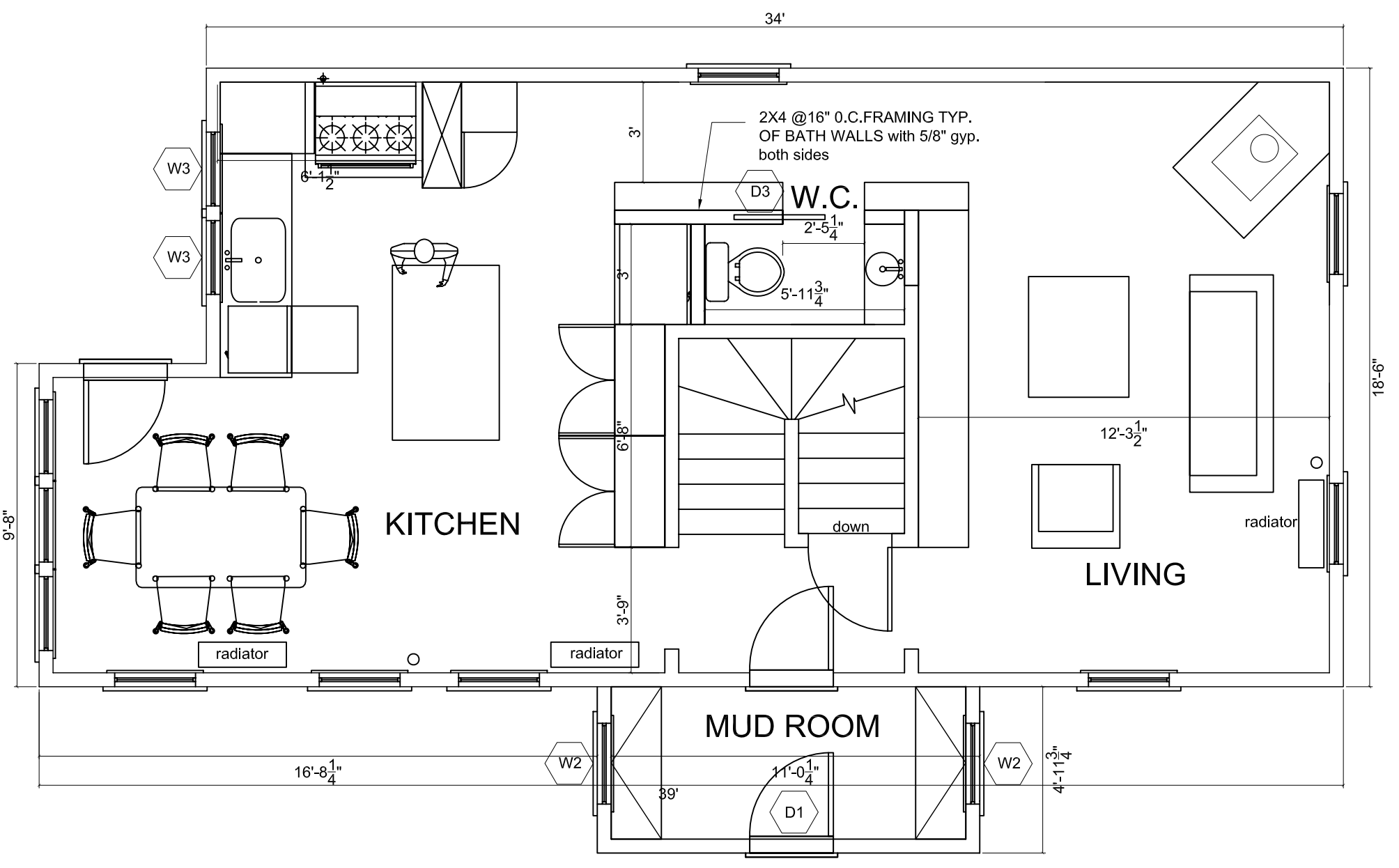
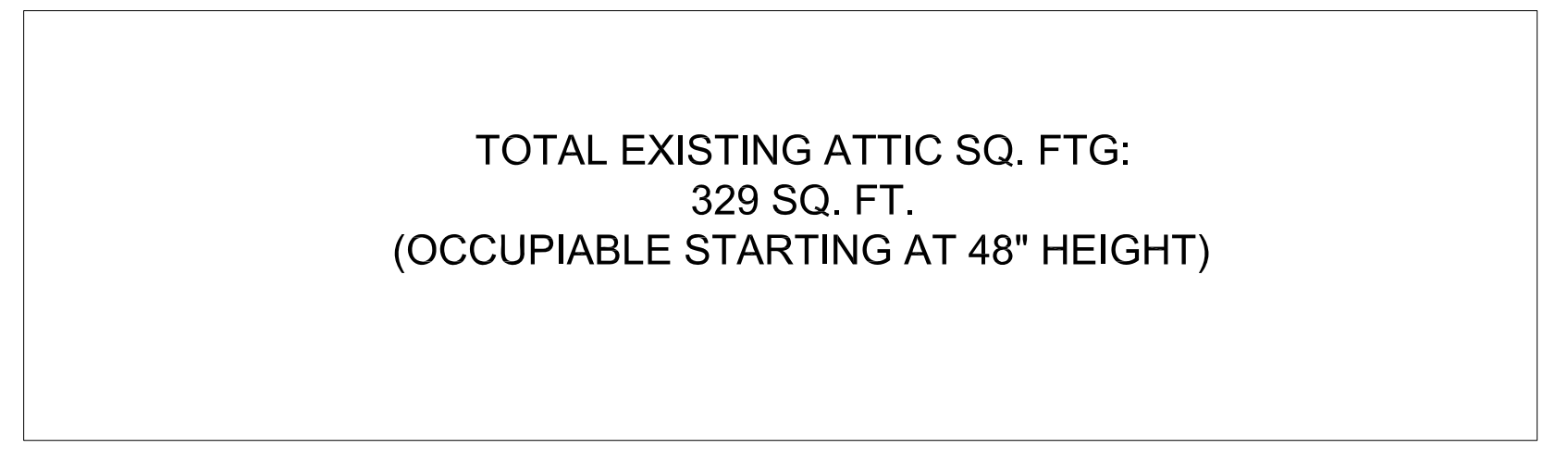
2



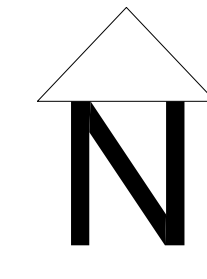
3 PROPOSED THIRD FLOOR PLAN
scale: 1/4"=1'-0"



2 PROPOSED SECOND FLOOR PLAN
scale: 1/4"=1'-0"

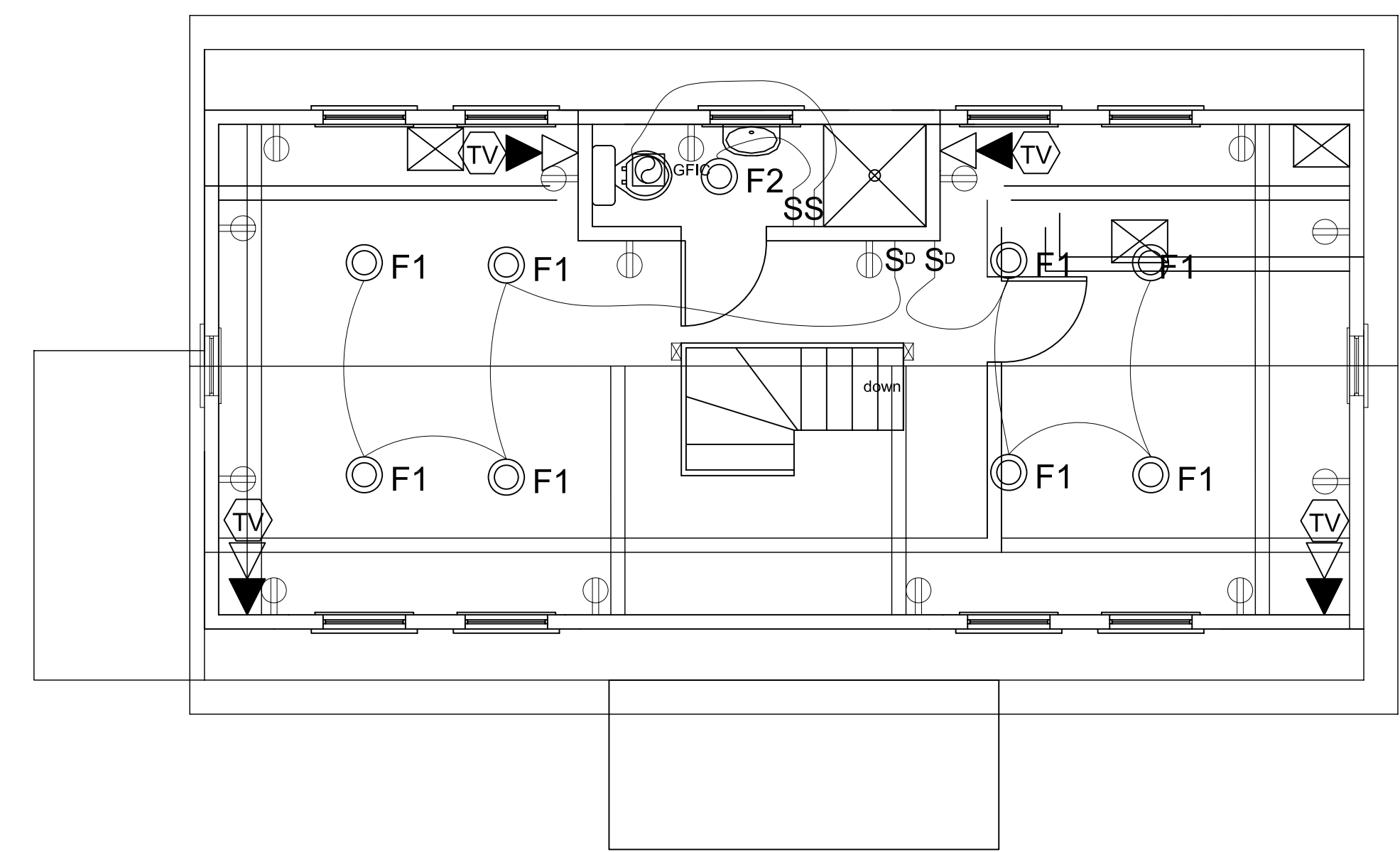


1 PROPOSED GROUND FLOOR PLAN
scale: 1/4"=1'-0"

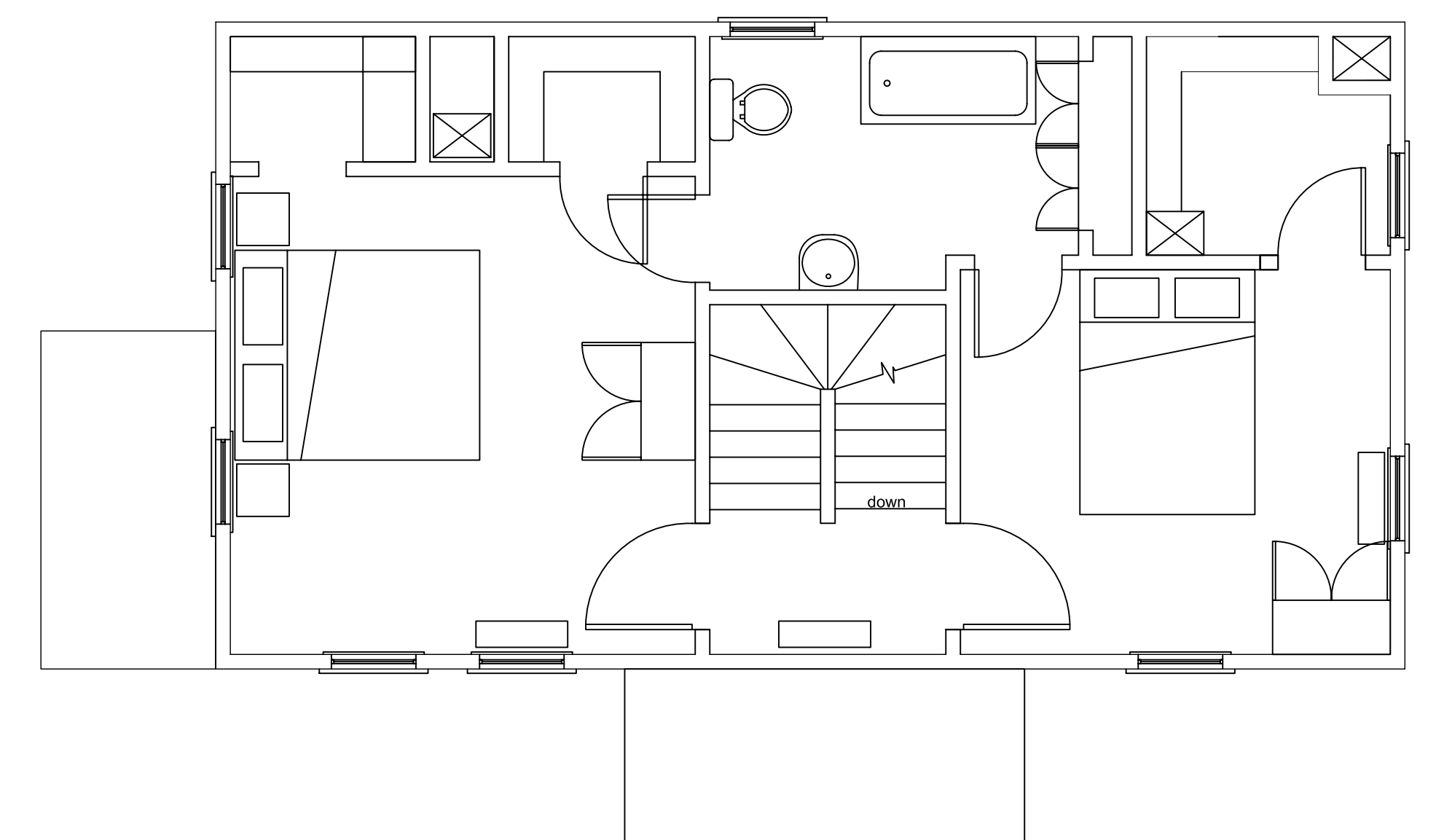




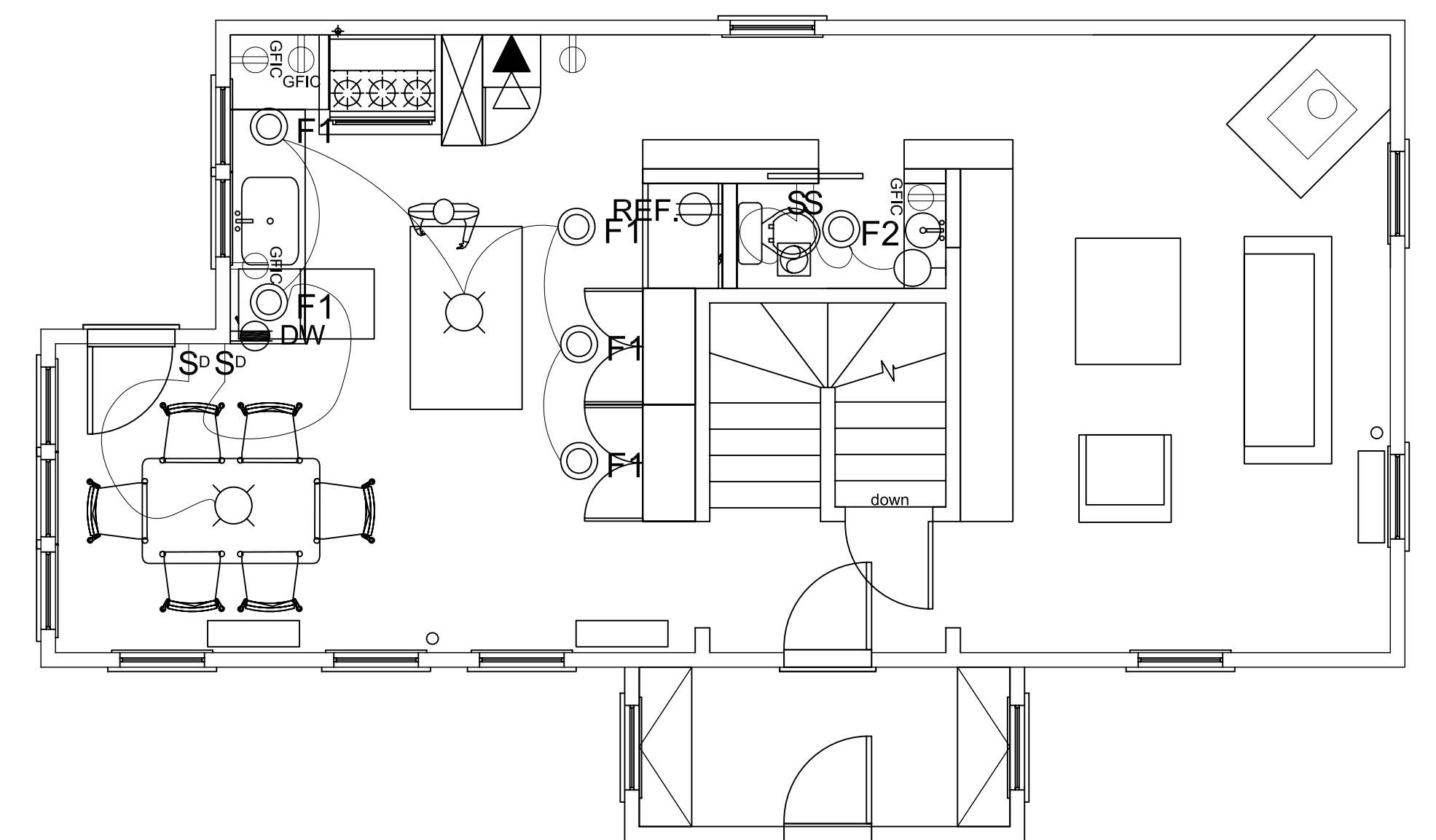
**116 SHERIDAN STREET
PORTLAND, MAINE 04101
BLOCK: J, LOT: 10**



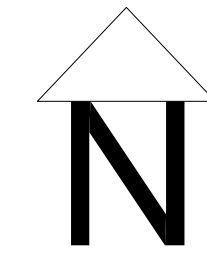
3 PROPOSED THIRD FLOOR LIGHTING/ELECTRICAL
scale: 1/4"=1'-0"



2 SECOND FLOOR PLAN(NO WORK)
scale: 1/4"=1'-0"



1 PROPOSED GROUND FLOOR LIGHTING/ ELECTRICAL
scale: 1/4"=1'-0"



POWER, SIGNAL LEGEND

- ⊕ RECEPTACLE, DUPLEX
 - ⊕ RECEPTACLE, QUAD DUPLEX
 - ⊕ RECEPTACLE, DUPLEX, GFCI
 - ⊕ WP WATERPROOF RECEPTACLE, DUPLEX, GFCI; GASKET COVER
 - ⊕ S RECEPTACLE: 220V
 - ⊕ H RANGE HOOD RECEPTACLE
 - ⊕ REF. REFRIGERATOR RECEPTACLE
 - ⊕ DW DISH WASHER: WATERPROOF RECEPTACLE, DUPLEX, GFCI
 - ⊕ M RECEPTACLE, MICROWAVE
 - ▽ TELEPHONE
 - ▽ COMMUNICATION LINE: CATEGORY 5 CABLE
 - ⊕ TV CABLE TV
 - ⊕ GARBAGE DISPOSAL
 - ⊕ THERMOSTAT, MOUNTED AT 42" A.F.F. U.O.N.
 - ⊕ SMOKE DETECTOR - 110 VOLTS INTERCONNECTED W/ BATTERY BACKUP PER CBC 310.9.1.3
 - ⊕ DOOR CHIME
 - ⊕ DOOR CHIME BUTTON MOUNTED @ 38" A.F.F.
 - ⊕ NON-REMOVABLE HOSEBIB WITH BACKFLOW PREVENTION DEVICE
 - ⊕ GAS SUPPLY
 - ⊕ FAN
 - ⊕ SWITCH, MOUNTED @ 42" A.F.F. U.O.N.
 - ⊕ 3-WAY SWITCH, MOUNTED @ 42" A.F.F. U.O.N.
 - ⊕ SWITCH W/ DIMMER, MOUNTED @ 42" A.F.F. U.O.N.
 - ⊕ SWITCH W/ MOTION DETECTOR. NOTE: MOTION DETECTOR IS A MANUAL-ON MOTION SENSOR. WILL TURN OFF AUTOMATICALLY WHEN NO ONE IS PRESENT AND MUST BE TURNED ON MANUALLY WITH A SWITCH
 - ⊕ F1 4" INCANDESCENT LOW VOLTAGE RECESSED FIXTURE
 - ⊕ F2 4" FLUORESCENT RECESSED FIXTURE
 - ⊕ F4 UNDER CABINET FLUORESCENT
 - ⊕ LIGHT SCONCE, WALL MOUNTED
 - ⊕ LIGHT, SURFACE MOUNTED AT CEILING
 - ⊕ LIGHT, PENDANT MOUNTED
- NOTE: ALL RECESSED LIGHTING HOUSINGS TO BE IC RATED

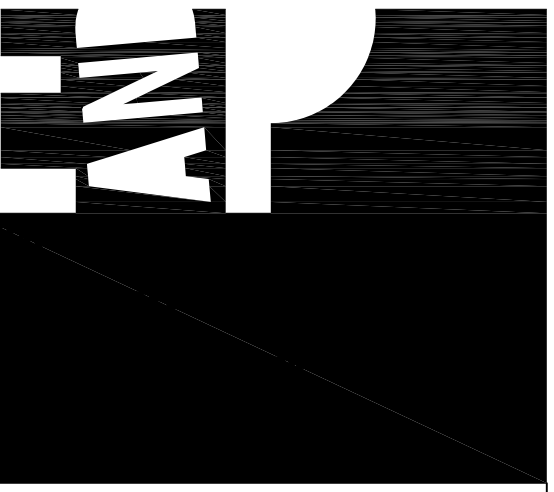
SHEET NOTES

- ALL EXTERIOR LIGHTS TO BE CONTROLLED BY A MOTION SENSOR & PHOTO CONTROL, C.L. OF FIXTURE AT 6'-10 1/2" A.F.F., MOTION DETECTOR AT 7'-10 1/2" A.F.F.
- UFER GROUNDING REQUIRED FOR MAIN ELECTRICAL PANELS PER CODE. BOND WATER PIPES AND ABOVE GROUND METAL GAS PIPING TO THE SERVICE GROUND PER CODE.
- ALL BRANCH CIRCUITS THAT SUPPLY 125 VOLT, 15 & 20-AMPERE OUTLETS INSTALLED IN ALL DWELLING UNIT BEDROOMS SHALL BE PROTECTED BY AN ARC-FAULT CIRCUIT INTERUPTER PER CODE
- PROVIDE ONE DEDICATED 20-AMP BRANCH CIRCUIT TO SUPPLY WASHING MACHINE RECEPTACLE OUTLETS AS REQUIRED BYCODE
- PROVIDE ONE DEDICATED 220-VOLT RECEPTACLE OUTLET FOR CLOTHES DRYER WITH 20-AMP BRANCH CIRCUIT AS REQUIRED BY CODE
- PROVIDE A 4-WIRE GROUNDED ELECTRICAL OUTLET FOR CLOTHES DRYER AND ELECTRICAL RANGE PER CODE.
- PROVIDE AT LEAST ONE DEDICATED 20-AMP BRANCH CIRCUIT IN EACH BATHROOM TO SUPPLY BATHROOM RECEPTACLE OUTLETS PER CODE. OTHER EQUIPMENT WITHIN THE SAME BATHROOM MAY BE SUPPLIED BY THE SAME BRANCH CIRCUIT WHERE THE BRANCH CIRCUIT SUPPLIES A SINGLE BATHROOM ONLY.

SUBMITTAL : DATE :
ZONING SUBMITTAL 070717

SHEET:
**PROPOSED
LIGHTING /
ELECTRICAL**

3



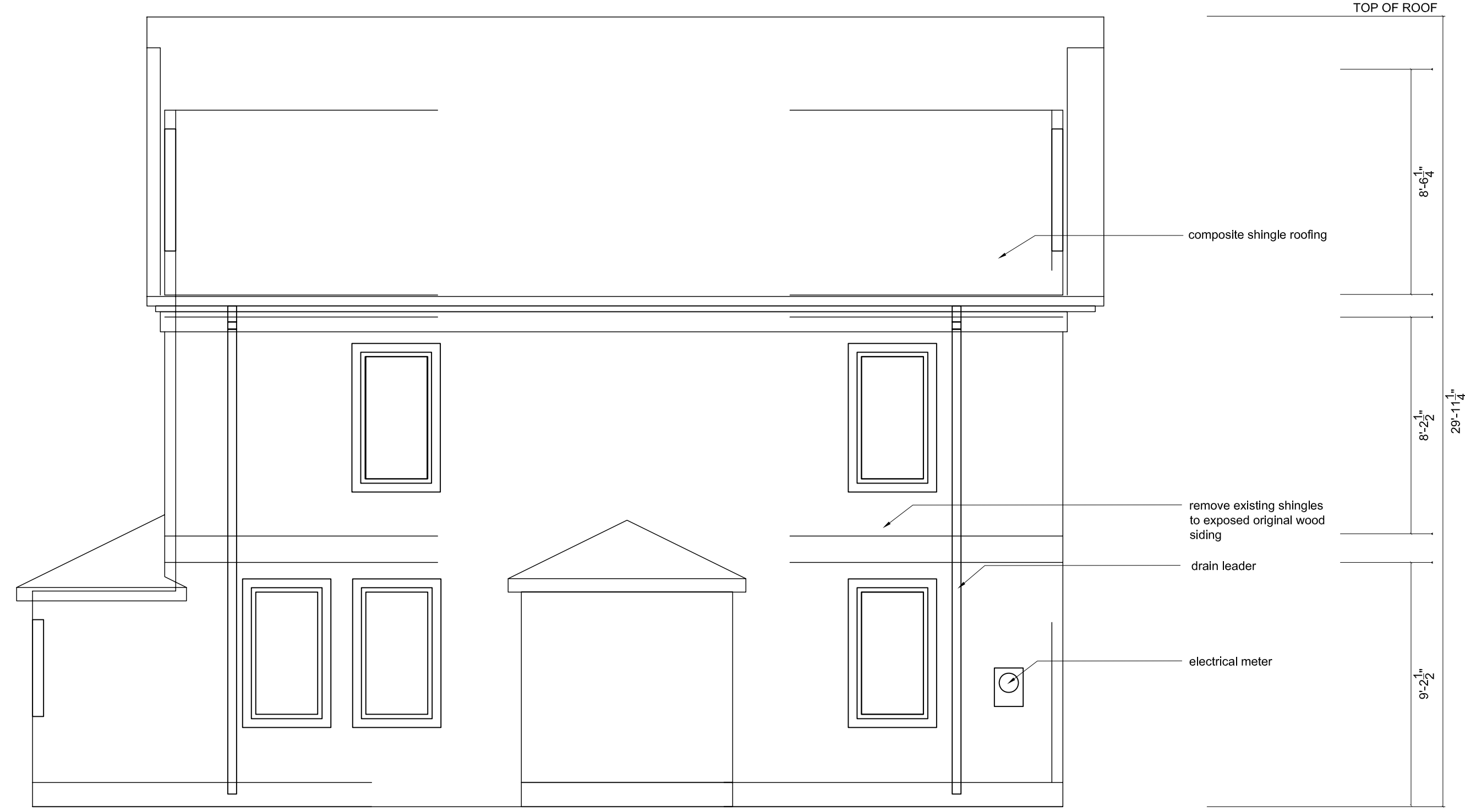
**116 SHERIDAN STREET
PORTLAND, MAINE 04101
BLOCK: J, LOT: 10**

SUBMITTAL : ZONING SUBMITTAL
DATE : 070717

SHEET:
**EXISTING/
PROPOSED
ELEVATIONS**



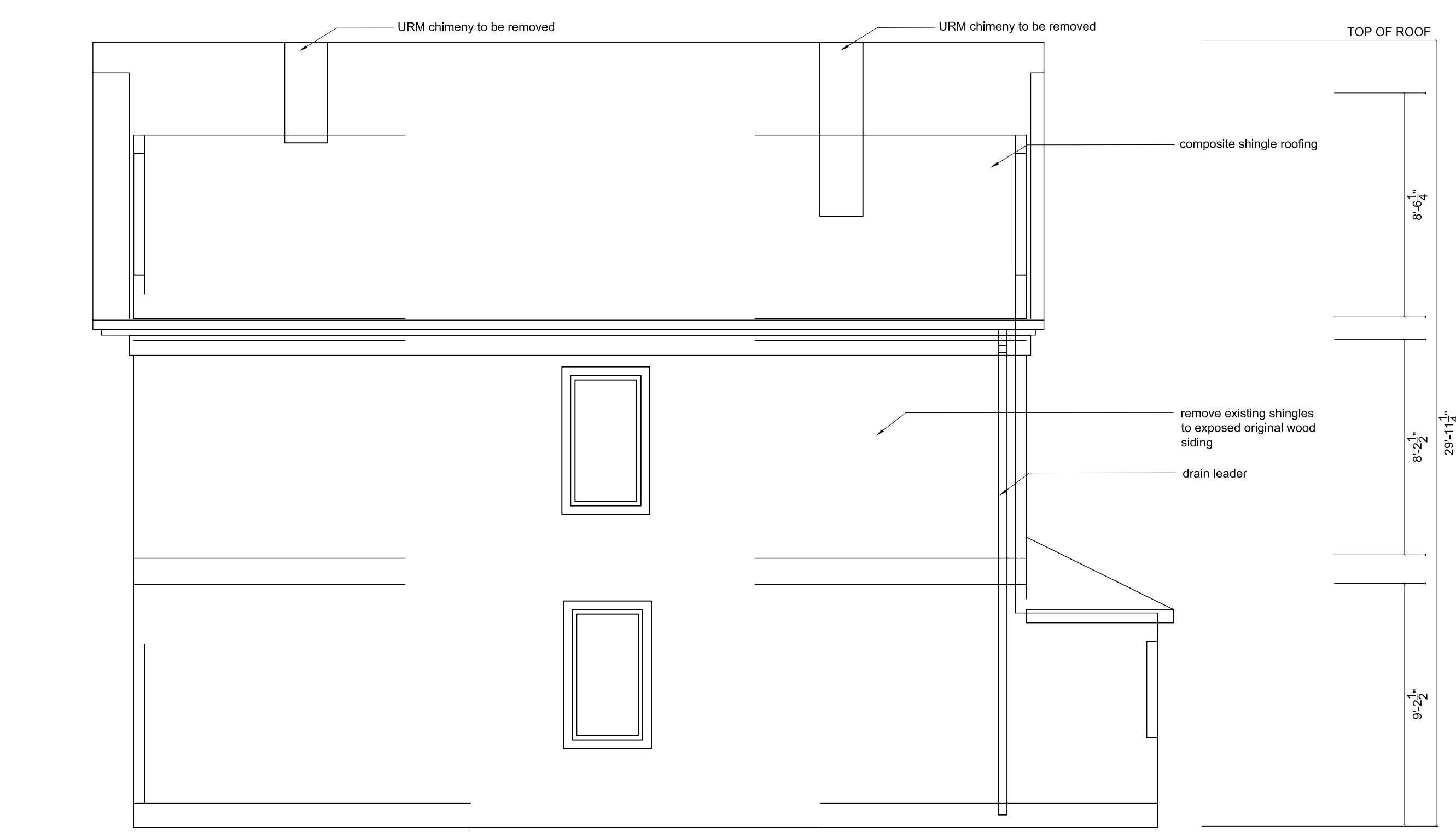
2 PROPOSED SOUTH ELEVATION
scale: 1/4"=1'-0"



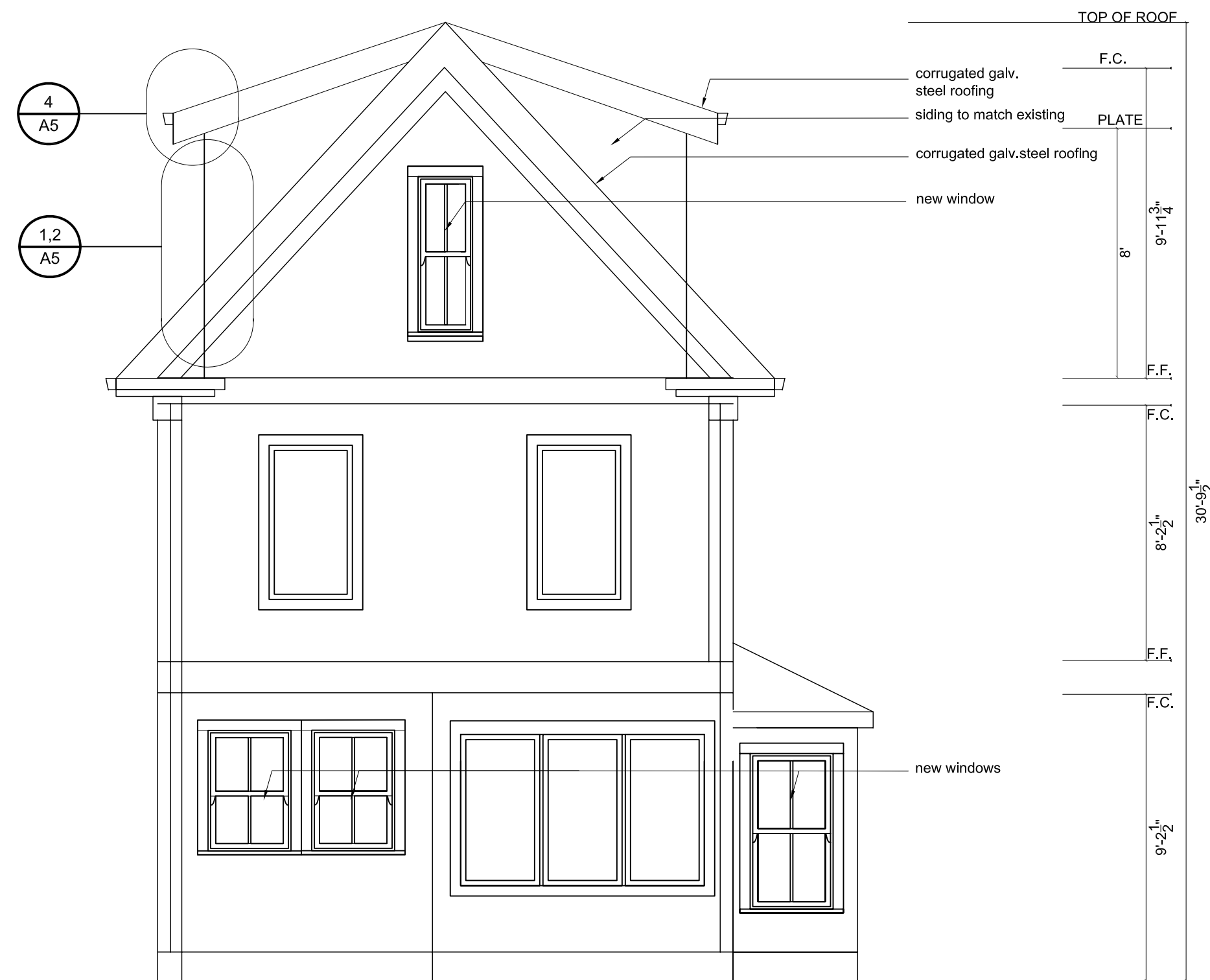
2 EXISTING SOUTH ELEVATION
scale: 1/4"=1'-0"



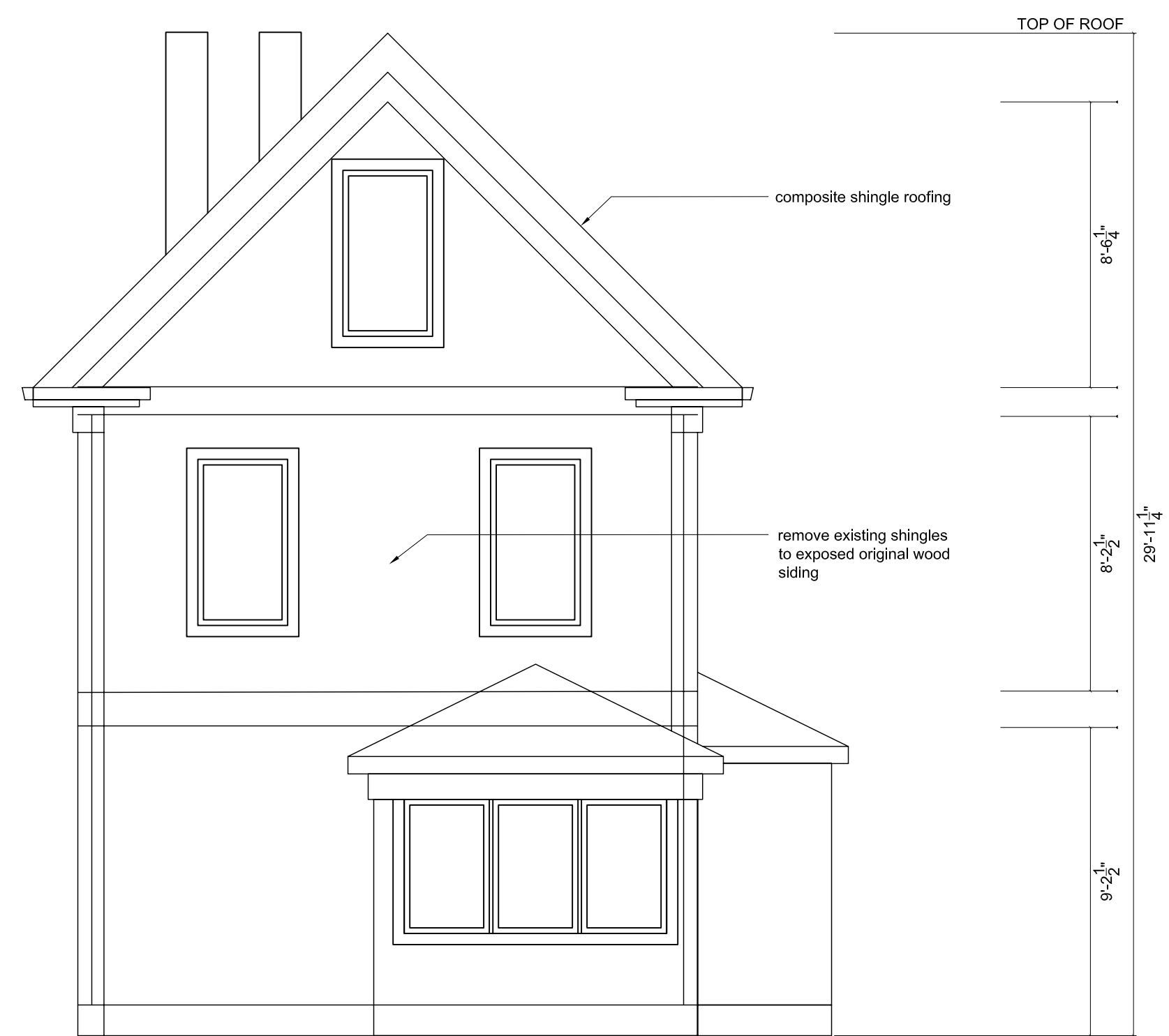
1 PROPOSED NORTH ELEVATION
scale: 1/4"=1'-0"



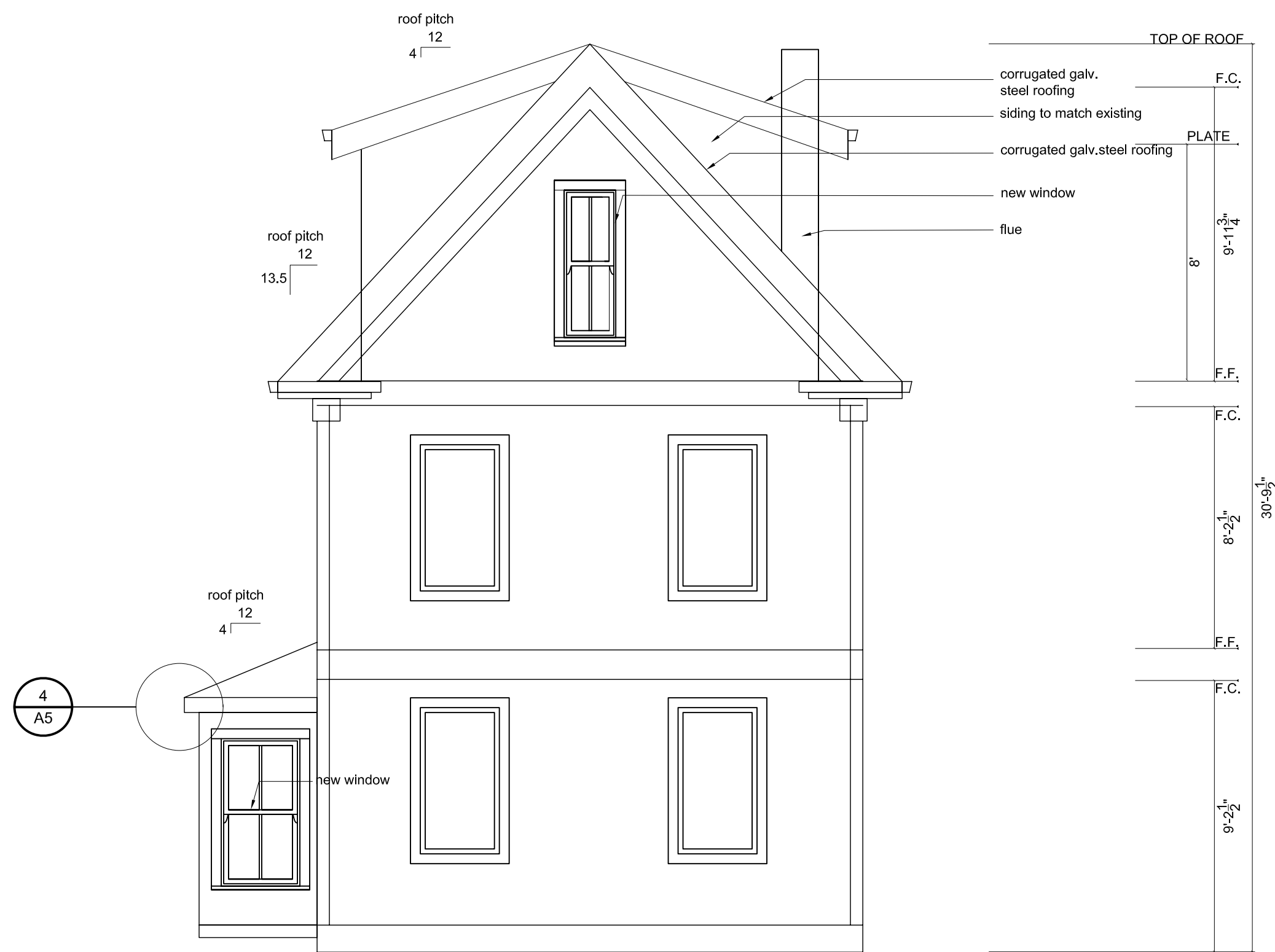
1 EXISTING NORTH ELEVATION
scale: 1/4"=1'-0"



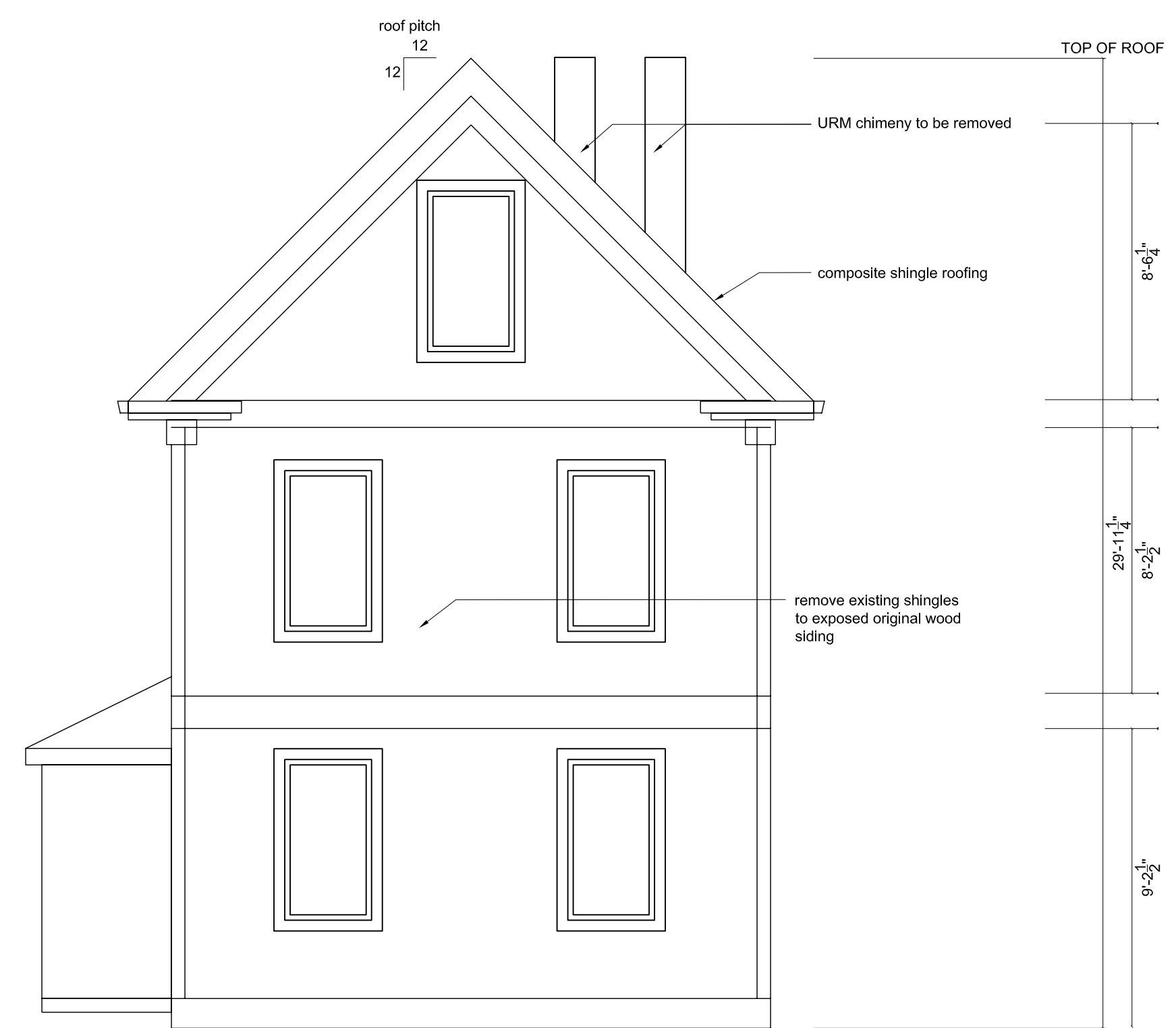
2 PROPOSED WEST ELEVATION
scale: 1/4"=1'-0"



2 EXISTING WEST ELEVATION
scale: 1/4"=1'-0"



1 PROPOSED EAST ELEVATION
scale: 1/4"=1'-0"



1 EXISTING EAST ELEVATION
scale: 1/4"=1'-0"

**116 SHERIDAN STREET
PORTLAND, MAINE 04101
BLOCK: J, LOT: 10**

SUBMITTAL : DATE :
ZONING SUBMITTAL 070717

SHEET:
**EXISTING/
PROPOSED
ELEVATIONS**

EXISTING CEILING FRAMING,
PROVIDE 2x BLKG FASTENED
TO EXISTING JOIST W/ 3-8D W/
CLIPS WHERE NECESSARY

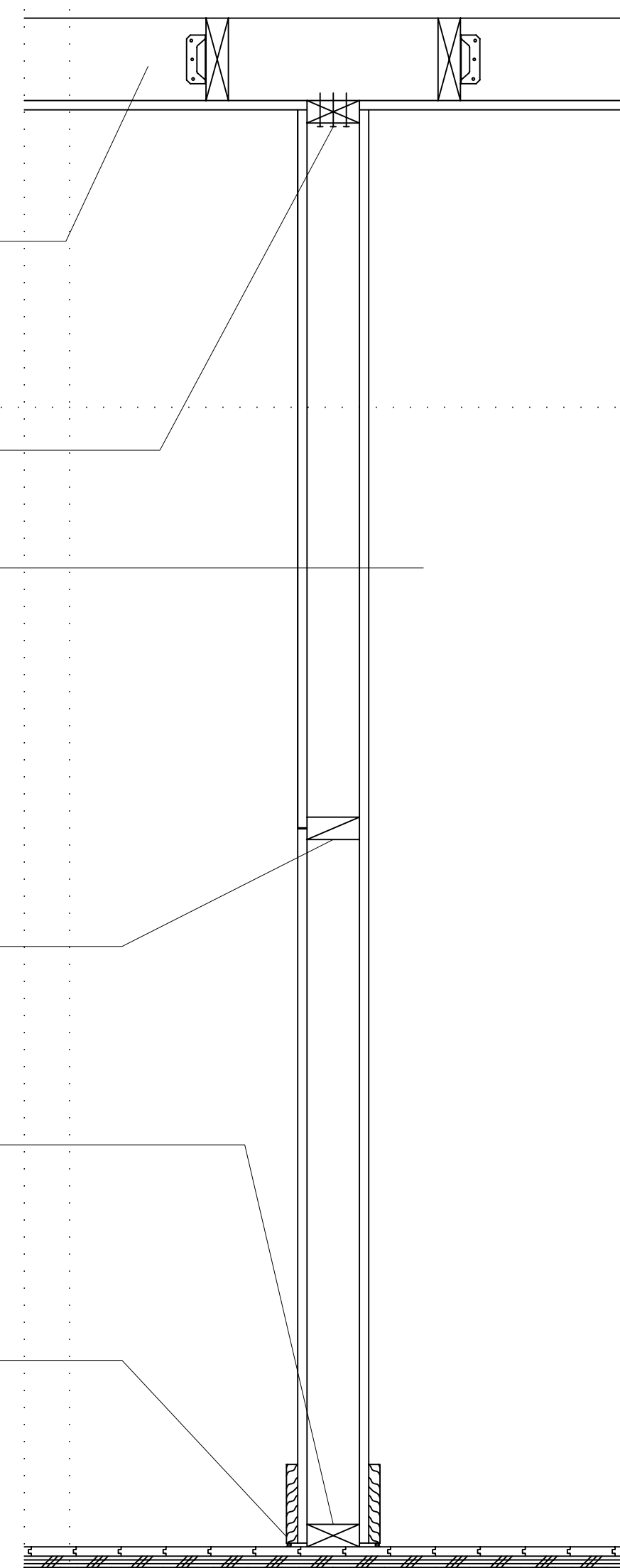
2x TOP PLATE, FASTEN TO 2x
BLOCKING W/ 3-16D @16" O.C.

2x STUDS @ 16" O.C. W/ ONE
LAYER 5/8" GYPSUM BD. EACH
SIDE, NAILED WITH 6D COOLER
OR WALLBOARD NAILS/
SCREWS @ 7" O.C. W/ END
JOINTS ON NAILING MEMBERS.
STAGGER JOINTS EACH SIDE

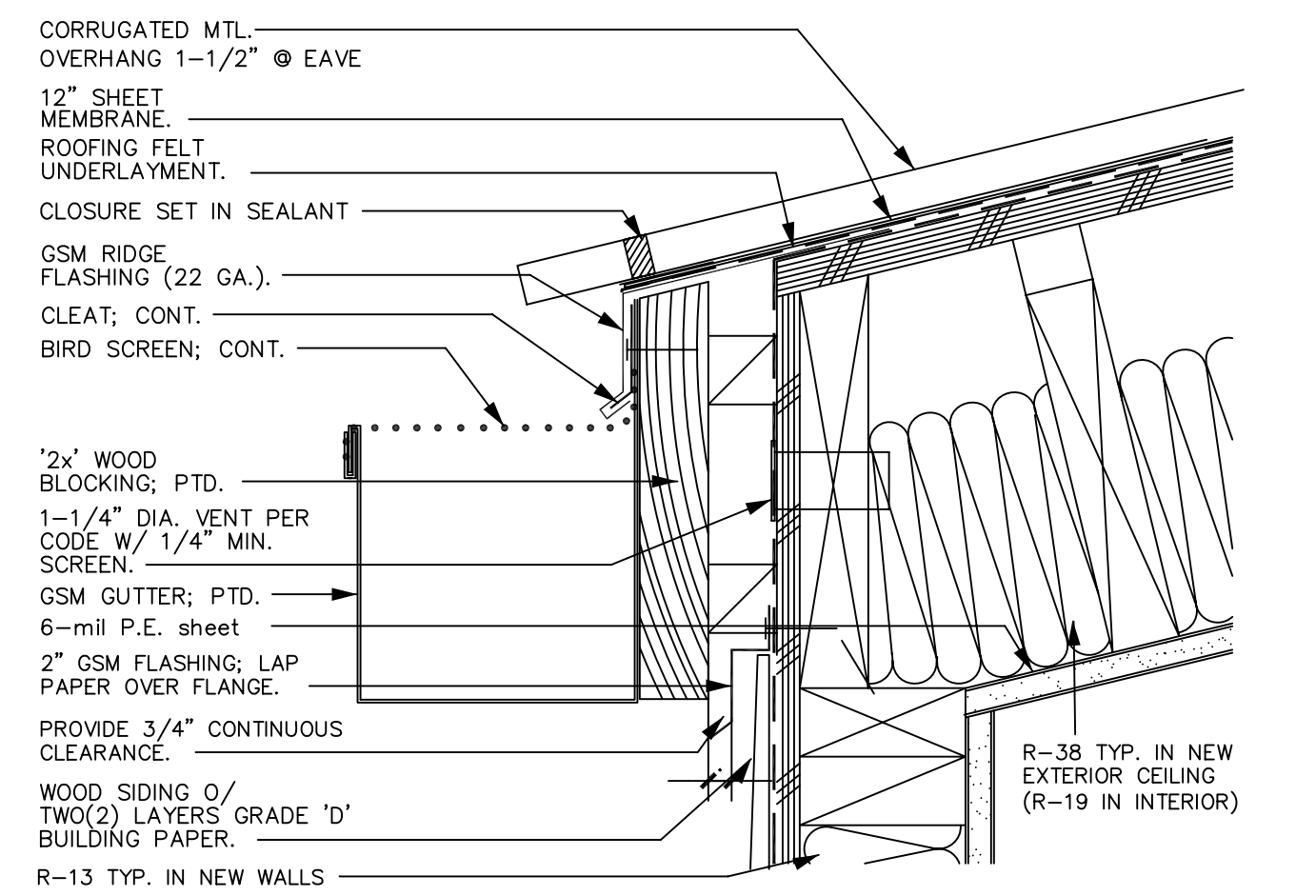
2X BLOCKING

SOLE PLATE, CONNECT TO (E)
SUB FLOOR W/ 16D @ 16" O.C.,
CONNECT STUD TO SOLE
PLATE W/ 16D TOENAILED

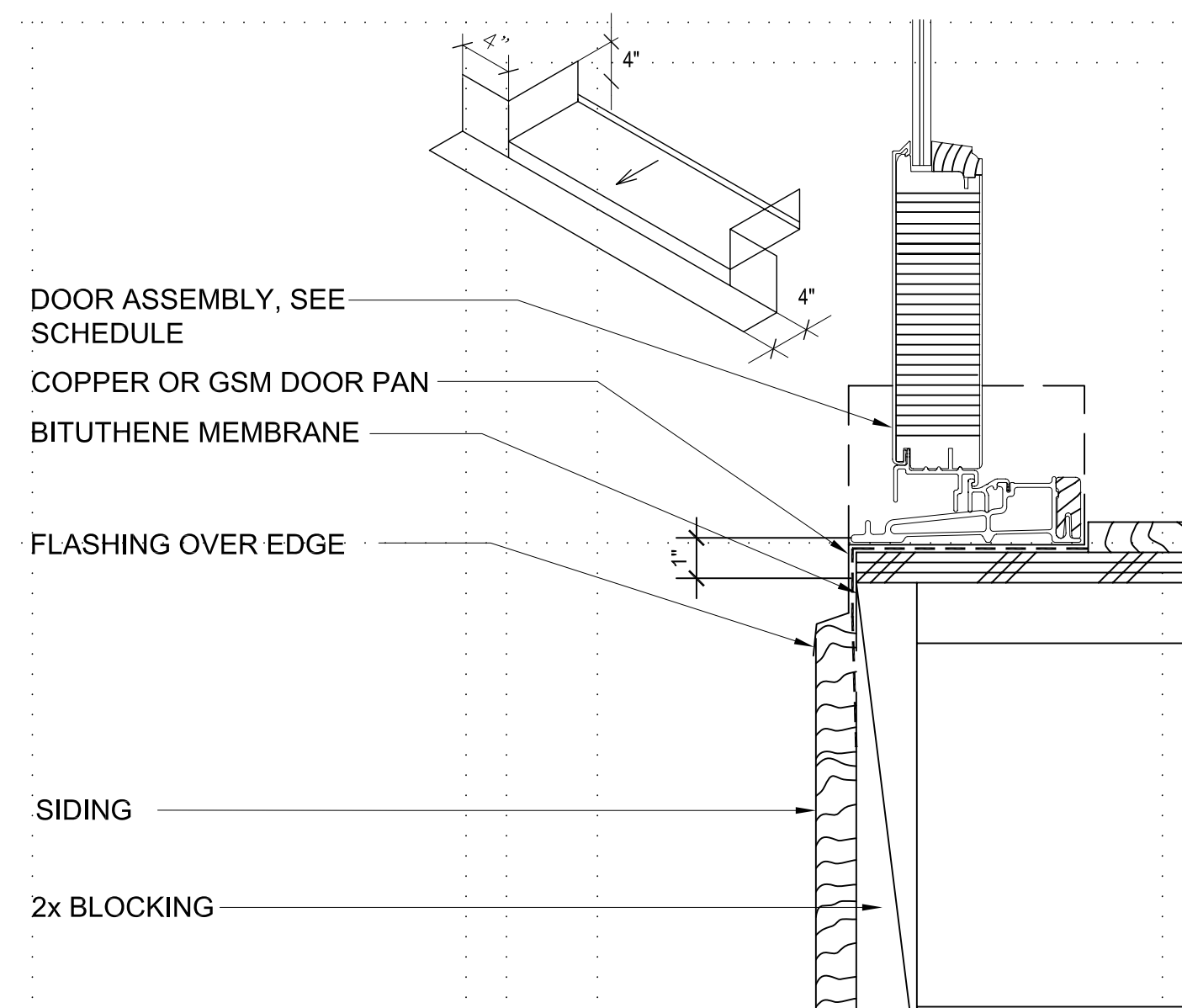
1x WD. BASE, W/ SEALANT AND
BACKER ROD AT FLOOR



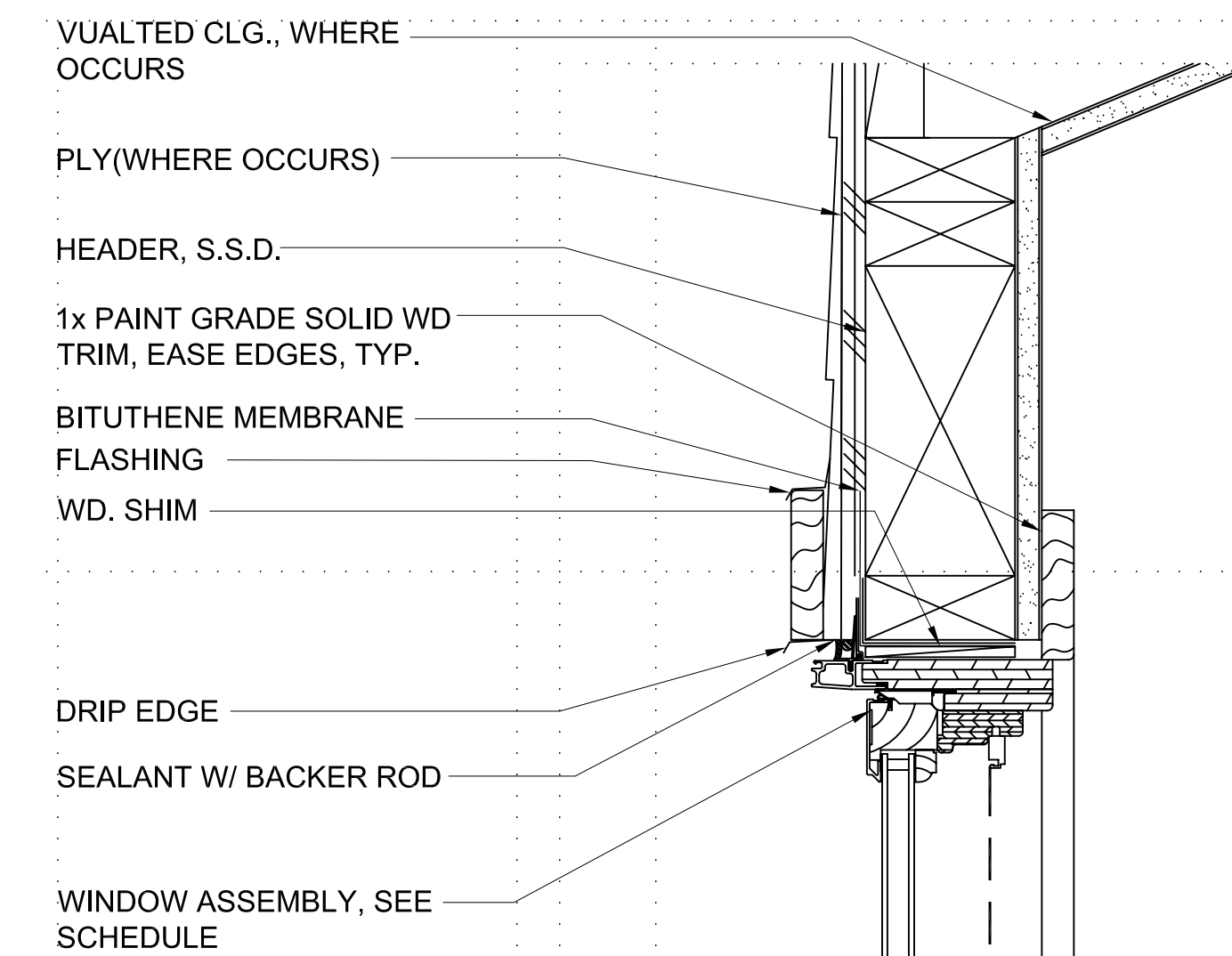
5 TYPICAL NON LOAD BEARING PARTITION



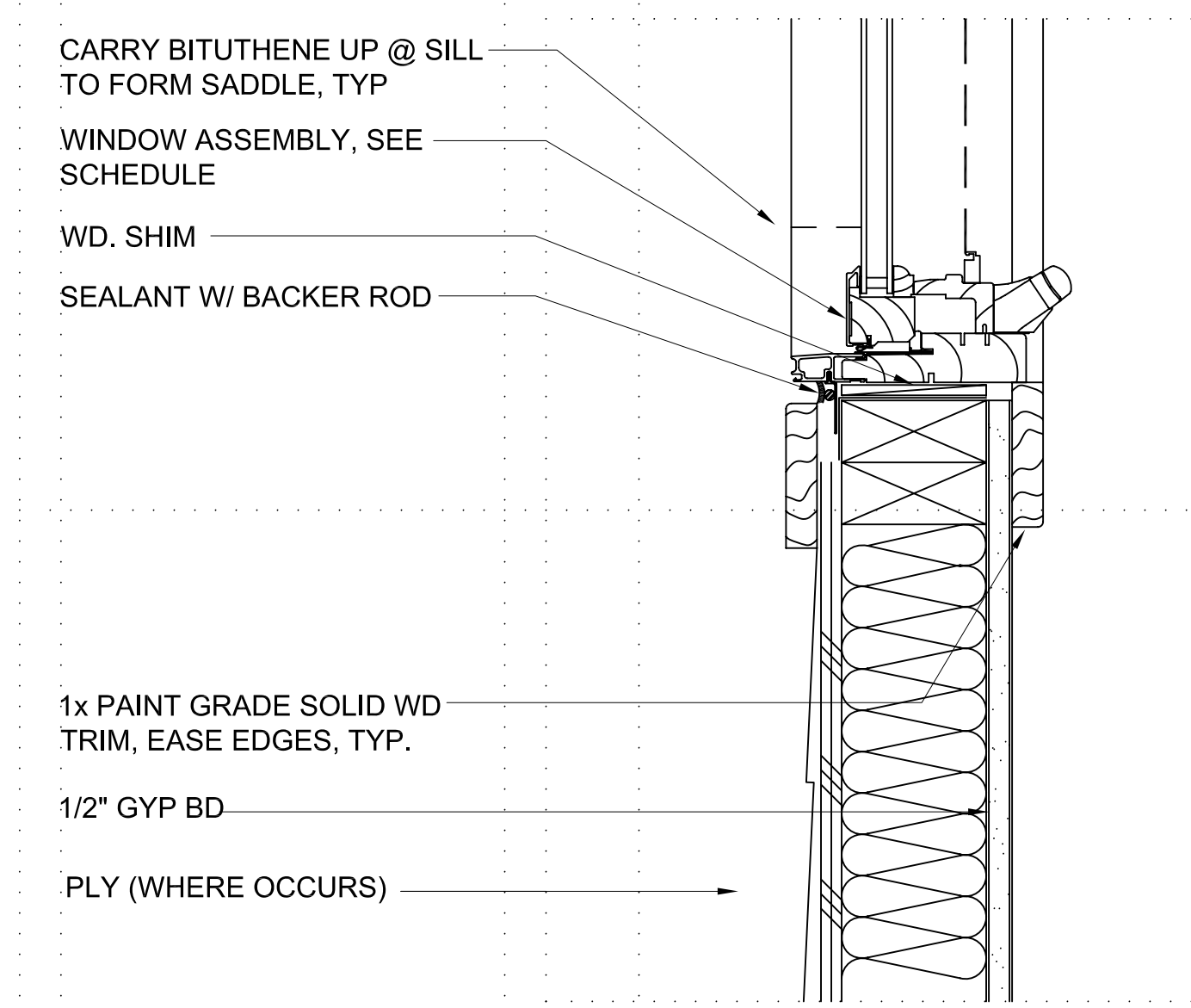
4 METAL ROOF GUTTER @ EAVE



3 TYPICAL DOOR SILL



2 TYPICAL WINDOW HEAD



1 TYPICAL WINDOW SILL

116 SHERIDAN STREET
PORTLAND, MAINE 04101
BLOCK: J, LOT: 10

SUBMITTAL : DATE :
ZONING SUBMITTAL 070717

SHEET:
DETAILS

6



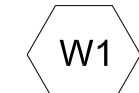
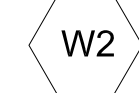
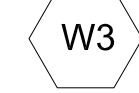
**116 SHERIDAN STREET
 PORTLAND, MAINE 04101
 BLOCK: J, LOT: 10**

WINDOW TAG

WDW TYPE

WDW SIZE

NOTES

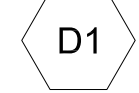

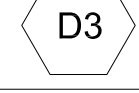
 W1	double hung(2lights o/ 2lights)	1'-9 3/8" x 4'-9"	wooden window/ marvin brand # wudh1618, dbl glazed(U factor: .46, R-value: 2.18)
 W2	double hung(2lights o/ 2lights)	2'-9 3/8" x 4'-9"	wooden window/ marvin brand # wudh2824, dbl glazed(U factor: .46, R-value: 2.18)
 W3	double hung(2lights o/ 2lights)	2'-9 3/8" x 3'-9"	wooden window/ marvin brand # wudh2818, dbl glazed(U factor: .46, R-value: 2.18)

DOOR TAG

DOOR TYPE

DOOR SIZE

NOTES

 D1	exterior(single light)	3'-0" x 6'-8"	wooden door/ marvin brand # 2868, dbl glazed(U factor: .44, R-value: 2.27)
 D2	interior	2'-6" x 6'-8"	1-3/8" wooden door/ simpson brand# 720, single panel shaker style
 D3	interior pocket	2'-6" x 6'-8"	1-3/8" wooden door/ simpson brand# 720, single panel shaker style w/ overhead track

SUBMITTAL : DATE :
 ZONING SUBMITTAL 070717

SHEET:
SCHEDULES