

- KEY**
- Post bearing on beam
  - Column embedded in wall basement floor & 1st floor
  - Built-up column w/ (4) members assembled per C6 / SS.0

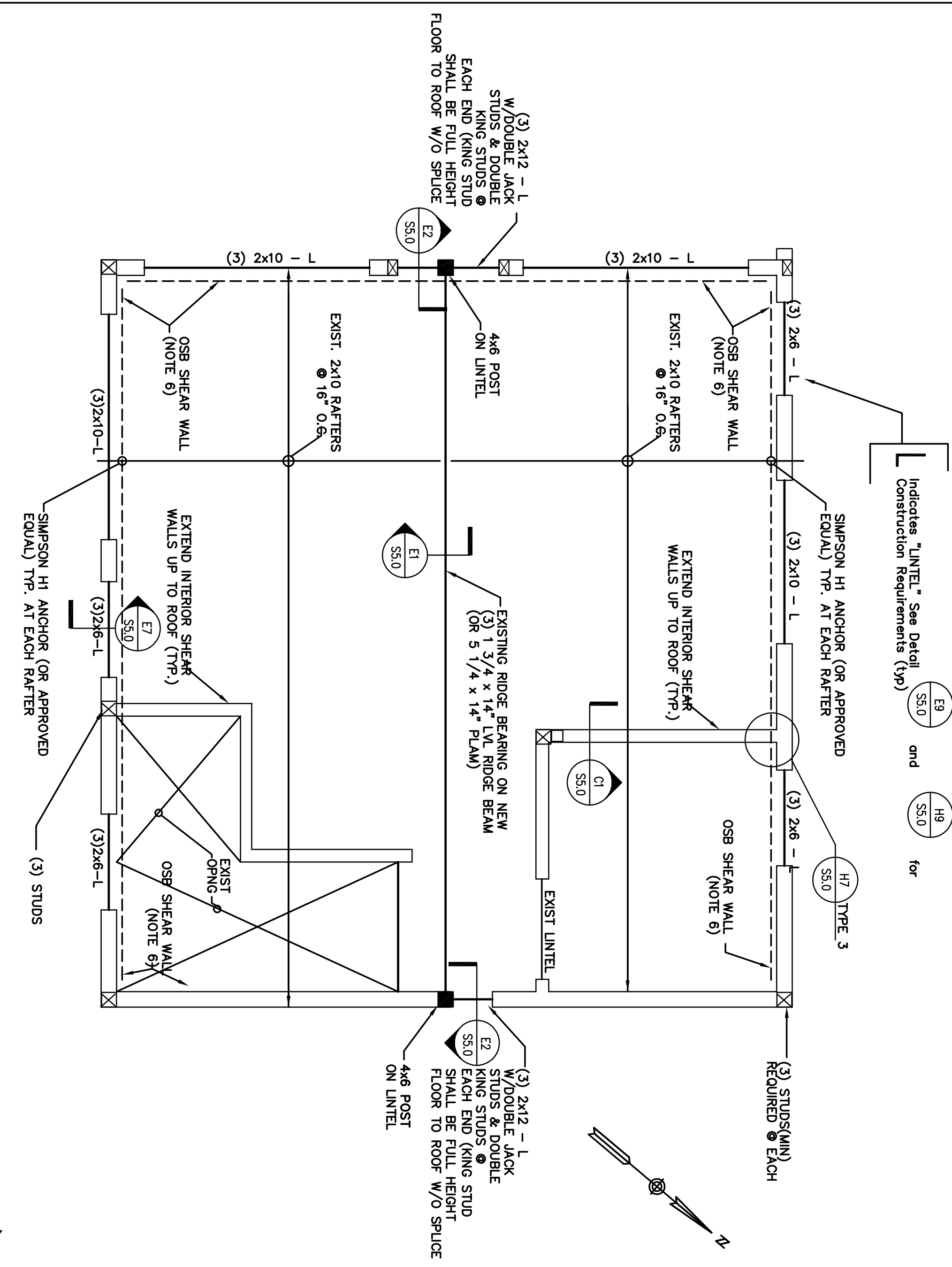
- NOTES:**
1. See Drawing S1.0 for additional notes and requirements.
  2. See Drawings SS.0 and SS.1 for required typical details.
  3. Spacing of floor framing materials shall not exceed 16" on center. Add additional joists and other components as necessary to accommodate this requirement.
  4. PT shall be pressure treated #1 SYP (typical, unless noted otherwise). All Simpson hangers in contact with pressure treated lumber to have ZMAX finish (SYP).
  5. Align column centerlines with columns above, typical. Add post within floor cavity between columns, typical (see C4 / SS.0).
  6. Interior walls and columns on this plan are located between main and upper levels.
  7. See Arch. Drawg. for Deck Guardrail requirements. G.C. shall construct guard rail system capable of withstanding 200 pounds per lineal foot or 200lbs applied in any direction at the top of rail (typical at all guard rails).
  8. Coordinate size and locations of roof openings at chimney w/ Architectural Drawings and masonry contractor (SYP).
  9. Masonry chimney materials shall not be supported by wood framing.
  10. Walls labeled as "shearwalls" shall have 7/16" OSB wall sheathing w/ all edges fastened to 2x lumber using 8d nails @ 2' o.c. Add blocking between studs on exterior walls. Sheathing shall be placed horizontally. If placed horizontally, then end joints shall be offset 4'-0". Except at edges Connect sheathing to middle supports w/ 8d nails @ 12" o.c. Remove finishes so that OSB is applied directly to face of stud.

- UPPER LEVEL FLOOR FRAMING PLAN 3/8" = 1'-0"**
- S4.1 / (W/ MAIN LEVEL WALLS SHOWN BELOW)**

**PRELIMINARY**

**NOT FOR CONSTRUCTION**

UNDER NO CIRCUMSTANCES SHALL THIS DRAWING BE USED TO DEVELOP SHOP DRAWINGS OR FABRICATE NEW MATERIALS.



- KEY**
- Post bearing on beam
  - Column embedded in wall between 2nd floor & roof (columns shall either bear on beams or be extended to bear directly on foundation).
  - Built-up column w/ (4) members assembled per C6 / SS.0
- NOTES:**
1. See Drawings SS.0 and SS.1 for required typical details and drawings showing S1.0 for additional requirements.
  2. Interior walls and columns shown on this plan are located directly below the high roof.
  3. Align column centerlines with columns above, typical. See Detail X / C4/SS.1 for typical blocking at floor cavities.
  4. Masonry chimney materials shall not be supported by wood framing.
  5. The abbreviation "PALAM" indicates "Paralim" products as manufactured by True Joist MacMillan (or approved equivalent).
  6. Walls labeled as "shearwalls" shall have 7/16" OSB wall sheathing w/ all edges fastened to 2x lumber using 8d nails @ 2' o.c. Add blocking between studs on exterior walls. Sheathing shall be placed horizontally. If placed horizontally, then end joints shall be offset 4'-0". Except at edges Connect sheathing to middle supports w/ 8d nails @ 12" o.c. Remove finishes so that OSB is applied directly to face of stud.

- ROOF FRAMING PLAN 3/8" = 1'-0"**
- S4.1 / (W/ UPPER LEVEL WALLS SHOWN BELOW)**

ISSUED FOR PERMIT ONLY

**Upper Level Floor & Roof Framing Plans**

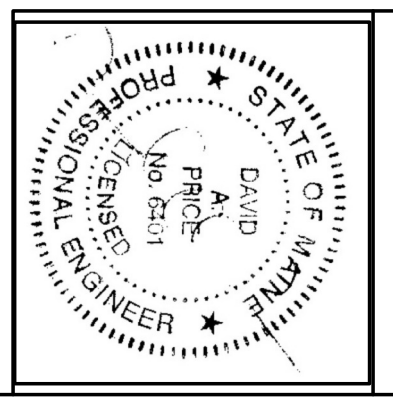
Drawn by: TDP      File Name: Alford\S4.1

Scale: As Noted      Project No. 121-08

Date: 11/11/08      Revised: 11/11/08

**Hasan L.L.C.**

134 Sheridan Street  
Portland, Maine



**Price Structural Engineers, Inc.**

75 Farms Edge Road  
North Yarmouth, ME 04097  
207.846.0000  
207.846.1633 fax

**Richard Renner Architects**

35 Pleasant Street  
Portland, ME 04101  
207.773.8888  
207.773.9599 fax

133 South Main Street  
Sherborn, MA 01770  
608.651.2385  
608.651.0911 fax

S4.1