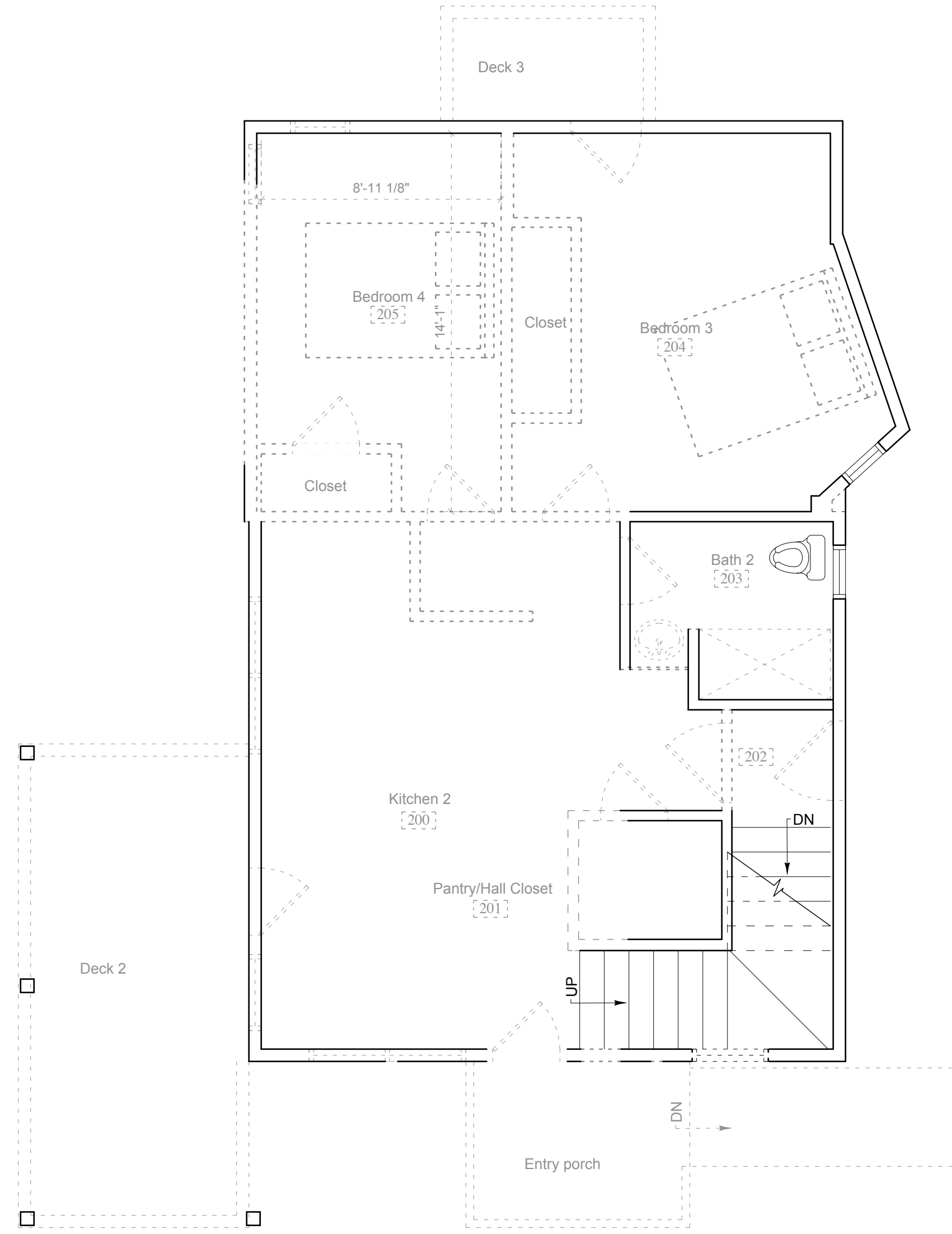
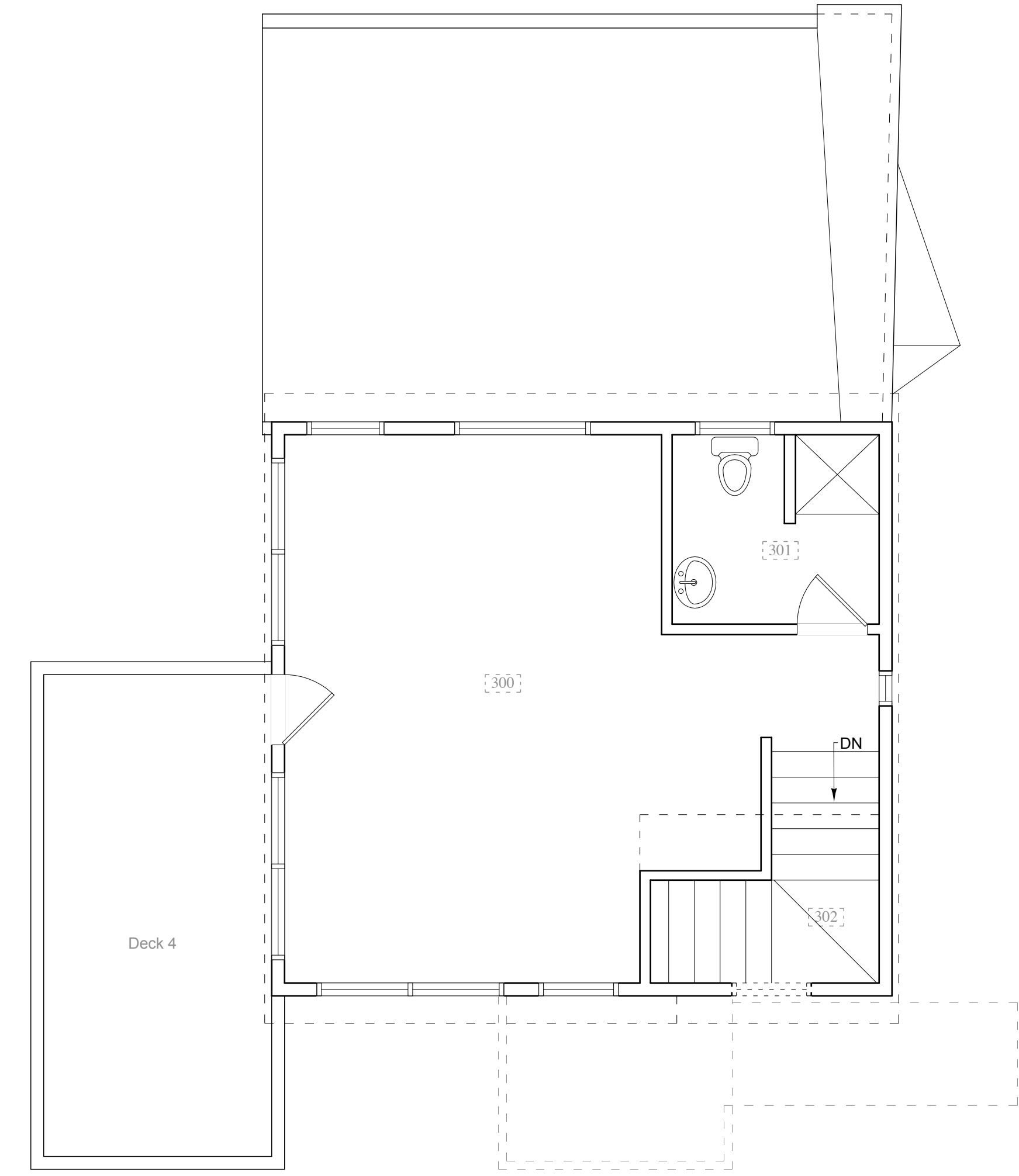


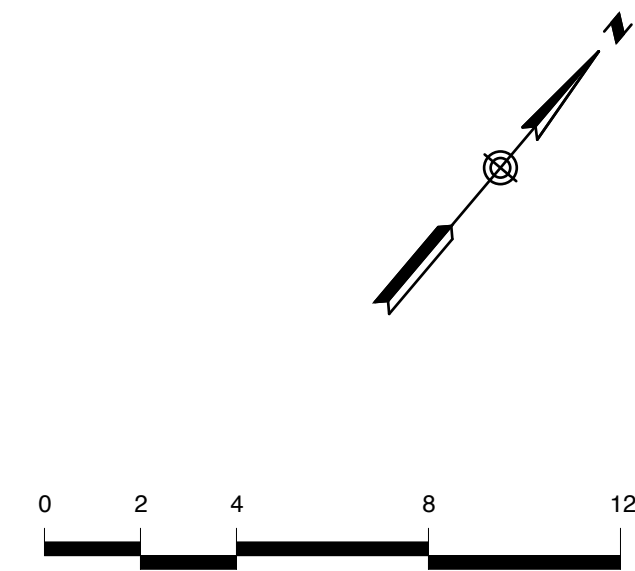
1 First Floor Plan
SCALE: 1/4" = 1'-0"



2 Second Floor Plan
SCALE: 1/4" = 1'-0"



3 Third Floor Plan
SCALE: 1/4" = 1'-0"



NOT FOR CONSTRUCTION 08/11/2008

Proposed Demo Floor Plans

Drawn by: TJD File Name: A1.1 Proposed New....
Scale: 1/4" = 1'-0" Project No.
Date: 08/11/08 Revised:

Alfond Weinstein Residence

134 Sheridan Street
Portland, Maine

Consultants:

RR|A
Richard RemeriArchitects

35 Pleasant Street
Portland, ME 04101
508.651.2800
207.773.9599
207.773.9599 fax
508.651.0911 fax

D1.1