

# BLADE SIGN

Existing bracket



Proposed blade sign (Recently Approved)



**Dimensional Hanging Blade Sign**

Material: Repurposed corrugated steel with steel tube frame, with vinyl lettering and logo

Qty: 1, double-sided

Mounted on existing blade sign bracket

Dimensions: 3'x3'

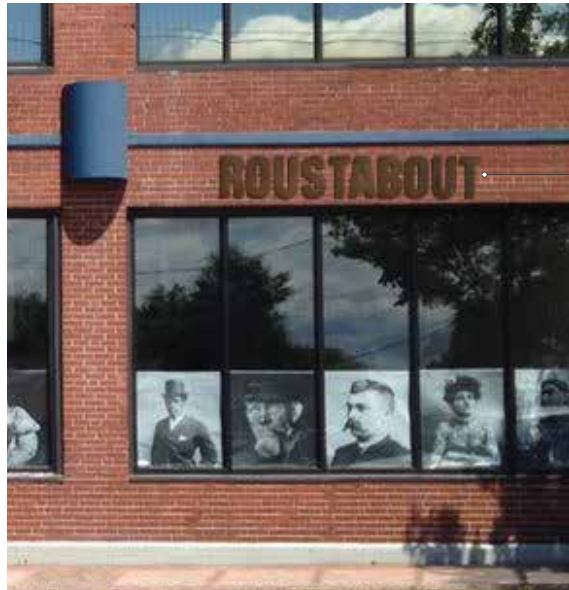
FRONT



BACK



# FACADE SIGN



16" tall CorTen Steel letters  
Approx. 100" wide  
1/4" thick  
Mounting Hardware: 2" Projected Spacers

# ROUSTABOUT

