

August 27, 2015

Kit Paschal
Poplar & Co DBA Roustabout
59 Washington Ave
Portland, ME 04101

Kit,

Thanks for providing me with copies of your proposed signs for ~~Maine & Leine~~ ^{Roustabout} located in the building my firm owns at 75 Washington Avenue. I have included the proposed sign and locations as Exhibit A to this letter.

You have my permission to install the sign on the building. Specifically, the rectangular sign will be located on the existing bracket with a number 59 above the front door to your space on Washington Ave. The CorTen steel letters will be affixed to the brick as shown. You also have my permission to light the signs with spot accent lights. I will expect you to comply with all city sign ordinances and install the signs in a professional manner.

I wish you luck with your opening and look forward to being a customer.

Regards,

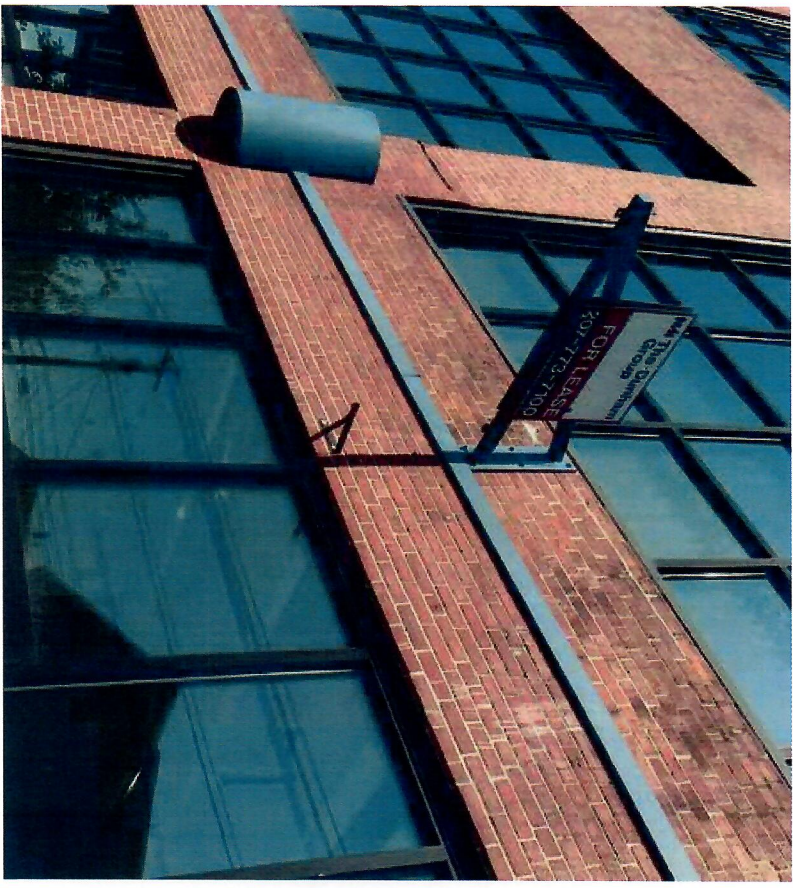


Jed Harris
Managing Partner, Cotton Street Holdings LLC

BLADE SIGN

Exhibit A

Existing bracket



Proposed blade sign



Dimensional Hanging Blade Sign

Material: Repurposed corrugated steel with steel tube frame, with vinyl lettering and logo

Qty: 1, double-sided

Mounted on existing blade sign bracket

Dimensions: 3'x3'

FRONT



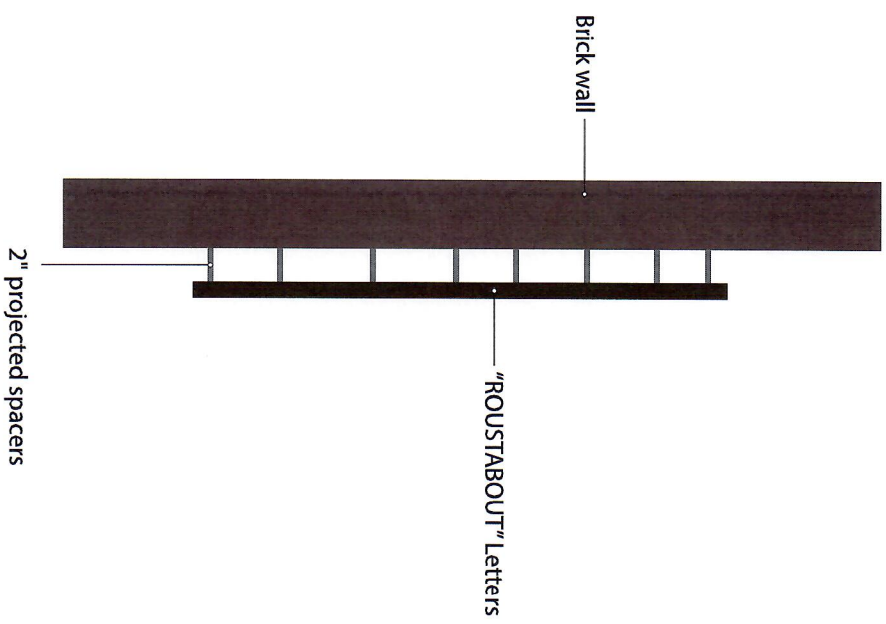
BACK



FACADE SIGN



16" tall CorTen Steel Letters
Approx. 100" wide
1/4" thick
Mounting Hardware: 2" Projected Spacers



ROUSTABOUT