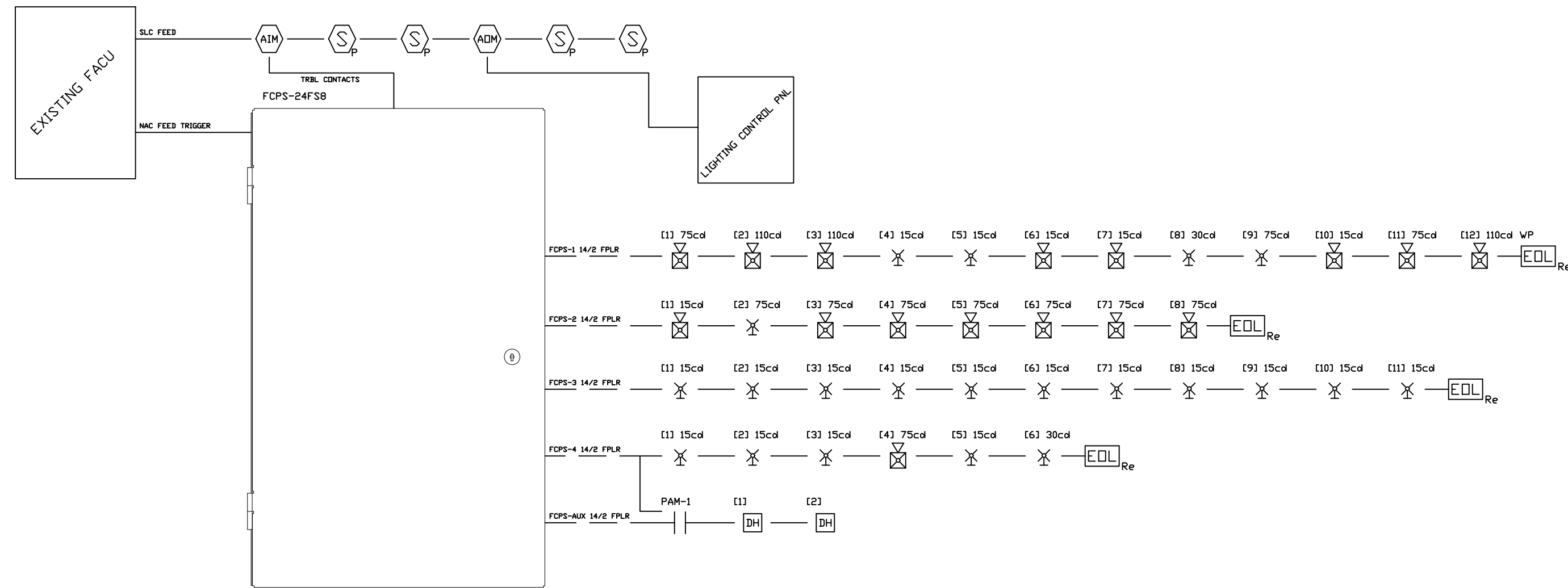




Reviewed for Code Compliance
Permitting and Inspections Department
Approved with Conditions
03/16/2020



Fire Alarm

- FACU Fire Alarm Control Unit
FAA Fire Alarm Annunciator
NAC Fire Alarm Power Supply

Notification Appliances

- Horn Strobe, L.F. = Low Frequency Sounder (520Hz)
Strobe

SLC Modules

- Addressable Output Module (Relay)
Addressable Input Module (Monitor)
Fault Isolation Module

Miscellaneous

- Remote Test Switch
End of Line (EOL) Resistor
Magnetic Door Holder

Initiating Devices

- Pull Station
Smoke Detector, Photoelectric
Smoke and RoR Heat Detector
Duct Smoke Detector, Photoelectric
Smoke, RoR Heat, and CO Detector
Heat Detector, Fixed 135deg F
Heat Detector, RoR and Fixed 135deg F
Carbon Monoxide Detector

Fire Sprinkler Initiating Devices

- Fire Sprinkler Waterflow Switch
Fire Sprinkler Valve (Tamper) Switch
Fire Sprinkler Low Pressure (Air) Switch
Fire Sprinkler Low Temperature Detector

Table: FCPS-24S8 Battery Calculation. Secondary Power Source Requirements. Includes columns for Device Type, Qty, Standby Current (amps), and Secondary Alarm Current (amps). Total Standby Load: 0.0950, Total Alarm Load: 3.7380.

Table: FCPS-24S8 Battery Calculation. Calculation in Total Sheet. Includes columns for Standby Load Current (Amps), Alarm Load Current (Amps), Total Current Load, and Total Ampere Hours Required. Total Ampere Hours Required: 3.11 AH, Battered to be Used: 7Ah.

Table: NOTIFIER by Honeywell FACU Additional Current Draw. NFW2-100 Fire Alarm Control Panel. Contractor to verify on-site that there is sufficient battery capacity. Includes Part Number, Qty, Primary Non-Alarm, Primary Alarm, and Total (Amperes) and Total (Amp Hours).

Table: Fire-ITE Alarms by Honeywell FCPS-24S8 Circuit Detail. NAC / Output # 1. Includes columns for Device, Qty, Non-Alarm Draw, Total, Alarm Draw, and Total. Total Standby Load: 0.000000, Total Alarm Load: 1.411000.

Table: Fire-ITE Alarms by Honeywell FCPS-24S8 Circuit Detail. NAC / Output # 2. Includes columns for Device, Qty, Non-Alarm Draw, Total, Alarm Draw, and Total. Total Standby Load: 0.000000, Total Alarm Load: 1.014000.

Table: Fire-ITE Alarms by Honeywell FCPS-24S8 Circuit Detail. NAC / Output # 3. Includes columns for Device, Qty, Non-Alarm Draw, Total, Alarm Draw, and Total. Total Standby Load: 0.000000, Total Alarm Load: 0.794000.

Table: Fire-ITE Alarms by Honeywell FCPS-24S8 Circuit Detail. NAC / Output # 4. Includes columns for Device, Qty, Non-Alarm Draw, Total, Alarm Draw, and Total. Total Standby Load: 0.000000, Total Alarm Load: 0.374000.

Table: Fire-ITE Alarms by Honeywell FCPS-24S8 Circuit Detail. Auxiliary Circuit Draw. Includes columns for Device, Qty, Non-Alarm Draw, Total, Alarm Draw, and Total. Total Standby Load: 0.030000, Total Alarm Load: 0.000000.

Table: FCPS Voltage Drop. Starting Voltage: 24 Volts, Minimum Voltage @ EOL: 16 Volts, Voltage Drop Warning %: 15.00%. Includes columns for Circuit Name, Current Draw, Wire Type, Resistance, Length, Actual Resistance, Voltage @ EOL, and Percent Drop.

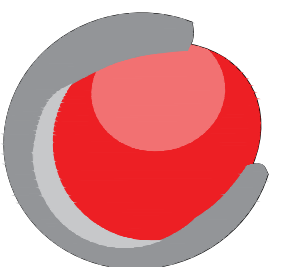
Table: Connection matrix showing signal types and activation points. Columns include: ACTUATE COMMON ALARM INDICATOR, ACTUATE COMMON ALARM INDICATOR SIGNAL, ACTUATE COMMON SUPERVISORY SIGNAL, ACTUATE COMMON TROUBLE INDICATOR, ACTUATE COMMON TROUBLE SIGNAL, ACTUATE NOTIFICATION APPLIANCES, ACTUATE NOTIFICATION APPLIANCES RELAY, ACTUATE DOOR HOLDER RELAY, ACTUATE LIGHTING CONTROL, TRANSMIT ALARM SIGNAL TO CENTRAL STATION, TRANSMIT SUPERVISORY SIGNAL TO CENTRAL STATION, TRANSMIT TROUBLE SIGNAL TO CENTRAL STATION.

CITY/TOWN APPROVAL

NICET APPROVAL

Table: Revisions. 0 Issued for review, 1, 2, 3.

Table: Project Information. SMRT 10-29-2019, DATE: 10-29-2019, AUTHOR: SMRT + ZS, SCALE: NONE, 75 Washington Avenue, Portland, ME.

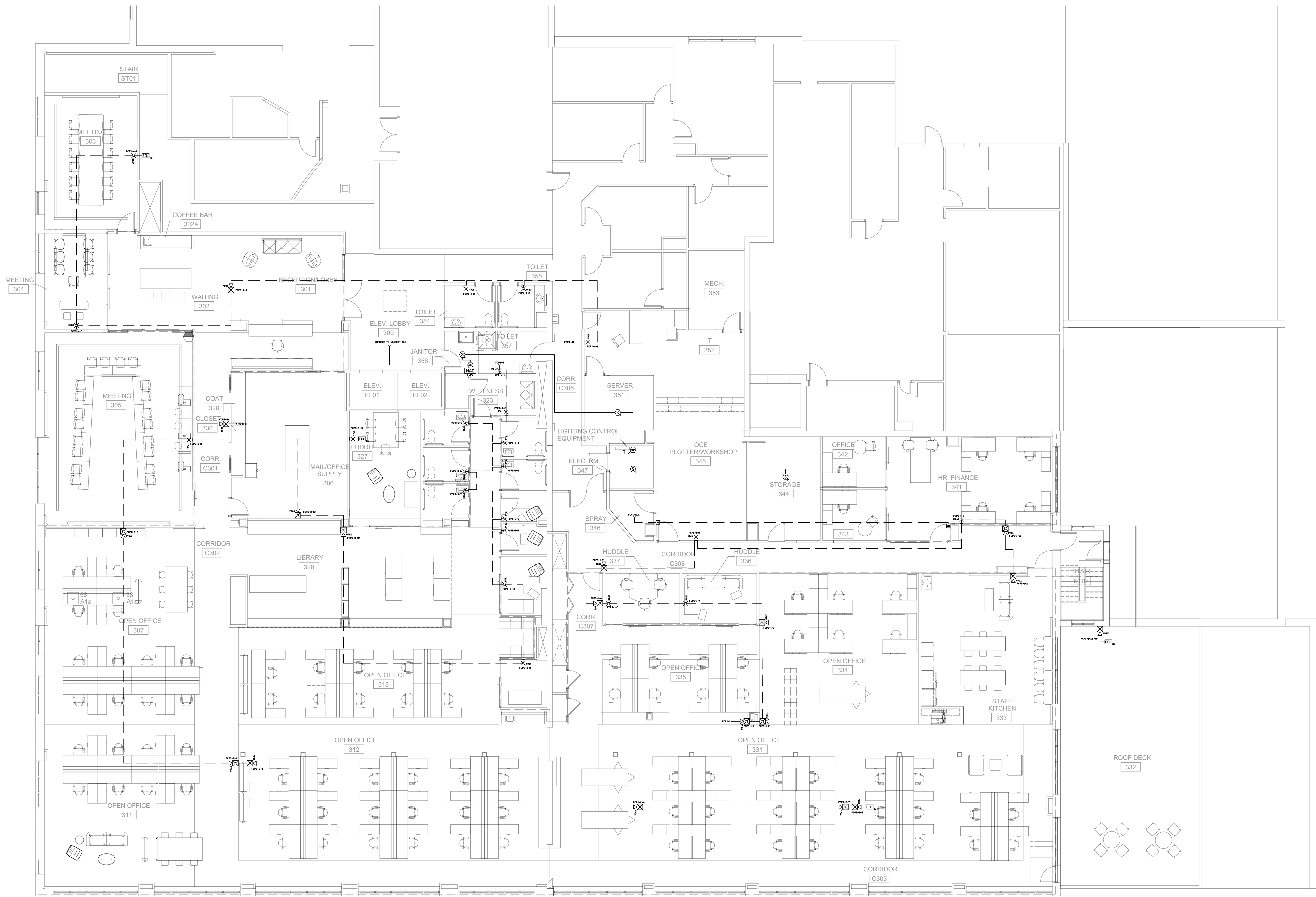


CUNNINGHAM SECURITY SYSTEMS

RISER AND CALCS



Reviewed for Code Compliance
 Permitting and Inspections Department
 Approved with Conditions
 03/16/2020

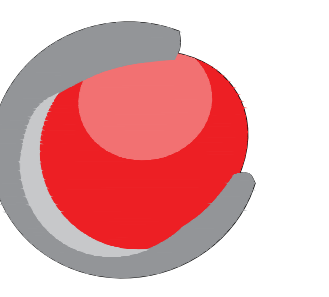


CITY/TOWN APPROVAL

NICET APPROVAL

Revisions	
0	Issued for review
1	
2	
3	

SMRT	10-29-2019	SMRT + ZS	1/8" = 1'-0"	75 Washington Avenue Portland, ME
DATE		AUTHOR	SCALE	



CUNNINGHAM
 SECURITY SYSTEMS

3RD FLR SMRT UPFIT

FA-2