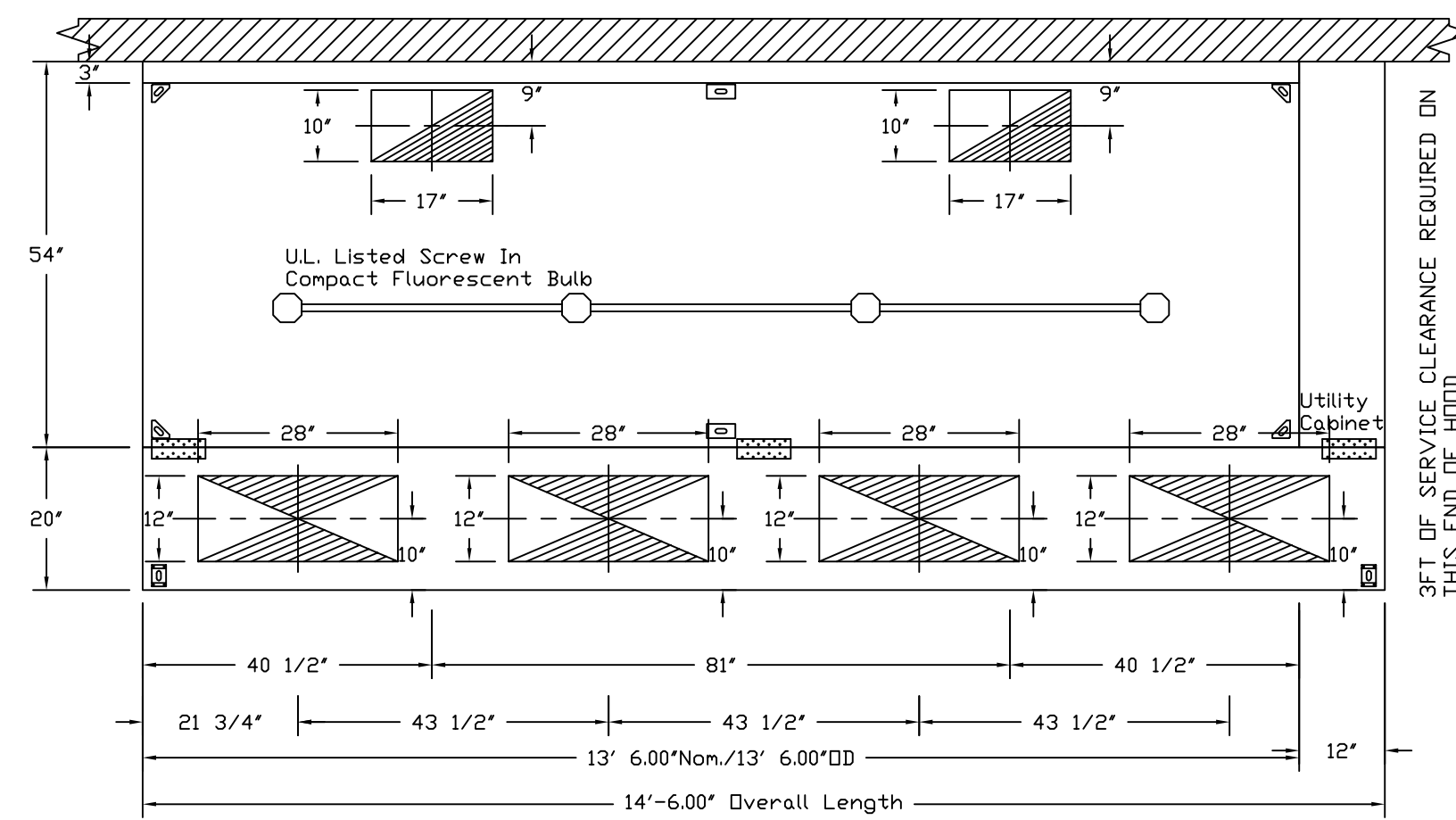


HOOD INFORMATION - Job#2319577												
HOOD NO.	TAG	MODEL	LENGTH	MAX. COOKING TEMP.	EXHAUST PLENUM				TOTAL SUPPLY CFM	HOOD CONSTRUCTION	HOOD CONFIN.	
					EXH. CFM	WIDTH	LENG.	DIA.			CFM	S.P.
1		5424 ND-2-PSP-F	13' 6.00'	600 Deg.	3712	10"	17"	1856	-0.474"	3341	430 SS	ALDNE

HOOD INFORMATION																
HOOD NO.	TAG	TYPE	QTY.	HEIGHT	LENGTH	EFFICIENCY @ 9 MICRONS	QTY.	TYPE	WIRE GUARD	LOCATION	UTILITY CABINETS			FIRE HOOD		
											TYPE	SIZE	MODEL #		SWITCHES	QUANTITY
1		SS Baffle with Handles	10	16"	16"	30%	4	Screw In Compact	ND	Right	Angul R-100		SC-21110FP	1 Light 1 Fan	YES	799 LBS

HOOD OPTIONS											
HOOD NO.	TAG	OPTION									
		1		RIGHT QUARTER END PANEL	23"	Top Width,	0"	Bottom Width,	23"	High	430
		LEFT QUARTER END PANEL	23"	Top Width,	0"	Bottom Width,	23"	High	430	SS	

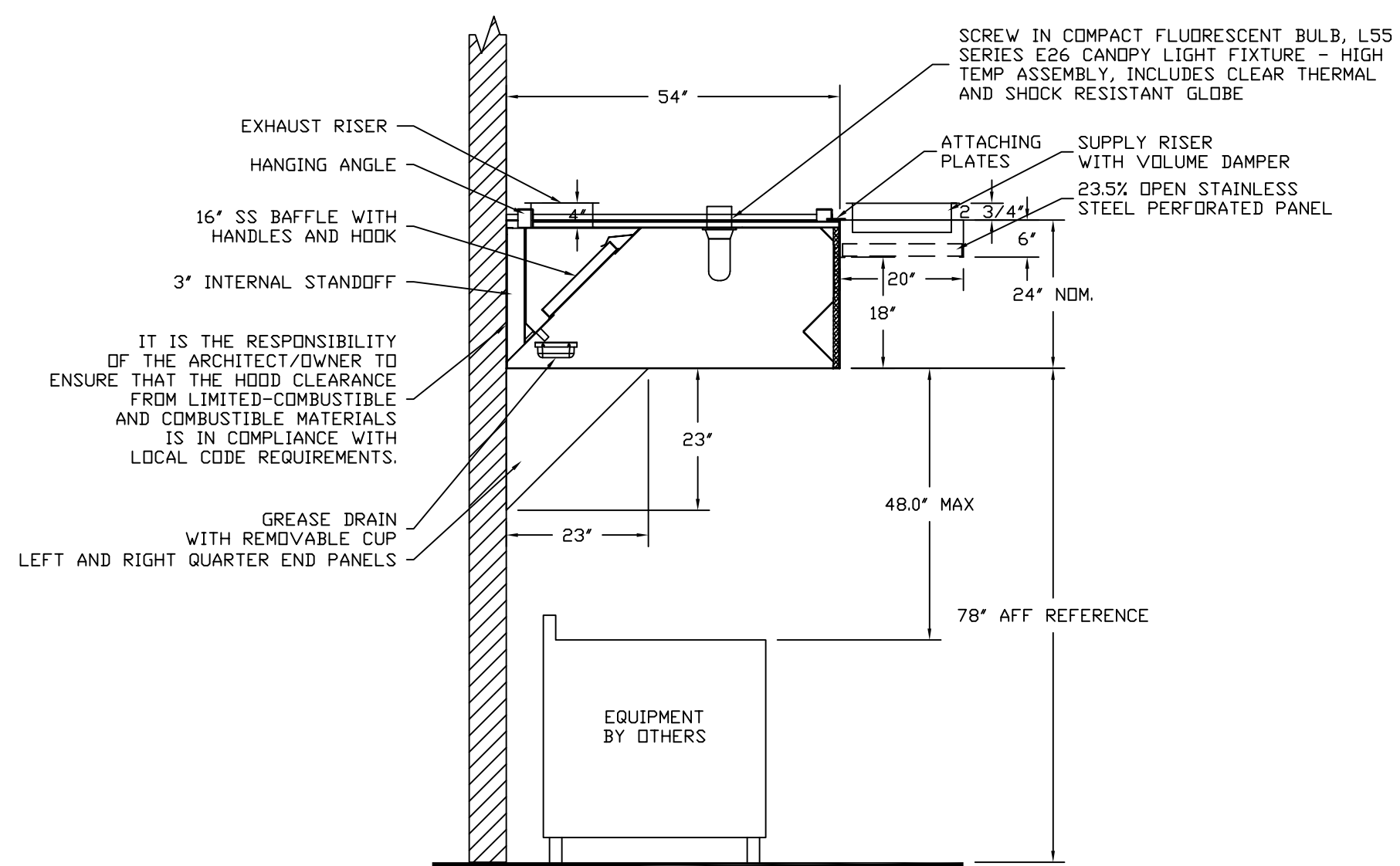
PERFORATED SUPPLY PLENUM(S)											
HOOD NO.	TAG	POS.	LENGTH	WIDTH	HEIGHT	TYPE	BISER(S)				
							WIDTH	LENG.	DIA.	CFM	S.P.
1		Front	174"	20"	6"	MUA	12"	28"	835	0.258"	
							12"	28"	835	0.258"	
							12"	28"	835	0.258"	
							12"	28"	835	0.258"	



PLAN VIEW - Hood #1
13' 6.00" LONG 5424ND-2-PSP-F
NOTE: Additional hanging angles provided for hoods 12' and longer.

CAPTIVEAIR

JOB 75 Washington Ave r1
 LOCATION BIDDEFORD, ME.
 DATE 6/24/2015 JOB # 2319577
 DWG # 1 DRAWN BY BFC-21
 REV: SCALE 3/8" = 1'-0"



SECTION VIEW - MODEL 5424ND-2-PSP-F
HOOD - #1

CAPTIVEAIR

JOB 75 Washington Ave r1
 LOCATION BIDDEFORD, ME.
 DATE 6/24/2015 JOB # 2319577
 DWG # 2 DRAWN BY BFC-21
 REV: SCALE 3/8" = 1'-0"

HOOD PLAN-NTS

HOOD ELEVATION-NTS

RESTROOM EXHAUST FAN INFORMATION

TAG	FAN MANUFACTURER/MODEL #	CFM	ESP.	RPM	HP	BHP	Ø	VOLT
EF-2	GREENHECK G-095-D	280	.5	1546	1/20	.06	1	120

HOOD EXHAUST FAN INFORMATION

TAG	FAN UNIT MODEL #	CFM	ESP.	RPM	H.P.	B.H.P.	Ø	VOLT	FLA	WEIGHT (LBS.)	SONES
EF-1	NCA24HPFA	3712	2.000	1067	3.000	2.0990	1	230	17.0	293	20

HOOD MUA FAN INFORMATION

TAG	FAN UNIT MODEL #	BLOWER	HOUSING	CFM	ESP.	RPM	H.P.	B.H.P.	Ø	VOLT	FLA	WEIGHT (LBS.)	SONES
MUA-2	A2-G12	G12	A2	3341	1.000	906	2.000	1.2870	1	230	12.5	392	27

FAN OPTIONS

FAN TAG	OPTION (Qty. - Descr.)
EF-1	1 - Grease Box
	1 - 3 Year Extended Motor Warranty
	1 - Extra Set of Belts
	1 - Fan Base Ceramic Seal - For Grease Ducts
MUA-2	1 - Hinge Kit (HD) - Ships Loose for Curb Supplied by Others
	1 - Full Grating For Untempered Fans
	1 - 3 Year Extended Motor Warranty
EF-2	1 - Gravity Backdraft Damper for Size 2 Housing
	1 - 80' intake extension
	1 - Gravity damper
	1 - Speed control

FAN ACCESSORIES

FAN TAG	EXHAUST				SUPPLY		
	GREASE CUP	GRAVITY DAMPER	WALL MOUNT	SIDE DISCHARGE	GRAVITY DAMPER	MOTORIZED DAMPER	WALL MOUNT
EF-1	YES				YES		
MUA-2							
EF-2		YES					

CURB ASSEMBLIES

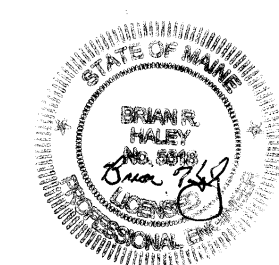
NO.	WEIGHT	ITEM	SIZE
EF-1	43 LBS	Curb	31.500"W x 31.500"L x 24.000"H Flat Vented
MUA-2	42 LBS	Curb	31.000"W x 31.000"L x 20.000"H Flat
EF-2	20 LBS	Curb	15.5"W x 15.5"L x 12.0"H Flat

FAN SCHEDULES

INSTALLATION NOTES

- INSULATE ALL SUPPLY DUCTWORK WITH 2" FSK DUCT WRAP.
- INSULATE ALL GREASE DUCT FROM THE LOCATION NOTED ON M-1 TO THE ROOF PENETRATION WITH TWO (2) LAYERS OF 1/2" 3M FIRE BARRIER DUCT WRAP 615+.
- DESIGN ALL HOOD MAKEUP AND HVAC DUCTWORK AT 2" W.G. AND SEAL PER SMACNA CLASS B SEALING STANDARDS.
- PAINT ALL VISIBLE DUCTWORK BEHIND GRILLES FLAT BLACK.
- KITCHEN HOOD EXHAUST DUCTWORK SHALL BE CONTINUOUSLY WELDED 16 GAUGE STEEL INSTALLED IN ACCORDANCE WITH NFPA 96 REQUIREMENTS. MAINTAIN A MINIMUM OF 18" TO COMBUSTIBLE CONSTRUCTION.
- INSTALL GREASE DUCT ACCESS PANELS AS INDICATED AND CONSTRUCT PER NFPA 96. OPENINGS TO BE A MINIMUM OF 1 1/2" UP FROM THE BOTTOM OF THE DUCT.

FOR CONSTRUCTION



HALEY'S METAL SHOP, INC.
 539 ELM STREET
 BIDDEFORD, MAINE 04005
 PH: 207-284-8571, FAX: 207-284-9597

DATE: 07/30/15

SCALE: NTS

ROUSTABOUT RESTAURANT
PORTLAND, MAINE
DETAILS AND SCHEDULES

HVAC
M-3

