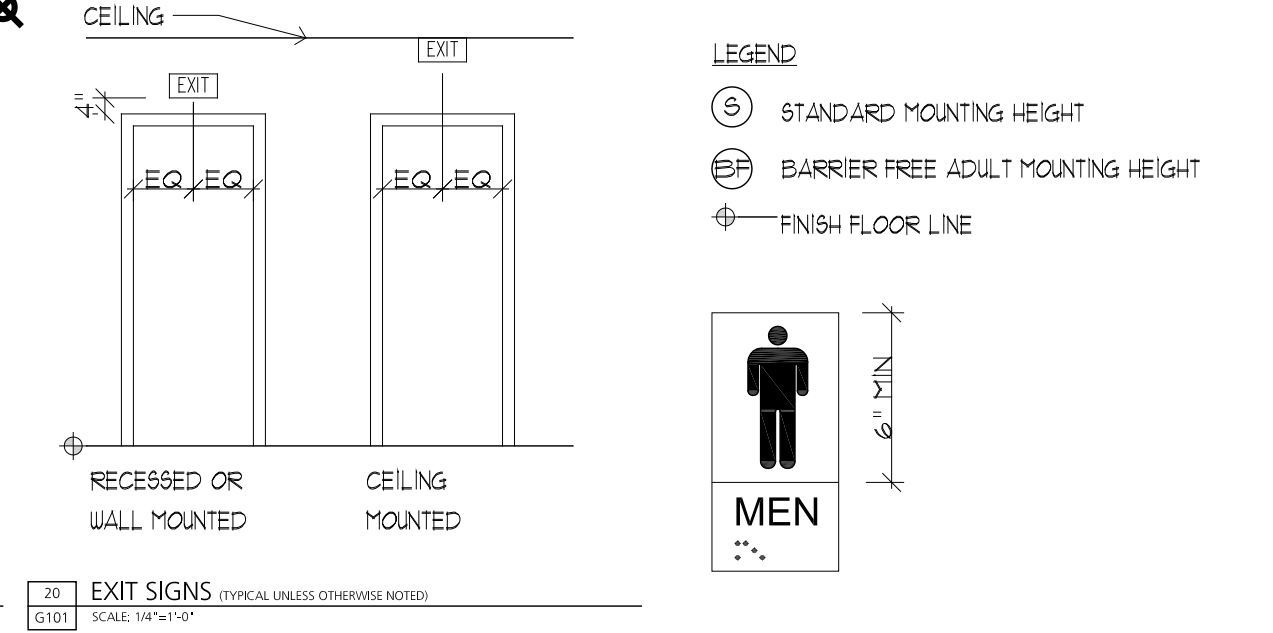
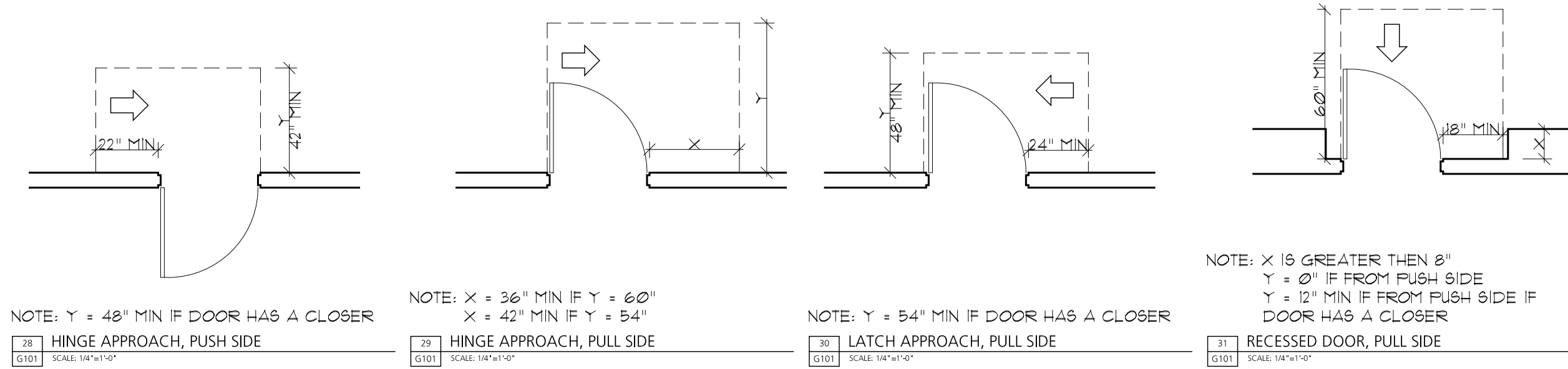
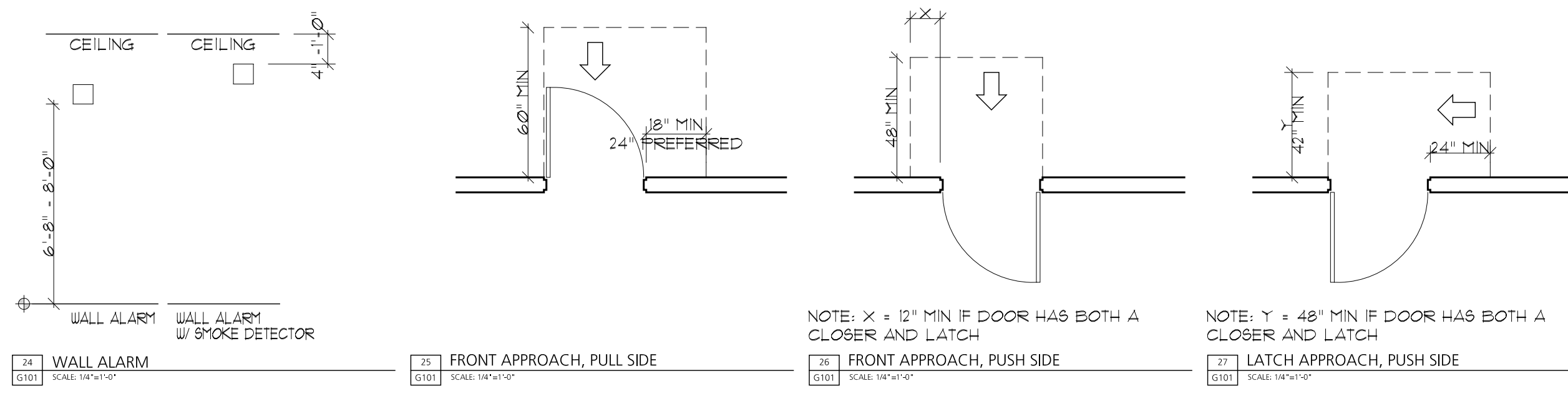
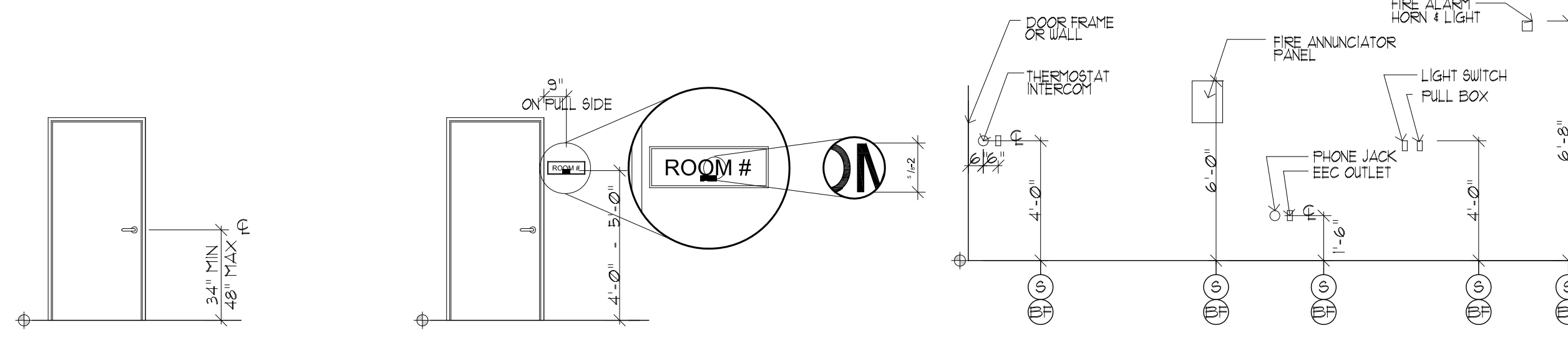
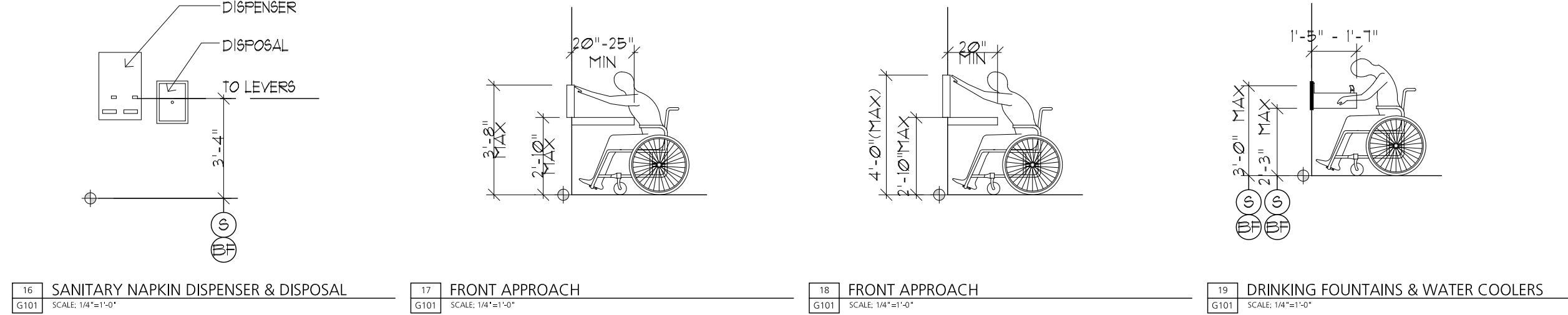
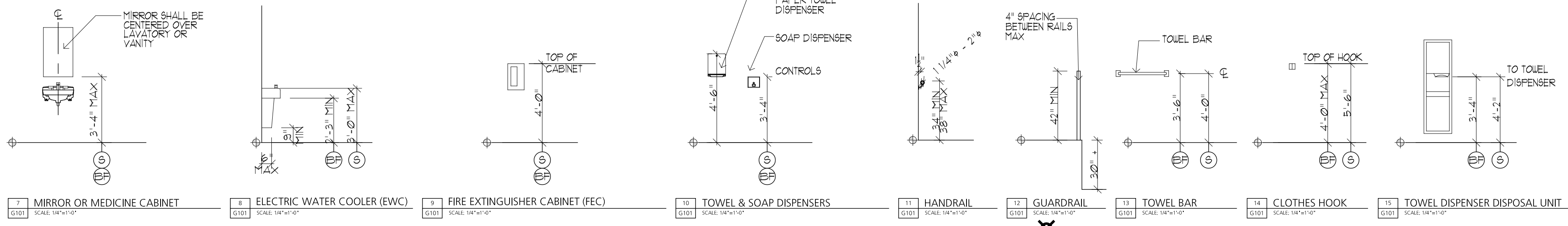
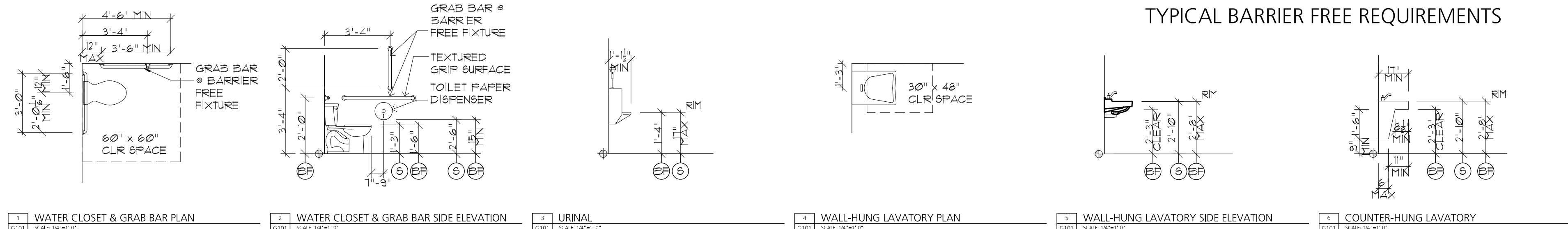


TYPICAL BARRIER FREE REQUIREMENTS



NOTES FOR BARRIER-FREE ACCESSIBILITY:

- PROPOSED WORK SHALL COMPLY WITH APPLICABLE REQUIREMENTS OF ANSII A117.1 AND ADA 2010.
- CONTROLS AND OPERATING MECHANISMS SHALL BE OPERABLE WITH ONE HAND AND SHALL NOT REQUIRE TIGHT GRASPING, PINCHING OR TWISTING OF THE WRIST.
- ACCESSIBLE ROUTES TO BE PROVIDED BETWEEN FACILITIES ON THE GROUND FLOOR, PROVIDING A MINIMUM OF 36 INCHES OF WIDTH ALONG THE ACCESSIBLE ROUTE AND A MINIMUM OF 32 INCHES OF WIDTH AT DOORWAYS.
- PROPOSED STORAGE FACILITIES SUCH AS CABINETS, SHELVES, CLOSETS AND DRAWERS SHALL COMPLY WITH APPLICABLE REQUIREMENTS.
- CLEAR FLOOR SPACE OF MINIMUM OF 30 INCHES BY 48 INCHES IS PROVIDED FOR APPROACH TO ALL STORAGE FACILITIES.
- HARDWARE FOR STORAGE FACILITIES SHALL BE OPERABLE WITH ONE HAND AND SHALL NOT REQUIRE TIGHT GRASPING, PINCHING OR TWISTING OF THE WRIST.
- MOUNT ALL FIXTURES AT BARRIER FREE HEIGHT UNLESS INDICATED ON PLAN BY A SYMBOL, A SYMBOL AT ANY ROOM SHALL INCLUDE ONE OF ANY FIXTURE AND ACCESSORY WITHIN THE ROOM.
- PROVIDE SOLID WOOD BLOCKING AS REQUIRED FOR MOUNTING HEIGHTS. SEE MANUFACTURER'S SPECIFICATIONS FOR ITEM TO BE MOUNTED. GRAB BARS/TOILET PAPER DISPENSER/TOP AND BOTTOM OF MEDICINE CABINET/MIRROR/PUBLIC TELEPHONE/TOILET AND SOAP DISPENSER/CLOTHES HOOK/TOWEL BAR/SANITARY NAPKIN DISPENSER & DISPOSAL/CLOSET SHELF AND ROD/TOILET PARTITION/HAND DRYER & ANY OTHER ITEM REQUIRING BLOCKING FOR WALL MOUNTING PURPOSES.

SPACE ALLOWANCES AND REACH RANGES:

- A CLEAR FLOOR SPACE OF 30" x 48" SHALL BE PROVIDED FOR FORWARD AND PARALLEL APPROACHES.
- 60" DIAMETER SPACE SHALL BE PROVIDED FOR WHEELCHAIR TURNING.

DOORS:

- DOORWAYS SHALL HAVE A MINIMUM CLEAR OPENING OF 32" WITH THE DOOR OPEN TO 90 DEGREES MEASURED BETWEEN THE FACE OF THE DOOR AND THE STOP FOR CLEARWAY WIDTH AND DEPTH.
- FOR MANEUVERING CLEARANCES AT DOORS SEE FIGURES 25 THRU 31.
- FOR DOOR LEVER HARDWARE HEIGHT SEE FIGURE 21.

WATERCLOSETS:

- THE HEIGHT OF WATERCLOSETS SHALL BE 11" TO 19" ABOVE THE FLOOR TO THE TOP OF THE TOILET SEAT. FOR HEIGHT, CONFIGURATIONS AND GRAB BARS SEE FIGURES 5 & 6.

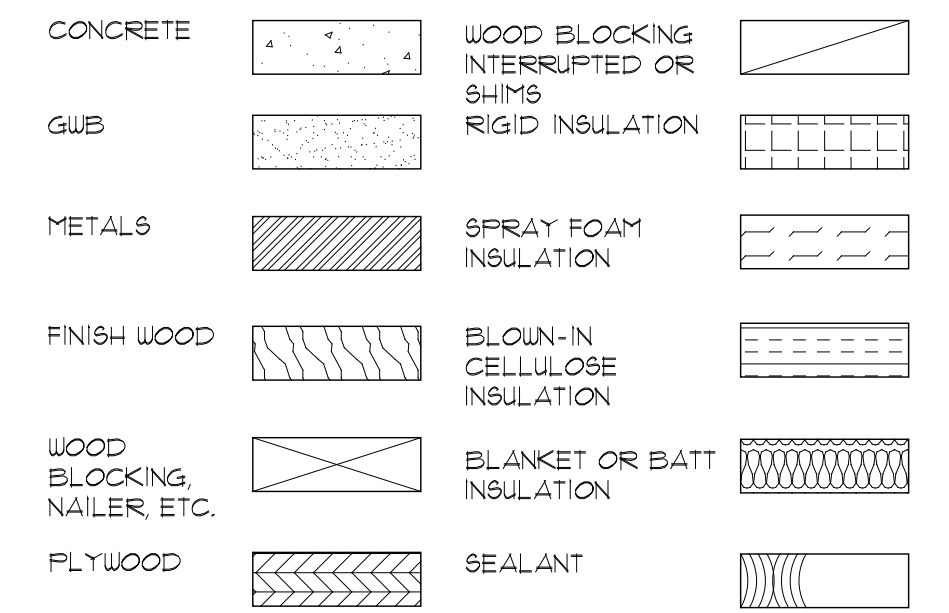
LAVATORIES AND SINKS:

- LAVATORIES SHALL BE MOUNTED WITH A CLEARANCE OF 29" FROM THE FLOOR TO THE BOTTOM OF THE APRON. KNEE AND TOE CLEARANCE TO COMPLY WITH FIGURES 2 & 3.
- SINKS SHALL BE MOUNTED WITH THE COUNTER OR RIM NO HIGHER THAN 34" FROM THE FLOOR.
- A CLEAR FLOOR SPACE OF 30" x 48" SHALL BE PROVIDED IN FRONT OF A LAVATORY OR SINK TO ALLOW A FORWARD APPROACH AND TO COMPLY WITH FIGURE 4.
- HOT WATER AND DRAIN PIPES UNDER LAVATORIES OR SINKS SHALL BE INSULATED, OR OTHERWISE COVERED TO PREVENT CONTACT.

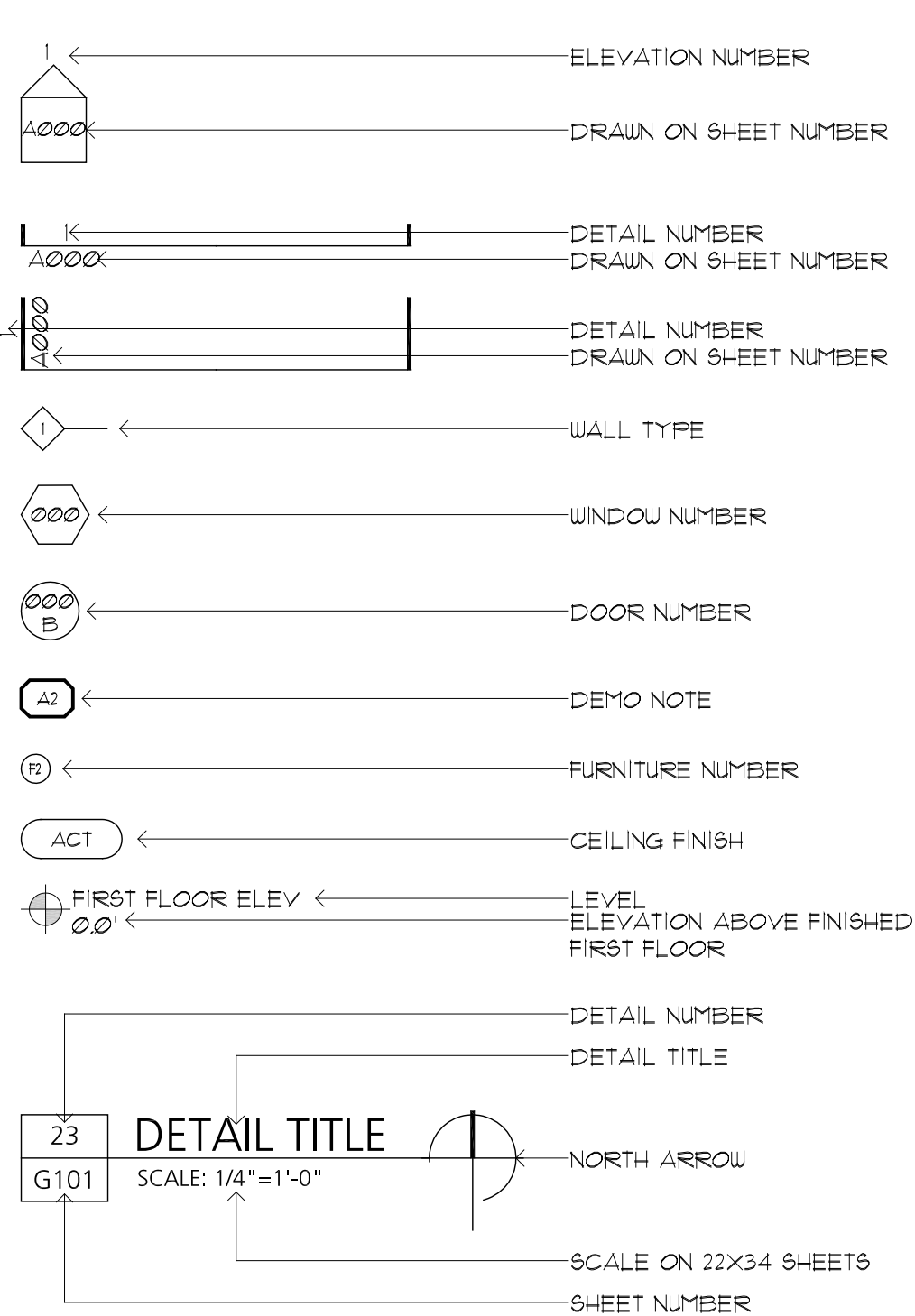
STANDARD ABBREVIATIONS

ABV	ABOVE	S	SOUTH
ACT, ATC	ACOUSTIC CEILING TILE	SEL	SEALANT
AF	ABOVE FINISHED FLOOR	S4	SHEATHING
ALT	ALTERNATE	SHTH	SHEATHING
APPROX	APPROXIMATE	SIM	SIMILAR
ARCH	ARCHITECT (URAL)	SLR	SEALER
AUTO	AUTOMATIC	SPEC	SPECIFICATION (S) OR PROJECT MANUAL
		SQ	SQUARE
BD	BOARD	ST, ST.L, S/S	STAINLESS STEEL
BF	BARRIER FREE (ADA)	ST	STEEL
BLK	BLOCK (ING)	STD	STANDARD
BOT	BOTTOM	STGL	SAFETY GLASS
BRG	BEARING	STOR, STO.	STORAGE
BTW	BETWEEN	SUSP	SUSPENDED
		SYM	SYMMETRY (ICAL)
CABT	CABINET	SYM	SYNTHETIC
CEM	CEMENT	SYS	SYSTEM
CHT	CEILING HEIGHT		
CL, CLO	CLOSET	TBD	TO BE DETERMINED
CLG	CEILING	TBS	TO BE SELECTED BY CONTRACTING OFFICER
CLR	CLEAR (ANCE)	TEMP	TEMPERED OR TEMPORARY
CMU	CONCRETE MASONRY UNIT	TGL	TEMPERED GLAZING
COL	COLUMN	THRESH	THRESHOLD
CONC	CONCRETE	THK	THICK (NESS)
CONT	CONTINUOUS OR CONTINUE	TOL	TOLERANCE
CORR	CORRESPONDING	TYP	TYPICAL
CT	CERAMIC TILE		
CTR	COUNTER	UC	UNDERCUT UNLESS NOTED OTHERWISE
C.O.	CONTRACTING OFFICER	UNO	UNLESS NOTED OTHERWISE
		VERT	VERTICAL
DEMO	DEMOLISH, DEMOLITION	VIF	VERIFY IN FIELD
DIM	DIMENSION	VIN	VINYL
DIV	DIVISION	VINB	VINYL BASE
DN	DOWN	VNR	VENEER
DOC	DOCUMENT	VT	VINYL TILE
DR	DOOR		
DTL	DETAIL	W	WEST
DWG	DRAWING	WB	WOOD BASE
		WC	WATER CLOSET
E	EAST	WD	WOOD
EA	EACH	W/D	STACKING WASHER & DRYER
ELEC	ELECTRIC (AL)	WDW	WINDOW
EL, ELEV	ELEVATION	WH	WALL HUNG
EMER	EMERGENCY	WIC	WALK IN CLOSET
EQ	ELECTRICAL PANEL (SEE 'E'-DWGS)	W/O	WITHOUT
EQ	EQUAL	WR	WATER RESISTANT
EQUIP	EQUIPMENT	WSCT	WAINSCOT
EXIST	EXISTING		
EXP, EXPSD	EXPOSED		
EXT	EXTERIOR		
FA	FIRE ALARM		
FD	FLOOR DRAIN		
FIN	FINISH (ED)		
FLR	FLOOR (ING)		
FND	FOUNDATION		
FR	FIRE RATED		
FRAM'G	FRAMING		
FUR	FURRED (ING)		
GA	GAGE, GAUGE		
GB	GRAB BAR		
GC	GENERAL CONTRACT (OR)		
GL	GLASS, GLAZING		
GT	GROUT		
GV	GALVANIZED		
GYP BD, GWB	GYPSTUM WALL BOARD		
HDR	HEADER		
HGT	HEIGHT		
HORIZ	HORIZONTAL		
HRD	HARDWARE		
HT	HEIGHT		
HTG	HEATING		
HYAC	HEATING/VENTILATING/AIR CONDITIONING		
HWD	HARD WOOD		
INCL	INCLUDE (D), (ING)		
INDV	INDIVIDUAL		
INSUL	INSULATION		
INT	INTERIOR		
JC	JANITOR'S CLOSET		
JT	JOINT		
KEC	KITCHEN EQUIPMENT CONTRACTOR		
KITTE	KITCHENETTE		
LAM	LAMINATE (D)		
LAV	LAVATORY		
LT	LIGHT		
MAS	MASONRY		
MAX	MAXIMUM		
MBR	MEMBER		
MECH	MECHANIC (AL)		
MED	MEDIUM MANUFACTURE (ER)		
MFR	MINIMUM		
MIR	MIRROR		
MM	MILLIMETER (S)		
M.O.	MASONRY OPENING		
MTD	MOUNTED		
MTL	METAL		
MTRL	MATERIAL (S)		
MU	MICROWAVE		
N	NORTH		
NOM	NOMINAL		
NTS	NOT TO SCALE		
OC	ON CENTER		
OH	OVERHEAD		
O.H.	OPPOSITE HAND		
PART	PARTITION		
PLAM	PLASTIC LAMINATE		
PLS	PLASTER		
PLUMB	PLUMBING		
PNT, PTD	PAINTED		
PLD	PLYWOOD		
QT	QUARRY TILE		
RCP	REFLECTED CEILING PLAN		
REF	REFERENCE		
REFR / REF.	REFRIGERATOR		
REG	REGISTER		
REQ'D	REQUIRED		
RES, RESIL	RESILIENT		
RETUR	RETURN		
REV	REVISION (S), REVISED		
RM	ROOM		
RO	ROUGH OPENING		
ROW	RIGHT OF WAY		

MATERIAL DESIGNATION



GRAPHIC SYMBOLS



ABBREVIATIONS, SYMBOLS, ADA NOTES & FIXTURE HEIGHTS

WASHINGTON STREET
PORTLAND, MAINE

G101

ISSUED FOR REVIEW:
OWNER REVIEW
DRAWN BY:
B+W
Copyright 2016 Barba + Wheelock

SHEET SIZE:
22" x 34"
DATE:
09/06/2016