

© 2016 RYAN SENATORE ARCHITECTURE

NISSEN BUILDING - COURTYARD
 75 WASHINGTON STREET
 PORTLAND MAINE



RYAN SENATORE ARCHITECTURE
 866 CONGRESS STREET
 PORTLAND, MAINE 04101
 207-656-6414
 senatorearchitecture.com

CONSULTANTS:
 STRUCTURAL
 Structural Integrity
 77 Oak Street
 Portland, ME 04101
 207-774-4614

REVISIONS:

DATE: AUGUST 31, 2016

PROJECT No. 1523.C

DRAWN BY: JPF

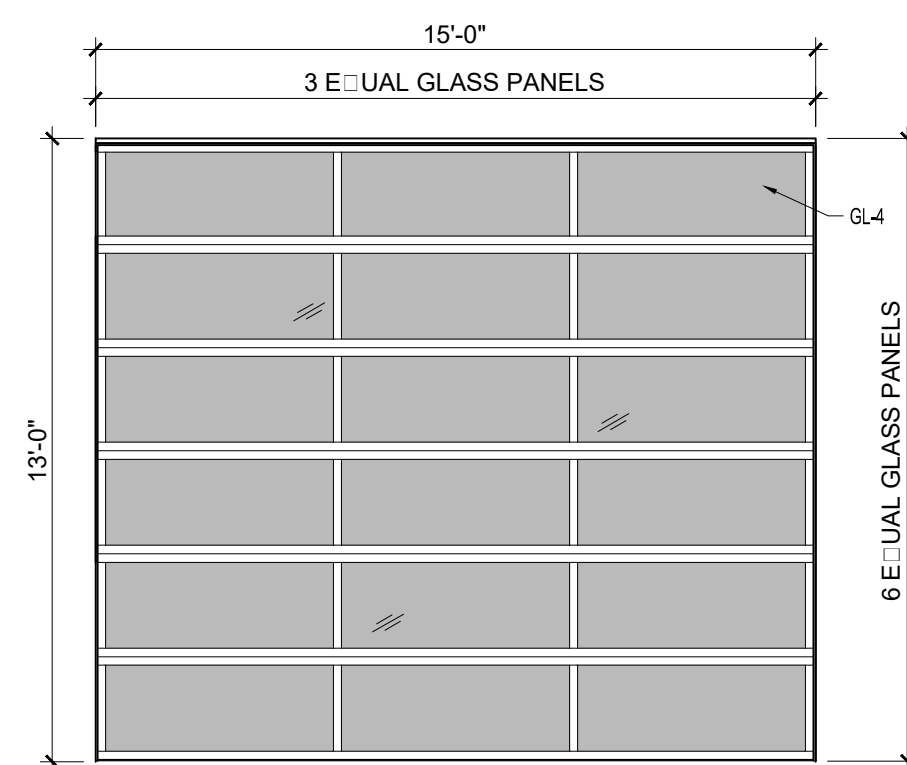
CHECKED BY: RJS

SCALE: AS NOTED

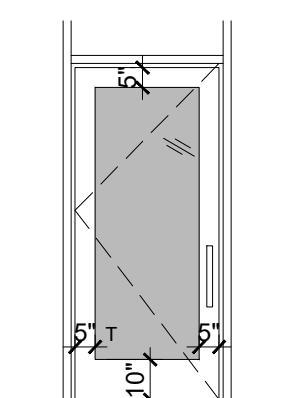
SHEET TITLE:
 DOOR AND WINDOW SCHEDULE

A7-0

DOOR SCHEDULE

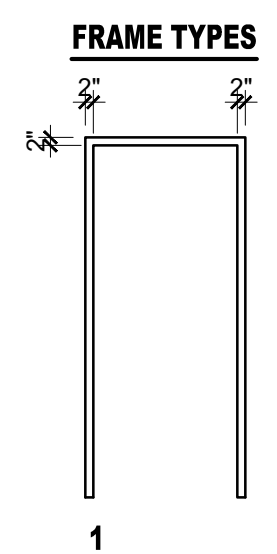


A OVERHEAD



B

1 DOOR TYPES
14" x 14"



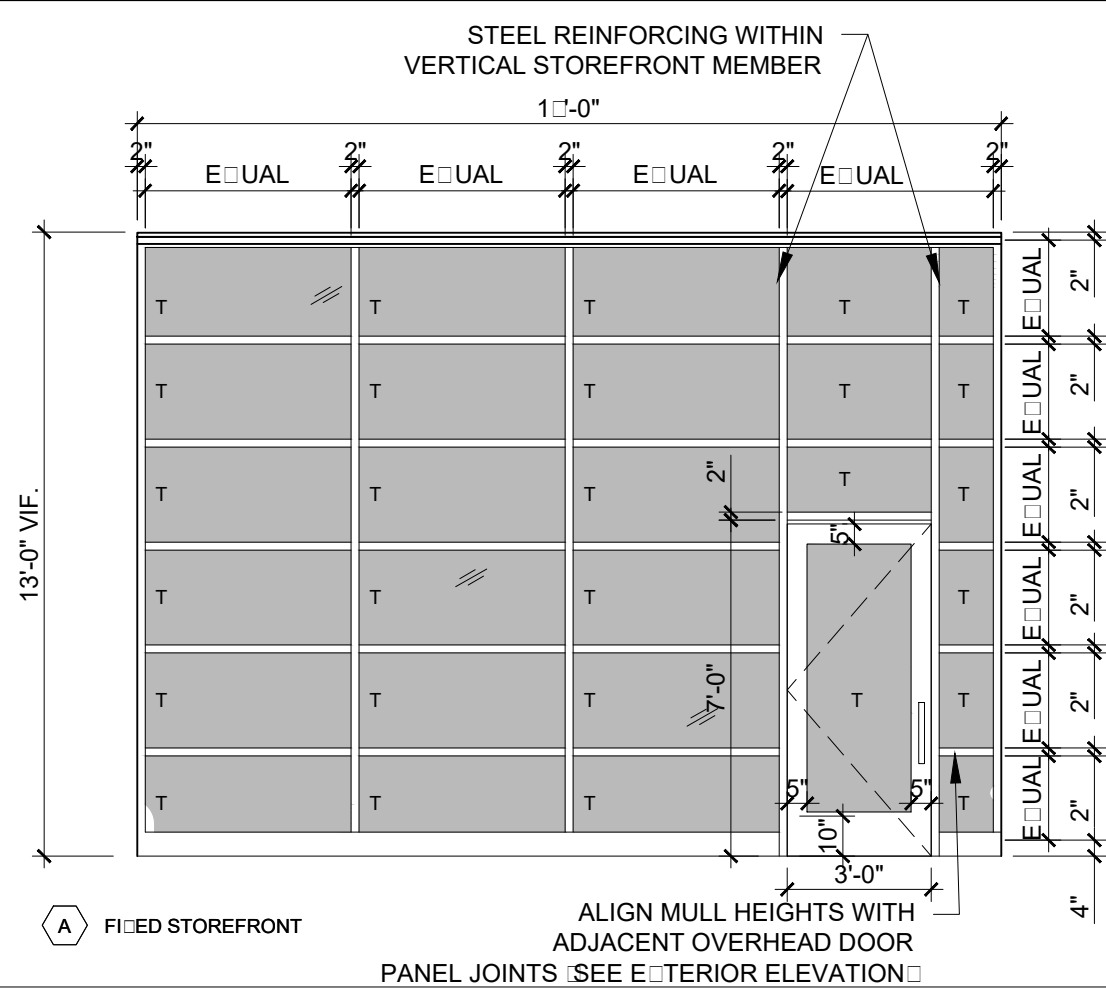
FRAME TYPES

NOTES:
 1. EXTERIOR DOOR JAMBS TO BE SEALED TO THEIR ROUGH OPENINGS USING LOW EXPANDING FOAM, BACKER ROD OR CAULKING.
 2. ALL EXTERIOR DOORS TO BE WEATHER STRIPPED

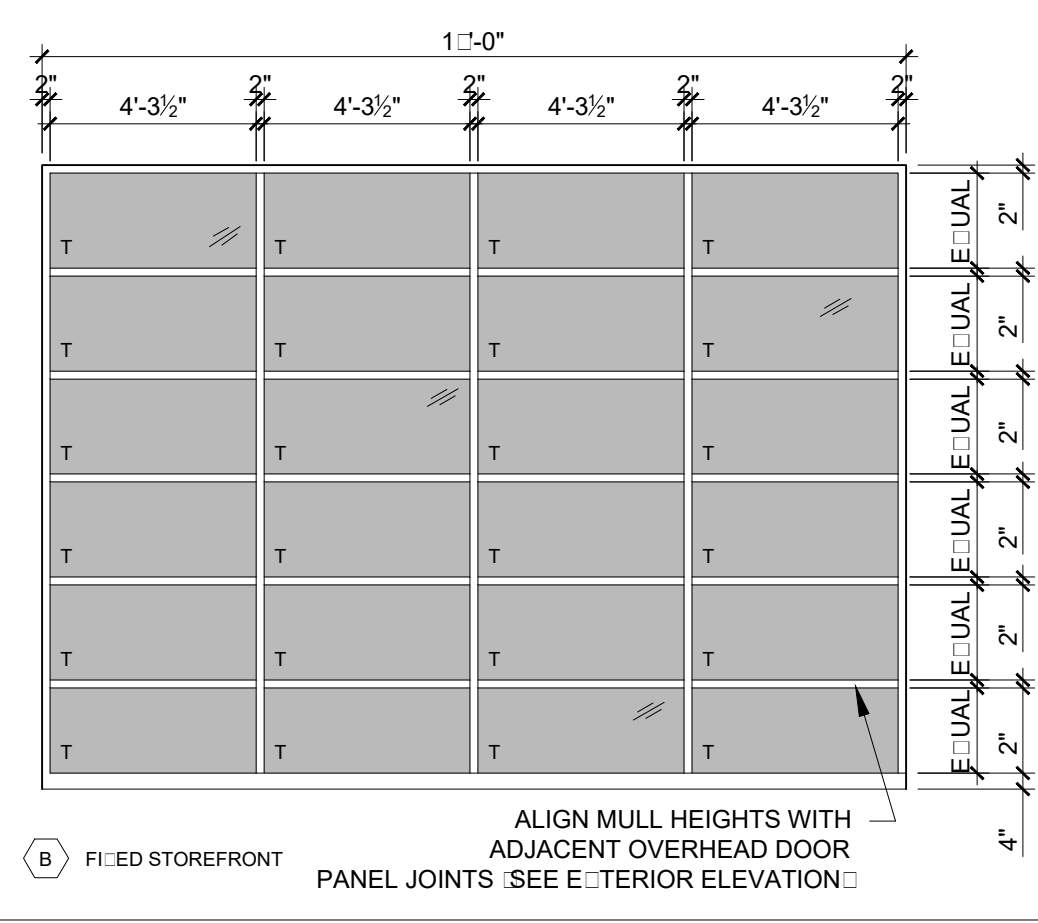
GLAZING SCHEDULE	
KEY	GLAZING TYPE
GL-1	INSULATED CLEAR GLAZING
GL-2	FIRE RATED INSULATED GLAZING
GL-3	CLEAR TEMPERED GLASS
GL-4	CLEAR INSULATED TEMPERED GLASS
GL-5	FIRE RATED GLAZING

DOOR SCHEDULE																			
DOOR NO.	TYPE	DOOR			FRAME					GENERAL									
		WIDTH	HEIGHT	THICKNESS	MATERIAL	FINISH	INSULATED	TYPE	MATERIAL	THRESHOLD	HEAD	JAMB	SILL	CLOSER	FASTENING (NAILS)	HARDWARE	HARDWARE KEY	ABBREVIATION KEY	
110.1	A	15'-0"	13'-0"	1-3/4"	AL	ANO	Y	-	AL	-	-	-	Y	-	-	-	OVERHEAD DOOR WITH AUTOMATIC OPERATOR, BY OVERHEAD DOOR, S21 SERIES, FINISH TO MATCH ADJACENT STOREFRONT		
110.2	B	3'-0"	7'-0"	1-3/4"	AL	ANO	Y	-	AL	-	-	-	Y	-	-	-			
111.1	EX	3'-0"	7'-0"	-	-	-	-	-	-	-	-	-	-	-	-	-	EXISTING DOOR, PROVIDE PANIC HARDWARE		
111.2	EX	3'-0"	7'-0"	-	-	-	-	-	-	-	-	-	-	-	-	-	EXISTING DOOR, PROVIDE PANIC HARDWARE		
120.1	EX	3'-0"	7'-0"	-	-	-	-	-	-	-	-	-	-	-	-	-	EXISTING DOOR, PROVIDE PANIC HARDWARE		

WINDOW SCHEDULE



A FIXED STOREFRONT
2 WINDOW TYPES
14" x 14"



B FIXED STOREFRONT
ALIGN MULL HEIGHTS WITH ADJACENT OVERHEAD DOOR
PANEL JOINTS - SEE EXTERIOR ELEVATION

LEGEND:
 T = TEMPERED GLASS
 F = FIXED

NOTES:
 1. CONTRACTOR TO VERIFY ALL ROUGH OPENINGS
 2. ALL EXTERIOR GLAZING INSULATED
 3. FRAME OPENINGS WITH ELEVATIONS
 4. SEAL WINDOW TO ROUGH OPENINGS WITH LOW EXPANDING FOAM INSULATION - SEE DETAILS

WINDOW SCHEDULE										
KEY	ACTION	ROUGH OPENING (WxH) V.I.F.	R.O. HEAD	HEIGHT FROM SUBFLOOR	DETAILS			MATERIAL	FINISH	REMARKS
					HEAD	JAMB	SILL			
A	STORE	18'-0" x 13'-0"	-	-	-	-	-	AL	ANO	OLDCASTLE SERIES 3000 THERMAL MULTIPANE CENTER SET - THERMALLY BROKEN STOREFRONT WINDOW SYSTEM - PROVIDE STEEL REINFORCING WITHIN MEMBERS AS REQUIRED
B	STORE	18'-0" x 13'-0"	-	-	-	-	-	AL	ANO	OLDCASTLE SERIES 3000 THERMAL MULTIPANE CENTER SET - THERMALLY BROKEN STOREFRONT WINDOW SYSTEM - PROVIDE STEEL REINFORCING WITHIN MEMBERS AS REQUIRED

STOREFRONT INFORMATION
1. ALL STOREFRONT TO BE THERMALLY BROKEN WITH INSULATED GLAZING UNITS WITH LOW-E COATING ARGON FILLED UNITS
2. TEMPER ALL GLASS AS REQUIRED BY BUILDING CODE
3. PROVIDE SUB SILLS WITH DRAINED PANS WITH END AND BACK DAMS, PROVIDE COMPRESSION HEAD SLIP TRACKS
4. PROVIDE FINISH TO MATCH ADJACENT EXISTING STOREFRONT, PROVIDE SAMPLE AND SHOP DRAWINGS FOR OWNER AND ARCHITECT APPROVAL PRIOR TO ORDER
5. FOR STOREFRONT FRAME GEOMETRY AND ARRANGEMENTS SEE EXTERIOR BUILDING ELEVATIONS
6. G.C. TO FIELD MEASURE ALL STOREFRONT UNITS PRIOR TO ORDER
7. PROVIDE STANDARD HEAD COMPENSATING RECEPTORS DEFLECTION HEAD