

© 2016 RYAN SENATORE ARCHITECTURE

NISSEN BUILDING - COURTYARD
75 WASHINGTON STREET
PORTLAND MAINE



RYAN SENATORE
ARCHITECTURE
365 CONGRESS STREET
PORTLAND, MAINE 04101
207-650-6414
senatorearchitecture.com

CONSULTANTS:
STRUCTURAL:
Structural Integrity
77 Oak Street
Portland, ME 04101
207-774-4614

REVISIONS:

DATE: AUGUST 31, 2016

PROJECT No. 1523.C

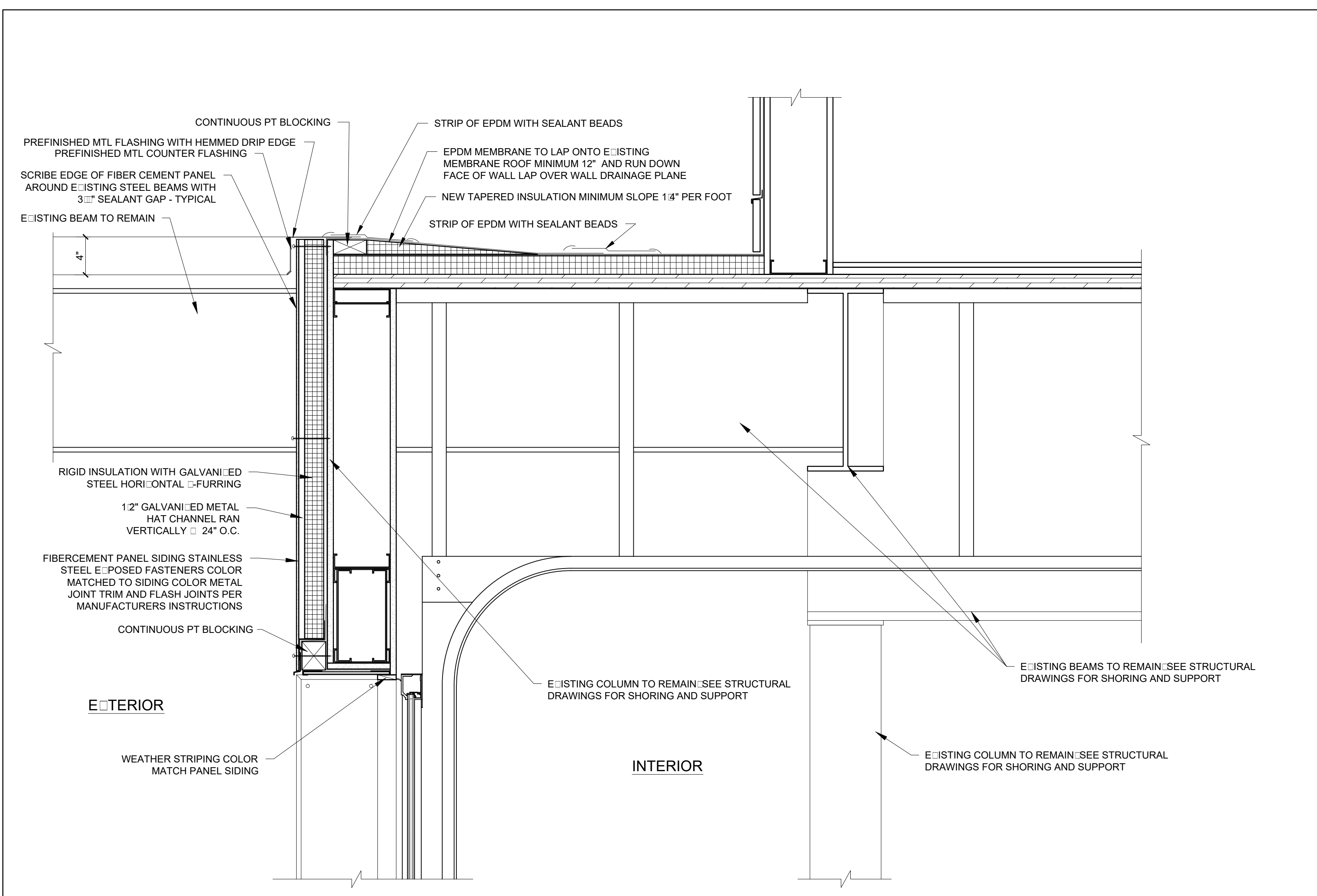
DRAWN BY: JPF

CHECKED BY: RJS

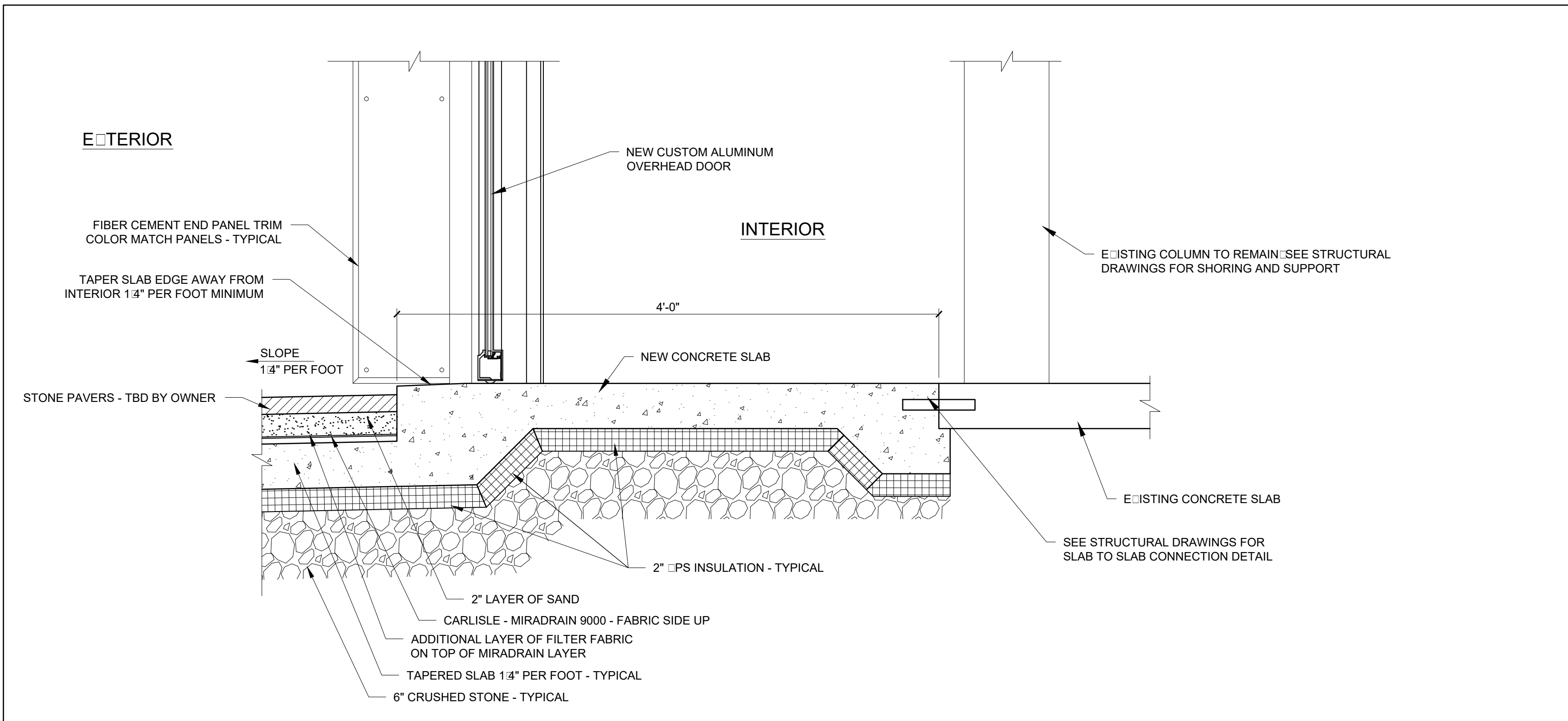
SCALE: AS NOTED

SHEET TITLE:
DETAILS

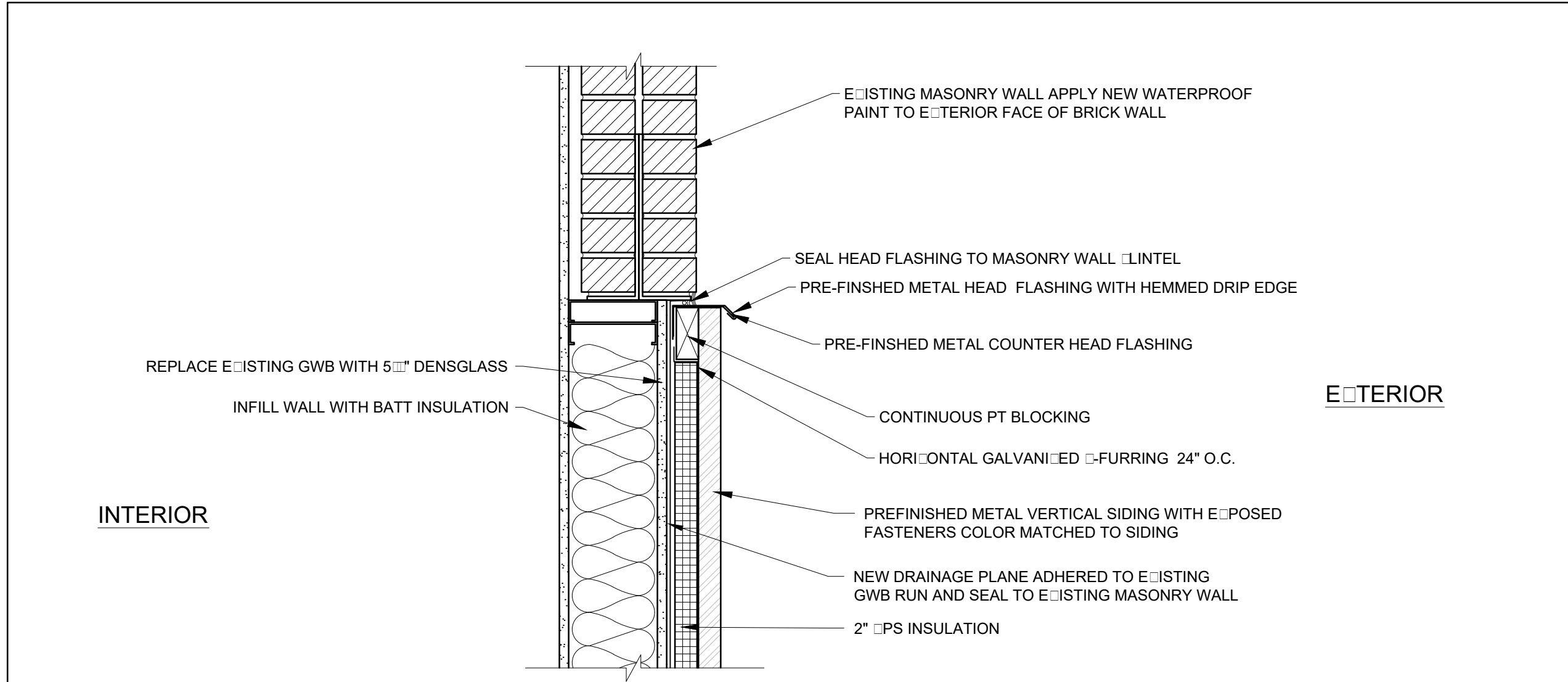
A5-1



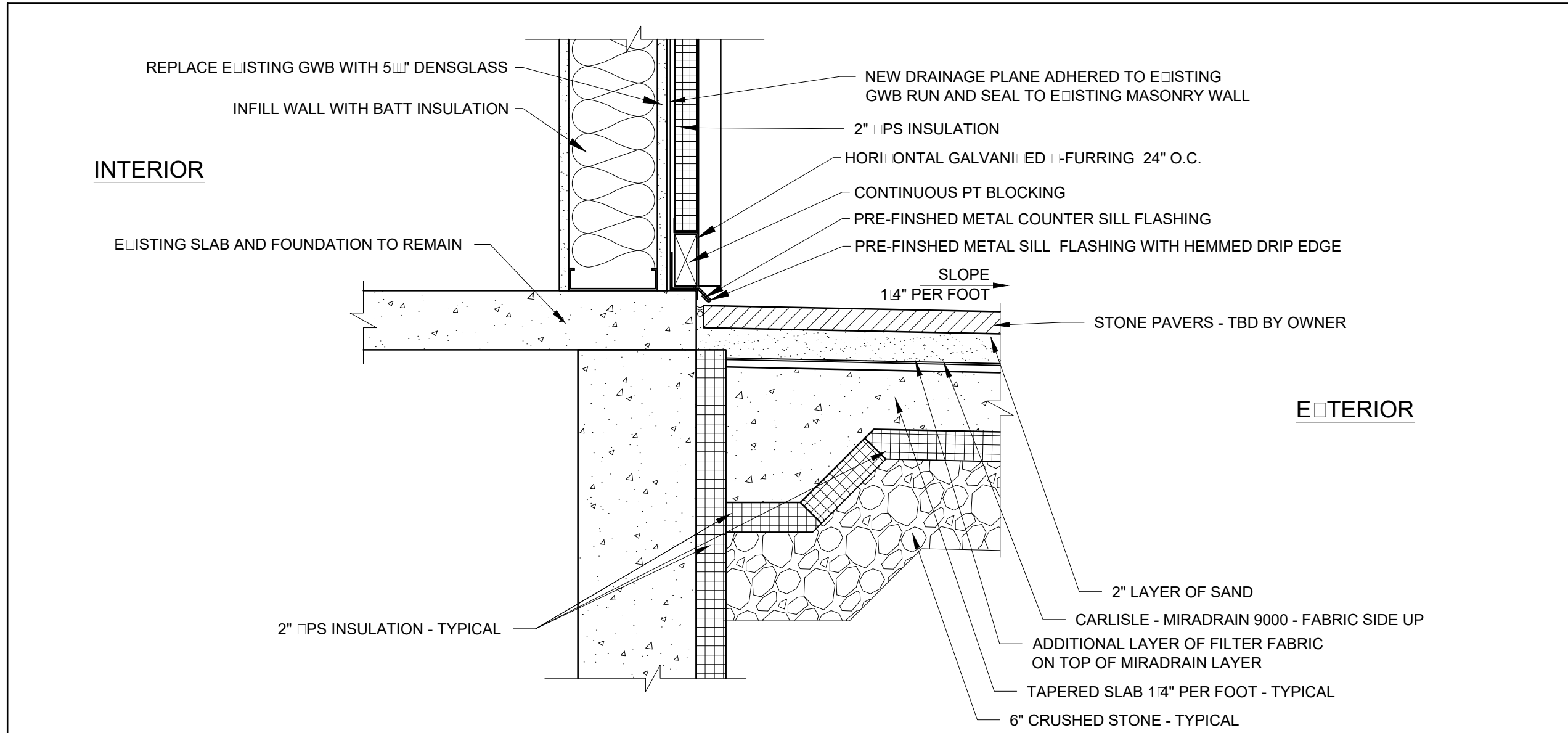
2 OVERHEAD DOOR SECTION DETAIL AT HEADER LOCATION
1/12" = 1'-0"



1 OVERHEAD DOOR SECTION DETAIL AT SILL LOCATION
1/12" = 1'-0"



4 WALL INFILL HEADER SECTION DETAIL
1/12" = 1'-0"



3 WALL INFILL SILL SECTION DETAIL
1/12" = 1'-0"