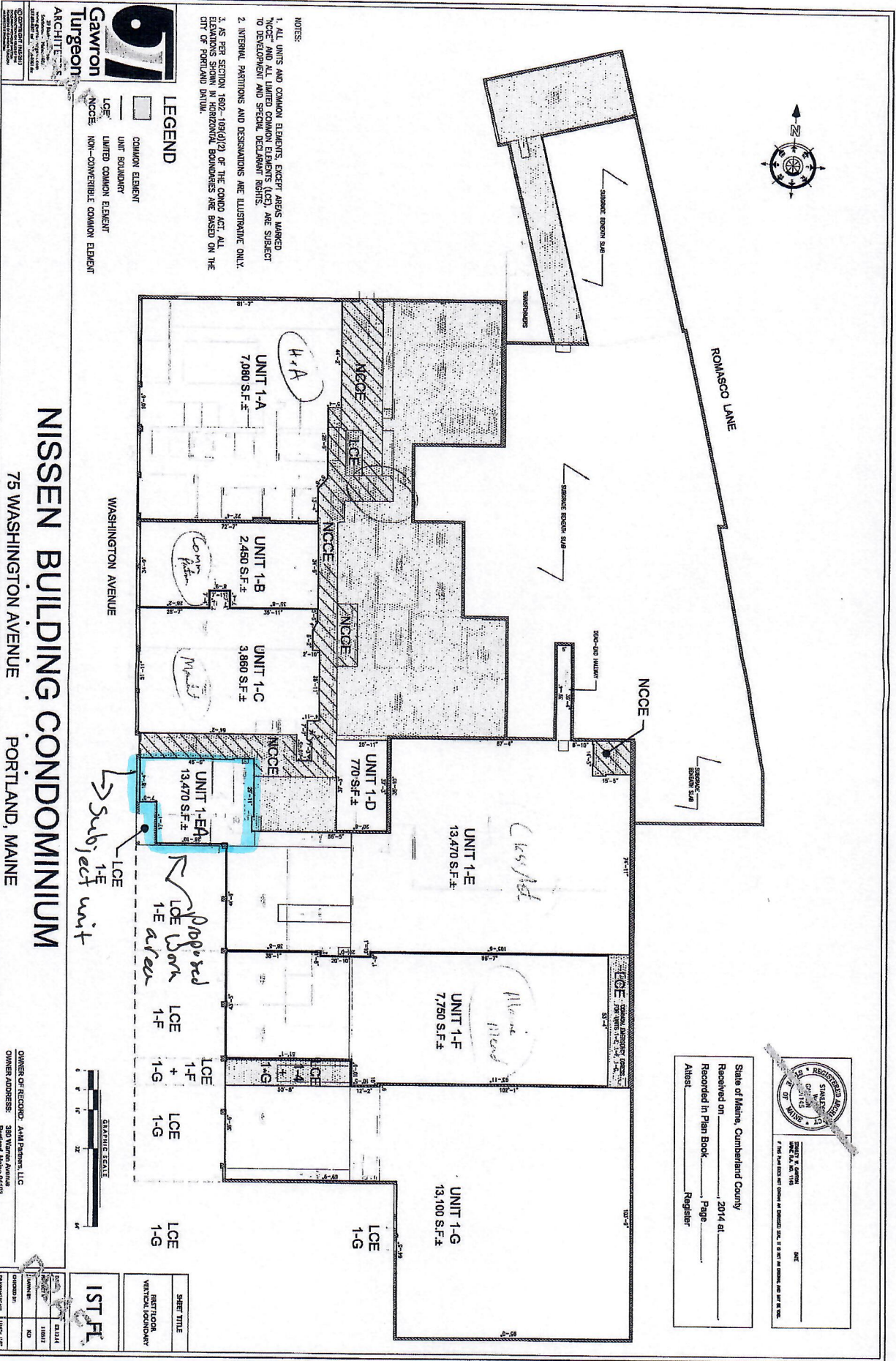


Key Plan



91
Gawton Turgeon
 ARCHITECTS
 1000 Main Street, Suite 200
 Portland, ME 04101
 Telephone: 603.761.1111
 Fax: 603.761.1112
 www.gawton-turgeon.com

LEGEND

□ COMMON ELEMENT

— UNIT BOUNDARY

▨ LCE - LIMITED COMMON ELEMENT

▩ NCCCE - NON-CONVERTIBLE COMMON ELEMENT

NOTES:

1. ALL UNITS AND COMMON ELEMENTS, EXCEPT AREAS MARKED "NCCCE" AND ALL LIMITED COMMON ELEMENTS (LCE), ARE SUBJECT TO DEVELOPMENT AND SPECIAL DECLARATION RIGHTS.

2. INTERNAL PARTITIONS AND DESIGNATIONS ARE ILLUSTRATIVE ONLY.

3. AS PER SECTION 1692, 1694(a)(2) OF THE CONDO ACT, ALL COMMONS SPACES IN HORIZONTAL BOUNDARIES ARE BASED ON THE S.I. OF PARAGRAPHS SHOWN.

NISSEN BUILDING CONDOMINIUM
 75 WASHINGTON AVENUE
 PORTLAND, MAINE

OWNER OF RECORD: AWH Partners, LLC
 OWNER ADDRESS: 380 Western Avenue
 Portland, Maine 04103

NO.	DATE	REVISIONS
1	10/13/14	ISSUED FOR PERMIT
2	11/13/14	ISSUED FOR RECORD
3	03/13/14	ISSUED FOR RECORD

State of Maine, Cumberland County
 Received on _____, 2014 at _____
 Recorded in Plan Book _____ Page _____
 Attest: _____ Registrar



3/13/14