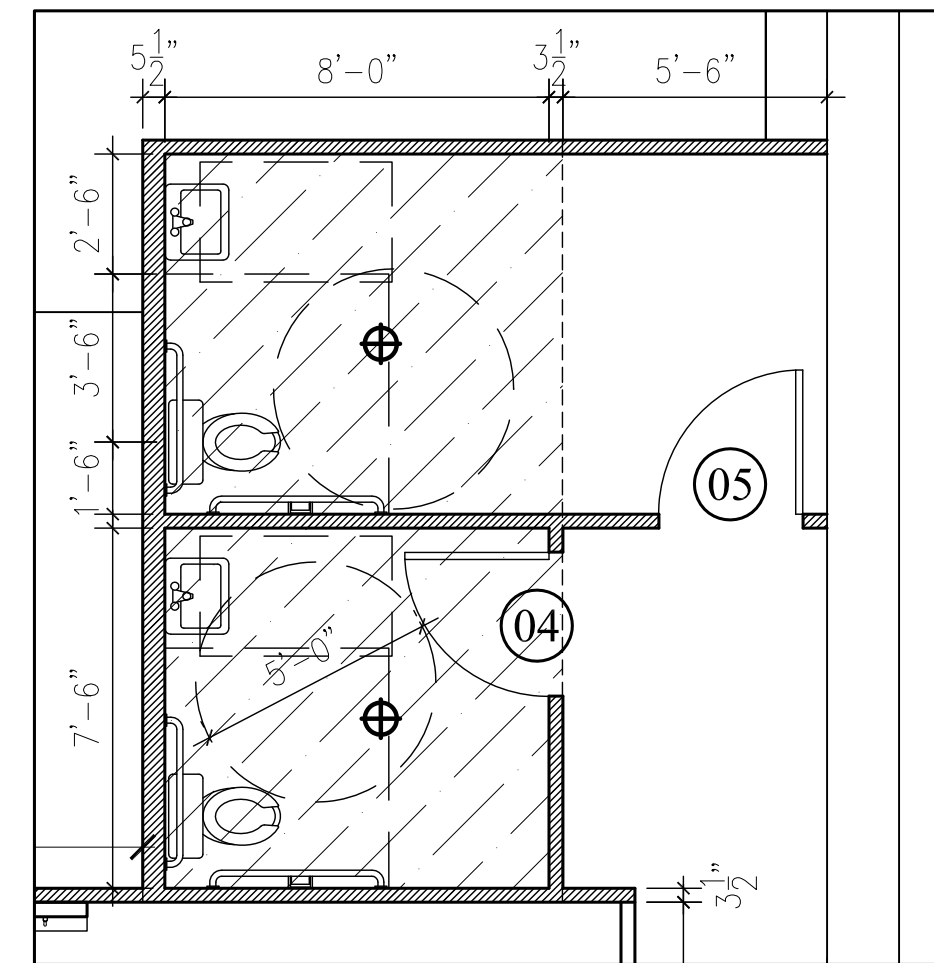
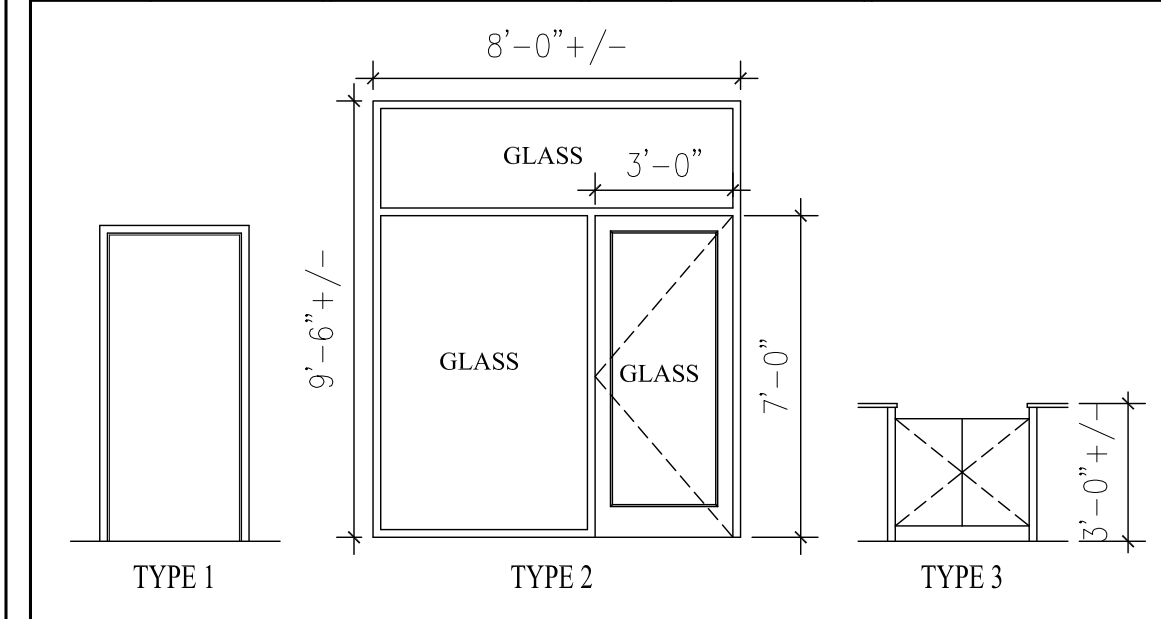
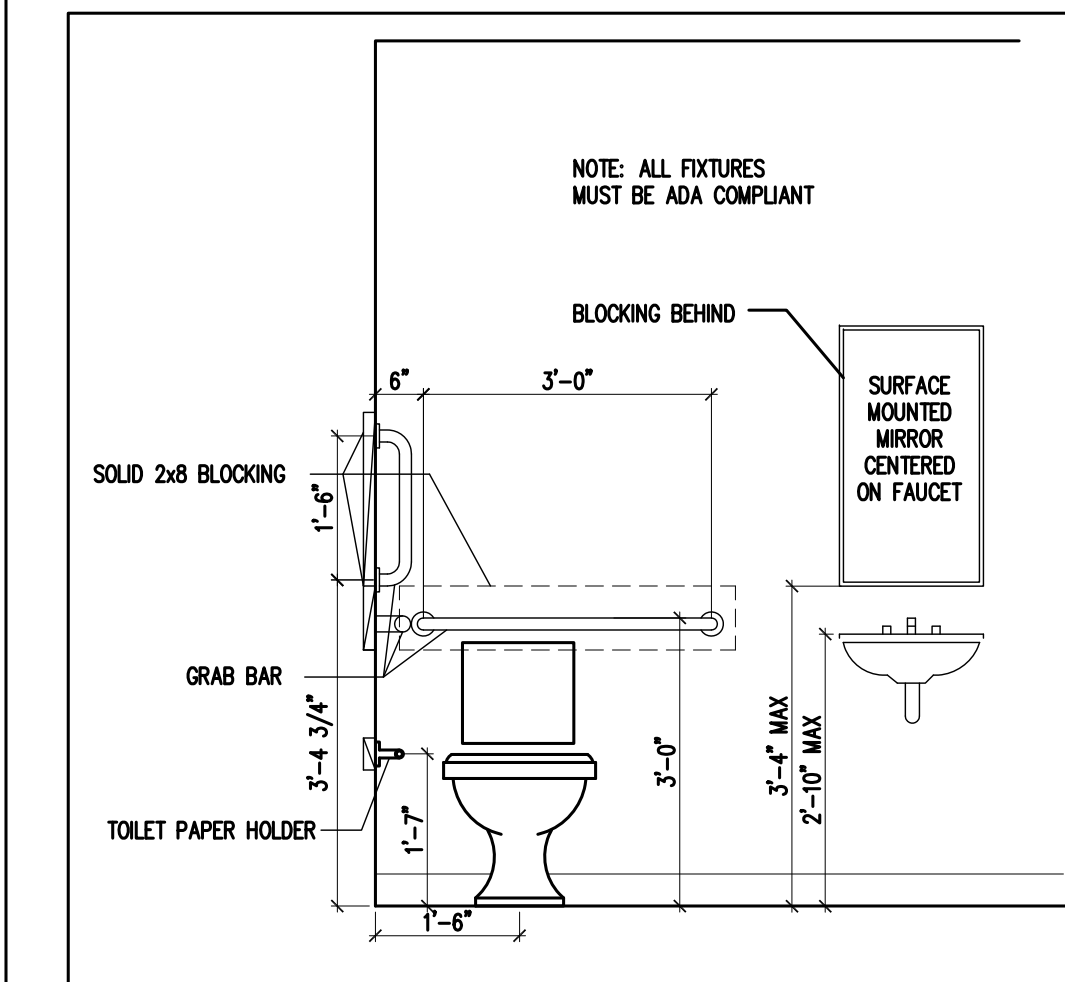


*** DOOR SCHEDULE ***

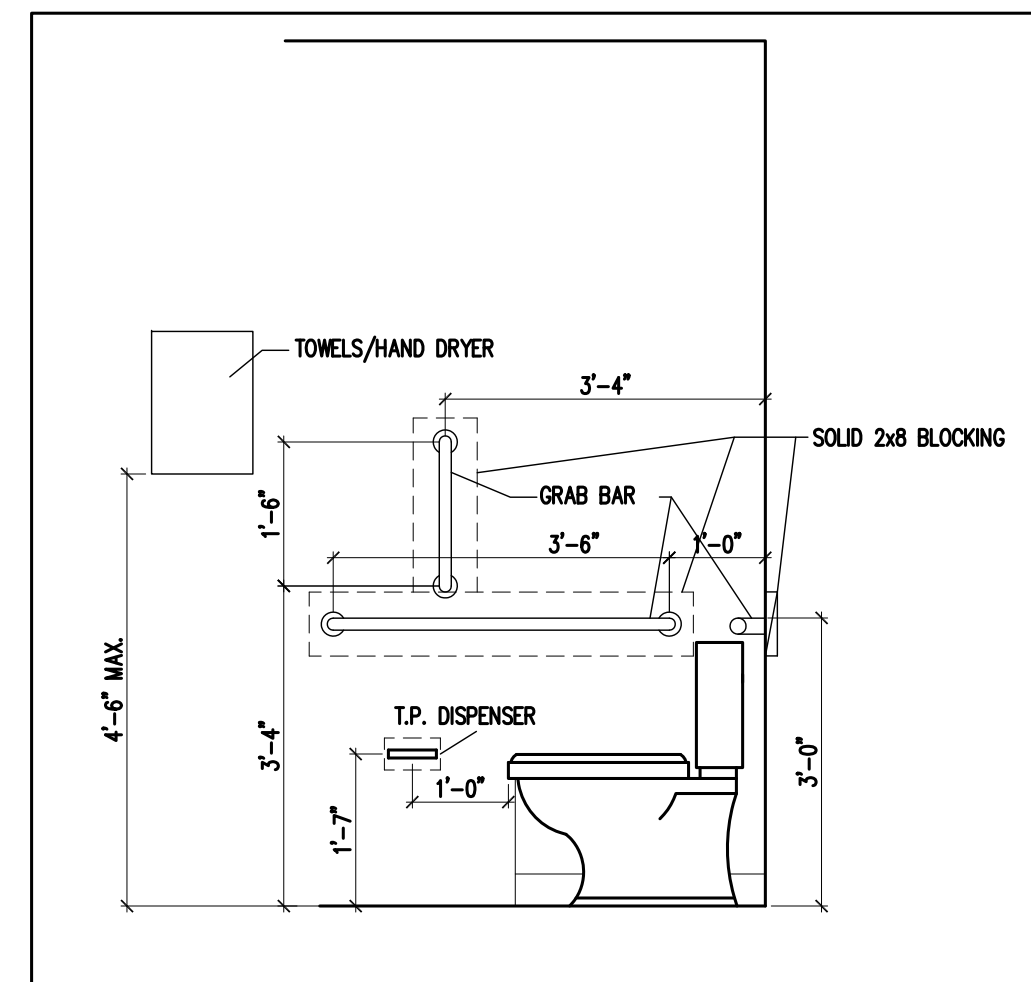
DOOR No.	NEW / EXISTING	SIZE W x H x T	DOOR		HARDWARE	FRAME Material	RATING	REMARKS
			Type	Material				
01	NEW	3'-0" x 7'-0" x 1 3/4"	2	Alum. Glass	Push Pull Hardware, Weather Stripping, Alum Thresh	Alum		Aluminum Store Front System
02	DEMO	3'-0" x 6'-8" x 1 3/4"	1	Metal				Prep opening for infill
03	EXISTING	3'-0" x 6'-8" x 1 3/4"	1	Insul. Metal	Lever Handle, Closer	Metal		
04	NEW	3'-0" x 6'-8" x 1 3/4"	1	S. C. Oak Slab	Lever Handle, Kick Plate, Closer	Wood		
05	NEW	3'-0" x 6'-8" x 1 3/4"	1	S. C. Oak Slab	Lever Handle, Kick Plate, Closer	Wood		
06	NEW	(2) 1'-6" x 2'-4" x 1"	3	Wood	Double Swing Spring Hinges	Wood		Saloon Style Door
07	NEW	(2) 1'-6" x 2'-4" x 1"	3	Wood	Double Swing Spring Hinges	Wood		Saloon Style Door
08	EXISTING	3'-0" x 6'-8" x 1 3/4"	1	Hollow Metal	Lever Handle, Closer	Metal	1 HR	
09	EXISTING	3'-0" x 6'-8" x 1 1/2"	1	H.C. Wood	Knob	Wood		
10	EXISTING	3'-0" x 6'-8" x 1 3/4"	1	Insul. Metal	Lever Handle, Closer	Metal		
11	EXISTING	3'-0" x 6'-8" x 1 3/4"	1	Hollow Metal	Lever Handle, Closer	Metal		



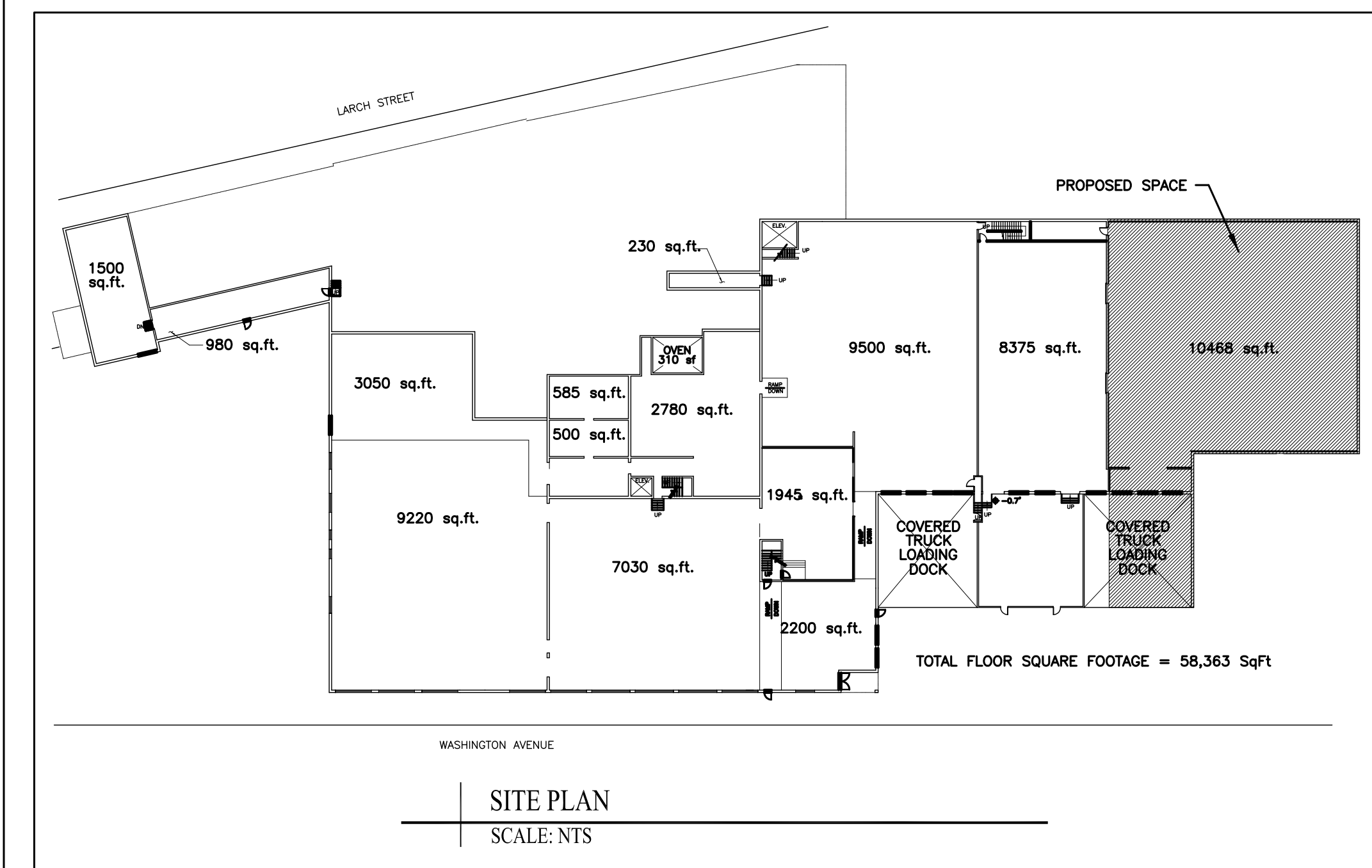
2 | BATHROOM PLAN
SCALE: 1/4"=1'-0"



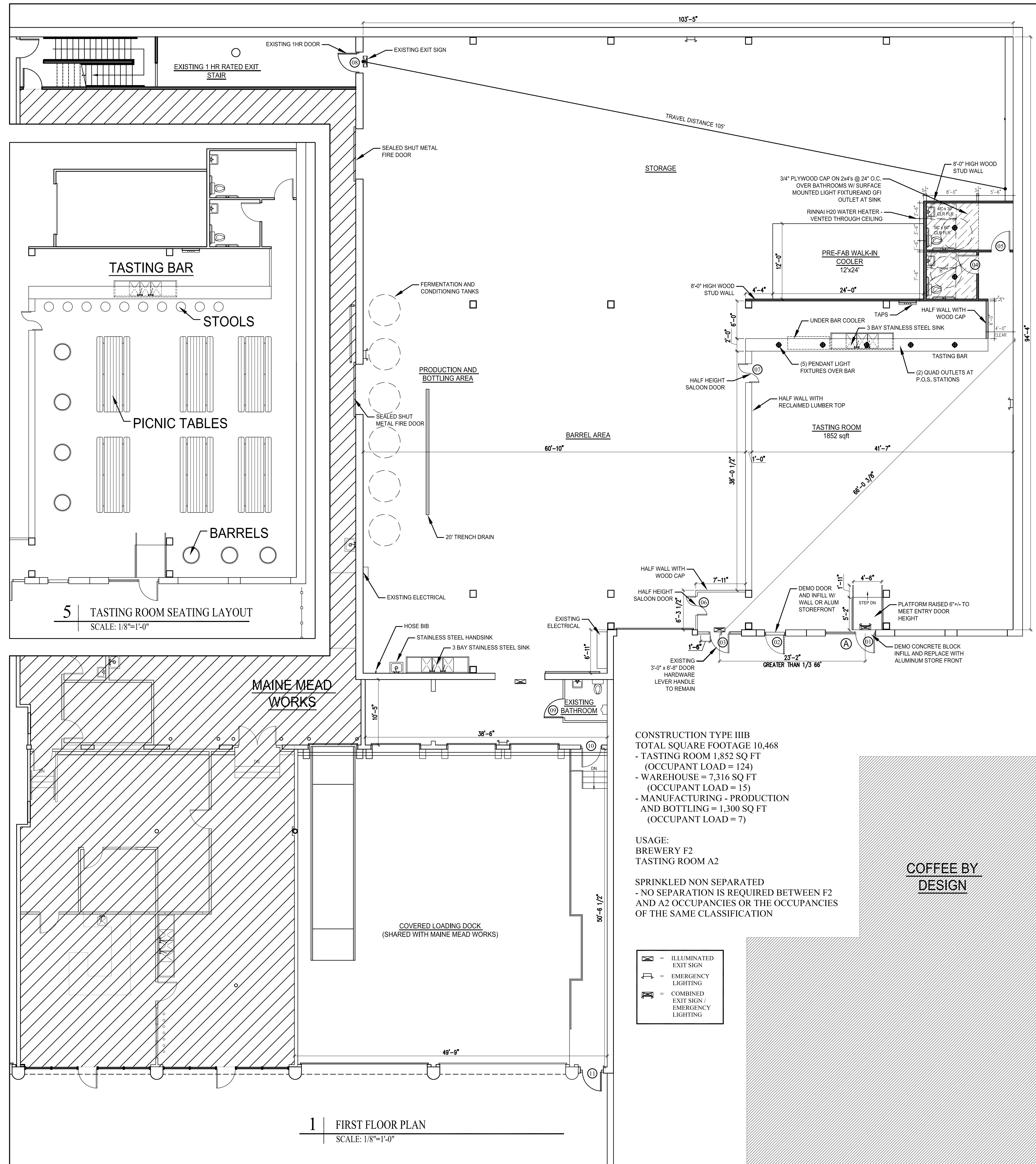
3 | BATHROOM ELEVATION
SCALE: 1/4"=1'-0"



4 | BATHROOM ELEVATION
SCALE: 1/4"=1'-0"



SITE PLAN
SCALE: NTS



1 | FIRST FLOOR PLAN
SCALE: 1/8"=1'-0"

CONSTRUCTION TYPE III B
TOTAL SQUARE FOOTAGE 10,468
- TASTING ROOM 1,852 SQ FT
(OCCUPANT LOAD = 124)
- WAREHOUSE = 7,316 SQ FT
(OCCUPANT LOAD = 15)
- MANUFACTURING - PRODUCTION
AND BOTTLING = 1,300 SQ FT
(OCCUPANT LOAD = 7)

USAGE:
BREWERY F2
TASTING ROOM A2

SPRINKLED NON SEPARATED
- NO SEPARATION IS REQUIRED BETWEEN F2
AND A2 OCCUPANCIES OR THE OCCUPANCIES
OF THE SAME CLASSIFICATION

- = ILLUMINATED EXIT SIGN
- = EMERGENCY LIGHTING
- = COMBINED EXIT SIGN / EMERGENCY LIGHTING

COFFEE BY DESIGN

Contract:
Oxbow Brewing Company
207-315-5962

Project:
Oxbow Brewing - Nissen Building
49 WASHINGTON AVE.
PORTLAND, MAINE

Revisions:
06/18/14

Scale:
AS NOTED

Date:
30 April 2014

PROPOSED FIT-UP

A1