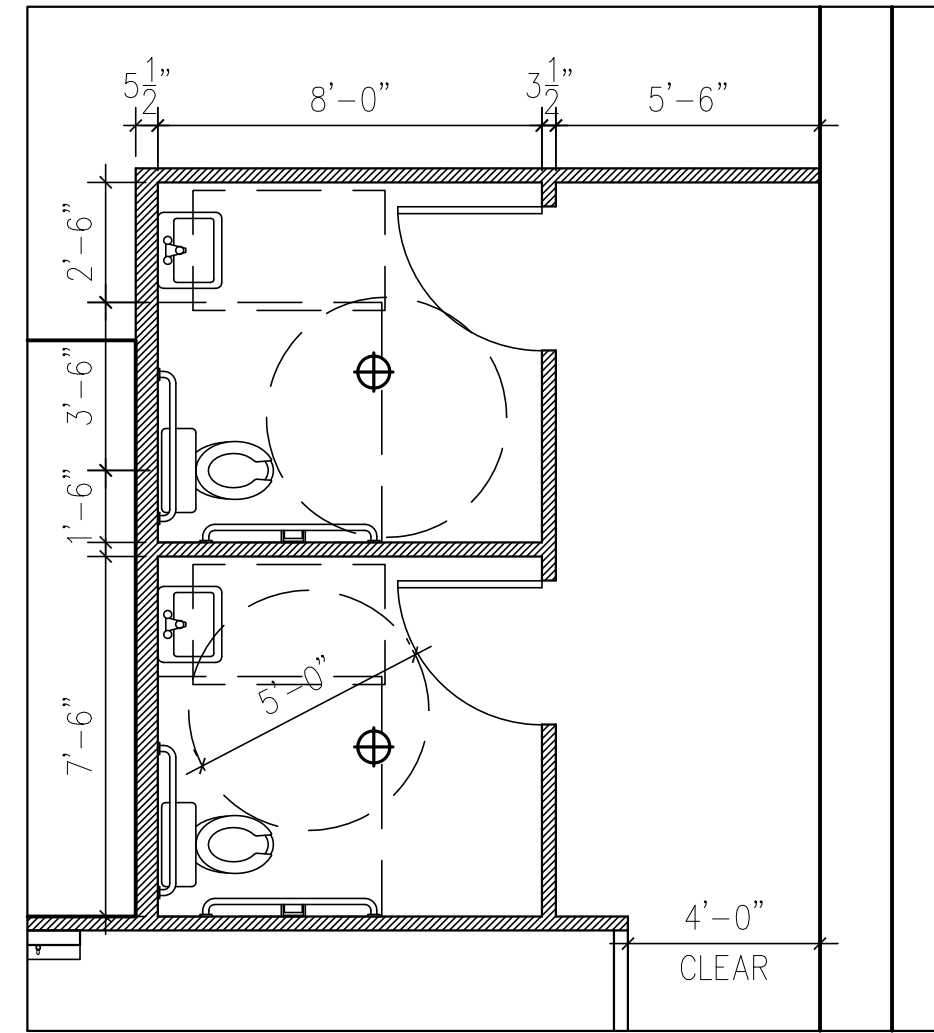
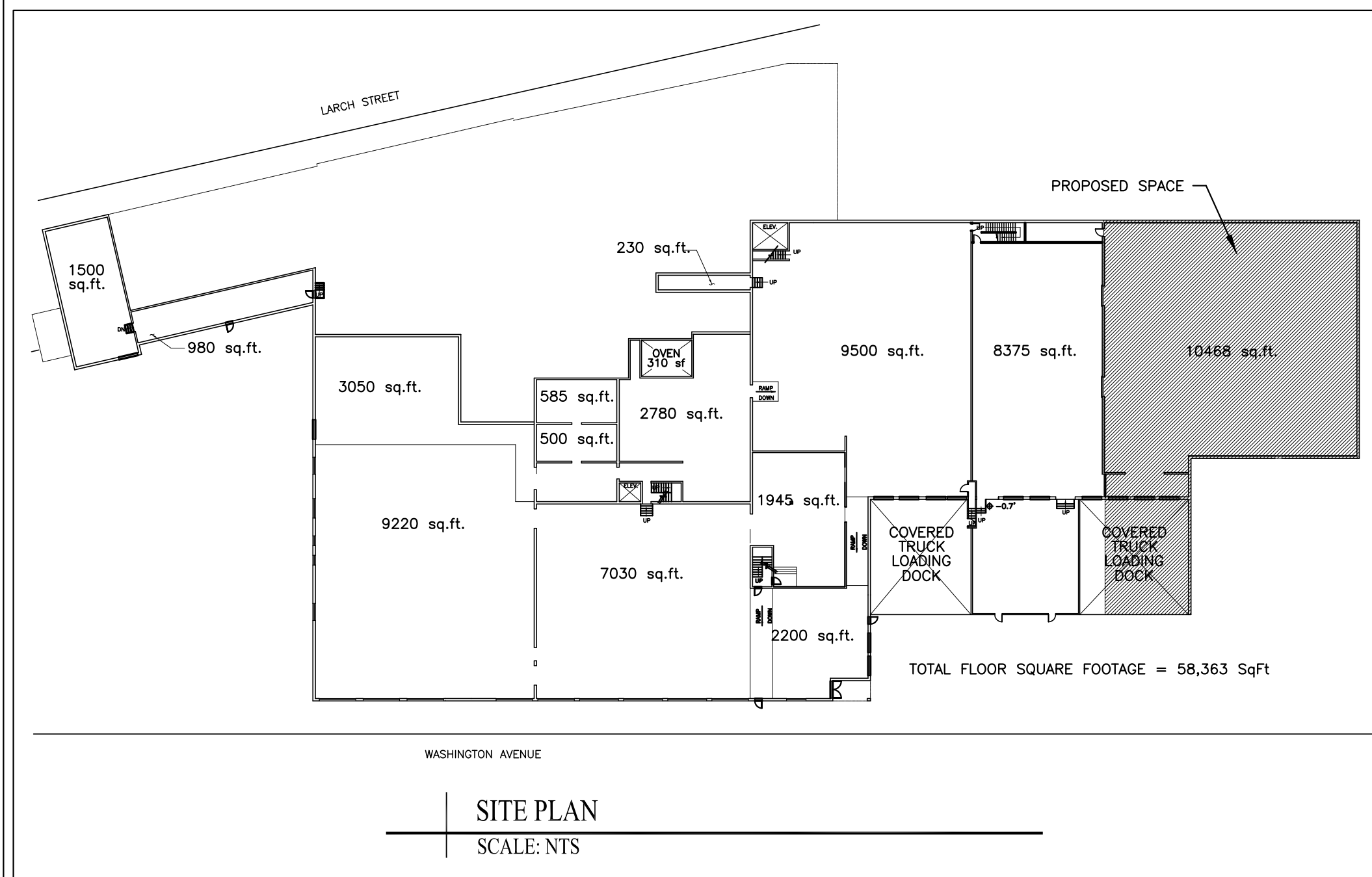


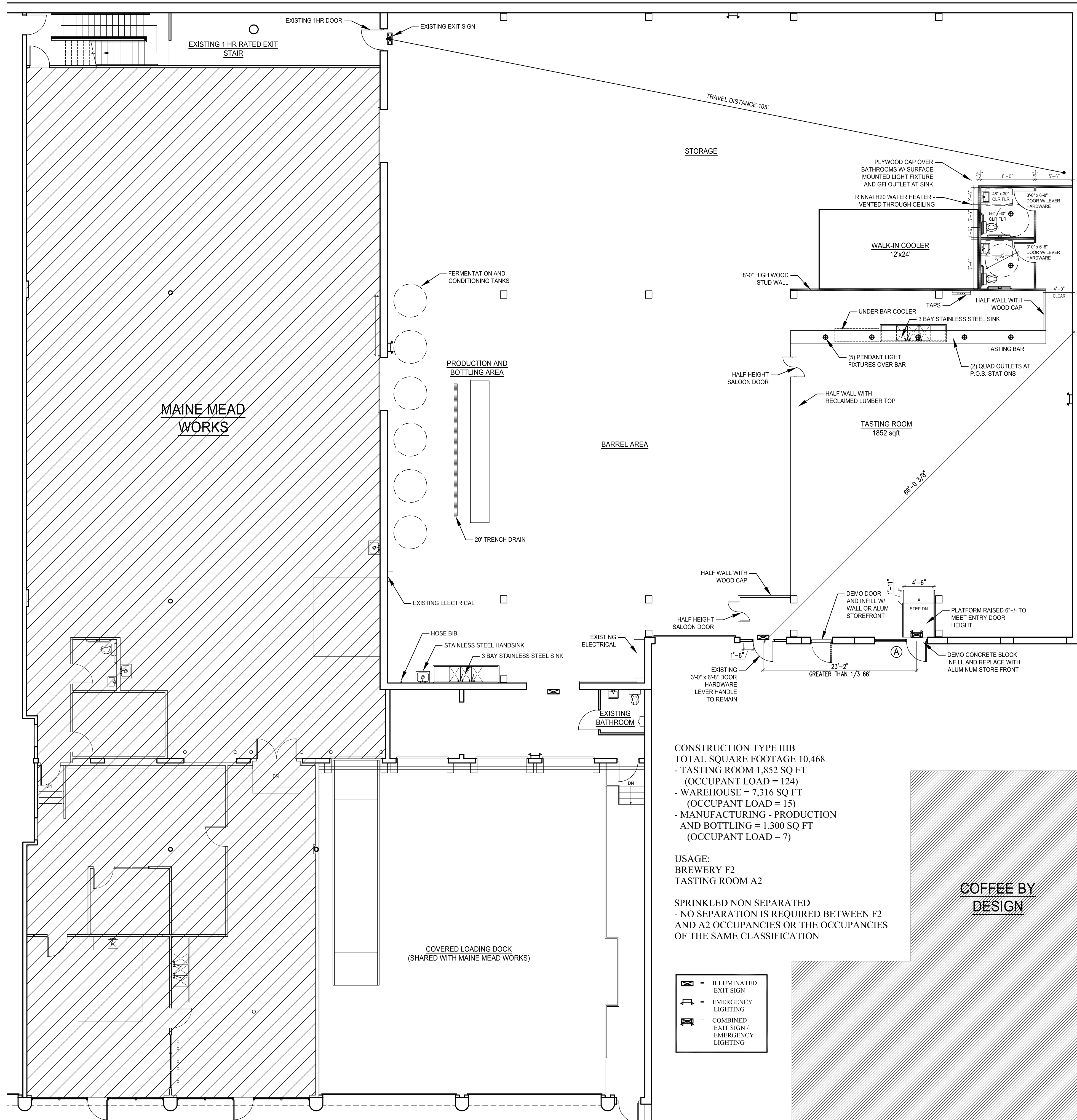
A ALUMINUM STOREFRONT ELEVATION
SCALE: 1/2"=1'-0"



2 BATHROOM PLAN
SCALE: 1/4"=1'-0"



SITE PLAN
SCALE: NTS



1 FIRST FLOOR PLAN
SCALE: 1/8"=1'-0"

CONSTRUCTION TYPE IIIB
TOTAL SQUARE FOOTAGE 10,468
- TASTING ROOM 1,852 SQ FT
(OCCUPANT LOAD = 124)
- WAREHOUSE = 7,316 SQ FT
(OCCUPANT LOAD = 15)
- MANUFACTURING - PRODUCTION
AND BOTTLING = 1,300 SQ FT
(OCCUPANT LOAD = 7)

USAGE:
BREWERY F2
TASTING ROOM A2

SPRINKLED NON SEPARATED
- NO SEPARATION IS REQUIRED BETWEEN F2
AND A2 OCCUPANCIES OR THE OCCUPANCIES
OF THE SAME CLASSIFICATION

- = ILLUMINATED EXIT SIGN
- = EMERGENCY LIGHTING
- = COMBINED EXIT SIGN / EMERGENCY LIGHTING

	Oxbow Brewing Company	207-315-5962
Project:	Oxbow Brewing - Nissen Building	
Revisions:	49 WASHINGTON AVE. PORTLAND, MAINE	
Date:	30 April 2014	PROPOSED FIT-UP
Scale:	AS NOTED	A1