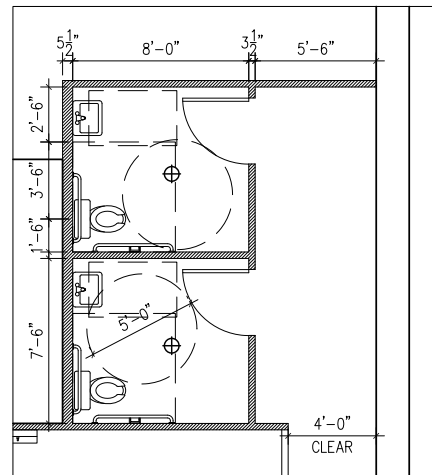
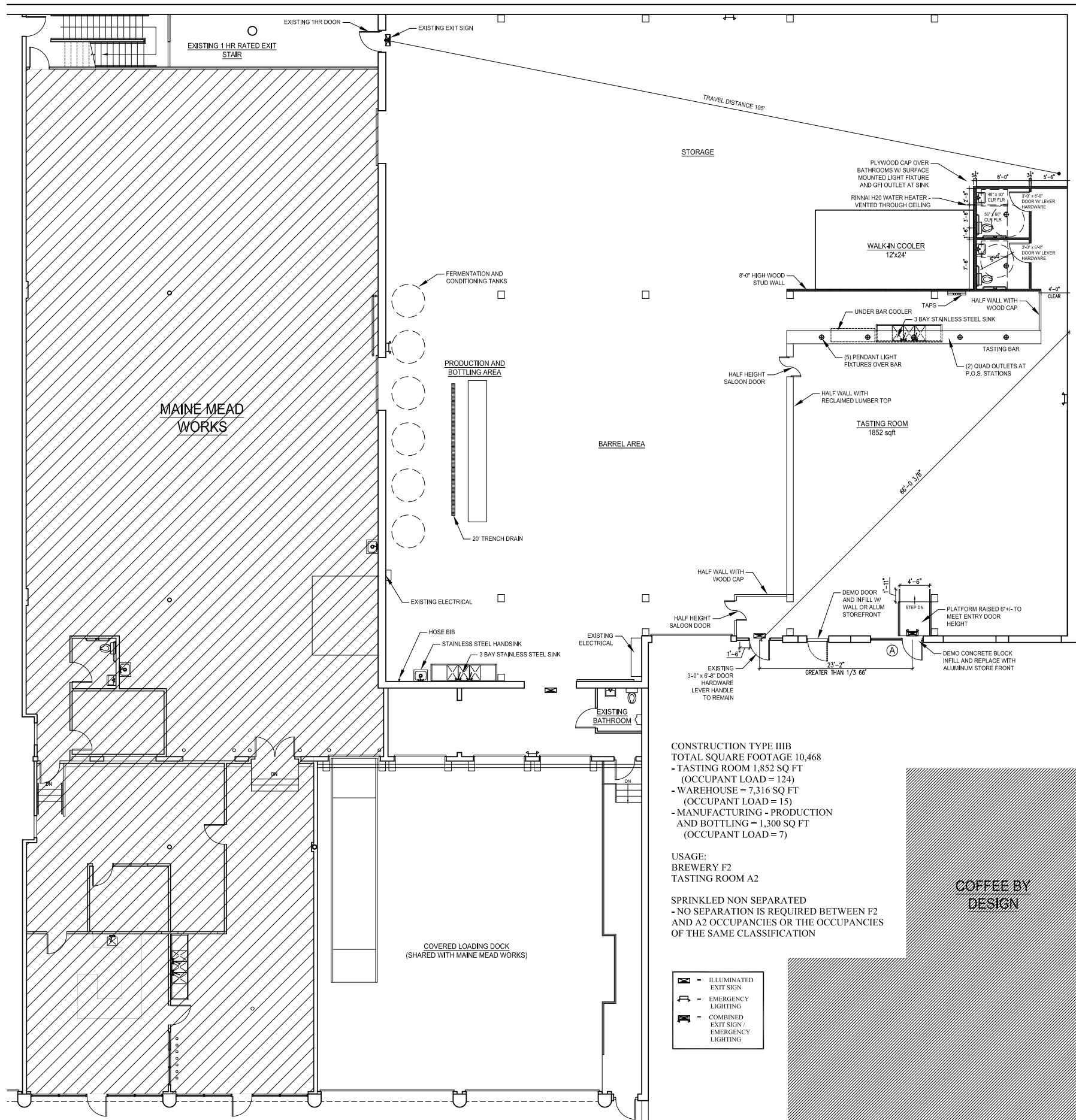


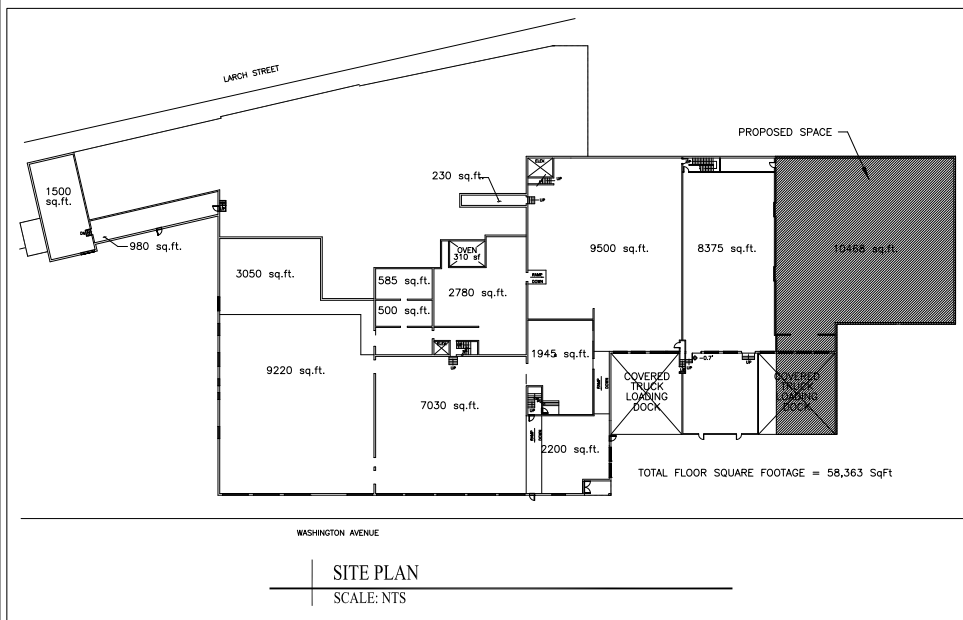
**A** ALUMINUM STOREFRONT ELEVATION  
SCALE: 1/2"=1'-0"



**2** BATHROOM PLAN  
SCALE: 1/4"=1'-0"



**1** FIRST FLOOR PLAN  
SCALE: 1/8"=1'-0"



CONSTRUCTION TYPE III-B  
TOTAL SQUARE FOOTAGE 10,468  
- TASTING ROOM 1,852 SQ FT (OCCUPANT LOAD = 124)  
- WAREHOUSE = 7,316 SQ FT (OCCUPANT LOAD = 15)  
- MANUFACTURING - PRODUCTION AND BOTTLING = 1,300 SQ FT (OCCUPANT LOAD = 7)

USAGE:  
BREWERY F2  
TASTING ROOM A2

SPRINKLED NON SEPARATED  
- NO SEPARATION IS REQUIRED BETWEEN F2 AND A2 OCCUPANCIES OR THE OCCUPANCIES OF THE SAME CLASSIFICATION

- = ILLUMINATED EXIT SIGN
- = EMERGENCY LIGHTING
- = COMBINED EXIT SIGN / EMERGENCY LIGHTING

Project:		Oxbow Brewing - Nissen Building	49 WASHINGTON AVE. PORTLAND, MAINE
Contact:		Oxbow Brewing Company	207-315-5962
Revisions:			
Date:	Scale:	PROPOSED FIT-UP	
30 April 2014	AS NOTED		
		<b>A1</b>	