

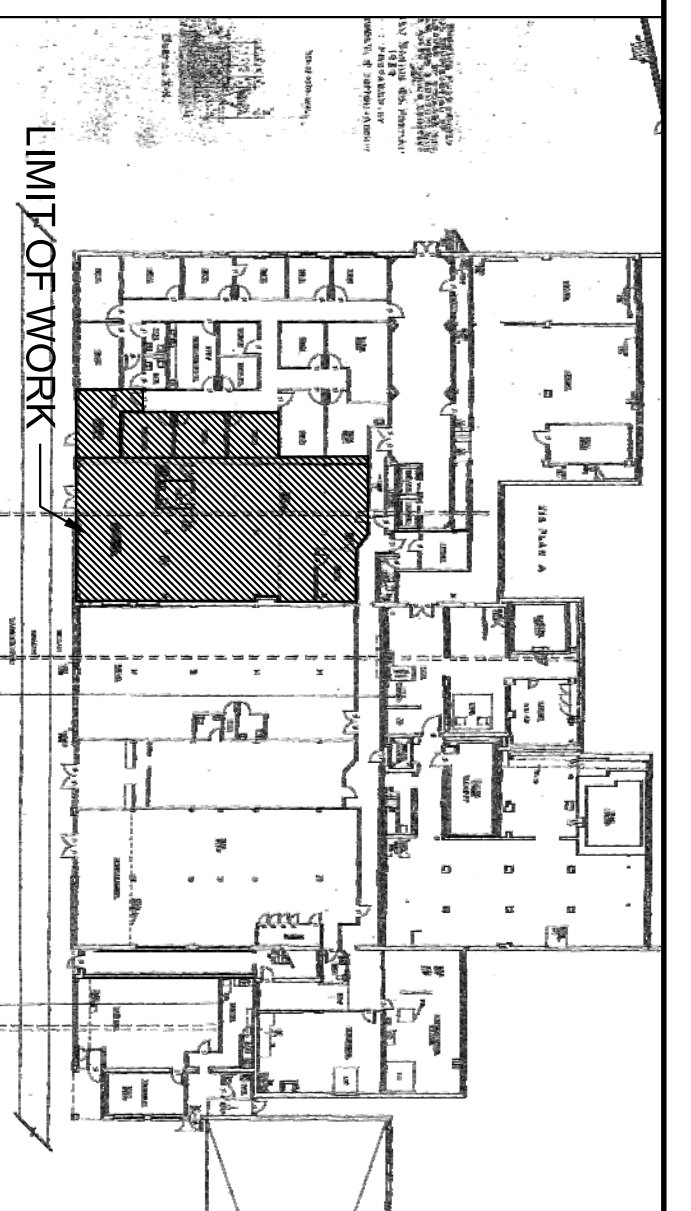
HALEY & ALDRICH
OFFICE RENOVATIONS
 75 WASHINGTON AVE
 PORTLAND, MAINE

#	DATE	DESCRIPTION
1	09/24/13	REvised DRAWINGS

DATE	09/27/13
PROJECT #	090813
DRAWN BY	BF
CHECKED BY	HET
DRAWING SCALE	NA
SHEET TITLE	
CODE REVIEW LIFE SAFETY PLAN	

G102

© COPYRIGHT 1985-2013
 DOCUMENT NUMBER: G102
 PROJECT NUMBER: 090813
 REVISIONS: 1



O11 LIFE SAFETY LEGEND

- LIFE SAFETY LEGEND**
- NEW HORN STROBE
 - EXISTING HORN STROBE
 - NEW STROBE
 - EXISTING STROBE
 - NEW FIRE EXTINGUISHER
 - EXISTING FIRE EXTINGUISHER
 - NEW EMERGENCY LIGHT
 - EXISTING EMERGENCY LIGHT
 - EXISTING FIRE ALARM PULL
 - EXISTING FIRE ALARM PULL
 - NEW EXIST SIGN
 - EXISTING EXIT SIGN
 - NEW EXIST SIGN
 - EXISTING EXIT SIGN
 - EXISTING THERMOSTAT
1. LOWER EXISTING EMERGENCY LIGHT DEVICES TO ACCOMMODATE NEW CEILING HEIGHT.

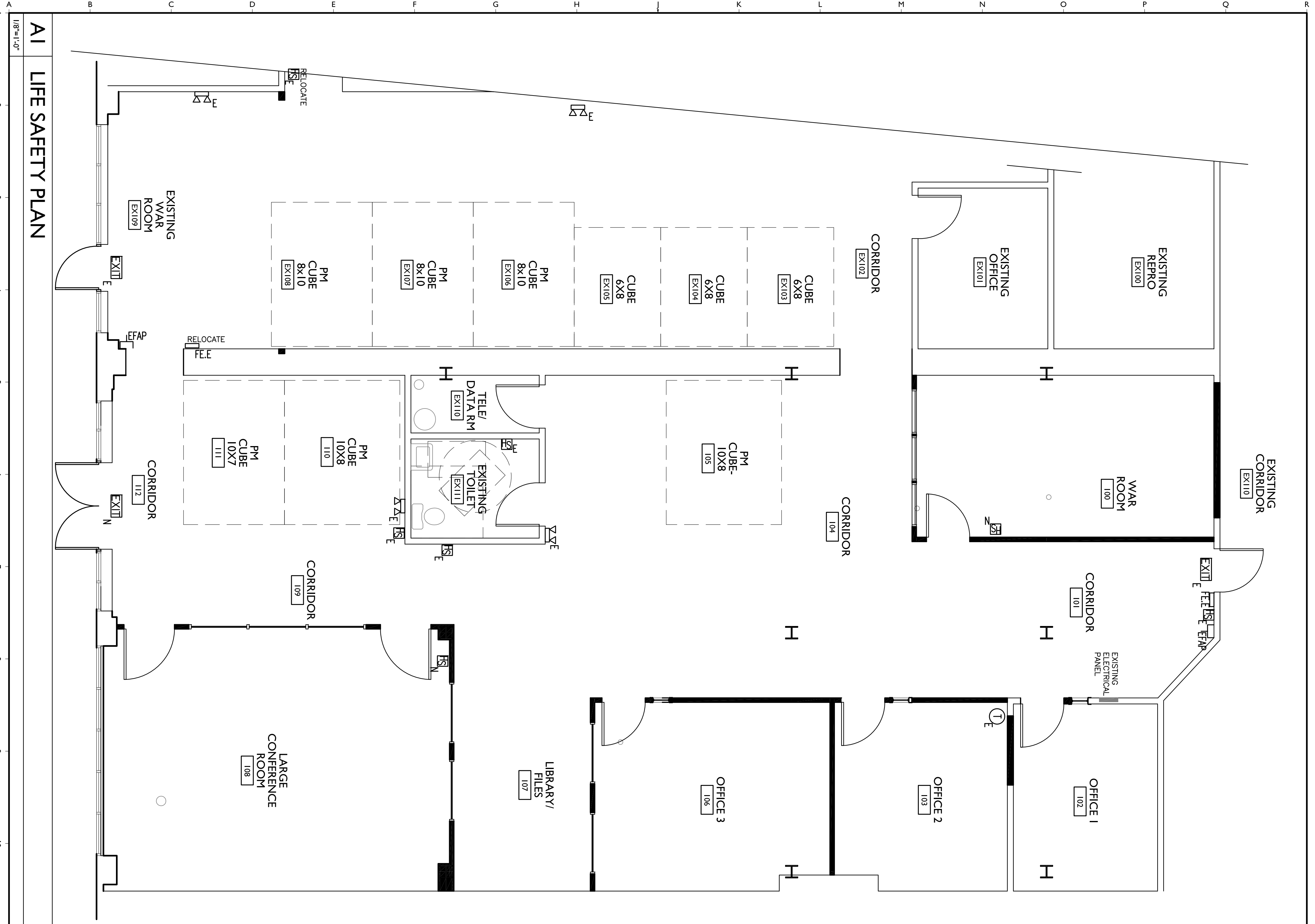
O17 FIRST FLOOR KEY PLAN

2009 NFPA: CODE DATA

TYPE OF CONSTRUCTION	CHAPTER 39 BUSINESS (EXISTING BUILDING)
OCCUPANT LOAD - SUITE 203 EXISTING:	4,556 ÷ 100 = 46
OCCUPANT LOAD - SUITE 203 NEW:	2,879 ÷ 100 = 29
CONSTRUCTION TYPE	TYPE II (200)
EXTERIOR BEARING WALLS	0 HOUR
EXTERIOR NONBEARING WALLS	0 HOUR
INTERIOR BEARING WALLS	0 HOUR
INTERIOR NONBEARING WALLS	0 HOUR
COLUMNS	0 HOUR
BEAMS, GIRDERS, TRUSSES	0 HOUR
FLOOR CONSTRUCTION	0 HOUR
FLOOR SEPARATION AT ASSEMBLY USE GROUP	0 HOUR
ROOF CONSTRUCTION	0 HOUR
MECHANICAL / ELECTRICAL ROOMS	1 HOUR
TENANT SEPARATION	1 HOUR - OFFICE OF THE FIRE MARSHAL, CHAPTER 20, FIRE SAFETY IN BUILDINGS AND STRUCTURES ADOPTED RULE NUMBER:2011-250, EFFECTIVE DATE: JULY 27, 2011, REDUCES RATING TO 0 HOUR
RENOVATED AREA - FIRST FLOOR	2,879 S.F.
FIRE SUPPRESSION	SUPERVISED AUTOMATIC SPRINKLER SYSTEM
HAZARD	
FIRE EXTINGUISHERS 9.7.4.1	75 FEET
COMMON PATH OF TRAVEL LIMIT	100 FEET
DEAD-END LIMIT	50 FEET
TRAVEL DISTANCE LIMIT	300 FEET FROM ANY POINT IN A BUILDING
EXITS	2
CORRIDOR WIDTH	44 INCHES MINIMUM
STAIR ENCLOSURES	1 HOUR
SHAFTS	1 HOUR
EXIT ACCESS CORRIDORS	0 HOUR
FLAME SPREAD RATINGS:	
INTERIOR FINISH REQUIREMENTS (SPRINKLERED BLDG)	CLASS A, B OR C
WALLS AND CEILINGS	CLASS A OR B
EXIT ACCESS CORRIDORS	CLASS A OR B
INTERIOR FLOOR FINISH REQUIREMENTS	NO REQUIREMENTS
EXITS	CLASS A OR B
CORRIDORS	CLASS A, B OR C
GENERAL NOTES	1. ALL PENETRATIONS OF FIRE RATED WALLS AND FLOORS SHALL BE SEALED WITH PROPER APPROVED MATERIALS. 2. ALL WORK SHALL CONFORM TO LOCAL AND STATE CODES, ORDINANCES, REQUIREMENTS AND ACCESSIBILITY PER ADA.A.G.

2009 IBC: CODE DATA

OCCUPANT LOAD - SUITE 203 EXISTING:	Business Occupancy (EXISTING BLDG)	4,556 ÷ 100 = 46
OCCUPANT LOAD - SUITE 203 NEW:	BUSINESS	2,879 ÷ 100 = 29
USE GROUP CLASSIFICATION	BUSINESS	
TYPE OF CONSTRUCTION	TYPE II UNPROTECTED	
ACTUAL BUILDING AREA BY FLOOR	UNKNOWN	
ACTUAL BUILDING HEIGHT	3 STORY EXISTING BUILDING	
EXIT ACCESS TRAVEL DISTANCE	300 FEET	
DEAD END CORRIDORS	20 FEET	
CORRIDOR WIDTH	44 INCHES	
STAIRWAY WIDTH	EXISTING STAIR TOWERS	
COMMON PATH - EGRESS TRAVEL	100 FEET	
FIRE RATING:		
EXTERIOR BEARING WALLS	0 HOUR	
INTERIOR BEARING WALLS	0 HOUR	
NON-BEARING WALLS & PARTITIONS	0 HOUR	
FLOOR CONSTRUCTION	0 HOUR	
ROOF CONSTRUCTION	0 HOUR	
CORRIDORS	0 HOUR	
STAIR ENCLOSURES	1 HOUR	
SHAFTS	1 HOUR	
UNIT SEPARATION	0 HOUR	
MECHANICAL/ELECTRICAL ROOMS	1 HOUR	
LAUNDRY/STORAGE >100 SF	1 HOUR	
WASTE COLLECTION >100 SF	1 HOUR	
FLAME SPREAD RATINGS:		
INTERIOR WALL & CEILING FINISH REQUIREMENTS	CLASS A, B OR C	
EXIT ENCLOSURES & EXIT PASSAGEWAYS	CLASS A OR B	
ROOMS OR ENCLOSED SPACES	CLASS A, B OR C	
INTERIOR FLOOR FINISH REQUIREMENTS	CLASS I OR II	
EXIT ENCLOSURES & EXIT PASSAGEWAYS	CLASS I OR II	
CORRIDORS	CLASS I OR II	
GENERAL NOTES	1. ALL PENETRATIONS OF FIRE RATED WALLS AND FLOORS SHALL BE SEALED WITH PROPER APPROVED MATERIALS. 2. ALL WORK SHALL CONFORM TO LOCAL AND STATE CODES, ORDINANCES, REQUIREMENTS AND ACCESSIBILITY PER ADA.A.G.	



A11 NFPA CODE REVIEW

A16 IBC CODE REVIEW

A I B C D E F G H I K L M Z O P
 1/8"=1'-0"
 2 3 4 5 6 7 8 9 10 11 12 13 14 15 16 17 18 19 20