

Gawron Turgeon ARCHITECTS
29 Black Point Road
Scarborough, Maine 04074
207-888-6782 or 207-887-0541 fax

GOODWILL INDUSTRIES
75 WASHINGTON AVENUE - THIRD FLOOR
PORTLAND, MAINE

REVISIONS	
1	08/21/13
2	
3	
4	
5	
6	
7	
8	
9	
10	
11	
12	
13	
14	
15	
16	
17	
18	
19	
20	
21	
22	
23	
24	

DATE	08/21/13
PROJECT #	070313
DRAWN BY	DLP
CHECKED BY	PHZ
DRAWING SCALE	AS NOTED

SHEET TITLE
EXISTING CONDITIONS
THIRD FLOOR
REFLECTED CEILING PLAN

EX300

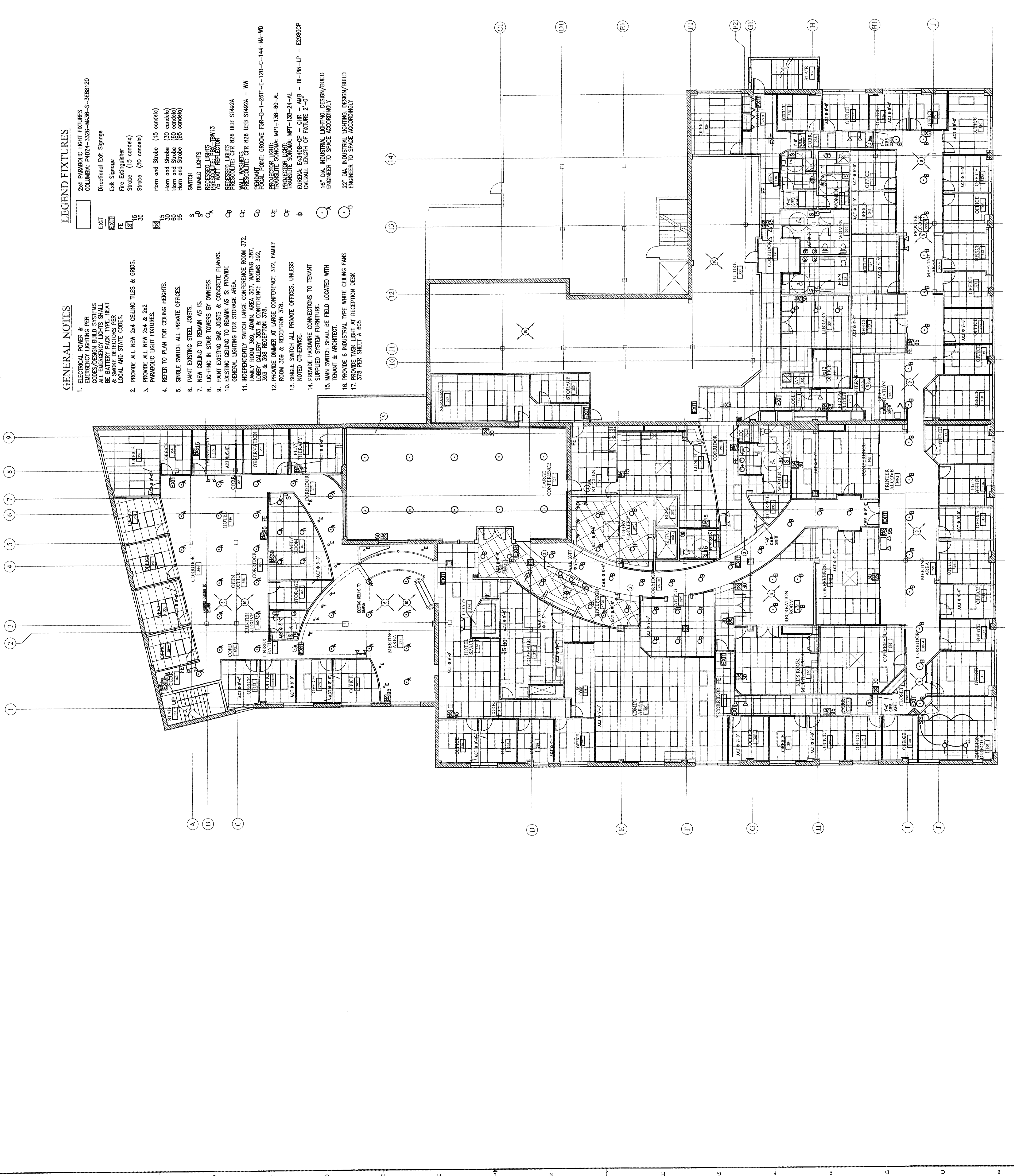
THIS DOCUMENT IS UNLESS OTHERWISE NOTED TO BE A PROPERTY OF GOODWILL INDUSTRIES. ALL RIGHTS RESERVED.

LEGEND FIXTURES

- 2x4 PARABOLIC LIGHT FIXTURES
COLUMBIA: P4024-3320-MA36-S-3EBB720
- EXIT
EXIT
FE
FE
FE
FE
FE
FE
- Directional Exit Signage
- Exit Signage
- Fire Extinguisher
- Stroke (15 candle)
- Stroke (30 candle)
- Hom and Stroke (15 candle)
- Hom and Stroke (30 candle)
- Hom and Stroke (90 candle)
- Stroke (90 candle)

GENERAL NOTES

- ELECTRICAL POWER & EMERGENCY LIGHTING PER CODES/DESIGN BUILD SYSTEMS SHALL BE PERFORMED BY AN ELECTRICIAN. ALL ELECTRICAL AND SMOKING DETECTOR WORK SHALL BE BATTERY BACK UP TYPE. HEAT LOCAL AND STATE CODES.
- PROVIDE ALL NEW 2x4 CEILING TILES & GRIDS.
- PARABOLIC LIGHT FIXTURES.
- REFER TO PLAN FOR CEILING HEIGHTS.
- SINGLE SWITCH ALL PRIVATE OFFICES.
- PAINT EXISTING STEEL JOISTS.
- NEW CEILING TO REMAIN AS IS.
- LIGHTING IN STAIR TOWERS BY OWNERS.
- EXISTING GUY WIRING & CONCRETE PLANKS.
- PROVIDE CEILING TO REMAIN AS IS. PROVIDE GENERAL LIGHTING FOR STORAGE AREA.
- INDEPENDENTLY SWITCH LARGE CONFERENCE ROOM 372, FAMILY ROOM 369, ADMIN. AREA 307, WAITING 397, LOBBY GALLERY 383 & CONFERENCE ROOMS 392, 393 & 398 RECEPTION 376.
- PROVIDE DIMMER AT LARGE CONFERENCE 372, FAMILY ROOM 369 & RECEPTION 376.
- SINGLE SWITCH ALL PRIVATE OFFICES, UNLESS NOTED OTHERWISE.
- PROVIDE HARDWARE CONNECTIONS TO TENANT SUPPLIED SYSTEM. BE FIELD LOCATED WITH TENANT ARCHITECT.
- PROVIDE 6 INDUSTRIAL TYPE WHITE CEILING FANS PER SHEET A 605
- PROVIDE TASK LIGHT AT RECEPTION DESK



A1 EXISTING CONDITIONS THIRD FLOOR REFLECTED CEILING PLAN - FOR REFERENCE ONLY