

**GOODWILL INDUSTRIES**  
 75 WASHINGTON AVENUE - THIRD FLOOR  
 PORTLAND, MAINE

REVISIONS		
#	DATE	DESCRIPTION
1	08.23.13	PERMIT SET
2	08.28.13	ASR-CODE REVIEW SHEET

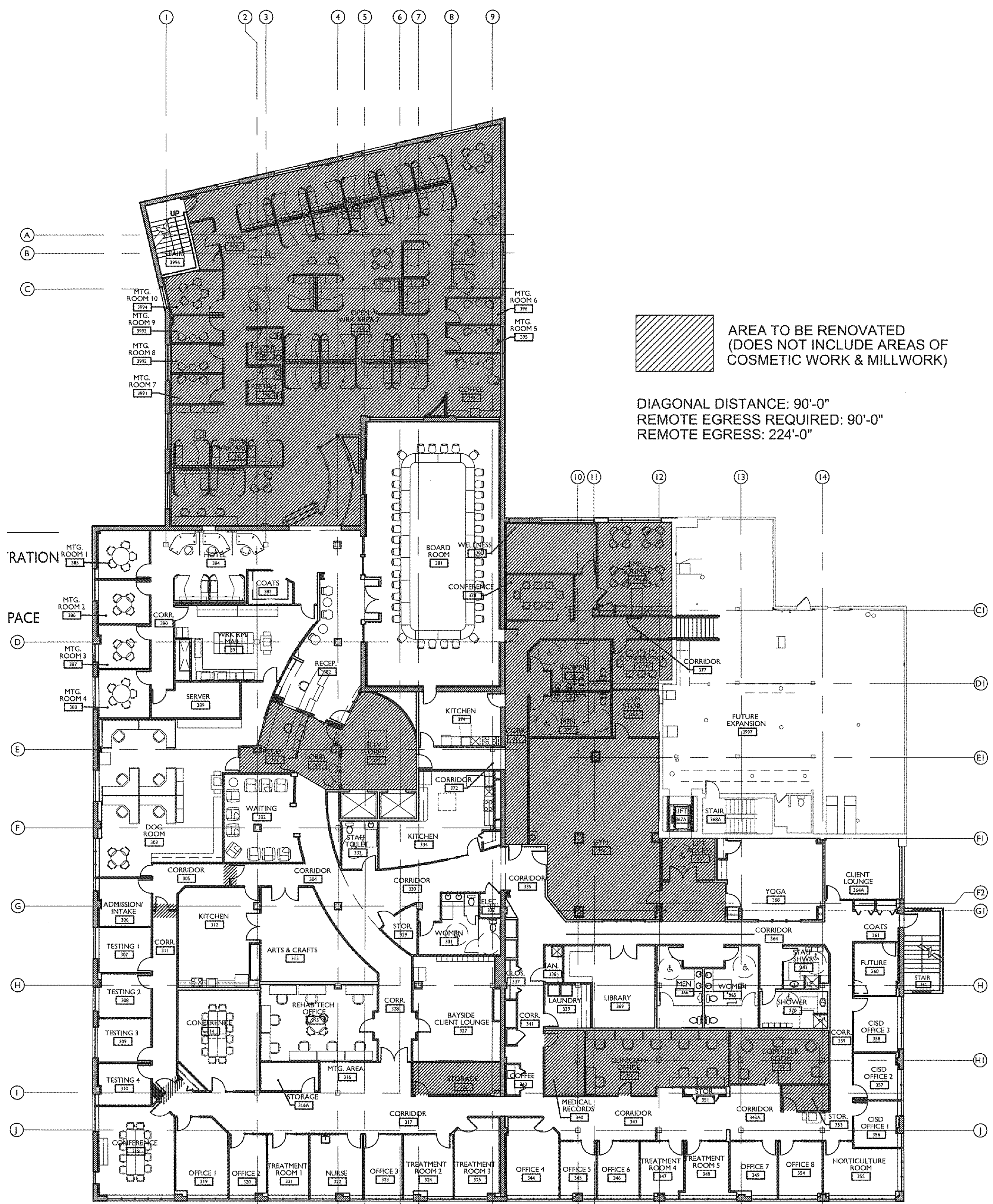
DATE:	08.23.13
PROJECT #:	070313
DRAWN BY:	DLP
CHECKED BY:	MET
DRAWING SCALE:	N.A.

SHEET TITLE

CODE REVIEW

**G102**

© COPYRIGHT 1985-2001  
 REPRODUCTION OR USE OF  
 THIS DOCUMENT WITHOUT  
 WRITTEN PERMISSION IS PROHIBITED.  
 GAWRON ARCHITECTS, INC.



2009 NFPA: CODE DATA	
TYPE OF CONSTRUCTION	CHAPTER 39 BUSINESS (EXISTING BUILDING)
OCCUPANT LOAD	291 OCCUPANTS (29,080 SF / EXISTING 3 STORY BUILDING)
CONSTRUCTION TYPE	TYPE II (200)
EXTERIOR BEARING WALLS	0 HOUR
EXTERIOR NONBEARING WALLS	0 HOUR
INTERIOR BEARING WALLS	0 HOUR
COLUMNS	0 HOUR
BEAMS, GIRDERS, TRUSSES	0 HOUR
FLOOR CONSTRUCTION	0 HOUR
FLOOR SEPARATION AT ASSEMBLY USE GROUP	0 HOUR
ROOF CONSTRUCTION	0 HOUR
MECHANICAL / ELECTRICAL ROOMS	1 HOUR
TENANT SEPARATION	0 HOUR
OCCUPIED AREA - THIRD FLOOR	29,080 SF
UNOCCUPIED - THIRD FLOOR	2,700 SF
RENOVATED AREA - THIRD FLOOR	9,614 SF
FIRE SUPPRESSION	SUPERVISED AUTOMATIC SPRINKLER SYSTEM
HAZZARD	
FIRE EXTINGUISHERS 9.7.4.1	75 FEET
COMMON PATH OF TRAVEL LIMIT	100 FEET
DEAD-END LIMIT	50 FEET
TRAVEL DISTANCE LIMIT	300 FEET FROM ANY POINT IN A BUILDING
EXITS	2
CORRIDOR WIDTH	44 INCHES MINIMUM
STAIR ENCLOSURES	1 HOUR
SHAFTS	1 HOUR
EXIT ACCESS CORRIDORS	0 HOUR
ACCESS CONTROLLED EGRESS DOORS 7.2.1.6.2	ACTIVATION OF THE BUILDINGS AUTOMATIC SPRINKLER OR ALARM SYSTEM SHALL AUTOMATICALLY UNLOCK THE DOOR LEAVES IN THE DIRECTION OF EGRESS AND THEY SHALL REMAIN UNLOCKED UNTIL THE FIRE PROTECTIVE SIGNAL SYSTEM HAS BEEN MANUALLY RESET.
FLAME SPREAD RATINGS:	
INTERIOR FINISH REQUIREMENTS (SPRINKLERED BLDG)	
WALLS AND CEILINGS	CLASS A, B OR C
EXIT ACCESS CORRIDORS	CLASS A OR B
INTERIOR FLOOR FINISH REQUIREMENTS	NO REQUIREMENTS
EXITS	CLASS A OR B
CORRIDORS	CLASS A, B OR C
GENERAL NOTES	1. ALL PENETRATIONS OF FIRE RATED WALLS AND FLOORS SHALL BE SEALED WITH PROPER APPROVED MATERIALS. 2. ALL WORK SHALL CONFORM TO LOCAL AND STATE CODES, ORDINANCES, REQUIREMENTS AND ACCESSIBILITY PER A.D.A.A.G.

2009 IBC: CODE DATA	
	<b>Business Occupancy (EXISTING BLDG)</b>
OCCUPANT LOAD	291 OCCUPANTS
USE GROUP CLASSIFICATION	BUSINESS
TYPE OF CONSTRUCTION	TYPE II UNPROTECTED
ACTUAL BUILDING AREA BY FLOOR	OCCUPIED - THIRD FLOOR 29,080 SF UNOCCUPIED - THIRD FLOOR 2,700 SF
ACTUAL BUILDING HEIGHT	3 STORY EXISTING BUILDING
EXIT ACCESS TRAVEL DISTANCE	300 FEET
DEAD END CORRIDORS	20 FEET
CORRIDOR WIDTH	44 INCHES
STAIRWAY WIDTH	EXISTING STAIR TOWERS
COMMON PATH - EGRESS TRAVEL	100 FEET
FIRE RATING:	
EXTERIOR BEARING WALLS	0 HOUR
INTERIOR BEARING WALLS	0 HOUR
NON-BEARING WALLS & PARTITIONS	0 HOUR
FLOOR CONSTRUCTION	0 HOUR
ROOF CONSTRUCTION	0 HOUR
CORRIDORS	0 HOUR
STAIR ENCLOSURES	1 HOUR
SHAFTS	1 HOUR
UNIT SEPARATION	1 HOUR - NO UNIT SEPARATION ON THE THIRD FLOOR
MECHANICAL/ELECTRICAL ROOMS	1 HOUR
LAUNDRY/STORAGE >100 SF	1 HOUR
WASTE COLLECTION >100 SF	1 HOUR
FLAME SPREAD RATINGS:	
INTERIOR WALL & CEILING FINISH REQUIREMENTS	CLASS A, B OR C
EXIT ENCLOSURES & EXIT PASSAGeways	CLASS A OR B
CORRIDORS	CLASS A, B OR C
ROOMS OR ENCLOSED SPACES	CLASS A, B OR C
INTERIOR FLOOR FINISH REQUIREMENTS	
EXIT ENCLOSURES & EXIT PASSAGeways	CLASS I OR II
CORRIDORS	CLASS I OR II
GENERAL NOTES	1. ALL PENETRATIONS OF FIRE RATED WALLS AND FLOORS SHALL BE SEALED WITH PROPER APPROVED MATERIALS. 2. ALL WORK SHALL CONFORM TO LOCAL AND STATE CODES, ORDINANCES, REQUIREMENTS AND ACCESSIBILITY PER A.D.A.A.G.

AI CODE REVIEW PLAN

A10 2009 NFPA CODE DATA

A17 2009 IBC CODE DATA

1/16"=1'-0"