

**GOODWILL INDUSTRIES**  
75 WASHINGTON AVENUE - THIRD FLOOR  
PORTLAND, MAINE

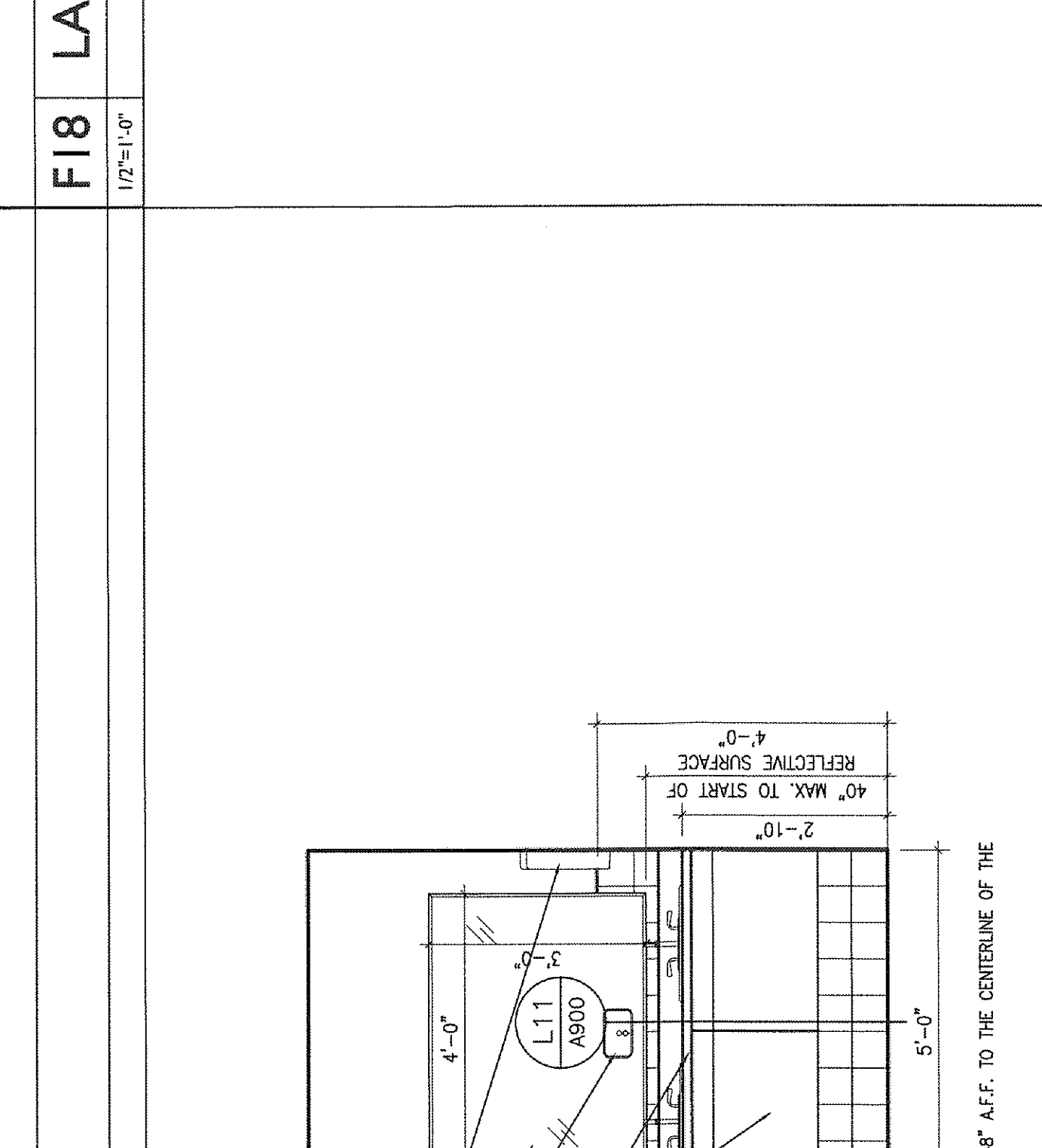
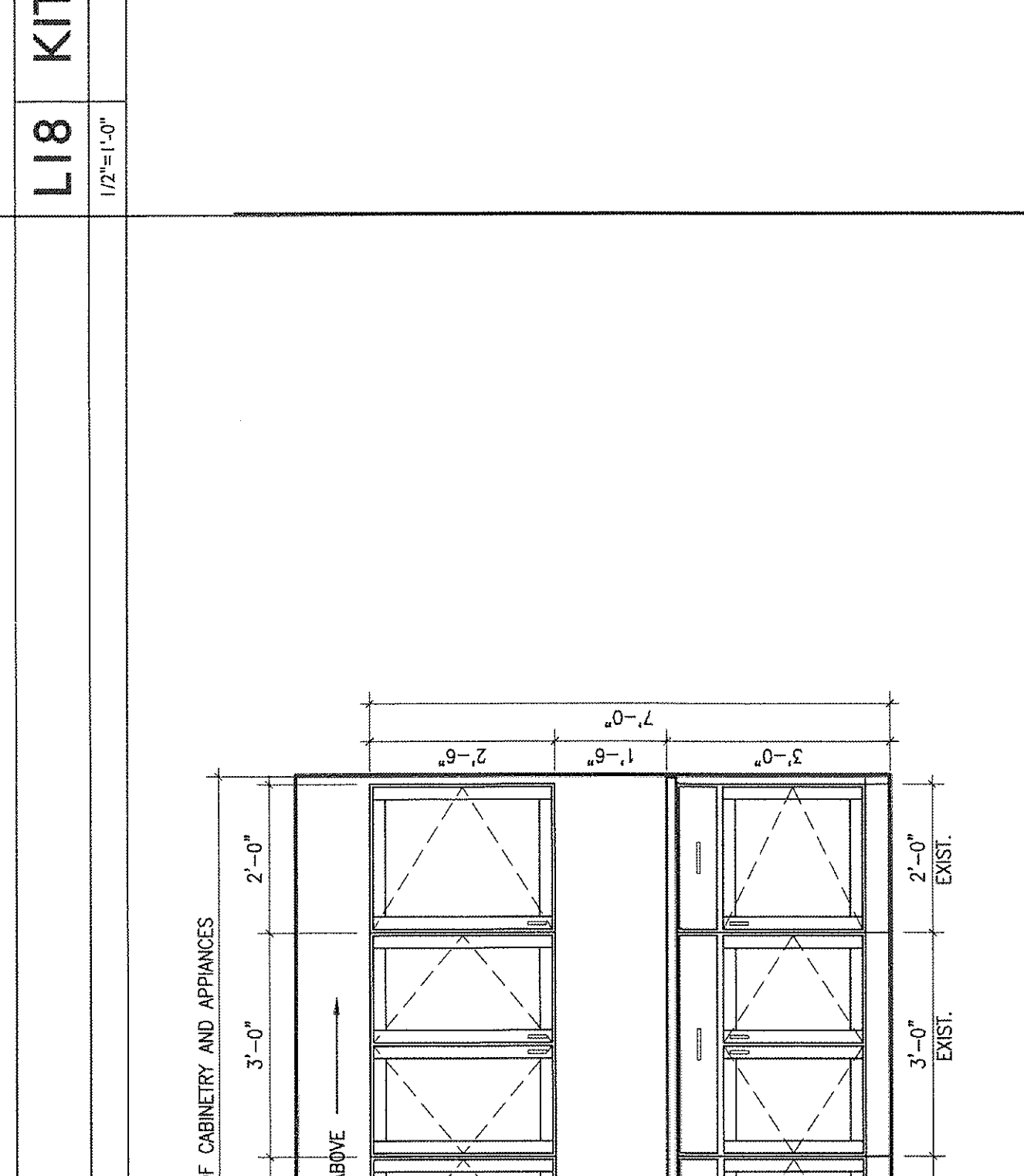
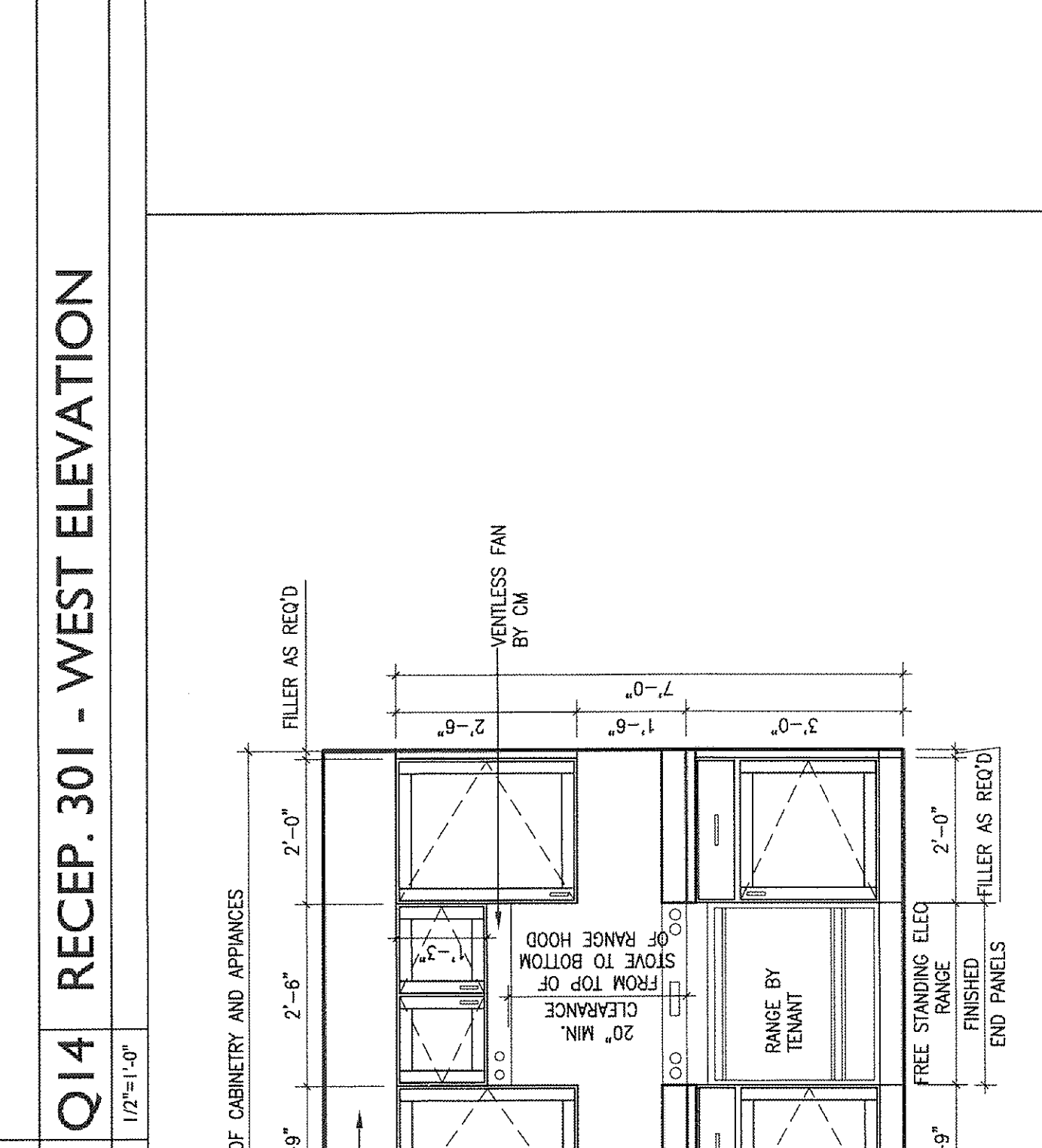
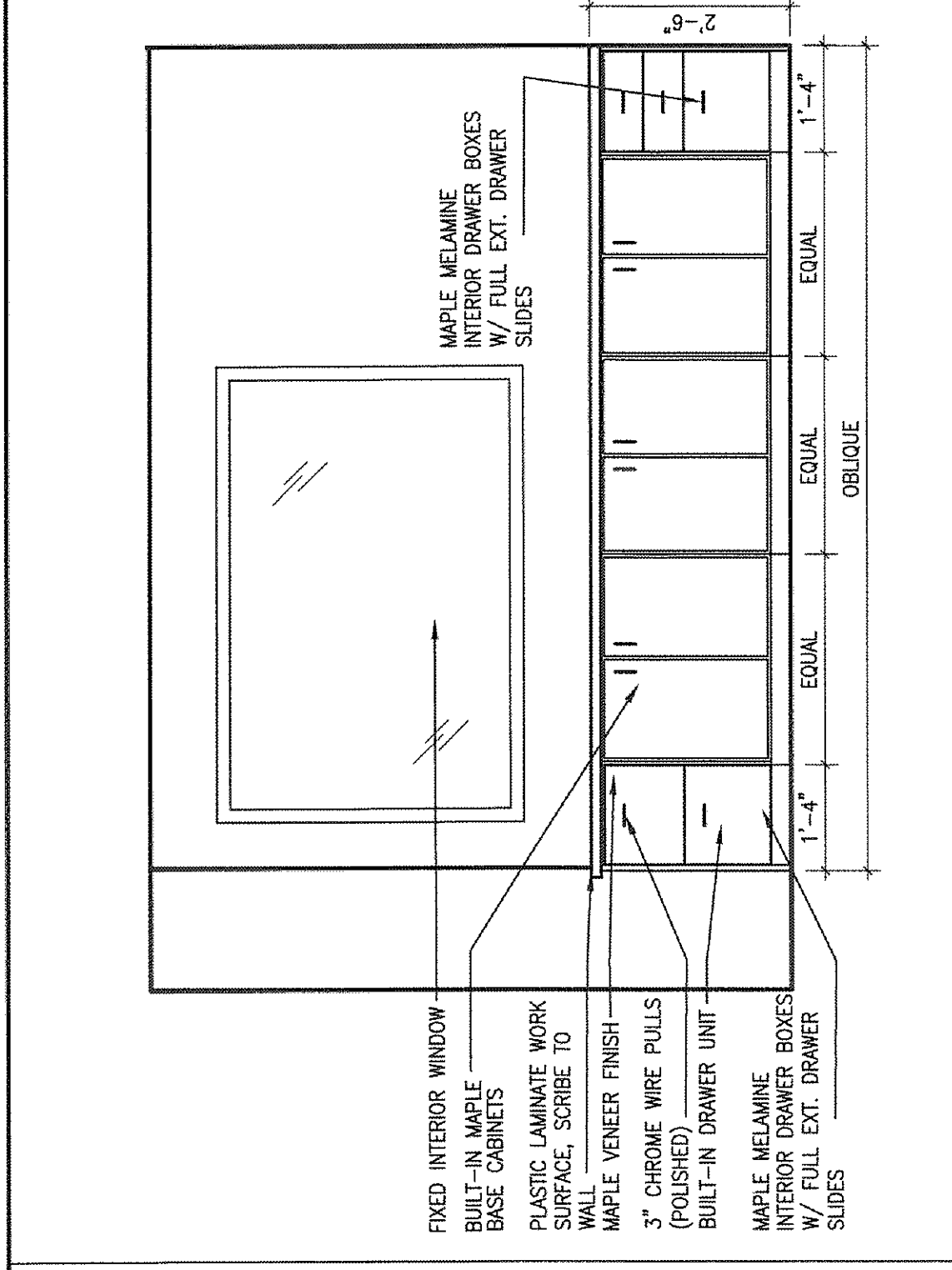
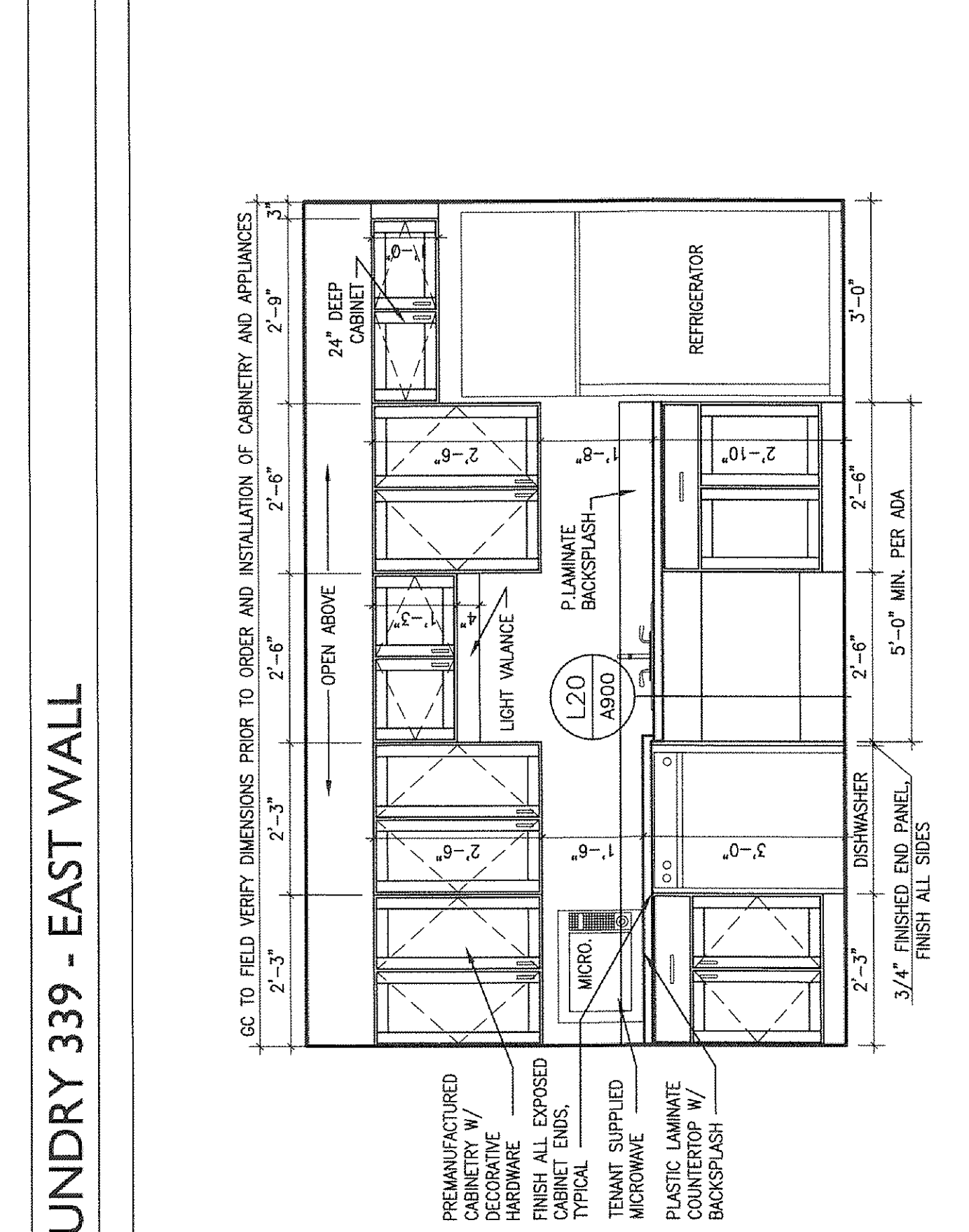
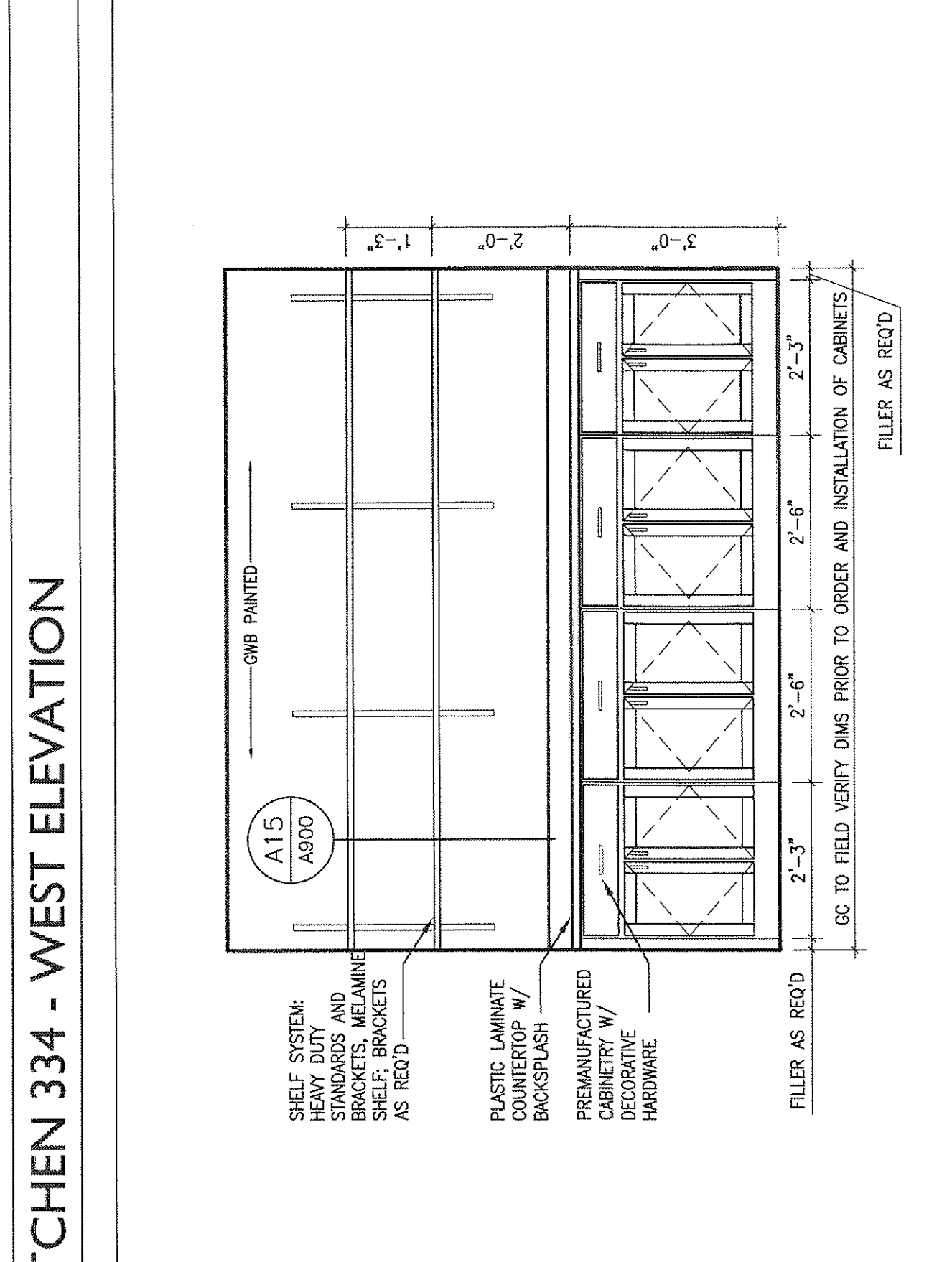
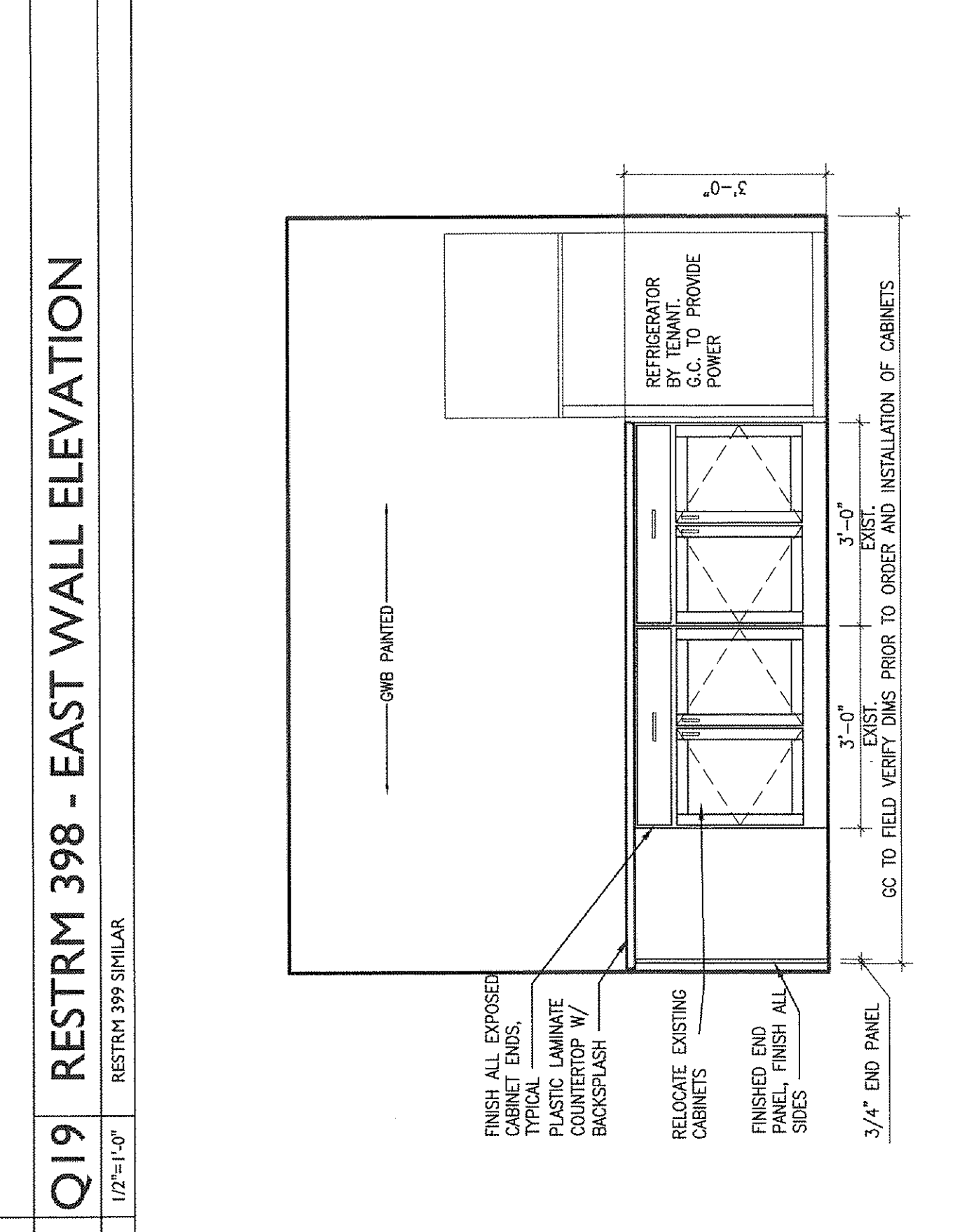
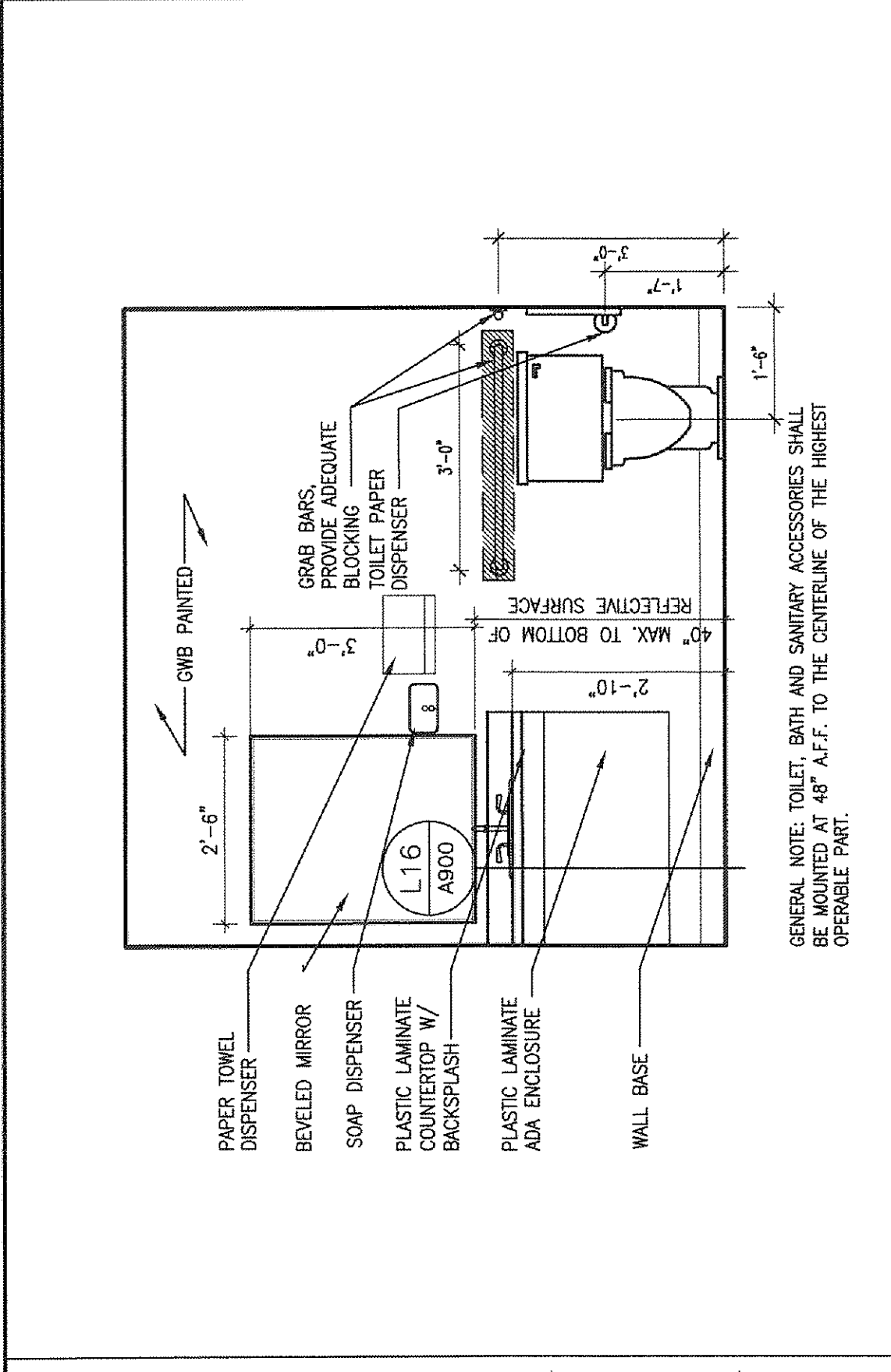
REVISIONS	DATE	DESCRIPTION	PREPARED BY
1	08.23.13		

DATE	08.23.13
PROJECT #	070113
DRAWN BY	DLP
CHECKED BY	MET
DRAWING SCALE	AS NOTED

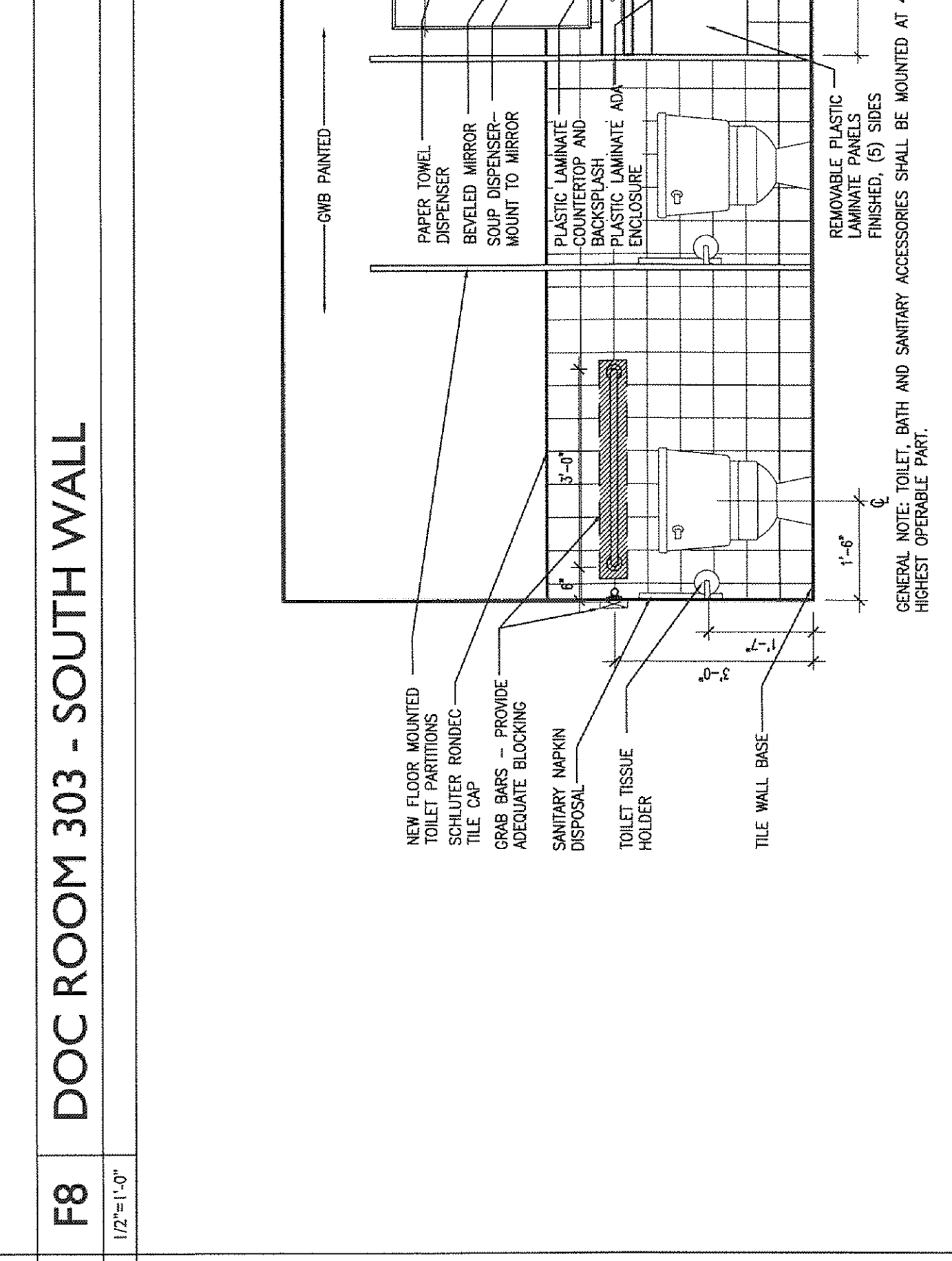
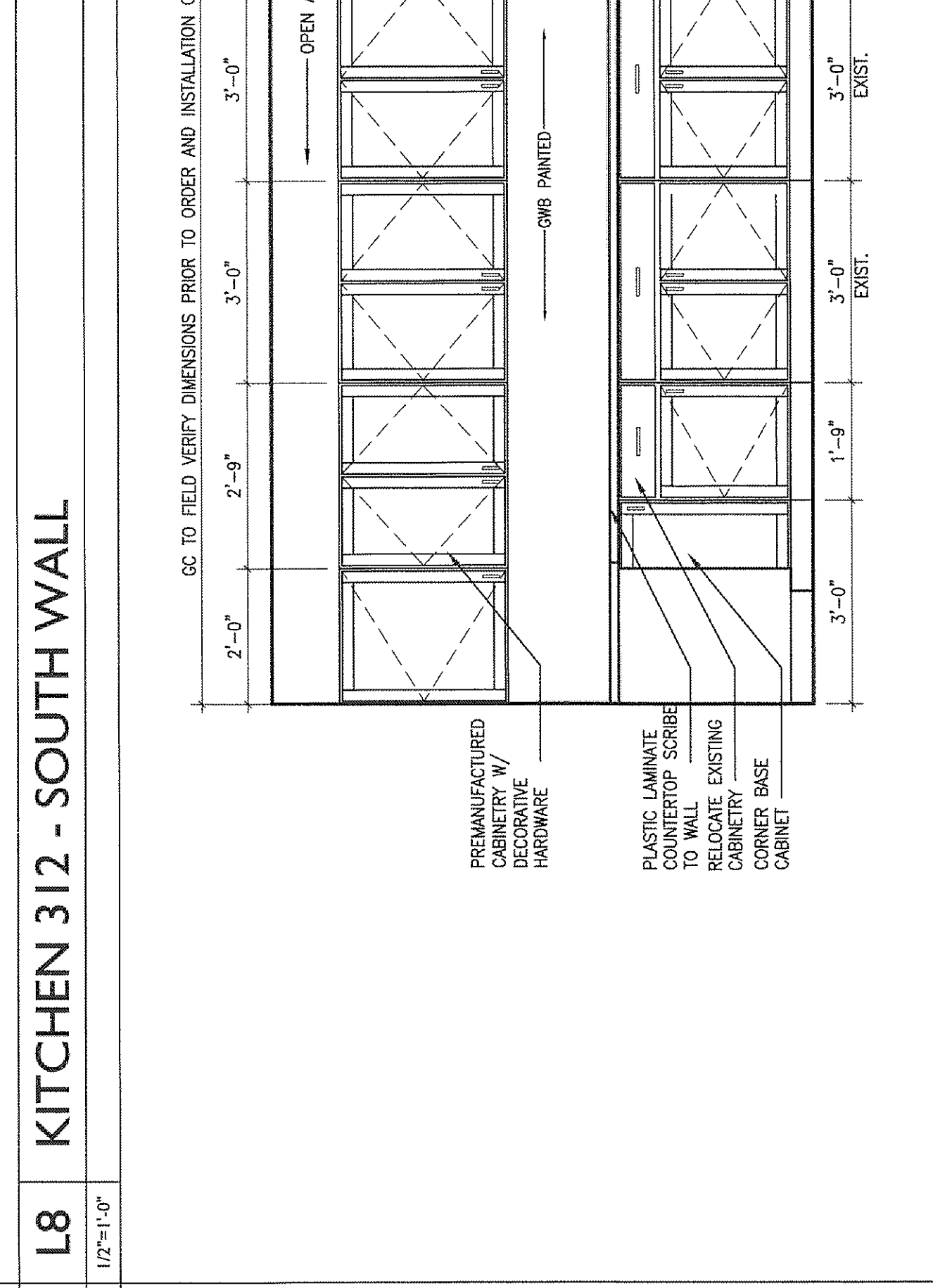
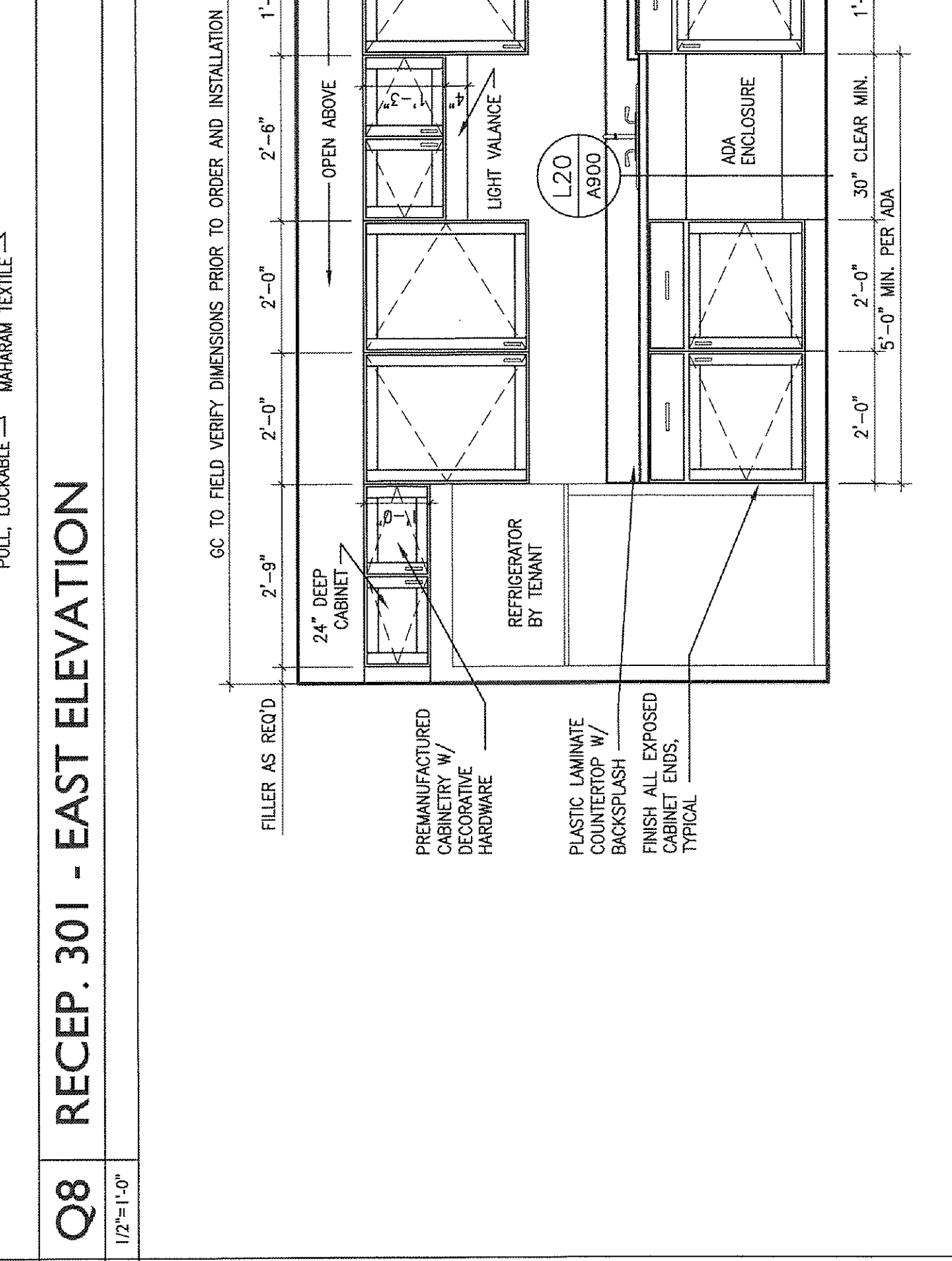
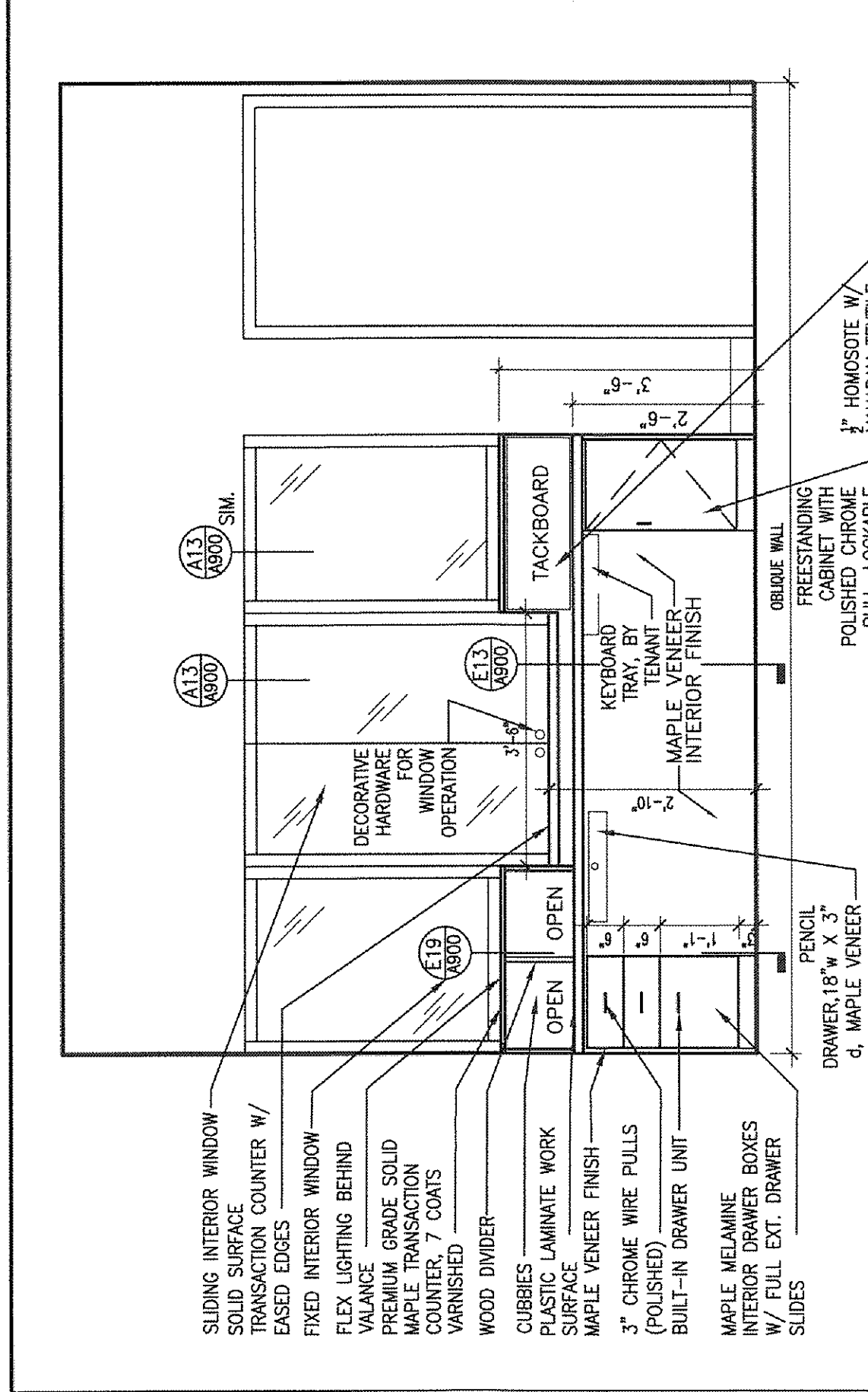
SHEET TITLE  
INTERIOR ELEVATIONS

**A910**

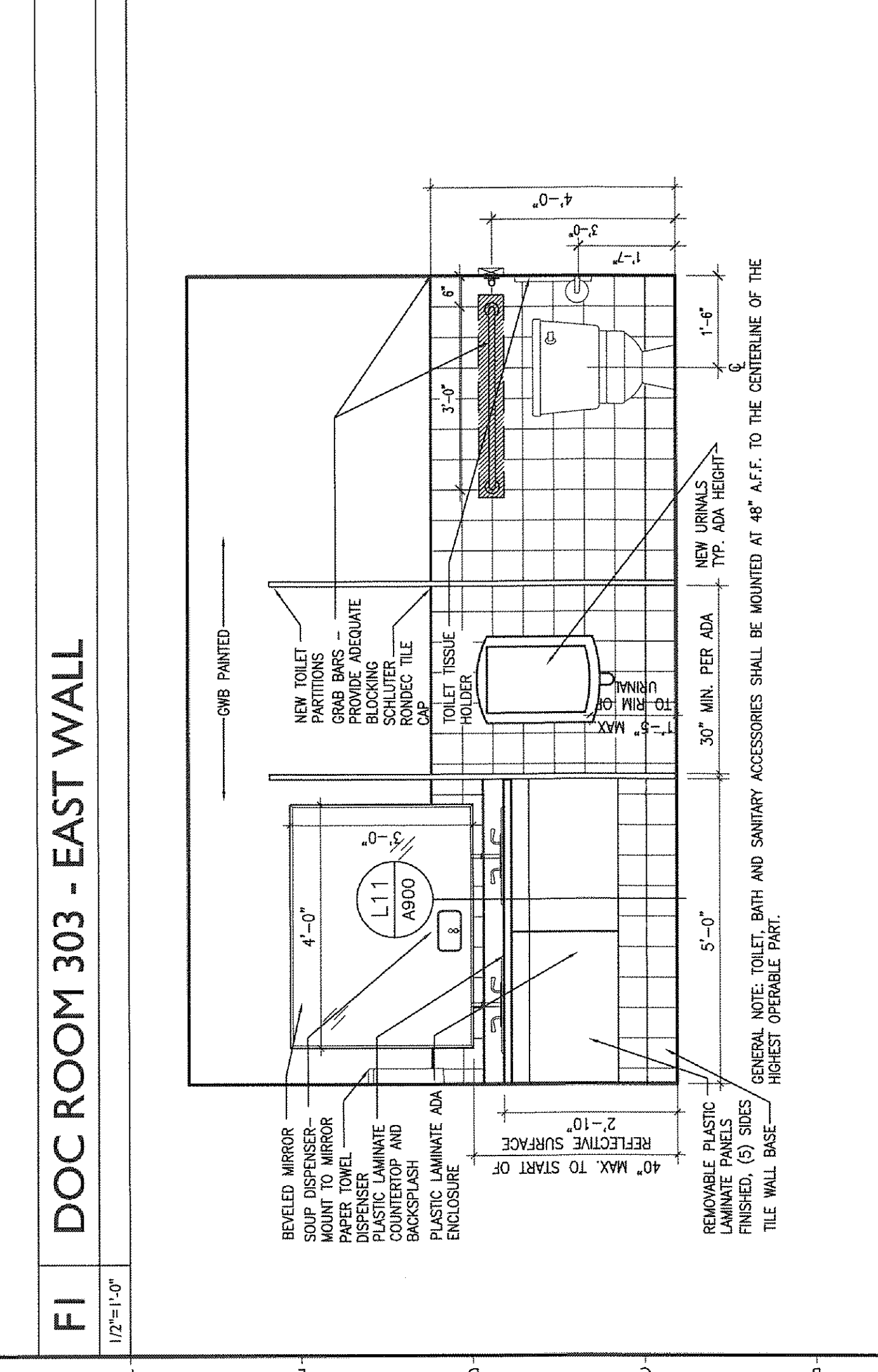
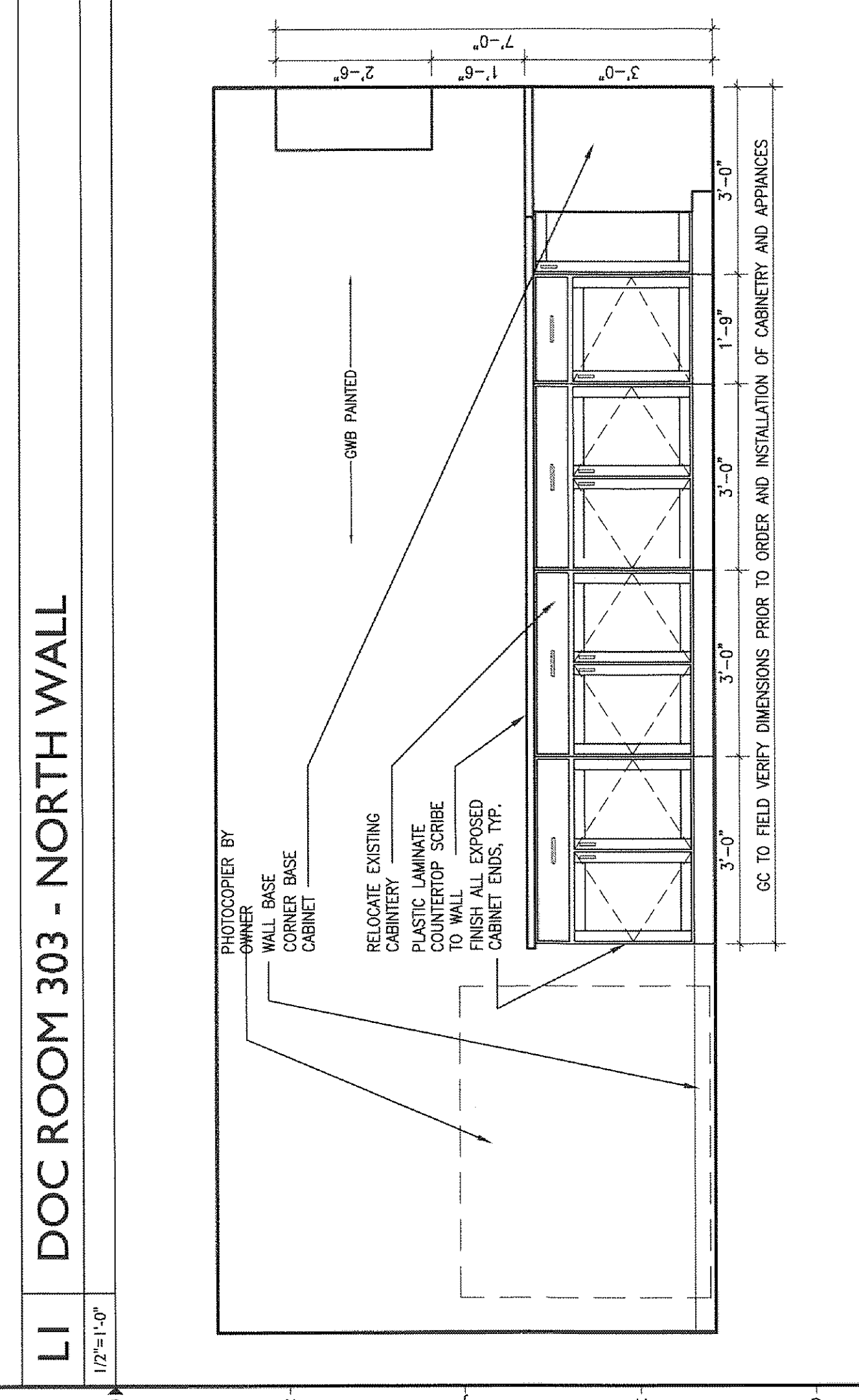
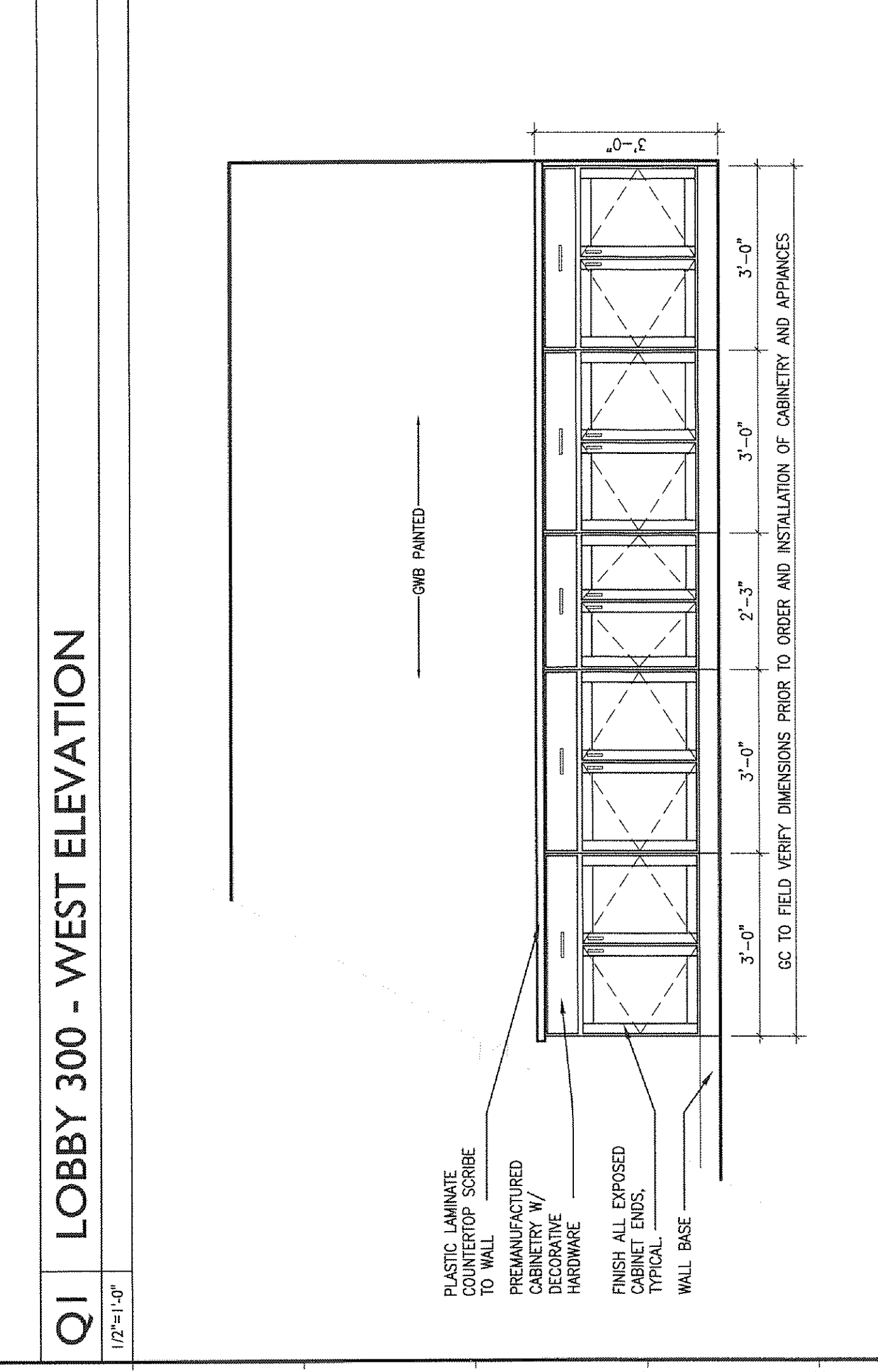
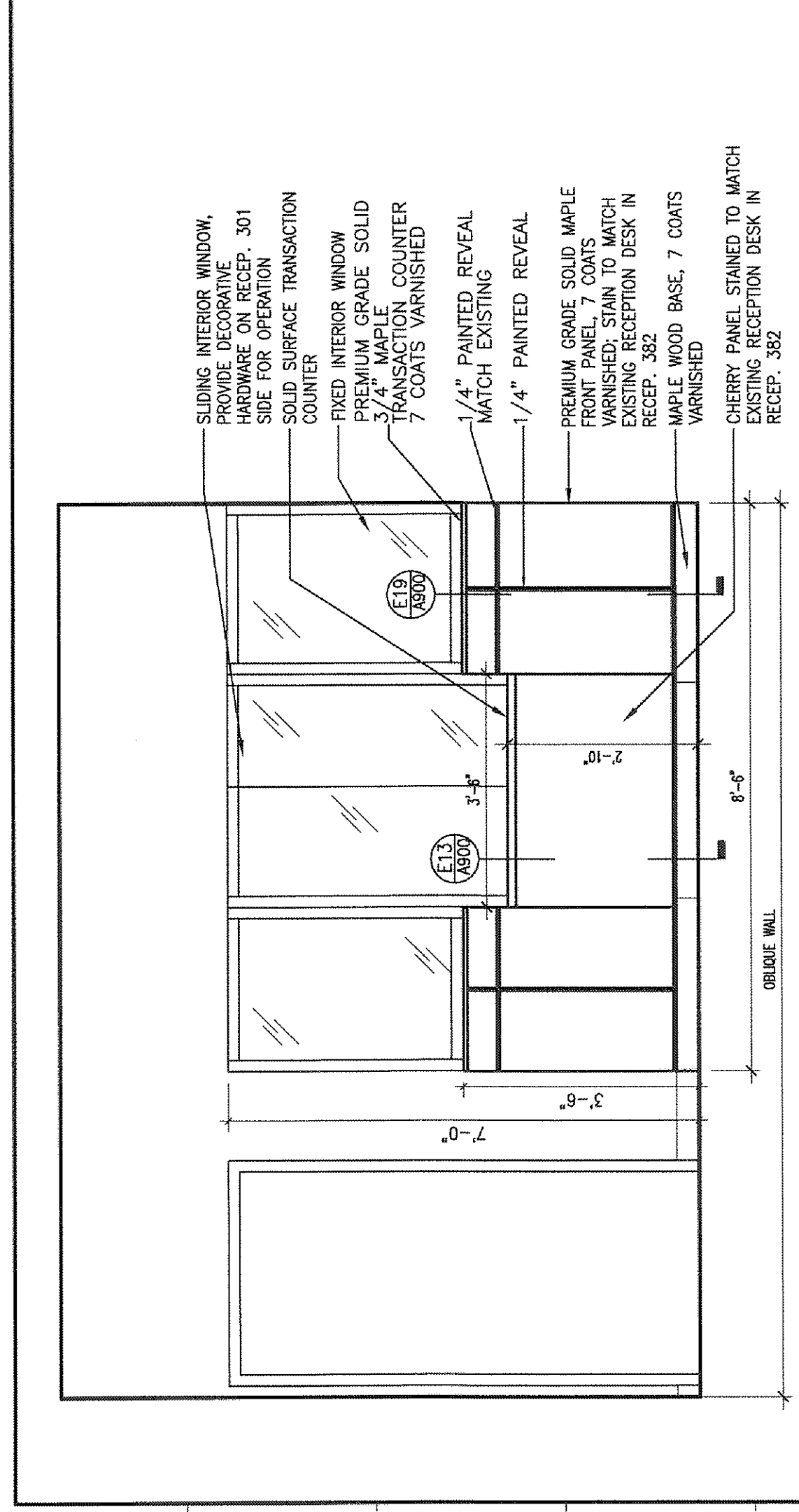
© COPYRIGHT 1985-2007  
ALL RIGHTS RESERVED BY  
GAWRON TURGEON ARCHITECTS & PLANNERS



WOMEN 376 SOUTH ELEVATION  
1/2"=1'-0"



DOC ROOM 303 - SOUTH WALL  
1/2"=1'-0"



DOC ROOM 303 - SOUTH WALL  
1/2"=1'-0"