

93R CUMBERLAND AVENUE

NEW SINGLE-FAMILY INFILL

OWNER  
Nancy Sotolongo  
95 Little John Road  
Yarmouth, ME 04096  
(207) 653-5307 (cell)  
bsolar9@hotmail.com

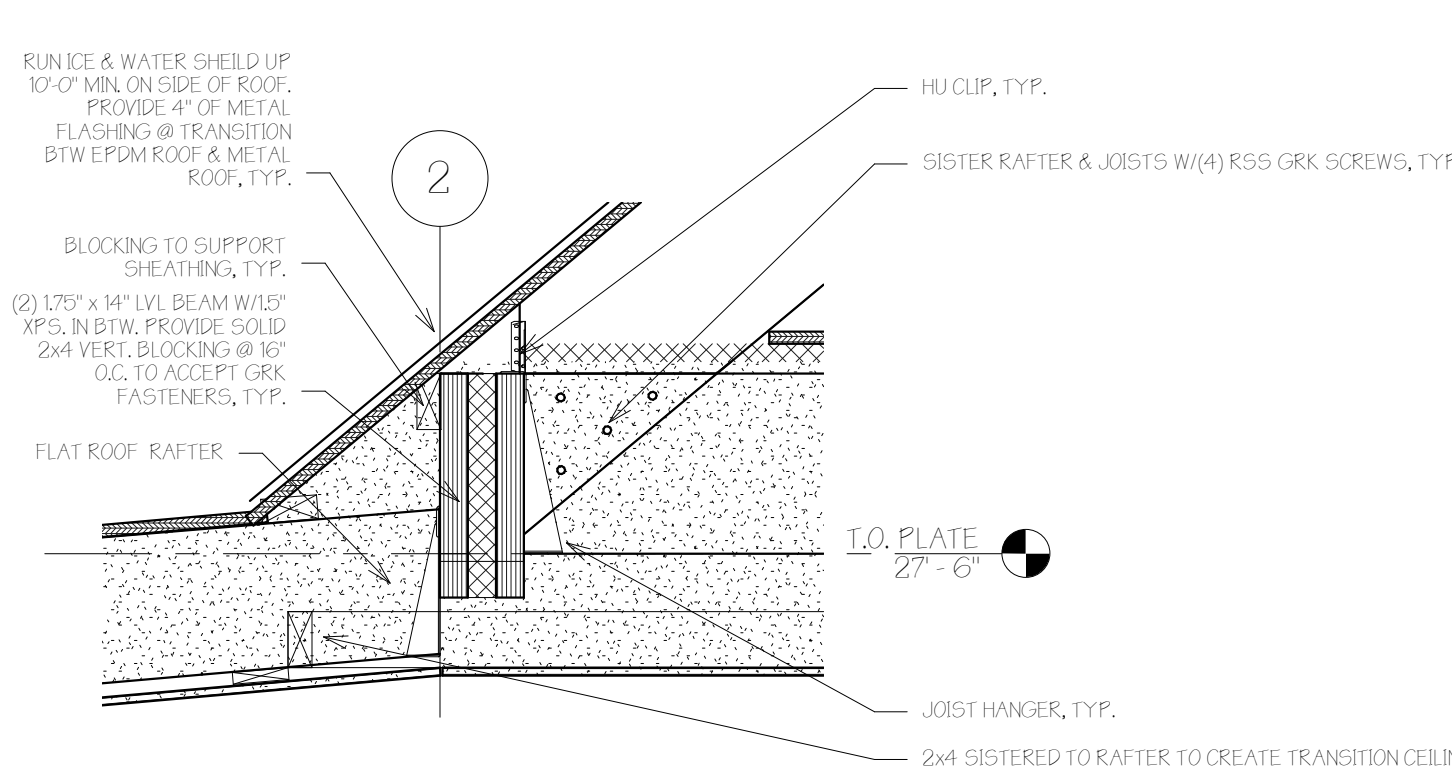


DEXTRIOUS CREATIVE

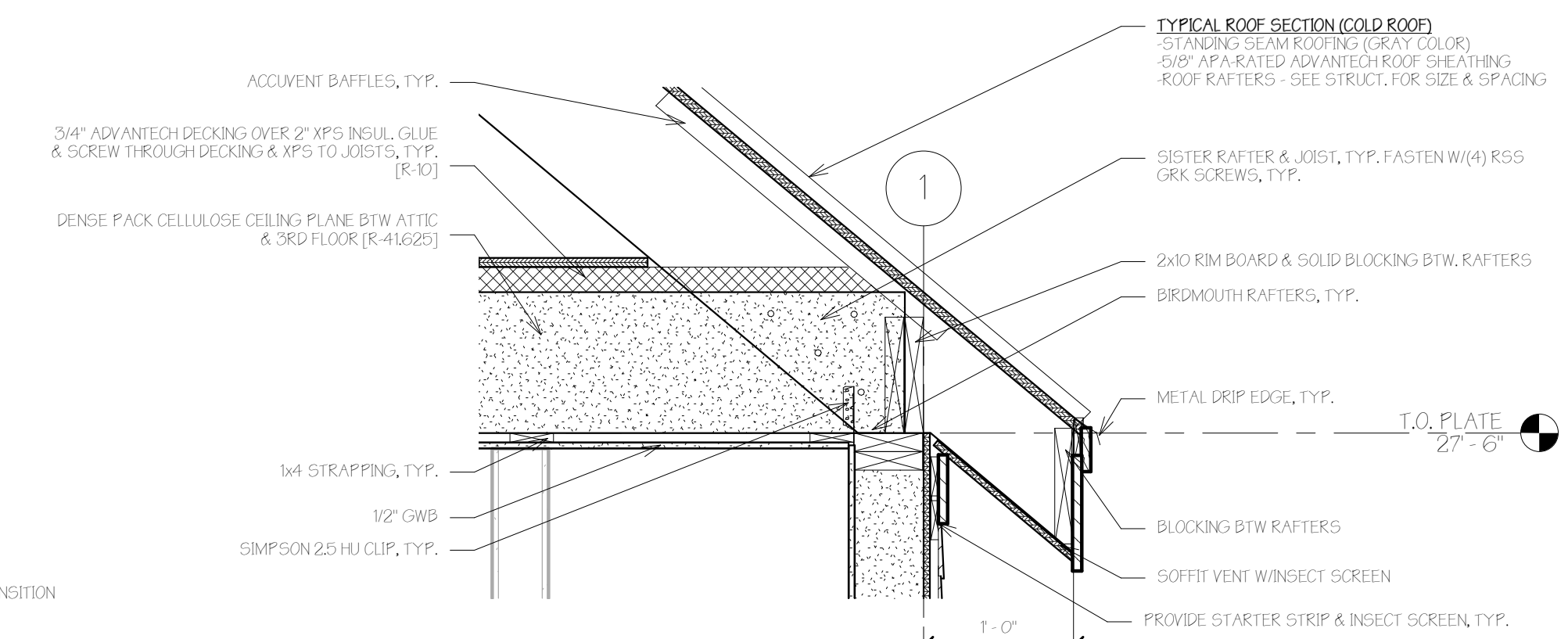
PORTLAND, ME 04102  
TRACIE REED, ARCHITECT  
12428, AIA, LEED AP BD+C  
traciereed@dextrouscreative.com  
207.653.0459 (cell)

PROJECT TEAM

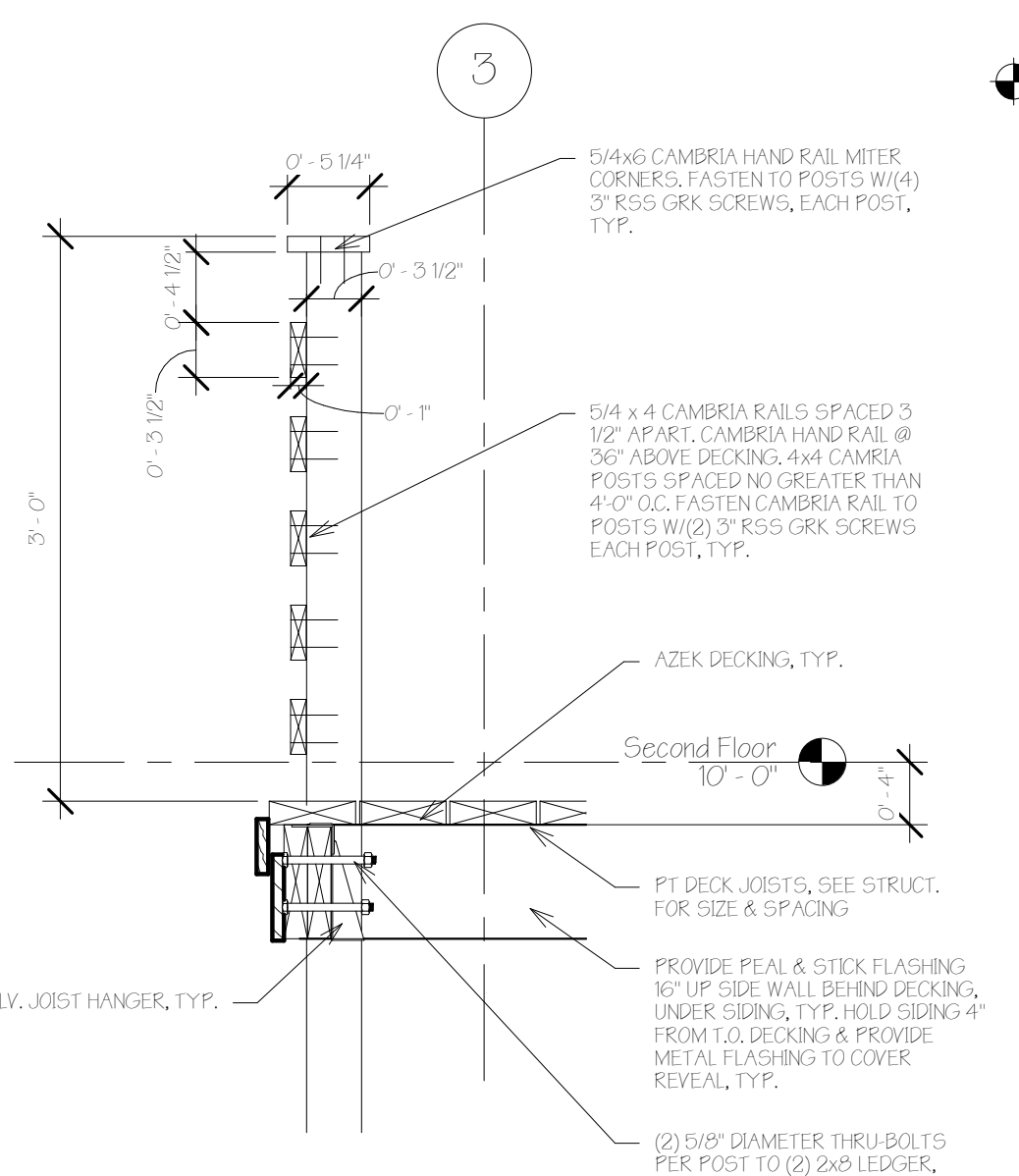
GENERAL CONTRACTOR  
Paul Grant  
Wally J. Staples Builders  
21 Greenwood Rd, Brunswick, ME 04011  
(207) 725-7700 (office)  
(207) 751-5533 (cell)  
paul@wallyjstaplesbuilders.com  
www.wallyjstaplesbuilders.com



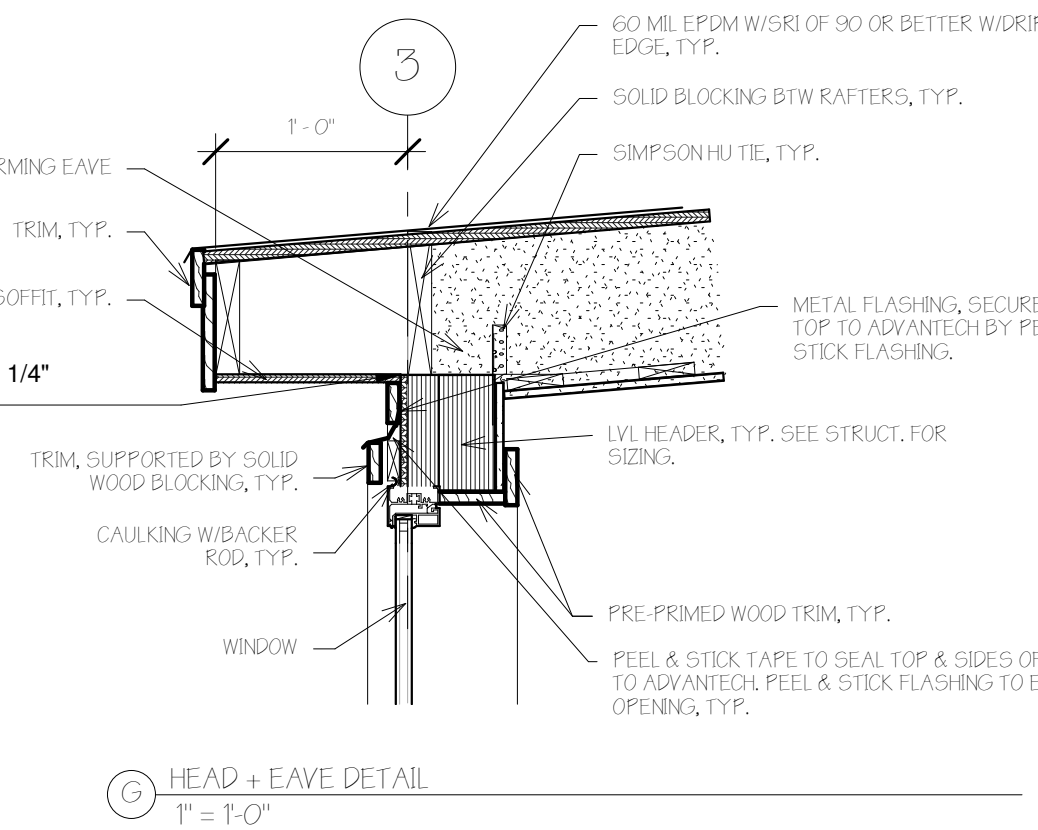
J ROOF TRANSITION DETAIL  
T = 1'-0"



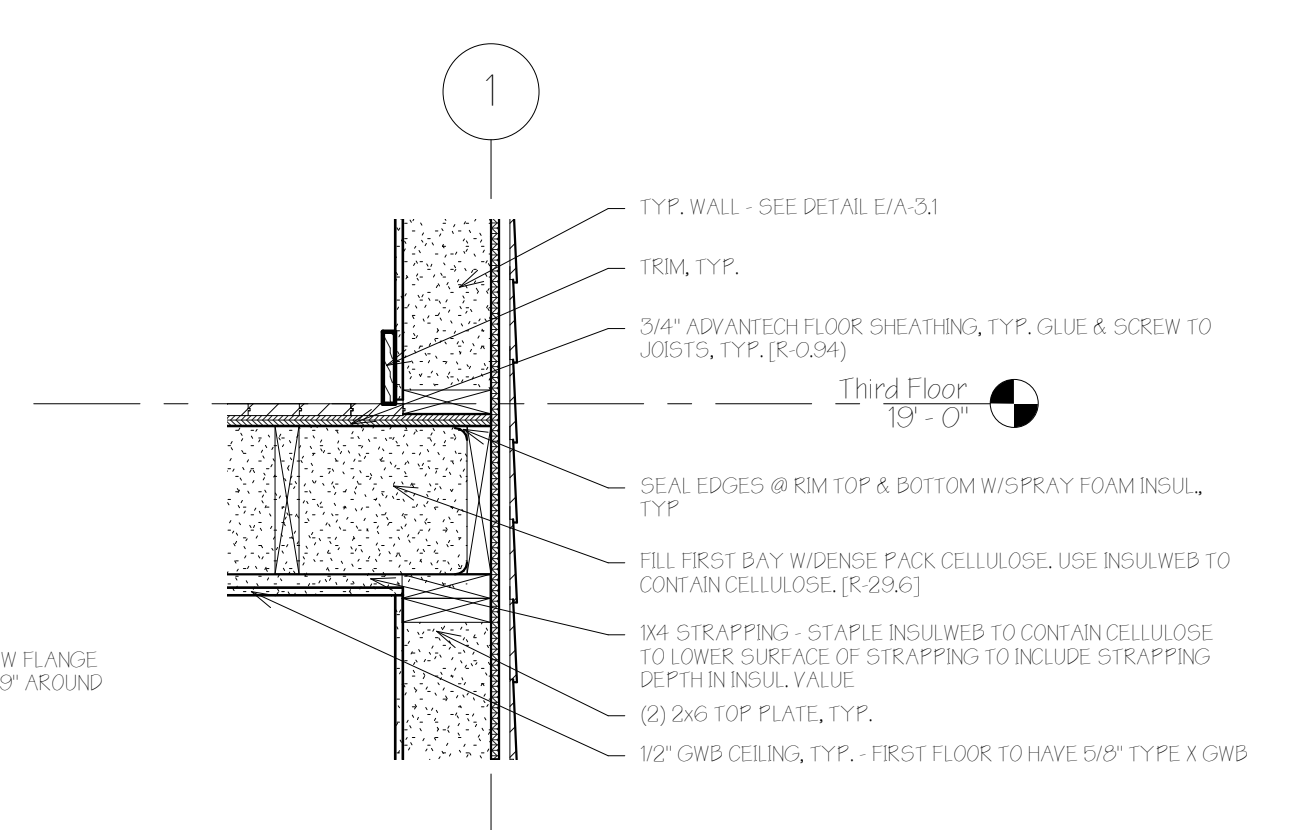
C TYPICAL ROOF & EAVE DETAIL  
T = 1'-0"



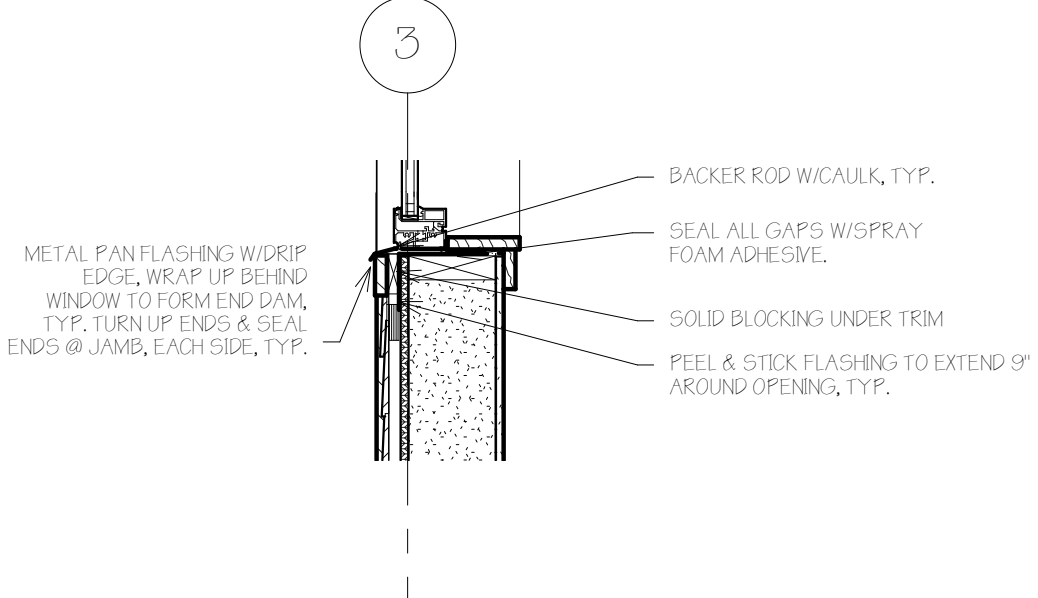
K TYPICAL DECK/RAIL DETAIL  
T = 1'-0"



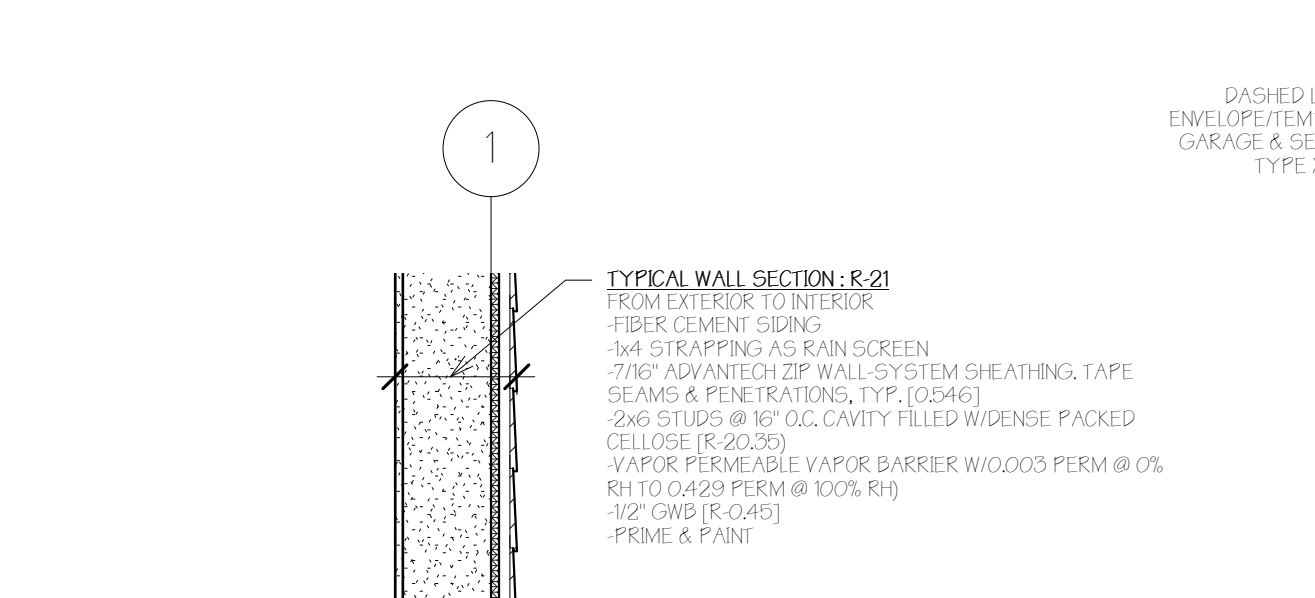
G HEAD + EAVE DETAIL  
T = 1'-0"



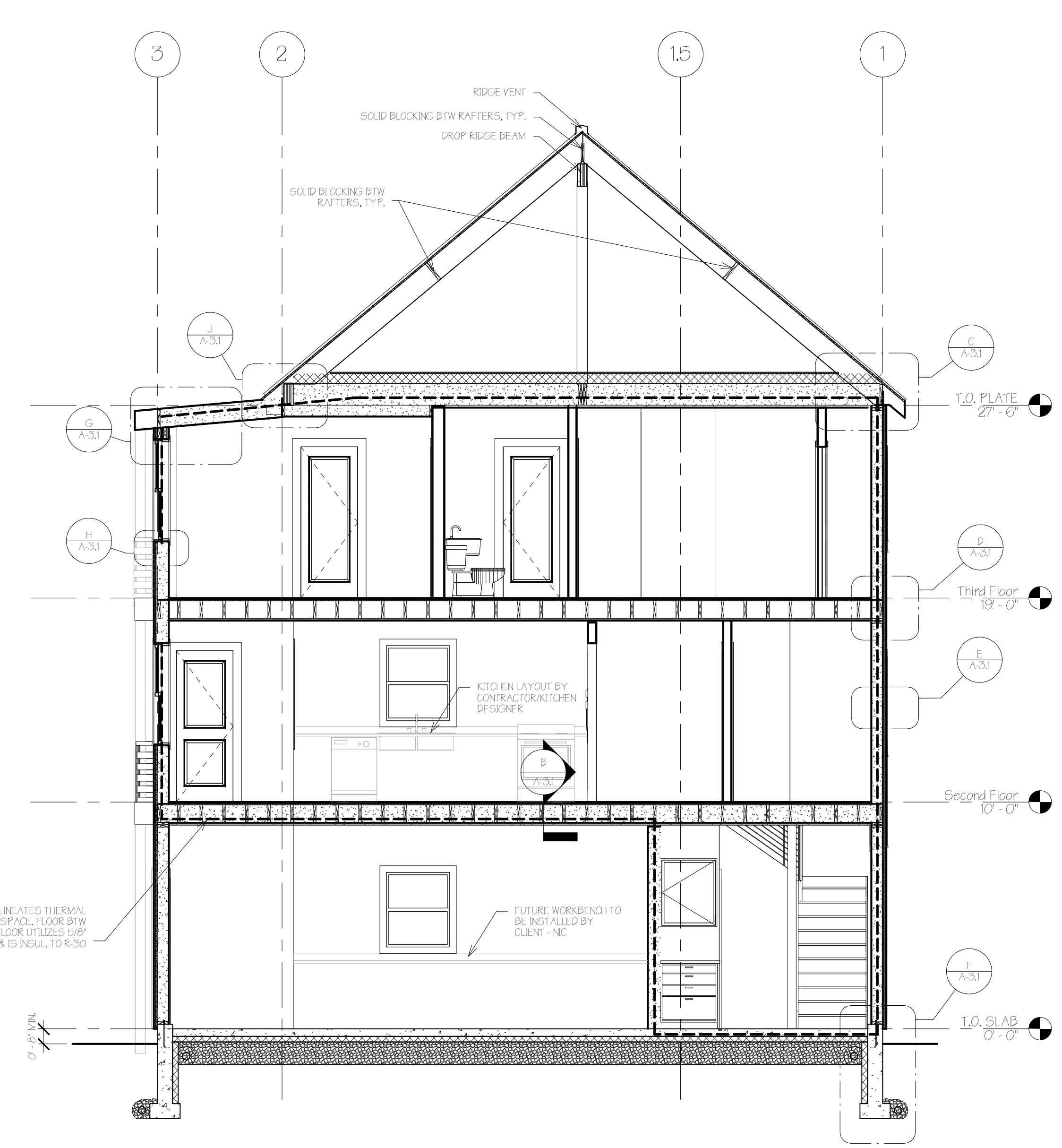
D TYPICAL RIM DETAIL  
T = 1'-0"



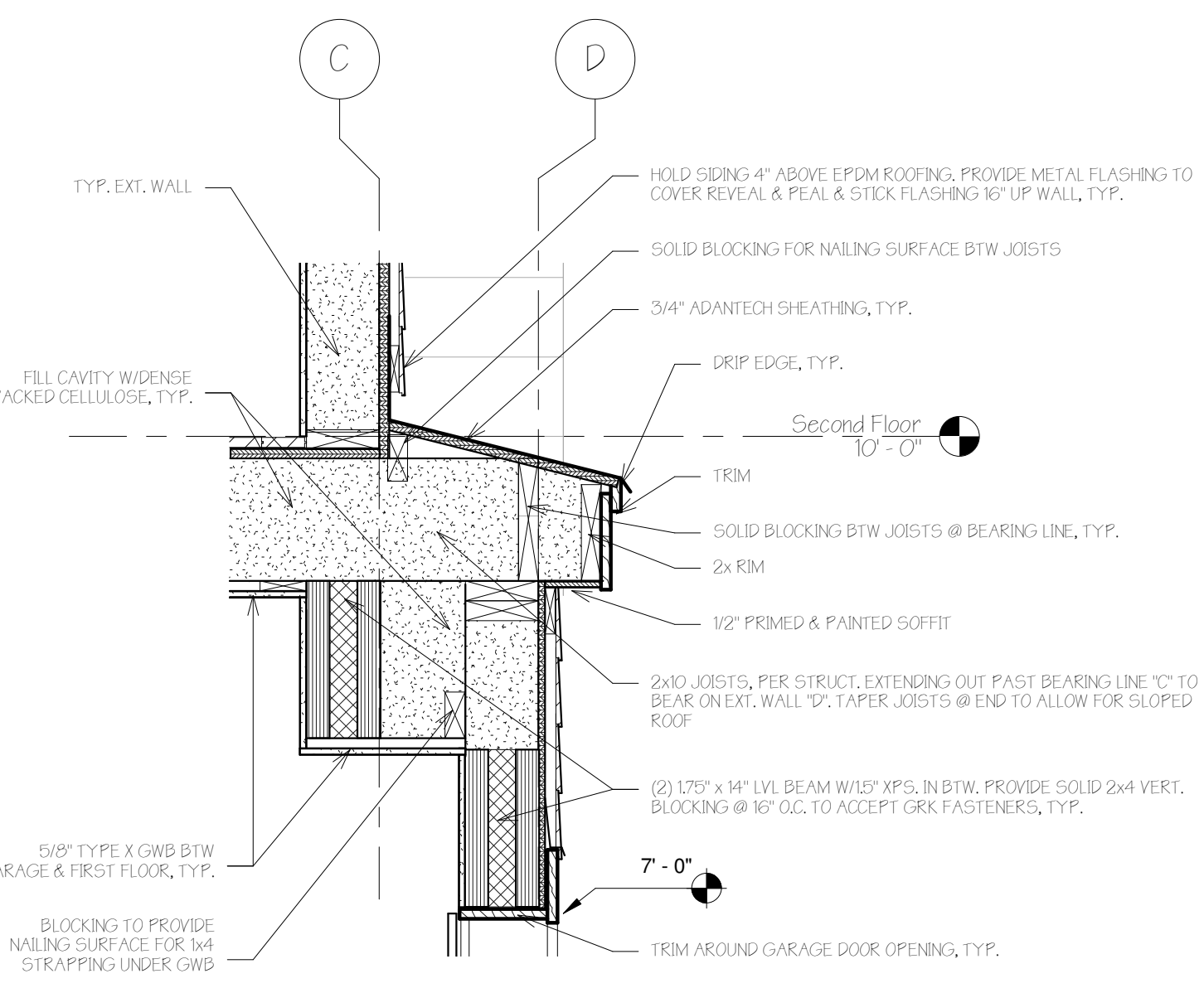
H SILL DETAIL  
T = 1'-0"



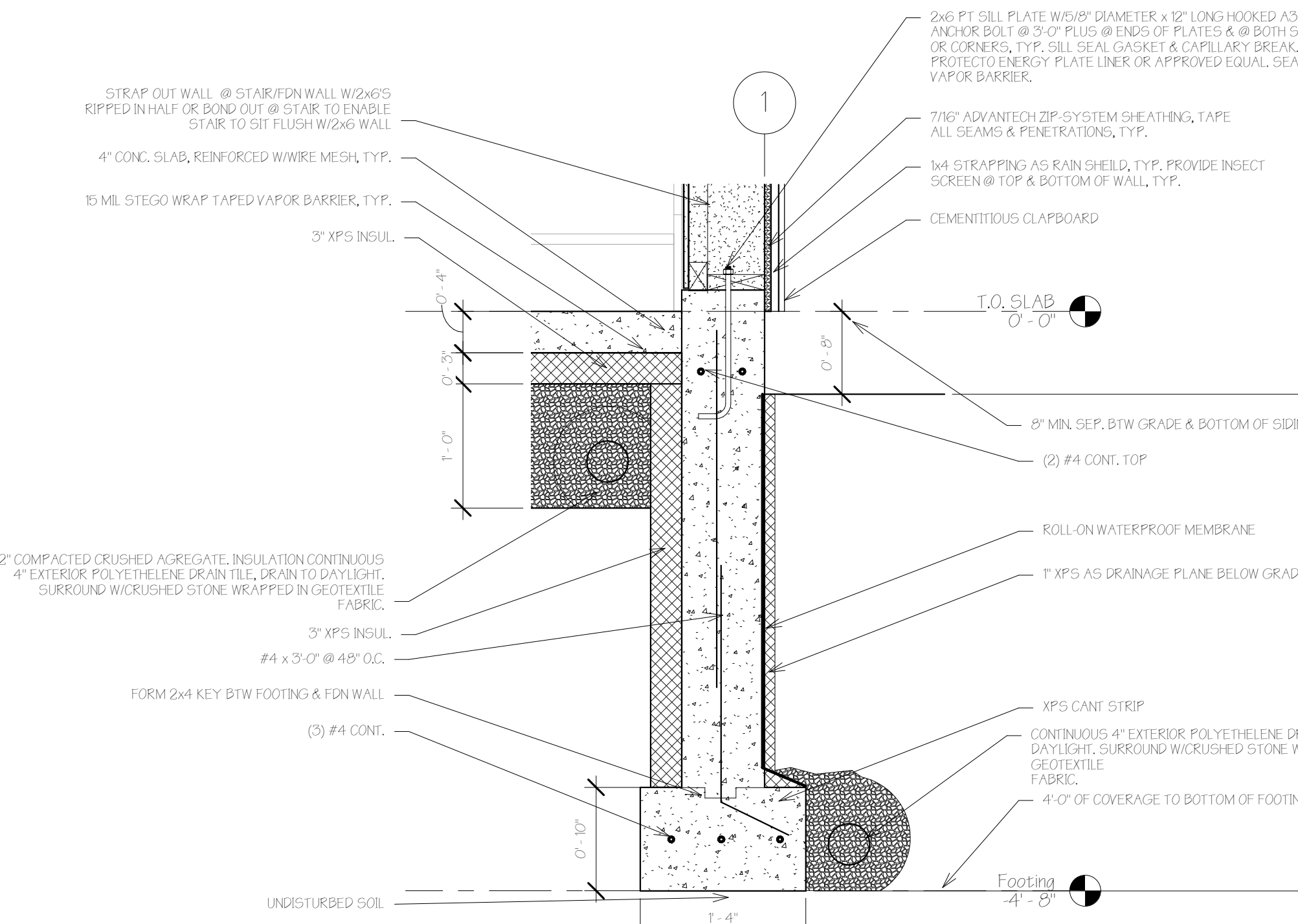
E TYPICAL WALL DETAIL  
T = 1'-0"



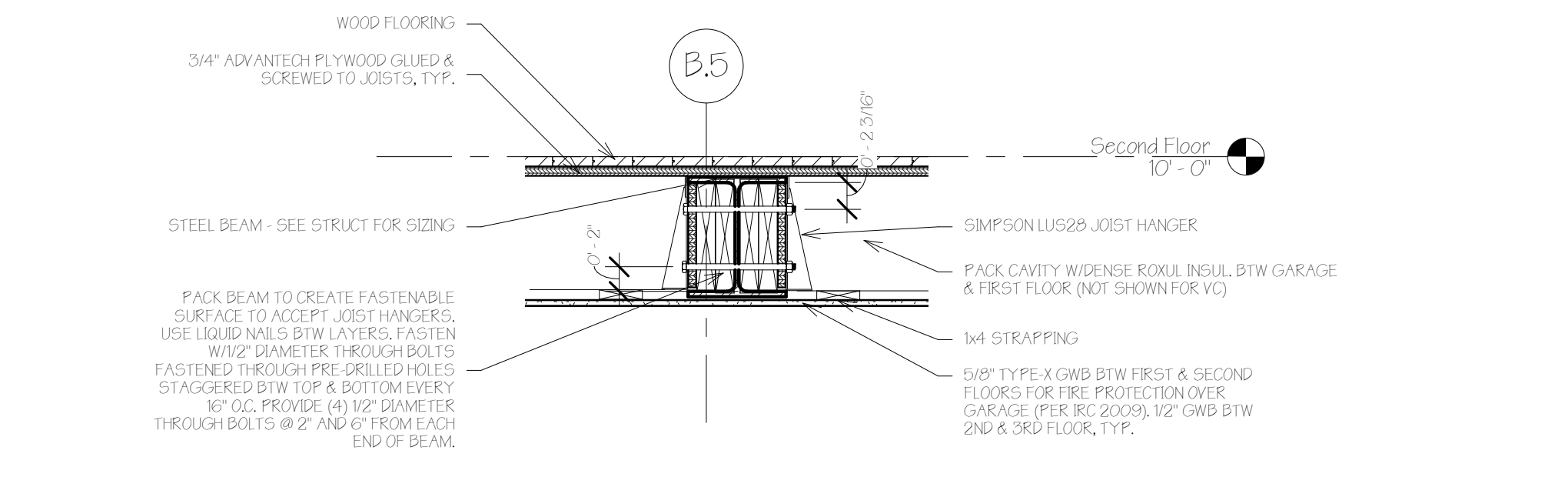
A TYPICAL BUILDING SECTION  
1/4" = 1'-0"



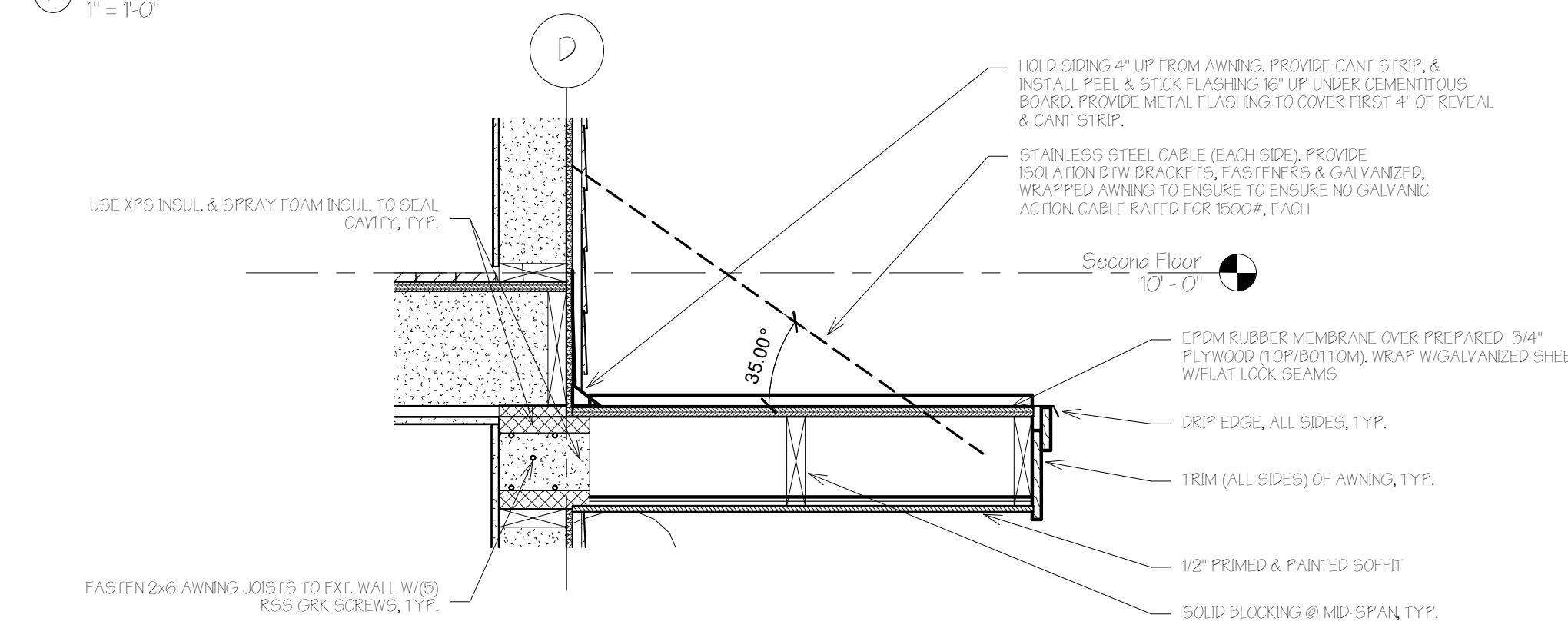
M SOUTH FACADE GARAGE OPENING DETAIL  
T = 1'-0"



F TYPICAL SILL, FDN & FOOTING DETAIL  
T = 1'-0"



B DETAIL @ STEEL BEAM - FLUSH FRAMED & PACKED  
T = 1'-0"



N ENTRANCE AWNING DETAIL  
T = 1'-0"

No.	Description	Date

SECTIONS	
Project number	16-16_73 Cumberland
Date	08.10.16
Drawn by	Author
Checked by	Checker
A-3.1	
Scale	As indicated

8/10/2016 10:01 AM