

93R CUMBERLAND AVENUE
NEW SINGLE-FAMILY INFILL

OWNER
Nancy Boulanger
855 Leslie John Road
Yamouth, ME 04096
(207) 633-3307 (cell)
nboulanger@hotmail.com



DEXTRIOUS CREATIVE
PORTLAND, ME 04102
TRACIE REED, ARCHITECT
NARB, AIA, LEED AP BD+C
traciereed@dextrouscreative.com
207-409-0459 (cell)

PROJECT TEAM

GENERAL CONTRACTOR
Paul Grant
Wally J. Staples Builders
21 Greenwood Rd. Brunswick, ME 04011
(207) 725-7102 (office)
(207) 751-8833 (cell)
paul@wallyjstaplesbuilders.com
www.wallyjstaplesbuilders.com

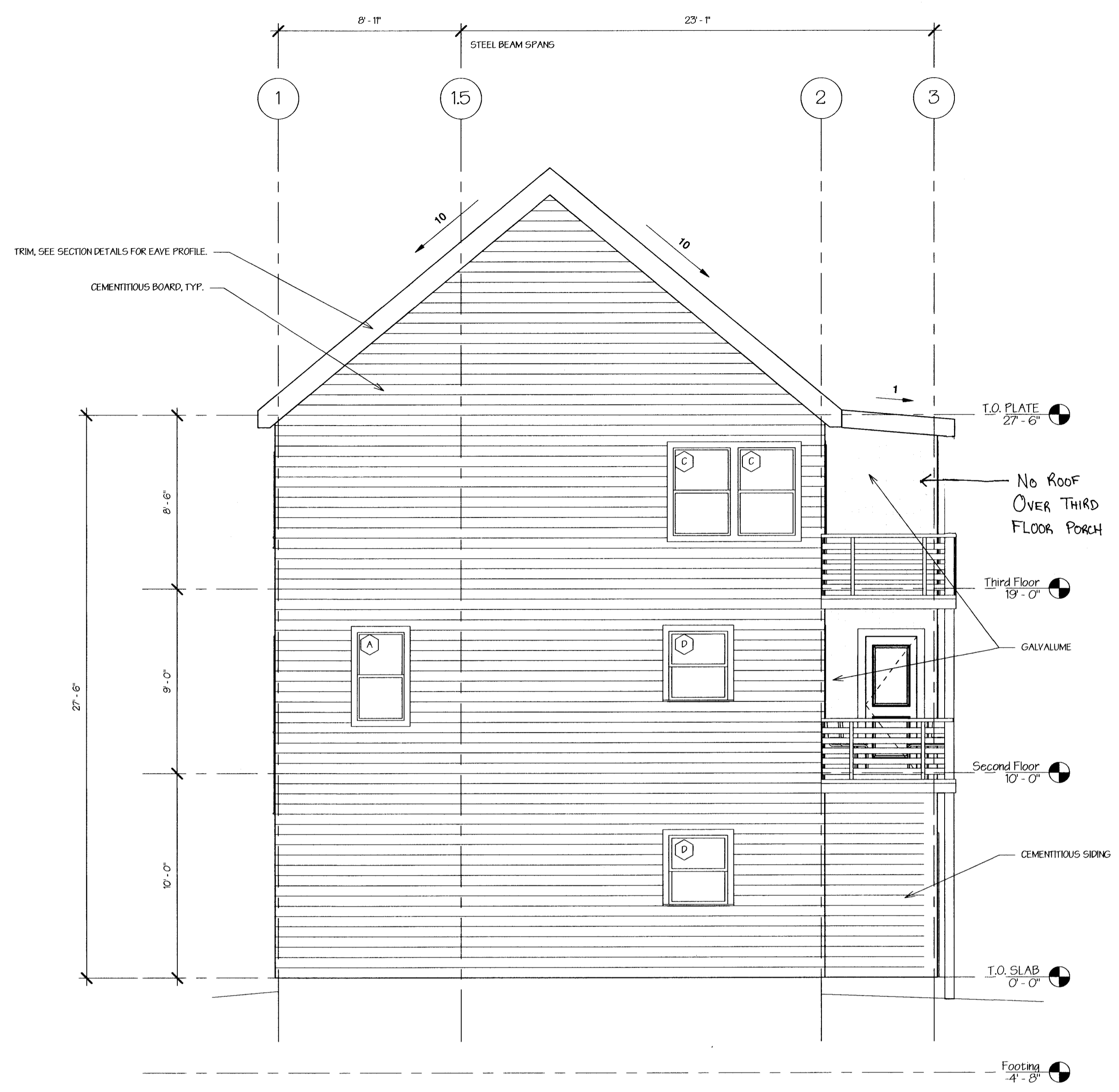
No.	Description	Date

NORTH & SOUTH ELEVATION

Project number 16-16_73 Cumberland
Date 08.10.16
Drawn by Author
Checked by Checker

A-2.1

Scale 1/4" = 1'-0"

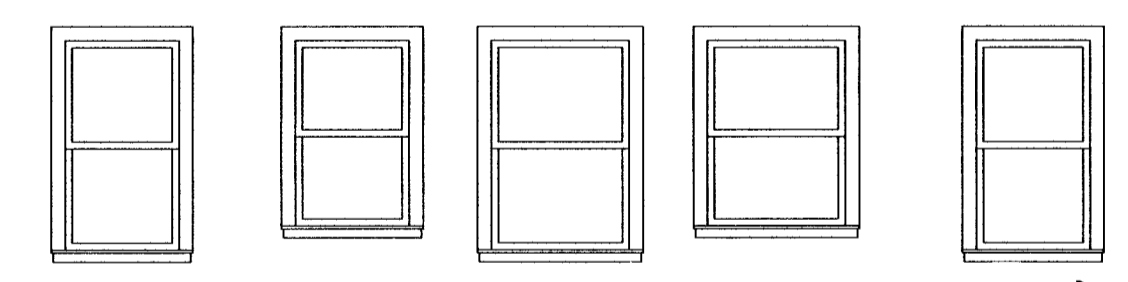


2 North
1/4" = 1'-0"



1 South
1/4" = 1'-0"

Type	Width	Height	Comments
A	2'-0 1/2"	4'-9 1/2"	
B	2'-6 1/2"	4'-0 1/2"	
C	3'-0 1/2"	4'-9 1/2"	
D	3'-6 1/2"	3'-4 1/2"	
E	2'-4 1/2"	4'-5 1/2"	



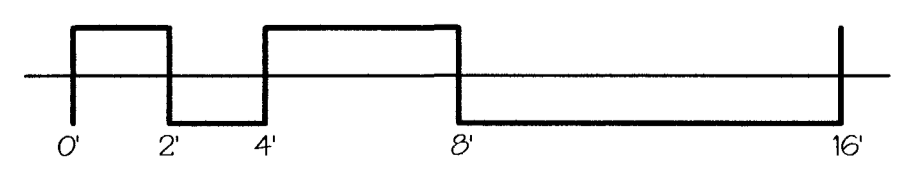
A (TW2442) DOUBLE HUNG
B (TW2310) DOUBLE HUNG
C (TW21042) DOUBLE HUNG
D (TW3432) DOUBLE HUNG
E (LW145L) SIMULATED DOUBLE HUNG-CASEMENT OPERATION FOR EMERGENCY EGRESS

Window Types
1/4" = 1'-0"

CONTRACTOR TO ENSURE THAT WINDOWS & DOORS REQUIRING SAFETY GLAZING PER IRC 2009 & ENERGY EFFICIENCY REQUIREMENTS OF IECC 2009 PER MISBEC. ROUGH OPENINGS SHOULD BE 1" WIDER THAN WINDOW. ALL SIZES: SEE DETAIL N/A-311 FOR INSTALLATION FLASHING DETAIL @ HEAD & SILL, TYP. SEE STRUCT. FOR HEADER SIZES. NOTE THAT WINDOW SIZES ARE GENERIC, CONTRACTOR TO MATCH TO SELECTED MANUFACTURER'S SIZING TABLE, TYP.

IRC 2009 SAFETY (TEMPERED) GLAZING REQUIRED
-IN ALL DOORS
-IN BATHROOMS
-GLAZING WITHIN 24" OF DOOR SWING IF SILL IS LESS THAN 60" AFF WALKING SURFACE
-GLAZING ADJACENT TO RAMPS OR STAIRS WITHIN 36" AFF OF HORIZONTAL WALKING SURFACE
-GLAZING WITH SILL HEIGHT OF LESS THAN 18" AFF

IECC 2009 MIN ENERGY REG.
-WINDOWS: U-0.35
-SKYLIGHT: U-0.6



8/10/2016 11:03:35 AM