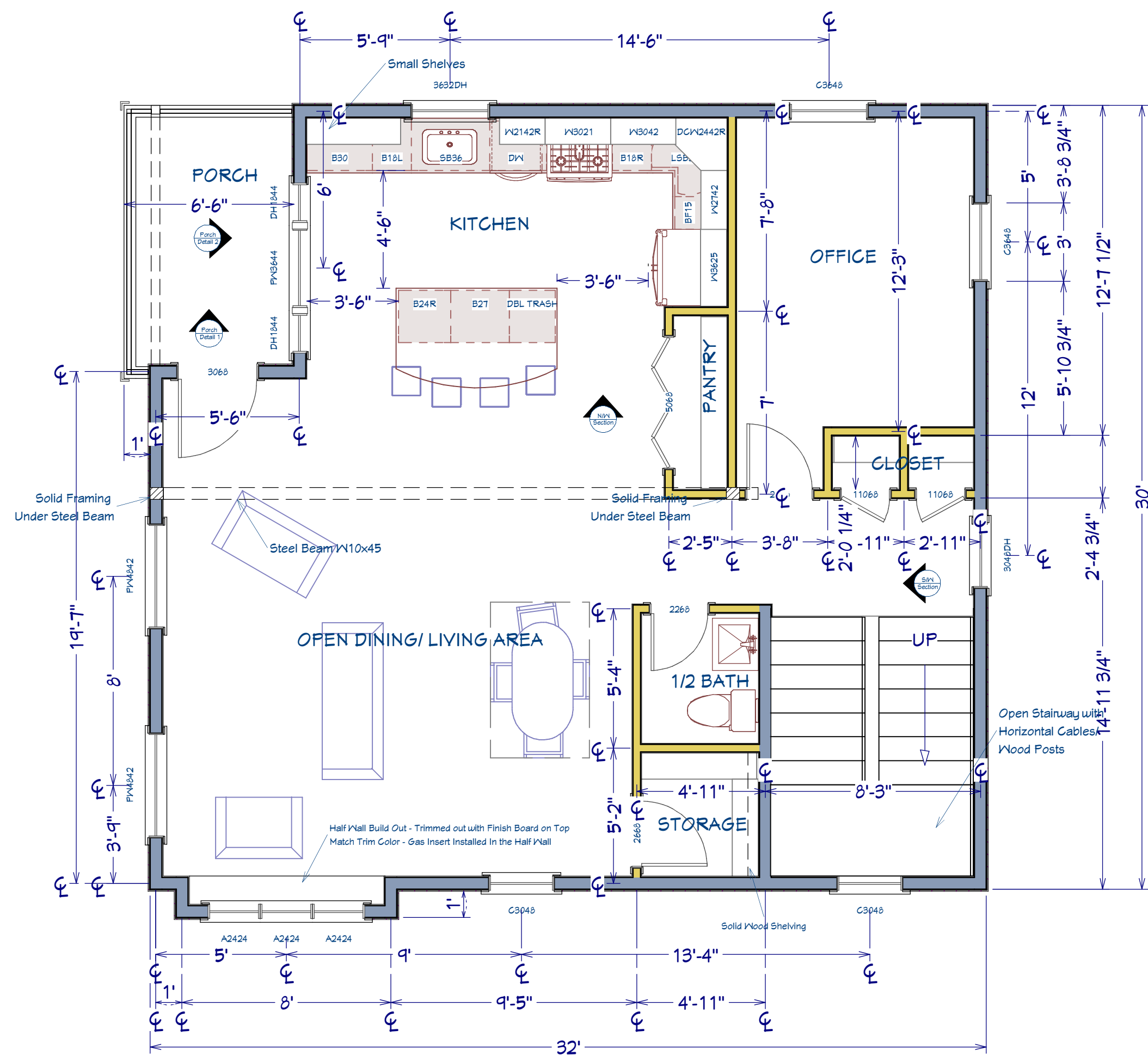
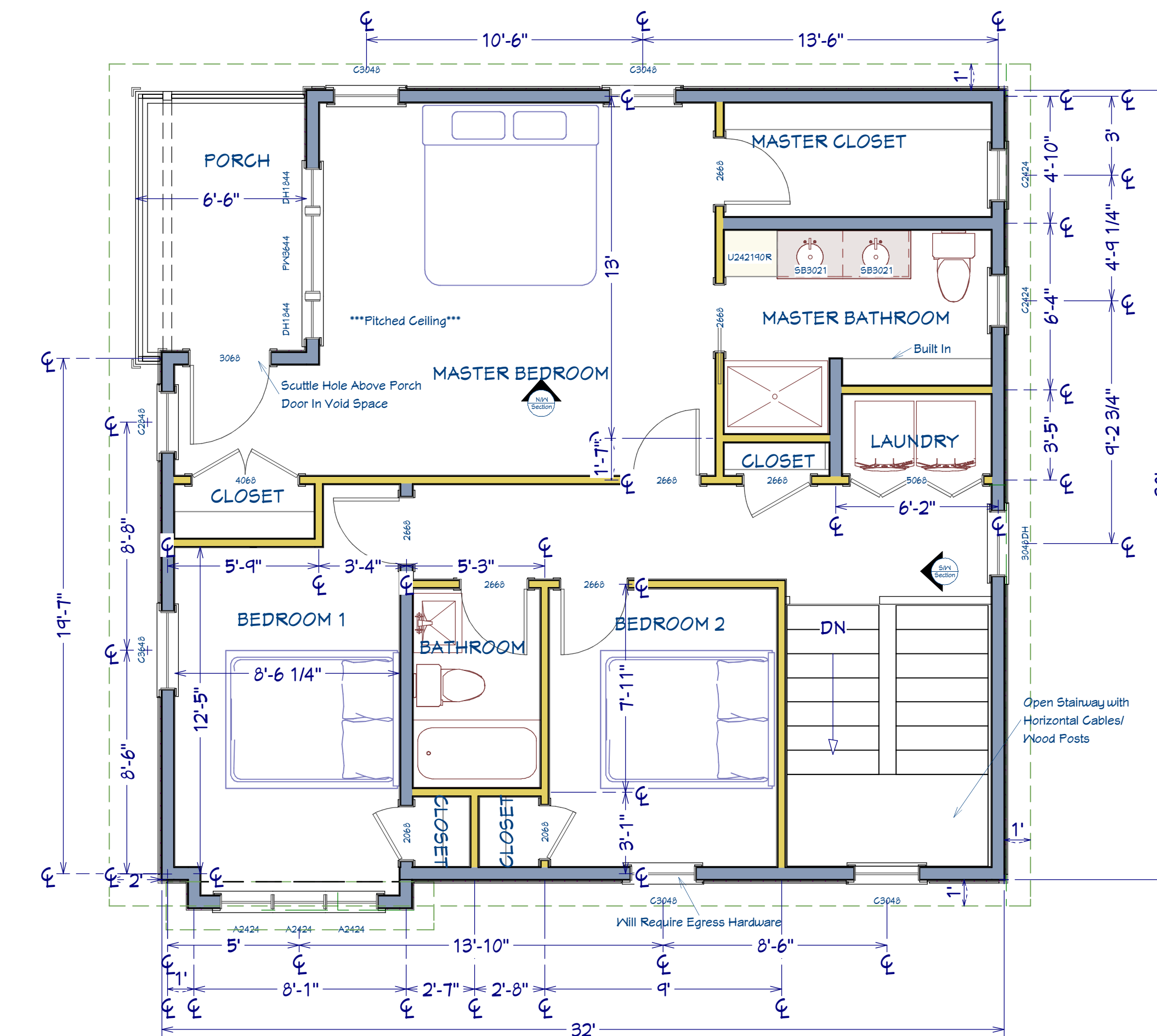


Garage/ Ground Floor 1/4 in = 1 ft



1st Floor 1/4 in = 1 ft



2nd Floor 1/4 in = 1 ft

WINDOW LEGEND

#	LOCATION	CALL OUT	TYPE	SIZE	MANUFACTURER
2	GARAGE	3048DH	DOUBLE HUNG	30"X48"	MATTHEWS BROTHERS - HANCOCK
2	OFFICE	C3648	CASEMENT	36"X48"	MATTHEWS BROTHERS - HANCOCK
1	STAIRWELL 1ST FLOOR	C3048	CASEMENT	30"X48"	MATTHEWS BROTHERS - HANCOCK
1	TOP OF STAIRS HALLWAY 1ST	3048DH	DOUBLE HUNG	30"X48"	MATTHEWS BROTHERS - HANCOCK
1	LIVING ROOM	C3048	CASEMENT	30"X48"	MATTHEWS BROTHERS - HANCOCK
1	KITCHEN	3642DH	DOUBLE HUNG	36"X42"	MATTHEWS BROTHERS - HANCOCK
1	LIVING ROOM	PW4842	PICTURE WINDOW	48"X42"	MATTHEWS BROTHERS - HANCOCK
1	KITCHEN PORCH	DH1844-PW3644-DH1844	DH-CASEMENT-DH	71.5"X44"	MATTHEWS BROTHERS - HANCOCK
1	BEDROOM 2	C3048	CASEMENT (EGRESS HARDWARE)	30"X48"	MATTHEWS BROTHERS - HANCOCK
1	STAIRWELL	C3048	CASEMENT	30"X48"	MATTHEWS BROTHERS - HANCOCK
2	MASTER BEDROOM	C3048	CASEMENT	30"X48"	MATTHEWS BROTHERS - HANCOCK
1	BEDROOM 1	C3648	CASEMENT	36"X48"	MATTHEWS BROTHERS - HANCOCK
1	MASTER BEDROOM	C2848	CASEMENT	28"X48"	MATTHEWS BROTHERS - HANCOCK
1	MASTER BATHROOM	C2424	CASEMENT	24"X24"	MATTHEWS BROTHERS - HANCOCK
1	MASTER CLOSET	C2424	CASEMENT	24"X24"	MATTHEWS BROTHERS - HANCOCK
1	TOP OF STAIRS HALLWAY 2ND	3048DH	DOUBLE HUNG	30"X48"	MATTHEWS BROTHERS - HANCOCK
1	MASTER BEDROOM PORCH	DH1844-PW3644-DH1844	DH-CASEMENT-DH	71.5"X44"	MATTHEWS BROTHERS - HANCOCK
1	MASTER BEDROOM HIGH	PW2824	PICTURE WINDOW	28"X24"	MATTHEWS BROTHERS - HANCOCK
1	BEDROOM BUMP OUT	A2424-A2424-A2424	(3) AWNINGS	71"X24"	MATTHEWS BROTHERS - HANCOCK
1	LIVING ROOM BUMP OUT	A2424-A2424-A2424	(3) AWNINGS	71"X24"	MATTHEWS BROTHERS - HANCOCK

Note: All Ceilings 8'-0" Except Master Bedroom

Note: Oil Rubbed Bronze- Hinges, Lock Sets, Door Hardware

NOTE: Doors Dimensioned in Feet
Windows Dimensioned in Inches

NO.	DESCRIPTION	BY	DATE
1	Plans/ Elevations	AA	2/9/16
2	Plans/ Elevations	AA	2/24/16
3	Edits	AA	3/3/16
4	Details	AA	4/1/16

Plans

SHEET TITLE:

PROJECT DESCRIPTION:
Boulanger - New Home
 93R Cumberland Ave.
 Portland Maine

DRAWINGS PROVIDED BY DESIGNER:
 Angela Abbott

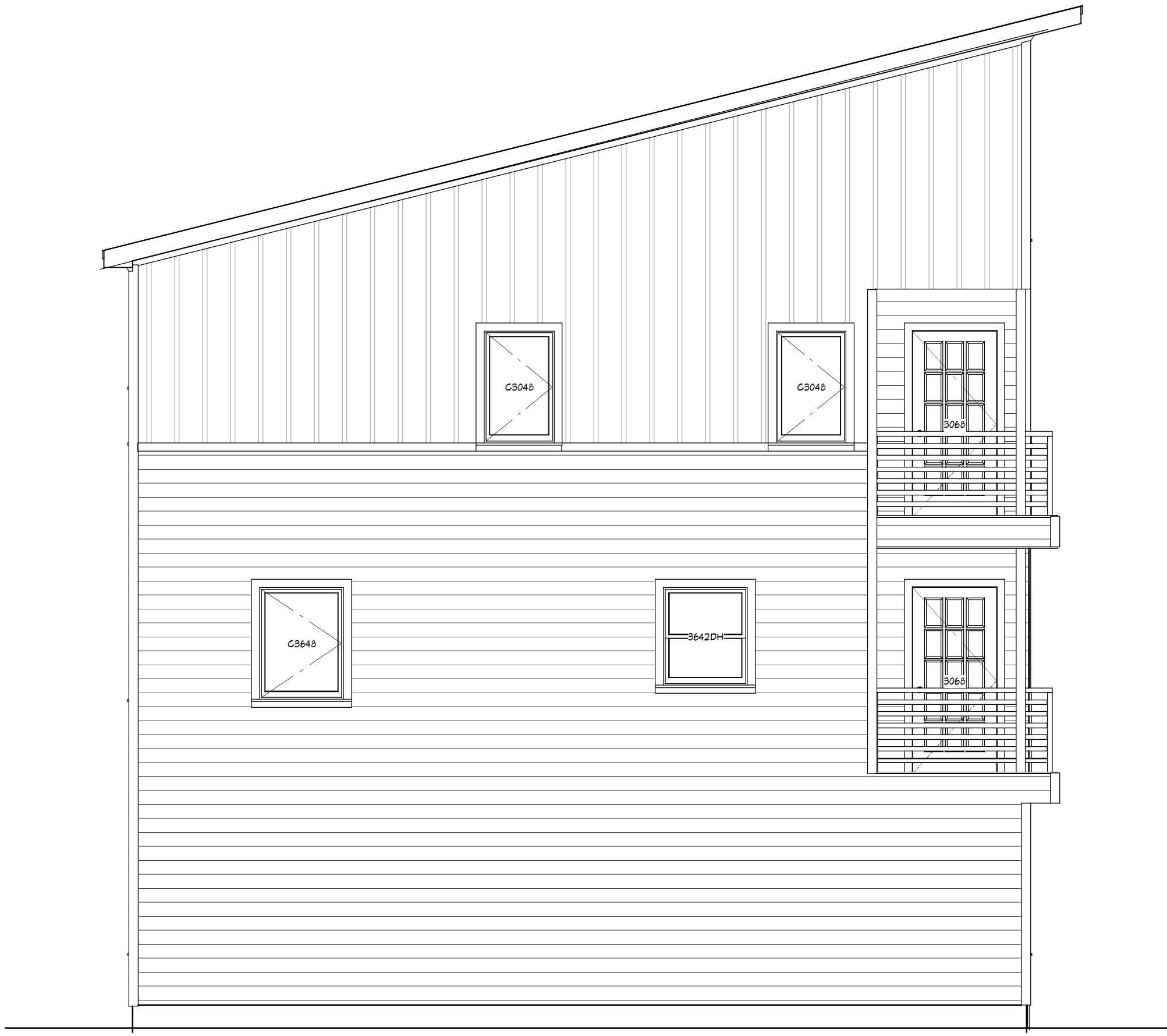
DATE:
 6/16/2016

SCALE:
 1'-0" = 1/4"

SHEET:
A-1



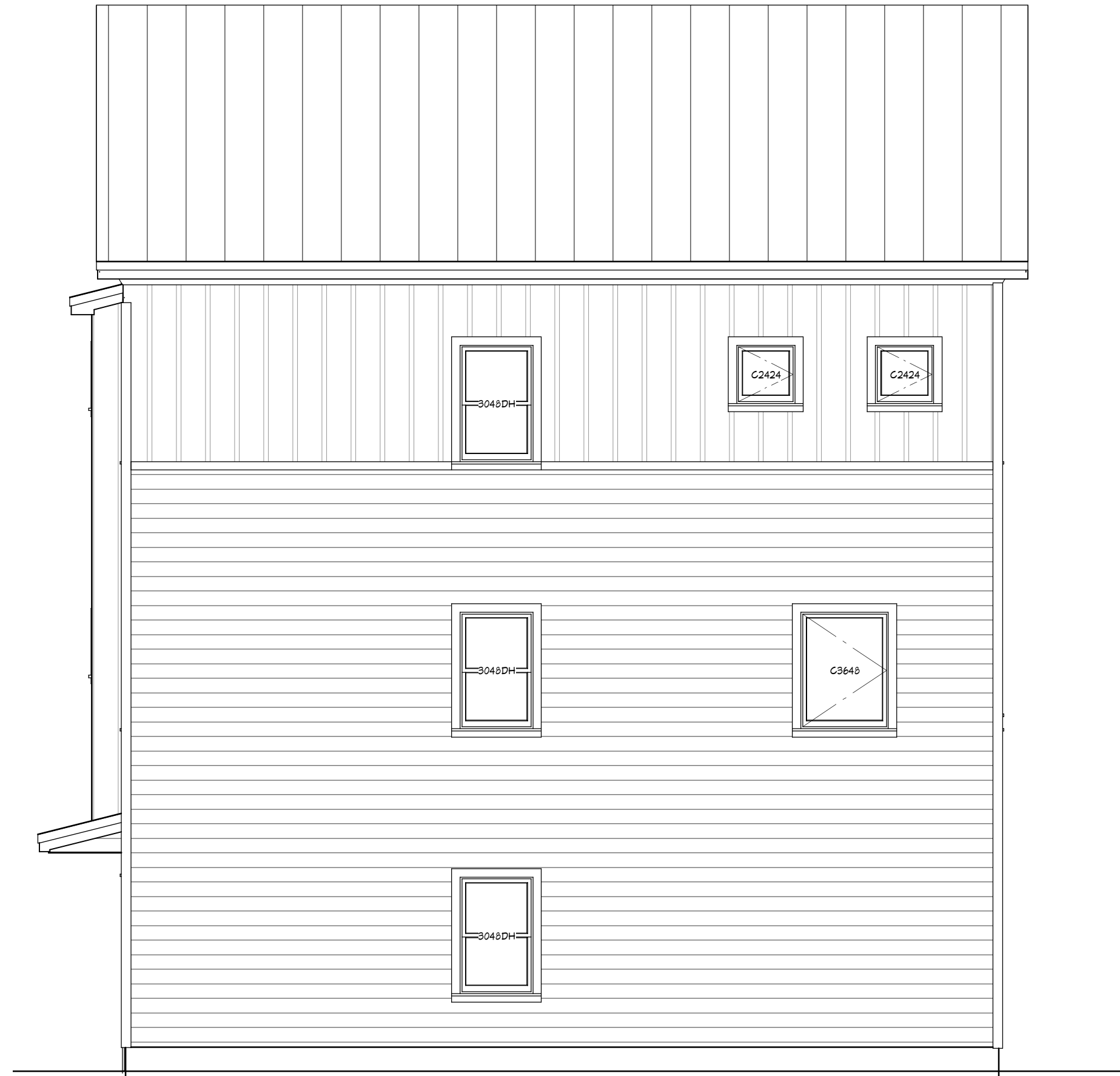
Exterior Elevation Front 1/4 in = 1 ft



Exterior Elevation Back 1/4 in = 1 ft



Exterior Elevation Left 1/4 in = 1 ft



Exterior Elevation Right 1/4 in = 1 ft

Note: Roofing/Siding/ Trim

Roofing - Cityscape- Everlast

Upper Siding and Bump Out- Vertical Metal -
AZ55 Acrylic Coated Galvalume - Everlast

Lower Siding - Boothbay Blue - James Hardy Cement Siding

Trim and Corner Boards - Refreshing Tea - Behr

NOTE: Doors Dimensioned in Feet
Windows Dimensioned in Inches

NO.	DESCRIPTION	BY	DATE
1	Plans/ Elevations	AA	2/9/16
2	Plans/ Elevations	AA	2/24/16
3	Edits	AA	3/3/16
4	Details	AA	4/1/16

SHEET TITLE:
Elevations

PROJECT DESCRIPTION:
Boulanger - New Home
93R Cumberland Ave.
Portland Maine

DRAWINGS PROVIDED
BY DESIGNER:
Angela Abbott

DATE:
6/16/2016

SCALE:
1'-0" = 1/4"

SHEET:
A-2

NO.	DESCRIPTION	BY	DATE
1	Plans / Elevations	AA	2/9/16
2	Plans / Elevations	AA	2/24/16
3	Edits	AA	3/3/16
4	Details	AA	4/1/16

SHEET TITLE:
Sections

PROJECT DESCRIPTION:
Boulanger - New Home
 93R Cumberland Ave.
 Portland Maine

DRAWINGS PROVIDED BY DESIGNER:
 Angela Abbott

DATE:
 6/16/2016

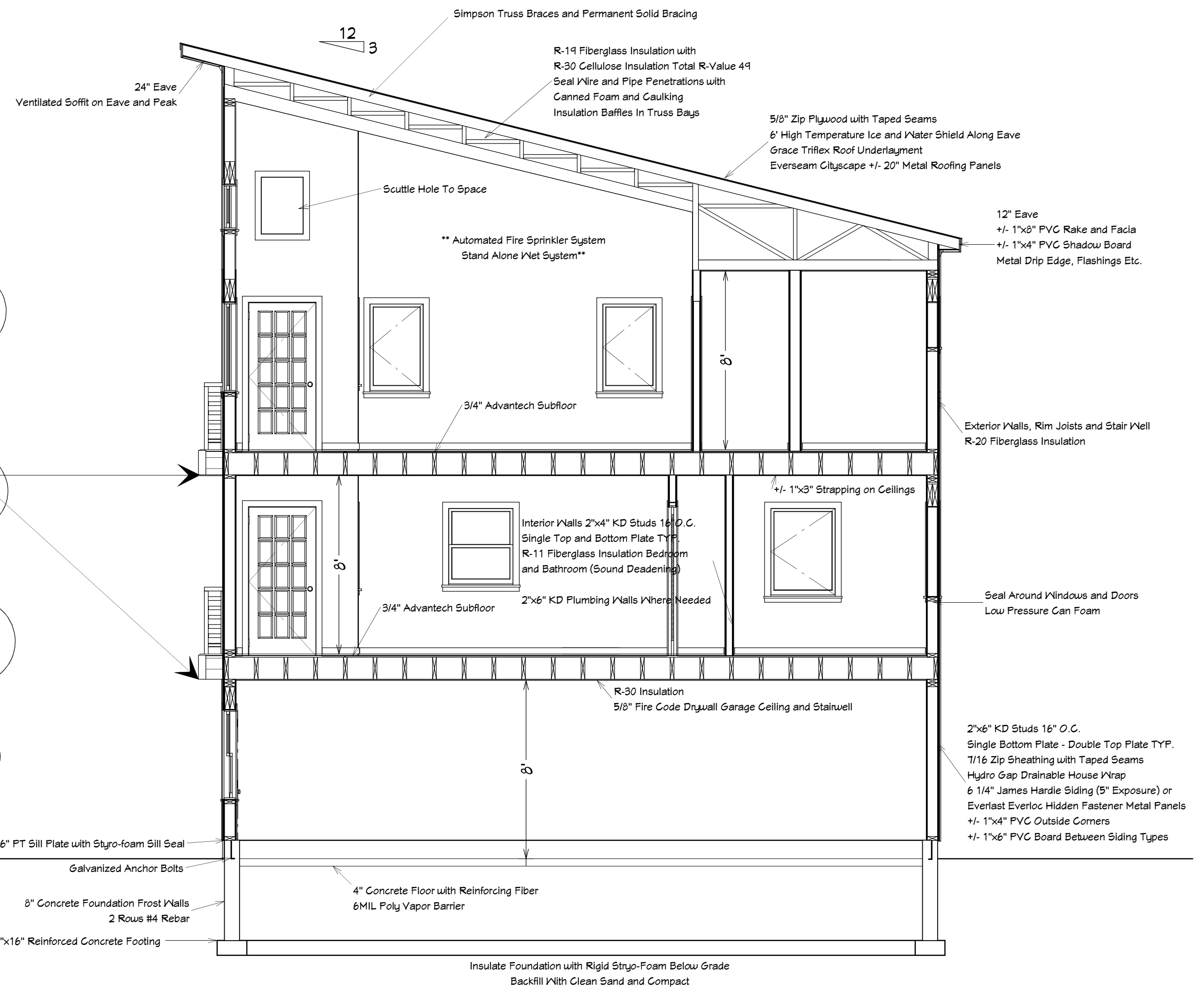
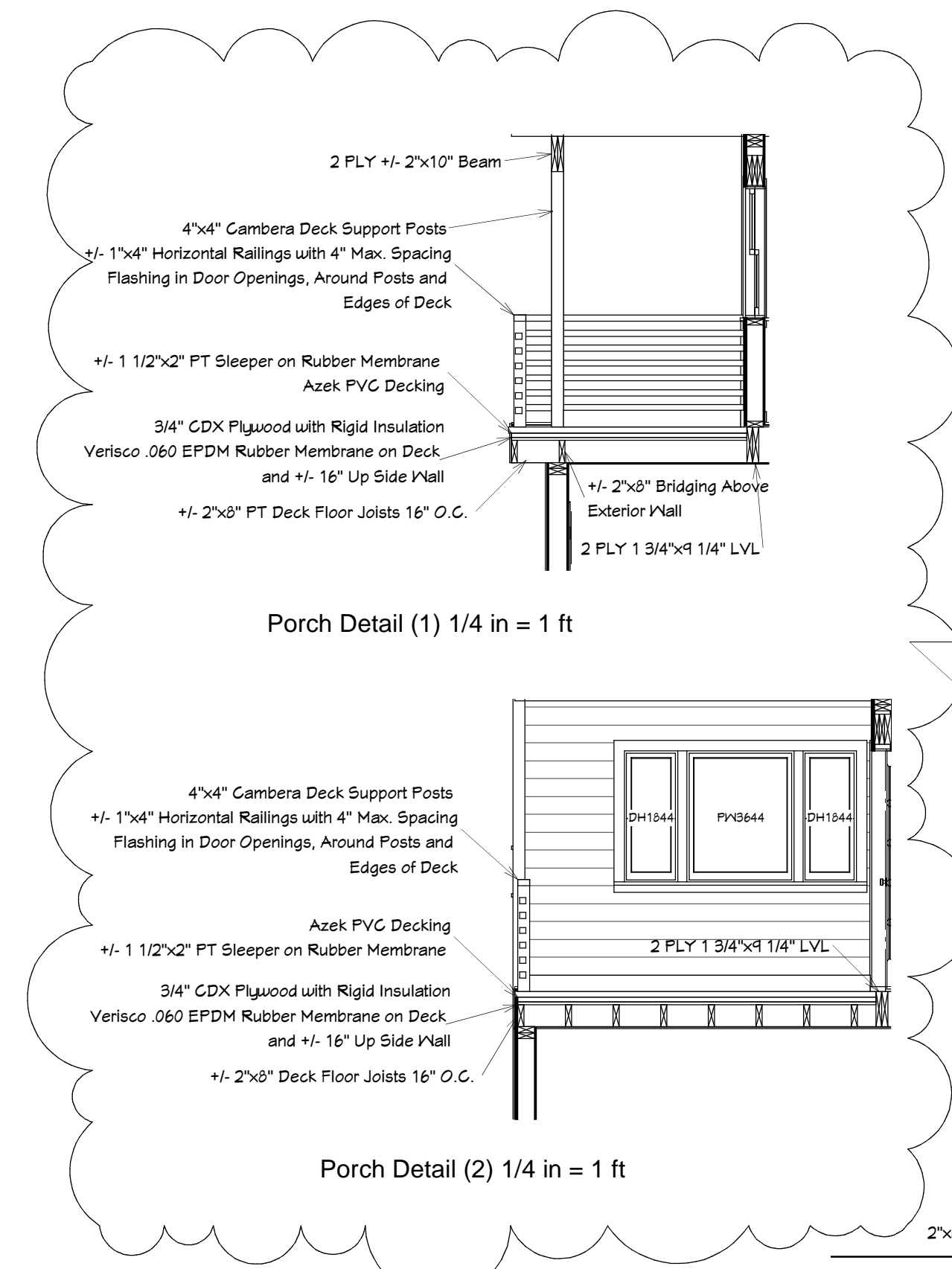
SCALE:
 1'-0" = 1/4"

SHEET:

A-3



South West Section 1/4 in = 1 ft



North/West Section 1/4 in = 1 ft

NOTE: Doors Dimensioned in Feet
Windows Dimensioned in Inches