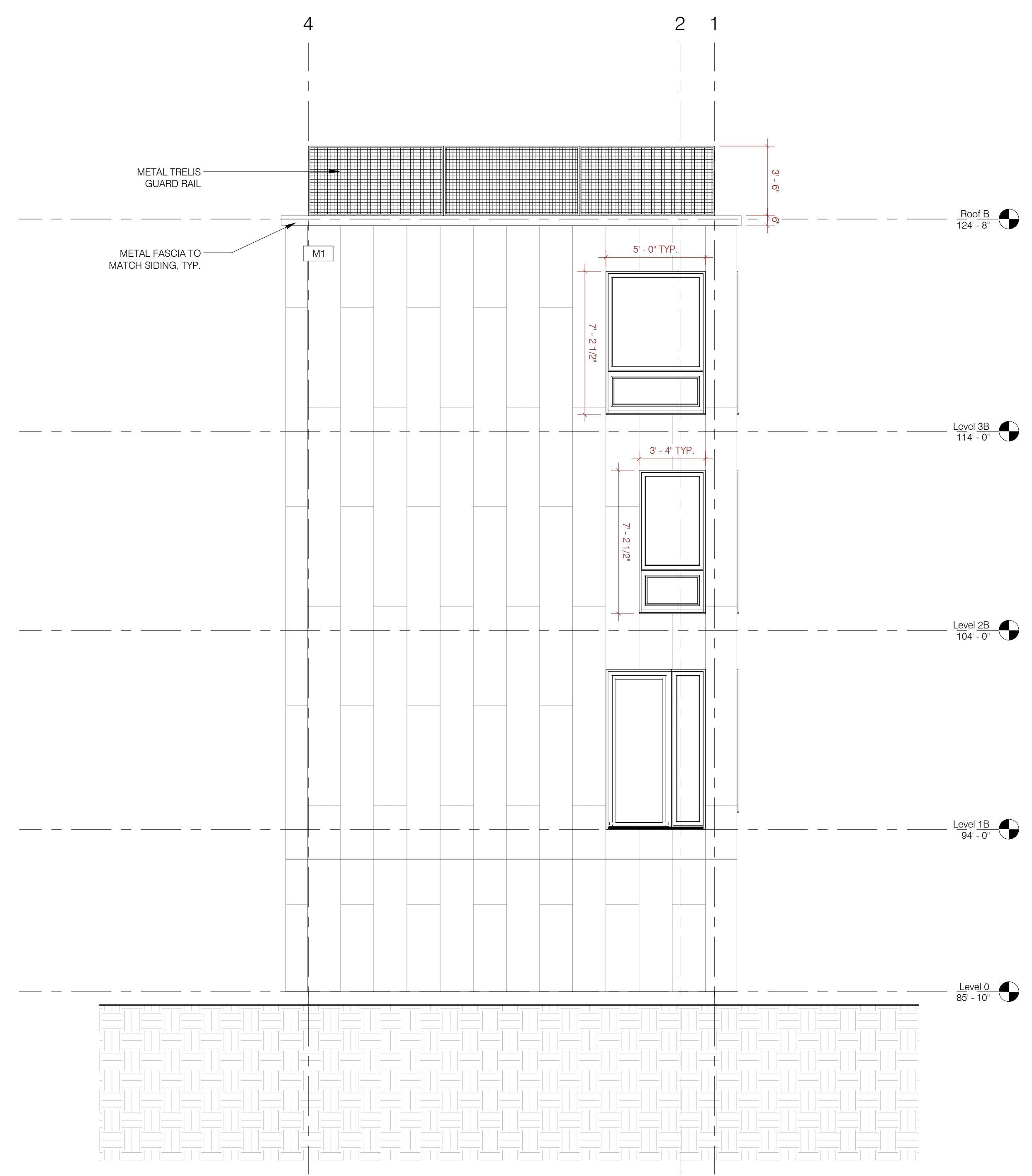
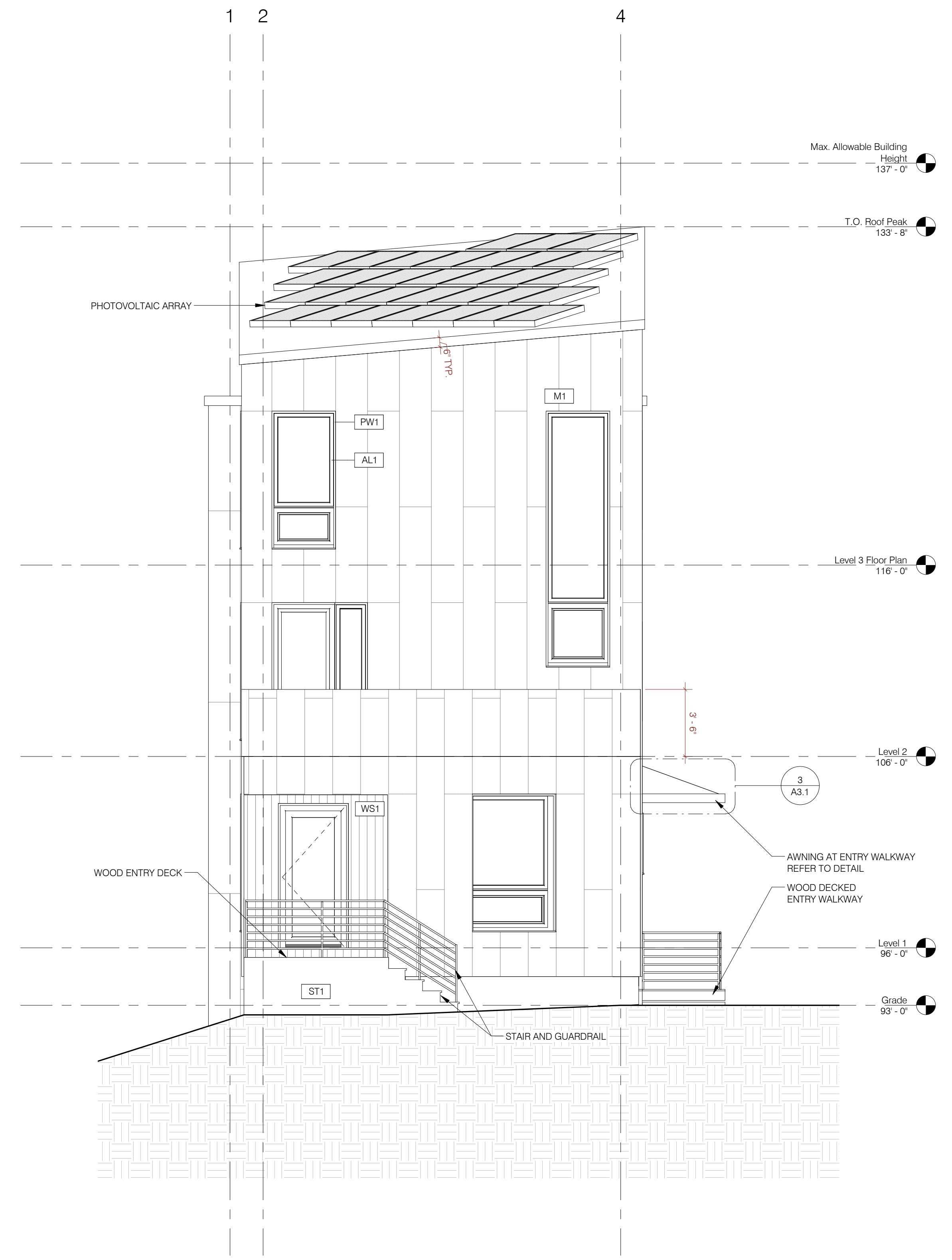


3 Section Detail - Awning
1 1/2" = 1'-0"

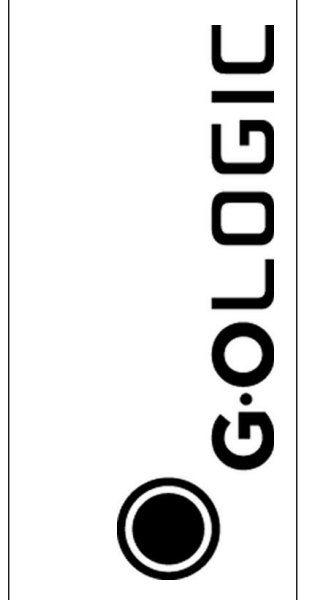
EXTERIOR FINISH SCHEDULE	
MATERIAL TYPE	MATERIAL DESCRIPTION
AL1	Aluminum Clad Window Frame
M1	Cold Formed A606 Steel Panel Siding - 20' x 10'
PW1	Painted Wood Trim
ST1	Acrylic Stucco Over Rigid Insulation
WS1	Vertical Shiplap Siding



2 North
1/4" = 1'-0"



1 South
1/4" = 1'-0"



97 Cumberland Ave.
Portland, ME 04101
Project Number

Exterior Elevations

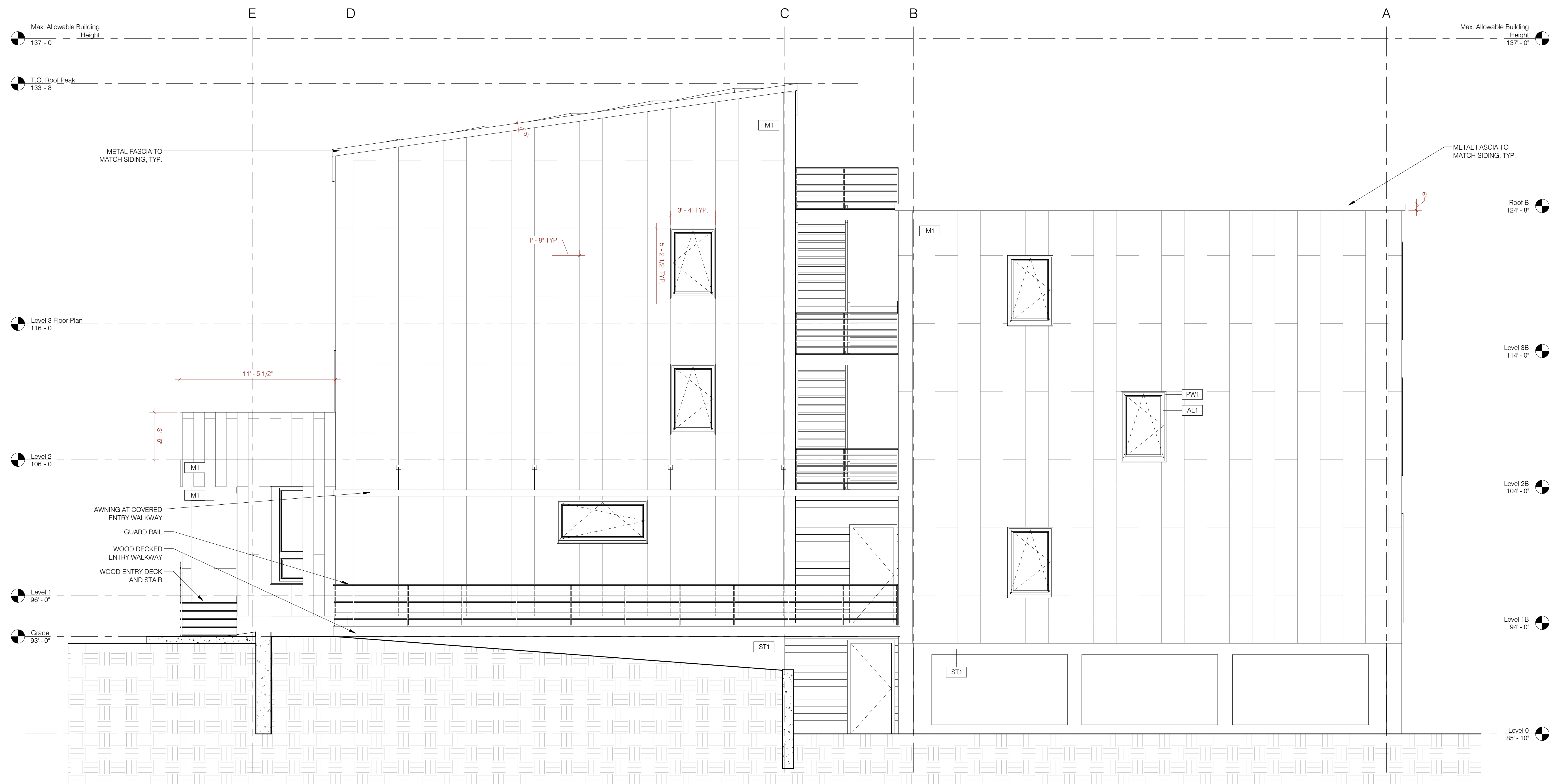
REVISIONS:
DATE & DESCRIPTION:

PAST ISSUES:
DATE & DESCRIPTION:
14-0121 For Consultant Review
14-0129 Pre-Application Review

CURRENT ISSUE:
14-0401 Preliminary Site Plan Review

A3.1

EXTERIOR FINISH SCHEDULE	
MATERIAL TYPE	MATERIAL DESCRIPTION
AL1	Aluminum Clad Window Frame
M1	Cold Formed A606 Steel Panel Siding - 20" x 10"
PW1	Painted Wood Trim
ST1	Acrylic Stucco Over Rigid Insulation
WS1	Vertical Shiplap Siding



EXTERIOR FINISH SCHEDULE	
MATERIAL TYPE	MATERIAL DESCRIPTION
AL1	Aluminum Clad Window Frame
M1	Cold Formed A606 Steel Panel Siding - 20" x 10"
PW1	Painted Wood Trim
ST1	Acrylic Stucco Over Rigid Insulation
WS1	Vertical Shiplap Siding

