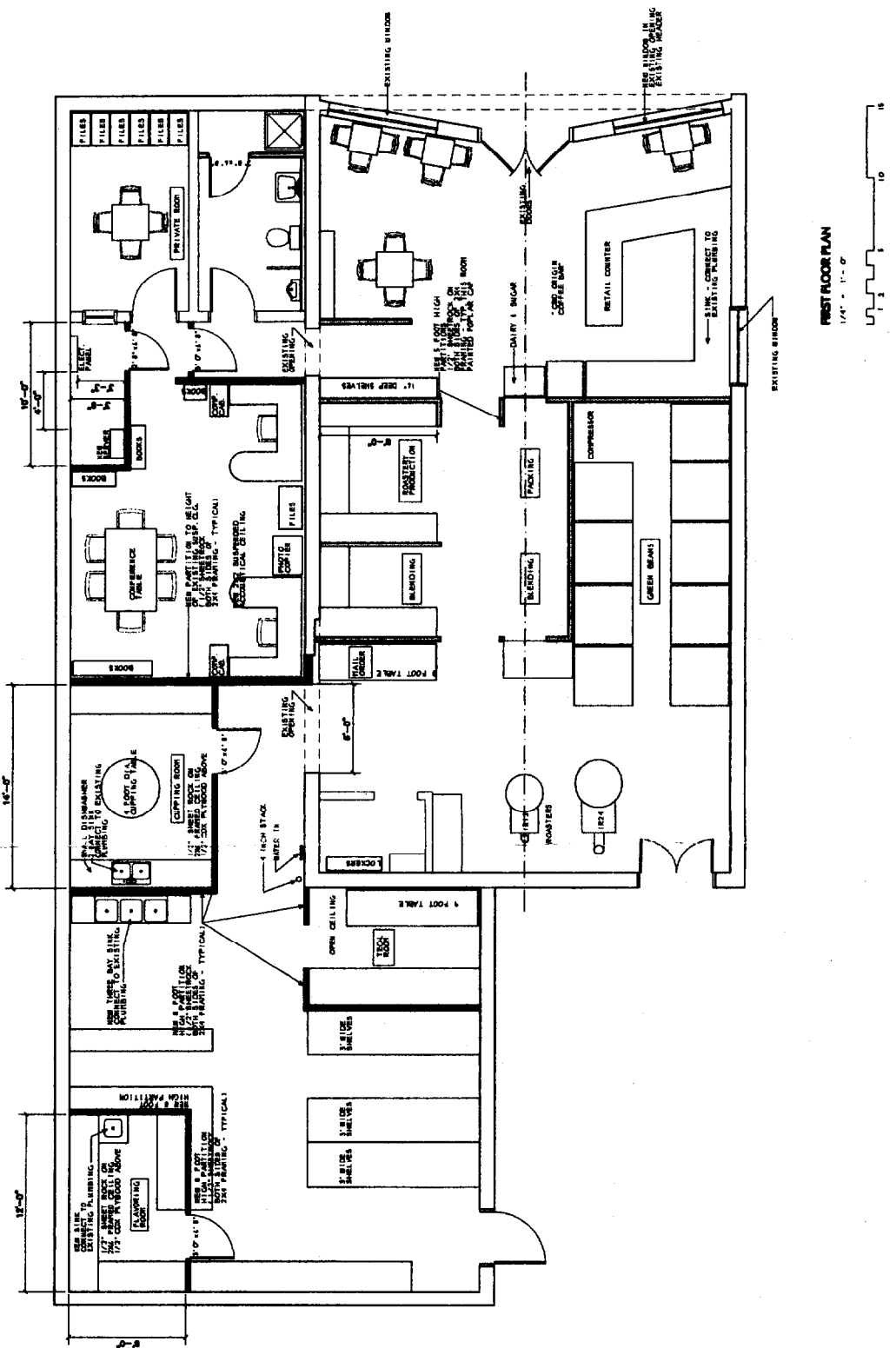


① TYPICAL NEW HIGH PARTITION SECTION WITH CEILING
1" = 1'-0"

② TYPICAL NEW LOW PARTITION SECTION
1" = 1'-0"

NOTES:
ALL PARTITIONS TO BE INSTALLED IN ACCORDANCE WITH LOCAL CODES AND ALL LOCAL, STATE AND FEDERAL REGULATIONS.
CALL FOR MORE DETAILS IN WORK.



FIRST FLOOR PLAN
1/4" = 1'-0"