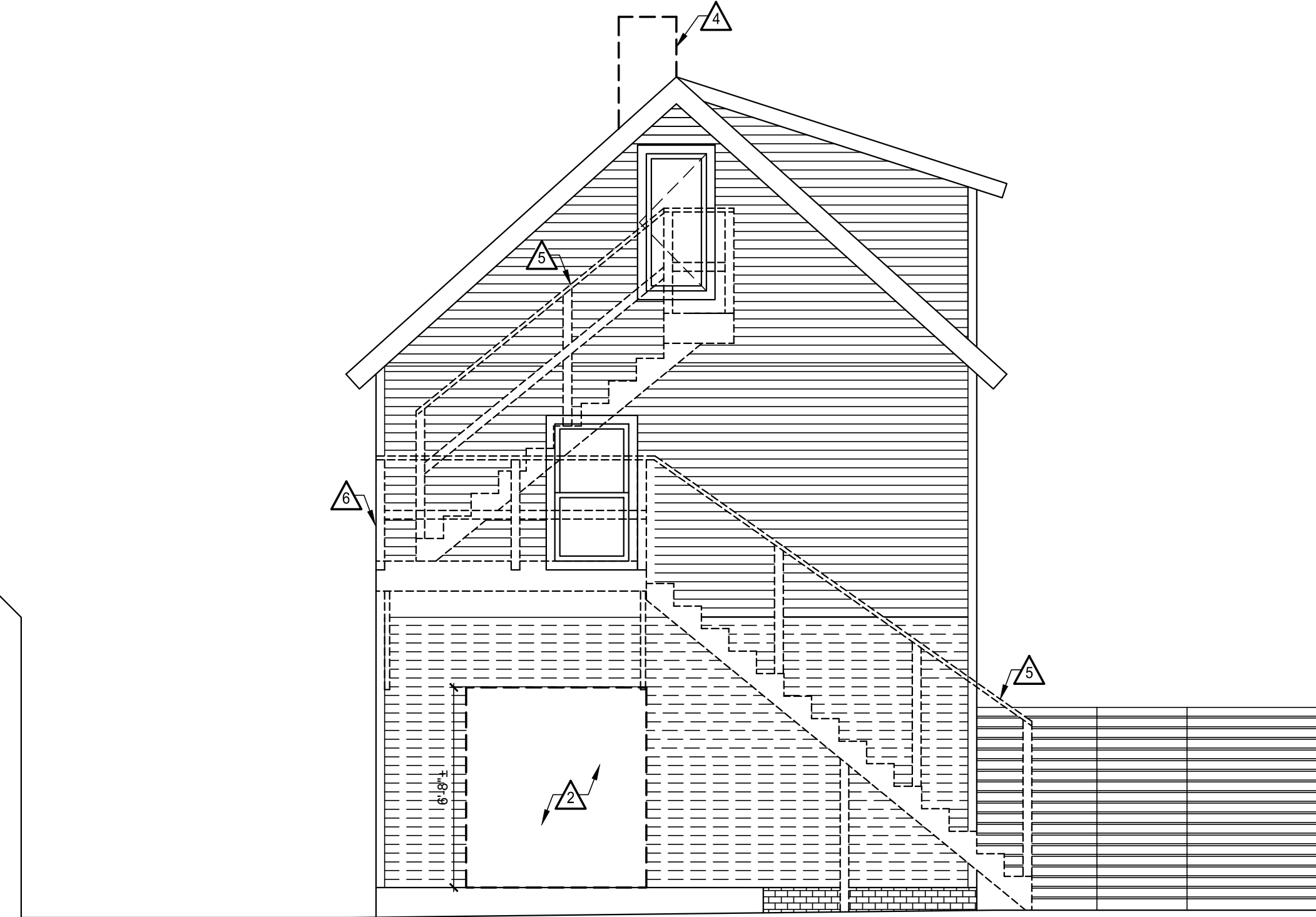
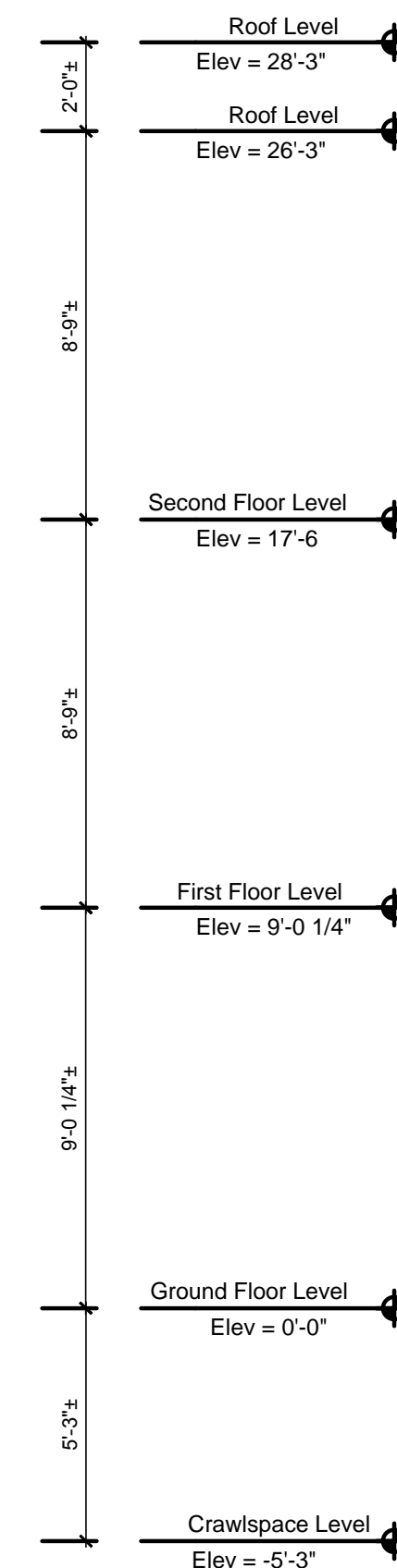


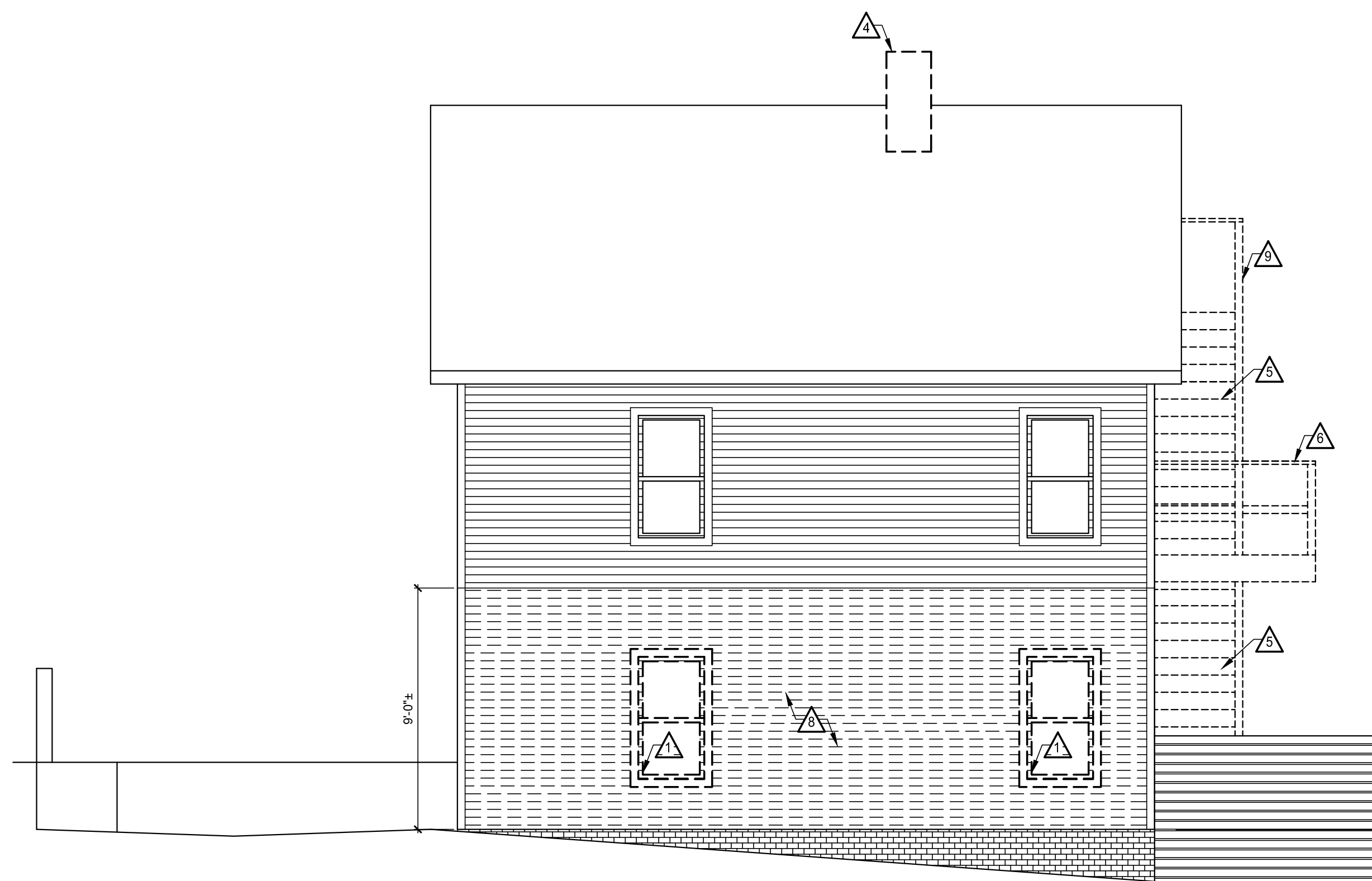
1 DEMO NORTH ELEVATION
AD201 SCALE: 1/4"=1'-0"



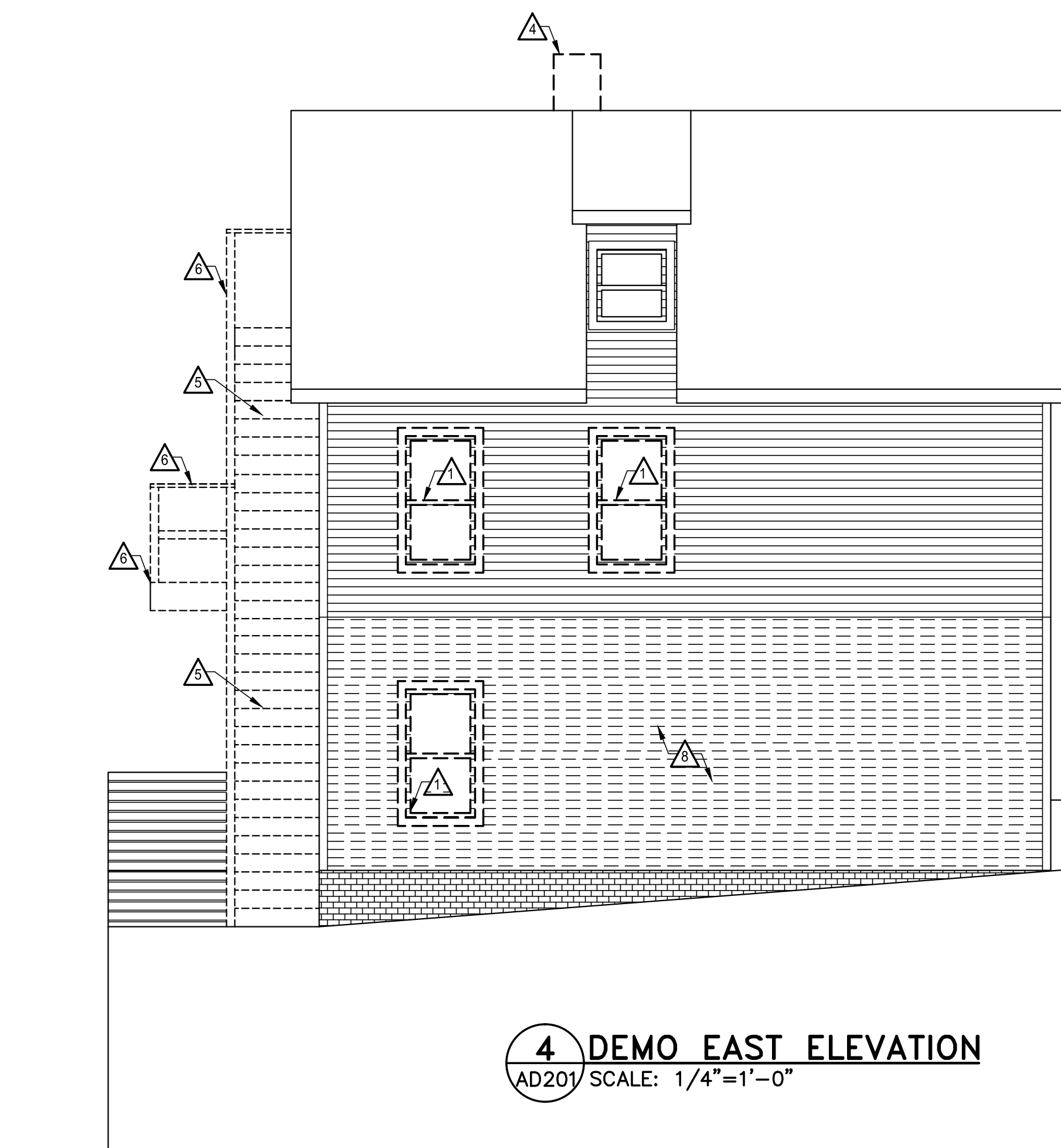
2 DEMO SOUTH ELEVATION
AD201 SCALE: 1/4"=1'-0"



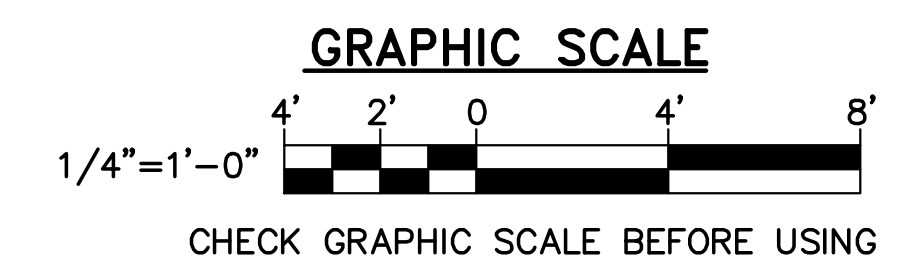
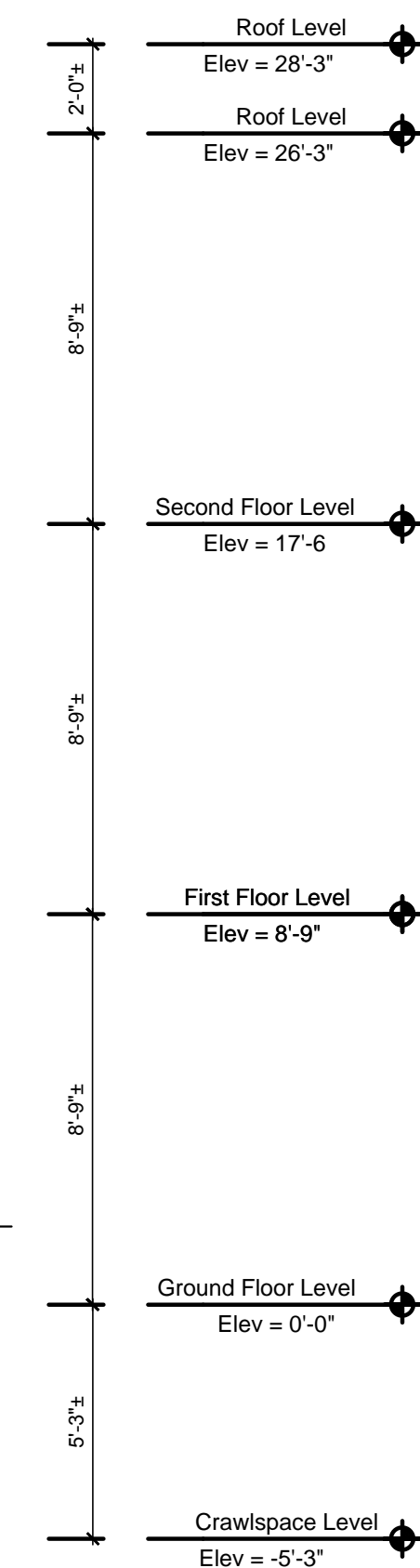
- DEMOLITION NOTES:**
- △ REMOVE WINDOW.
 - △ REMOVE PORTION OF WALL.
 - △ REMOVE DOOR AND FRAME.
 - △ REMOVE CHIMNEY.
 - △ REMOVE WOOD STAIR.
 - △ REMOVE WOOD DECK.
 - △ REMOVE VINYL SIDING.



3 DEMO WEST ELEVATION
AD201 SCALE: 1/4"=1'-0"



4 DEMO EAST ELEVATION
AD201 SCALE: 1/4"=1'-0"



DESIGNED BY: N.J.D
DRAWN BY: N.J.D
CHECKED BY: N.J.D
PROJECT: XXXXXX.XX

UNLEVEL HOUSE
12 ROMASCO LN., PORTLAND, ME

DEMOLITION
EXTERIOR
ELEVATIONS

SCALE: AS NOTED
DATE: 4-12-13
DWG.: AD201
SHEET: OF -