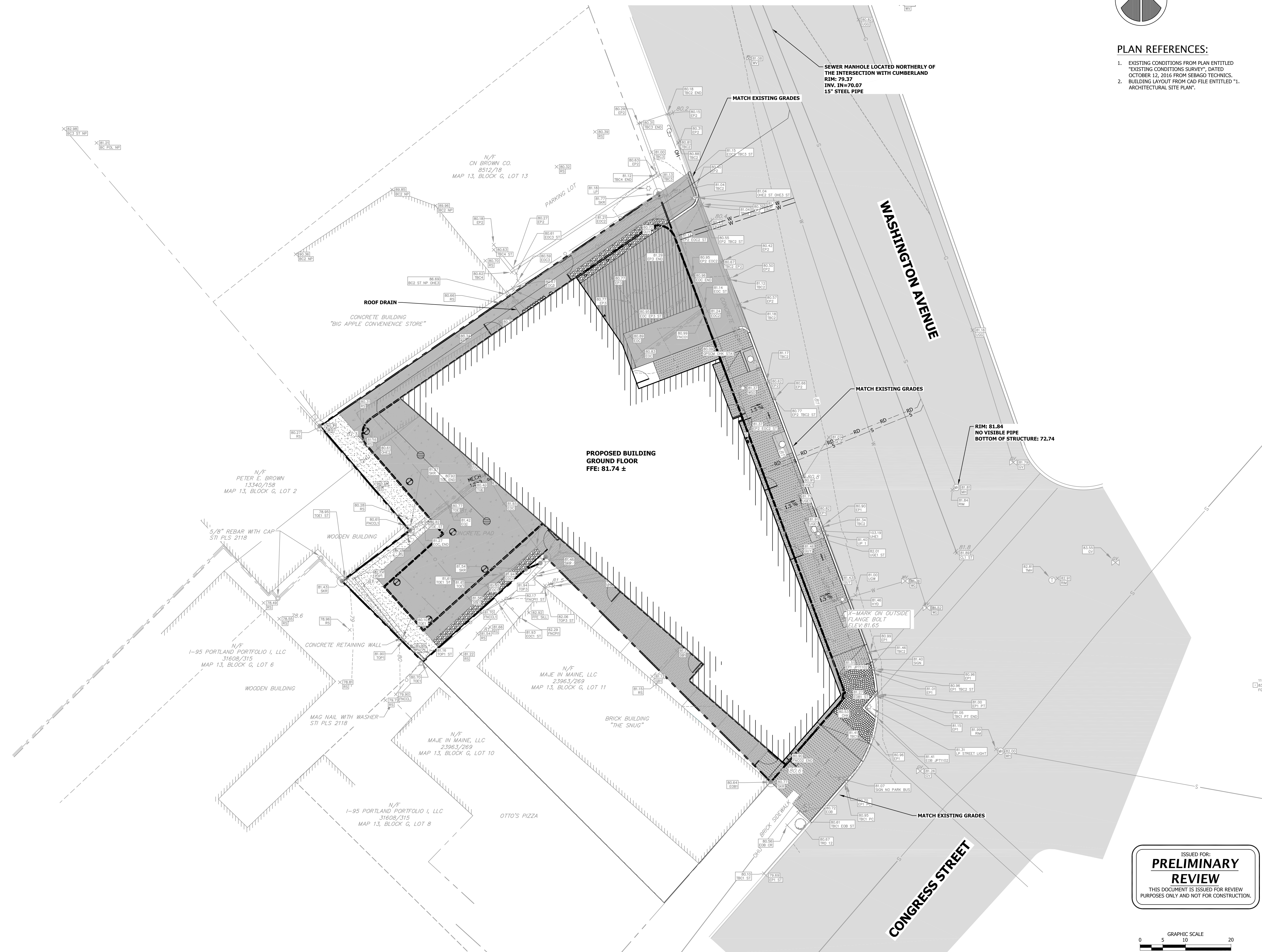
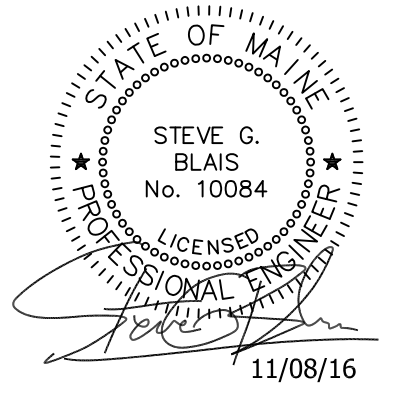


PLAN REFERENCES:

- EXISTING CONDITIONS FROM PLAN ENTITLED "EXISTING CONDITIONS SURVEY", DATED OCTOBER 12, 2016 FROM SEBAGO TECHNICS.
- BUILDING LAYOUT FROM CAD FILE ENTITLED "1. ARCHITECTURAL SITE PLAN".



GRADING & UTILITY PLAN

221 CONGRESS STREET

PORTLAND, MAINE 04101

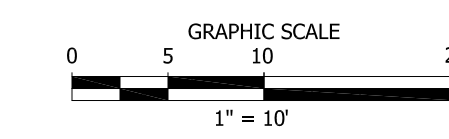
DRAWINGS PREPARED FOR:
HAY RUNNER, LLC
265 MAIN STREET, SUITE 201
BIDDEFORD, MAINE 04005

DRAWING:

PROJECT:

ISSUED DATE: 11/08/16
DESIGNED BY: JDY
DRAWN BY: DRH
CHECKED BY: SGB
PROJECT NUMBER: 16123

ISSUED FOR:
PRELIMINARY REVIEW
THIS DOCUMENT IS ISSUED FOR REVIEW PURPOSES ONLY AND NOT FOR CONSTRUCTION.



C-104