

**TABLE OF DIMENSIONS  
PVC, TRUSS, CMP, & POLYETHYLENE PIPE**

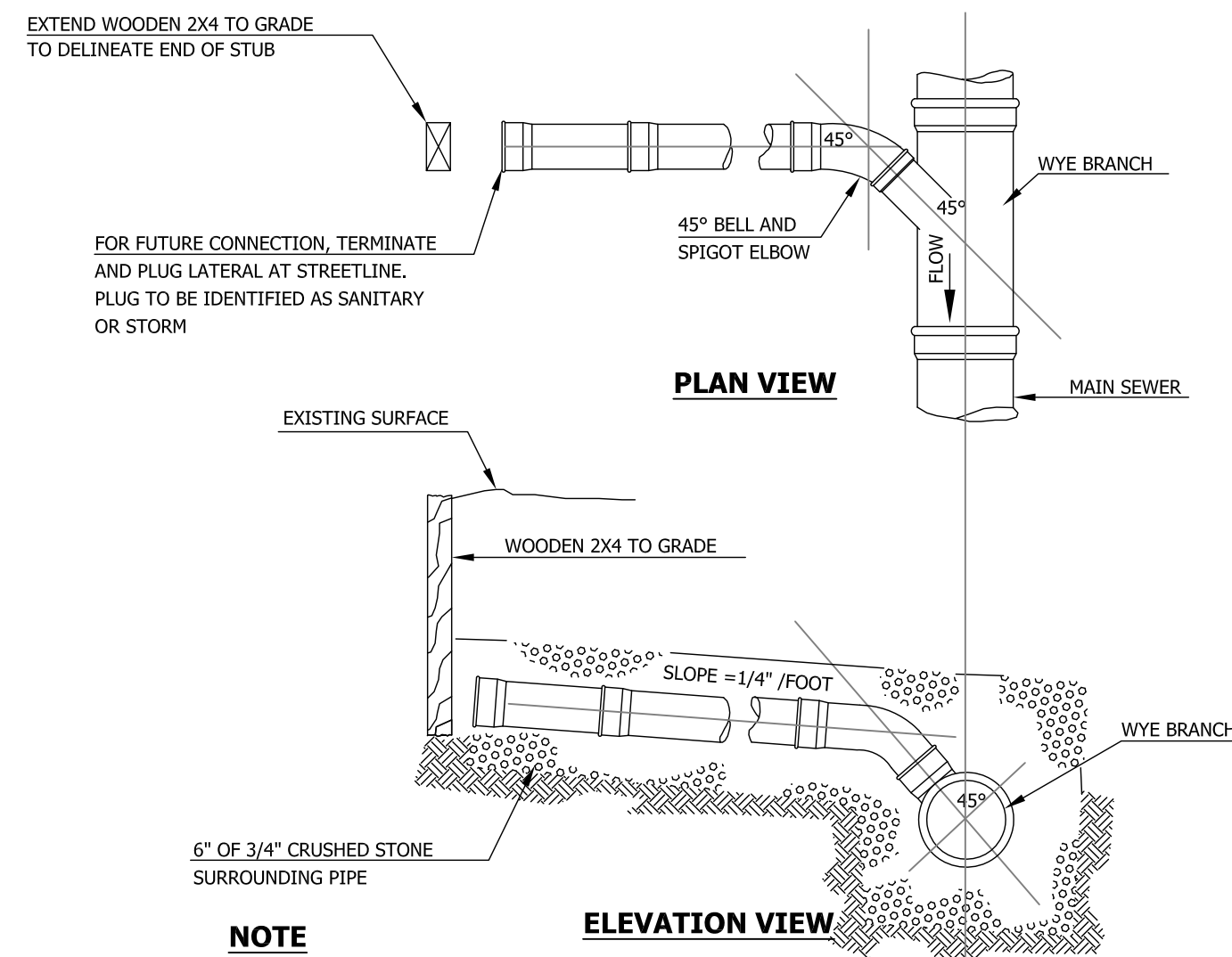
| D   | A          | B          | C         | VOL. BASE /100' |              |
|-----|------------|------------|-----------|-----------------|--------------|
|     |            |            |           | UNSHEETED       | O. D. SOCKET |
| 8"  | 3'-0"      | 1'-1 1/2"  | 0'-1/2"   | 7.358           | 10 3/8"      |
| 10" | 3'-0"      | 1'-0 3/8"  | 0'-0 5/8" | 7.658           | 12 1/2"      |
| 12" | 3'-0"      | 0'-11 3/8" | 0'-0 5/8" | 7.932           | 14 1/2"      |
| 14" | 3'-0"      | 0'-10 3/8" | 0'-0 5/8" | 8.178           | 16 3/4"      |
| 16" | 3'-0"      | 0'-9 1/4"  | 0'-0 3/4" | 8.447           | 19"          |
| 18" | 3'-0"      | 0'-8 1/4"  | 0'-0 3/4" | 8.663           | 21 1/8"      |
| 20" | 3'-0"      | 0'-7 3/8"  | 0'-0 3/4" | 8.815           | 23 3/8"      |
| 24" | 3'-1 3/4"  | 0'-6"      | 0'-0 7/8" | 9.633           | 27 3/4"      |
| 27" | 3'-5 1/4"  | 0'-6"      | 0'-1 1/8" | 10.959          | 31 1/8"      |
| 30" | 3'-8 1/4"  | 0'-6"      | 0'-1 1/8" | 12.156          | 34 1/2"      |
| 33" | 3'-11 3/4" | 0'-6"      | 0'-1 3/8" | 13.513          | 38 1/8"      |
| 36" | 4'-2 3/4"  | 0'-6"      | 0'-1 3/8" | 14.910          |              |

A = WIDTH OF UNSHEETED TRENCH

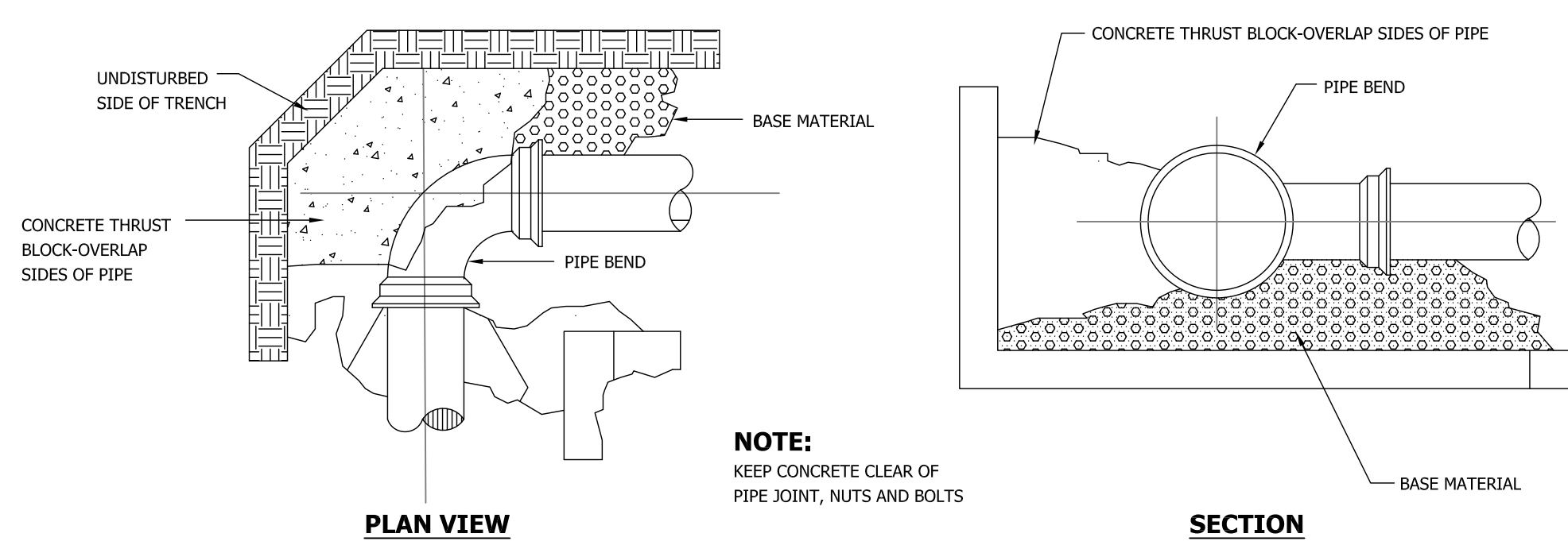
**TABLE OF DIMENSIONS  
REINFORCED CONCRETE PIPE**

| D   | A         | B         | C         | VOL. BASE /100' |            |
|-----|-----------|-----------|-----------|-----------------|------------|
|     |           |           |           | UNSHEETED       | O. D. BELL |
| 12" | 3'-0"     | 0'-10"    | 0'-2"     | 8.319           | 20 1/4"    |
| 15" | 3'-0"     | 0'-8 1/4" | 0'-2 1/4" | 8.626           | 24 1/8"    |
| 18" | 3'-0"     | 0'-6 1/2" | 0'-2 1/2" | 8.925           | 28"        |
| 21" | 3'-0 1/2" | 0'-6"     | 0'-2 3/4" | 9.266           | 31 7/8"    |
| 24" | 3'-6"     | 0'-6"     | 0'-3"     | 11.233          | 35 3/4"    |
| 27" | 3'-9 1/2" | 0'-6"     | 0'-3 1/4" | 12.655          |            |
| 30" | 4'-1"     | 0'-6"     | 0'-3 1/2" | 14.120          |            |
| 33" | 4'-4 1/2" | 0'-6"     | 0'-3 3/4" | 15.722          |            |
| 36" | 4'-8"     | 0'-6"     | 0'-4"     | 17.338          |            |
| 42" | 5'-3"     | 0'-6"     | 0'-4 1/2" | 20.726          |            |
| 48" | 5'-10"    | 0'-6"     | 0'-5"     | 24.463          |            |
| 54" | 6'-5"     | 0'-6"     | 0'-5 1/2" | 28.404          |            |
| 60" | 7'-0"     | 0'-6"     | 0'-6"     | 32.607          |            |
| 66" | 7'-7"     | 0'-6"     | 0'-6 1/2" | 37.074          |            |
| 72" | 8'-2"     | 0'-6"     | 0'-7"     | 41.886          |            |
| 78" | 8'-9"     | 0'-6"     | 0'-7 1/2" | 46.881          |            |
| 84" | 9'-4"     | 0'-6"     | 0'-8"     | 52.149          |            |
| 90" | 9'-11"    | 0'-6"     | 0'-8 1/2" | 57.769          |            |
| 96" | 10'-6"    | 0'-6"     | 0'-9"     | 63.552          |            |

27 in. THROUGH 96 in. INCLUSIVE - TONGUE & GROOVE JOINTS

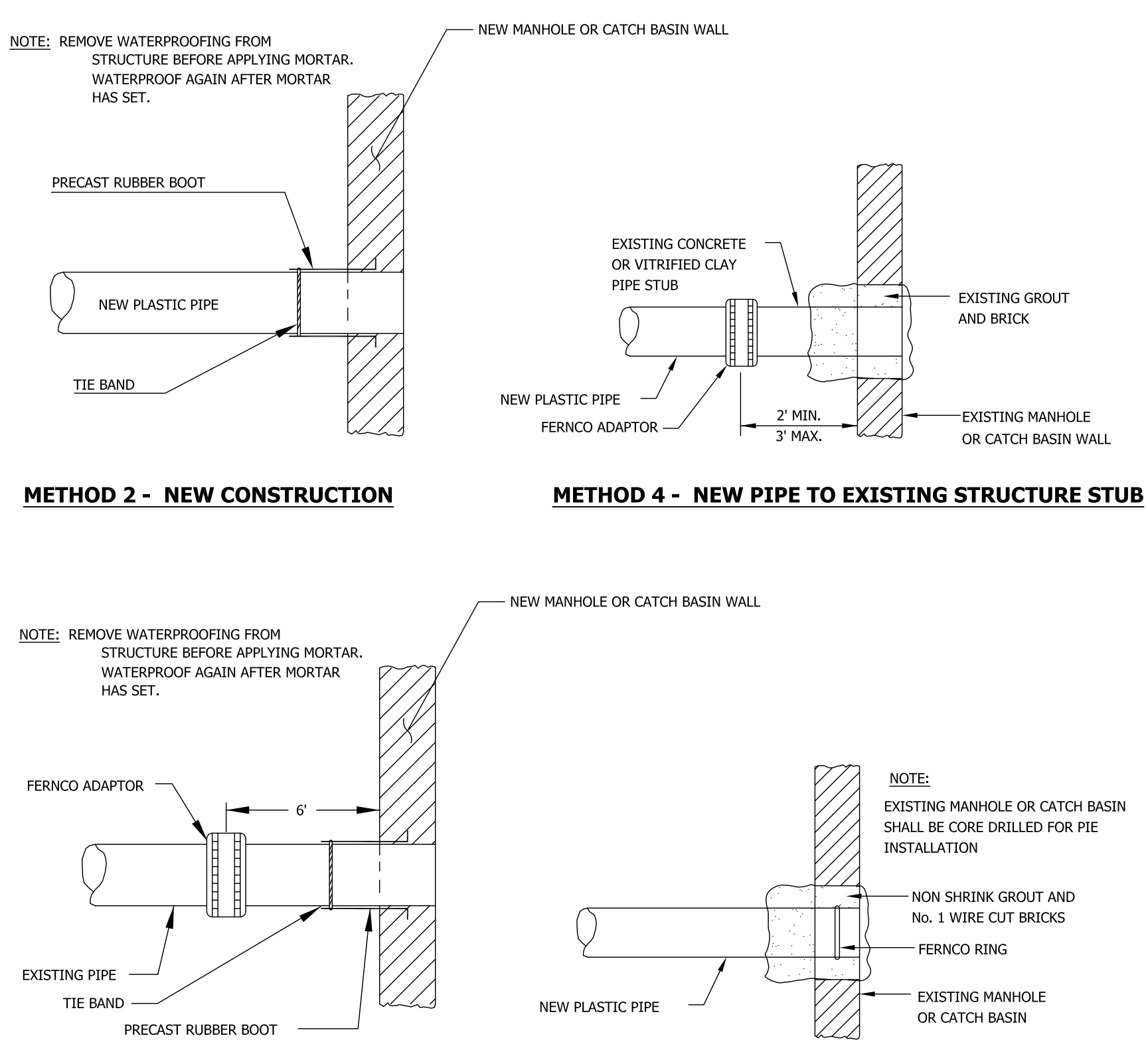


**1 TYPICAL LATERAL WYE CONNECTION**  
NOT TO SCALE



**2 TYPICAL PIPE INSTALLATION**  
NOT TO SCALE

**3 FORCE MAIN THRUST BLOCK PLACEMENT ON VERTICAL & HORIZONTAL BENDS**  
NOT TO SCALE



**4 PIPE CONNECTION DETAILS**  
NOT TO SCALE

**NOTE:**  
ANY ALTERNATE TRENCHING OR PAYMENT METHODS SHALL BE APPROVED IN ADVANCE BY THE CITY

PAYMENT WIDTH FOR TRENCH PAVEMENT REPLACEMENT

COMMON BACKFILL FROM TRENCH EXCAVATION (INCIDENTAL) OR GRANULAR BORROW (IF ORDERED)  
PAY ITEM 203.25

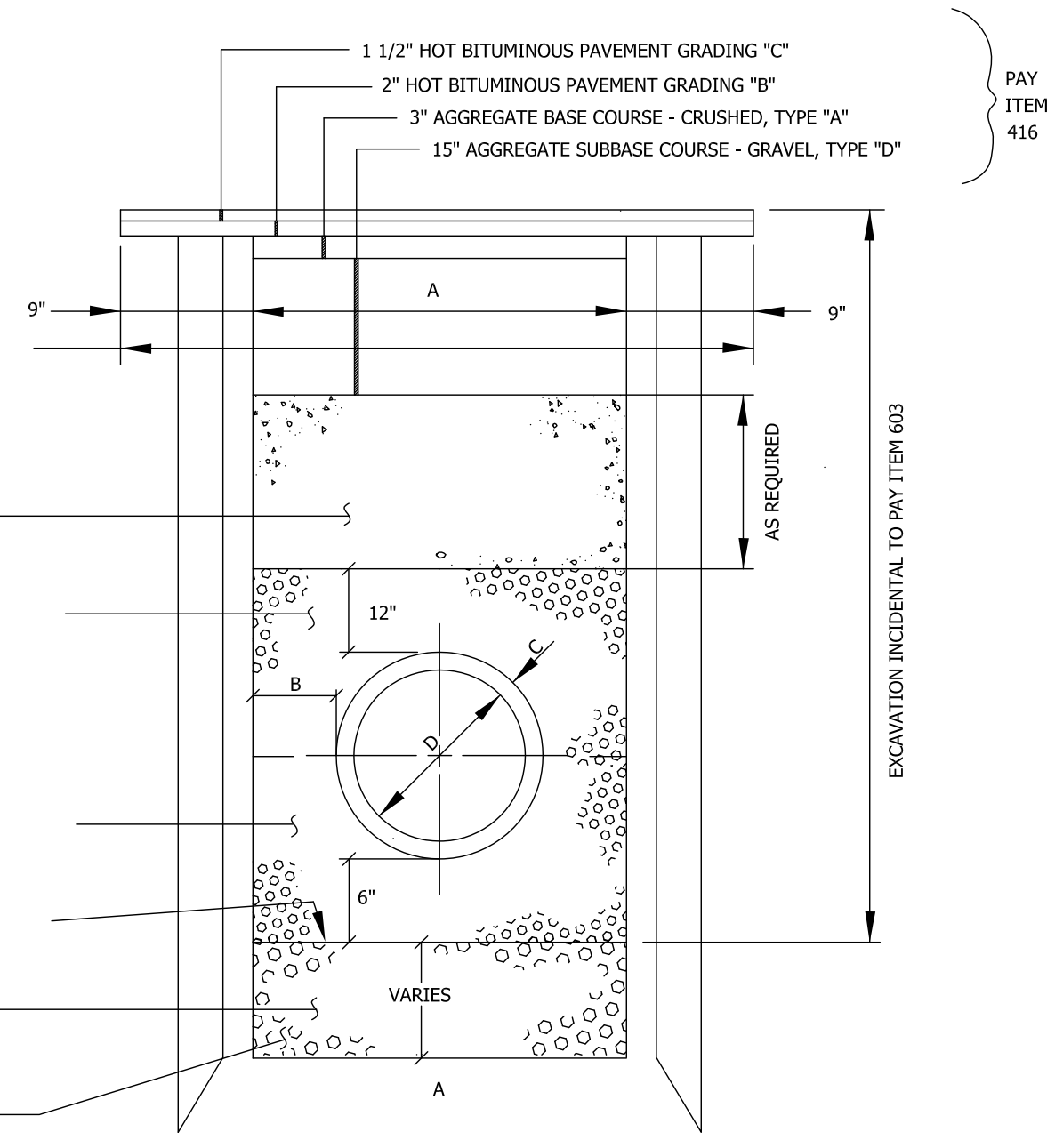
COMPACTED SPECIAL BACKFILL (INCIDENTAL TO PAY ITEM 603)  
FLEXIBLE PIPE: 3/4\"/>

RIGID PIPE: SAND, 703.06 (b), 12\"/>

3/4\"/>

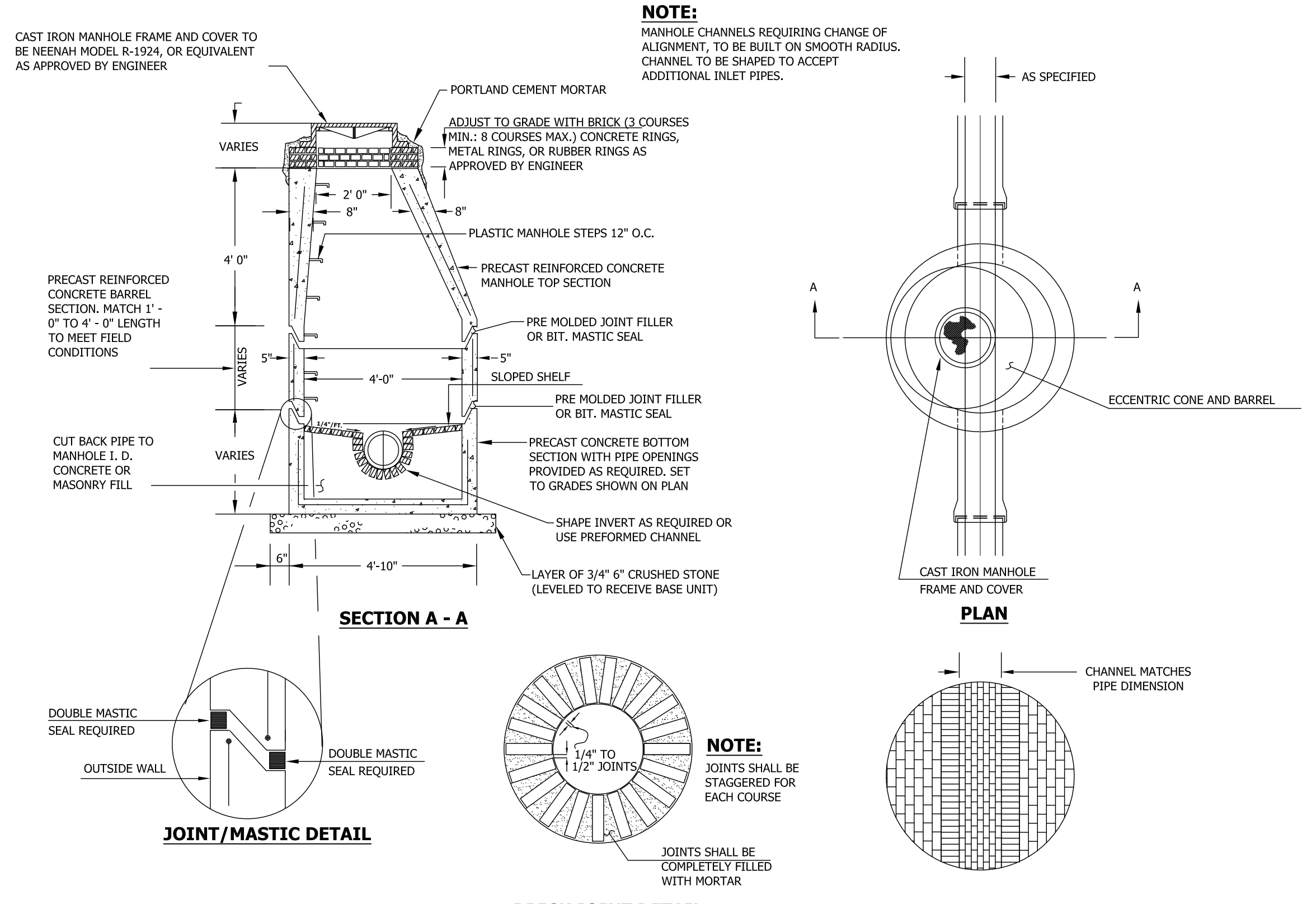
ESTABLISHED TRENCH PROFILE EXCAVATION BELOW ESTABLISHED TRENCH PROFILE (IF ORDERED)  
PAY ITEM 206.061

2\"/>



**TYPICAL PIPE INSTALLATION DETAIL**  
NOT TO SCALE

**2 TYPICAL PIPE INSTALLATION**  
NOT TO SCALE



**5 PRECAST CONCRETE MANHOLE TYPE "A"**  
NOT TO SCALE

**NOTE:**  
MANHOLE CHANNELS REQUIRING CHANGE OF ALIGNMENT, TO BE BUILT ON SMOOTH RADIUS. CHANNEL TO BE SHAPED TO ACCEPT ADDITIONAL INLET PIPES.

**NOTE:**  
JOINTS SHALL BE STAGGERED FOR EACH COURSE  
JOINTS SHALL BE COMPLETELY FILLED WITH MORTAR

ISSUED FOR:  
**PRELIMINARY REVIEW**  
THIS DOCUMENT IS ISSUED FOR REVIEW PURPOSES ONLY AND NOT FOR CONSTRUCTION.

**SITE DETAILS III**  
**221 CONGRESS STREET**  
PORTLAND, MAINE 04101

DRAWING:  
PROJECT:  
ISSUED DATE: 11/08/16  
DESIGNED BY: JDY  
DRAWN BY: DRH  
CHECKED BY: SGB  
PROJECT NUMBER: 16123

**C-303**