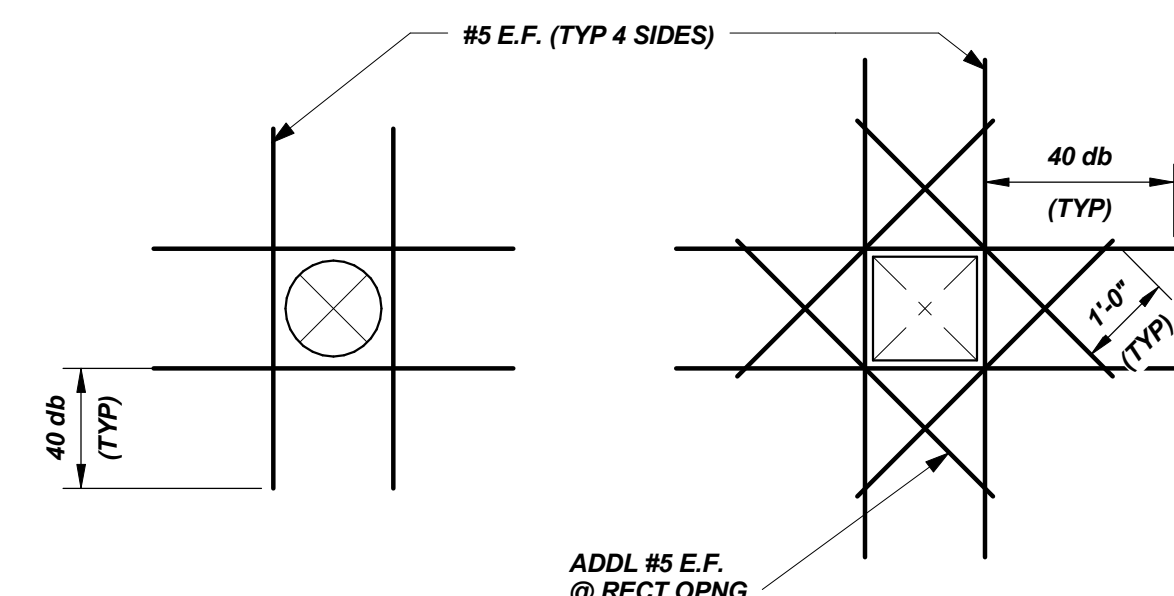
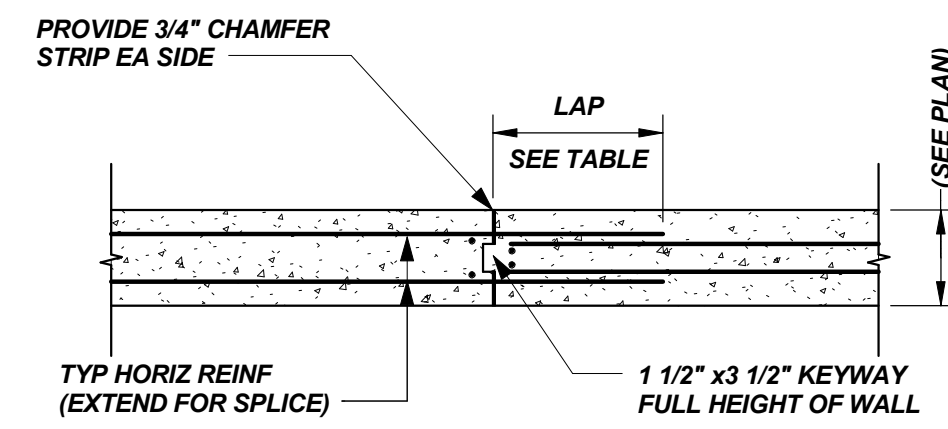


NOTE: ALSO PROVIDE #4x24" (TOP) IN SLAB @ INSIDE RE-ENTRANT CORNERS (SEE PLAN)

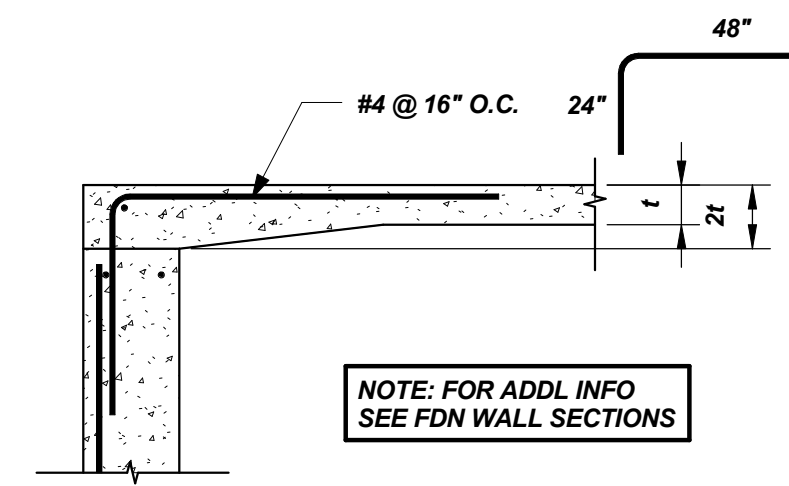
**TYP SLAB CORNER DETAIL @ DOOR**  
N.T.S.



**TYP OPENING IN WALL OR SLAB DETAIL**  
N.T.S.

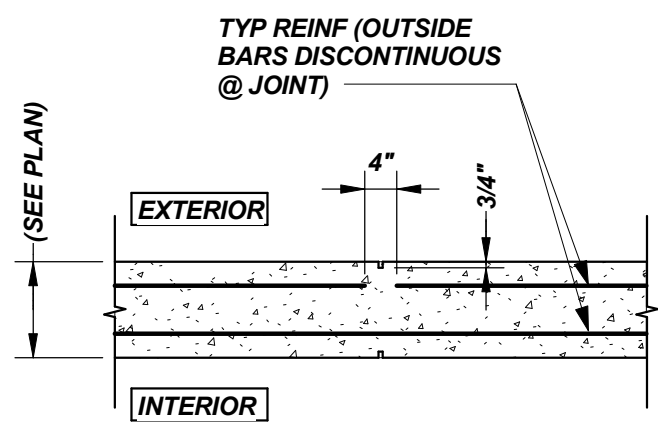


**TYP CONSTRUCTION JOINT IN WALL**  
N.T.S.

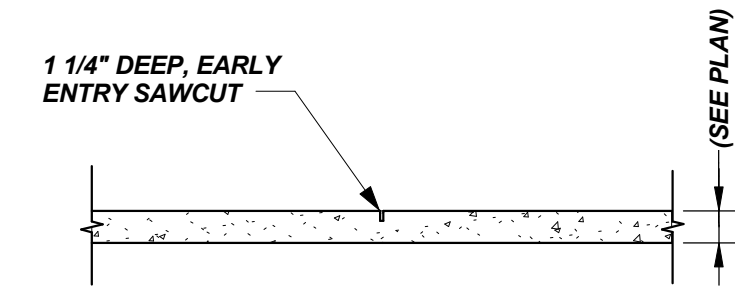


**TYPICAL SLAB DETAIL AT DOOR**  
N.T.S. t = SLAB THICKNESS

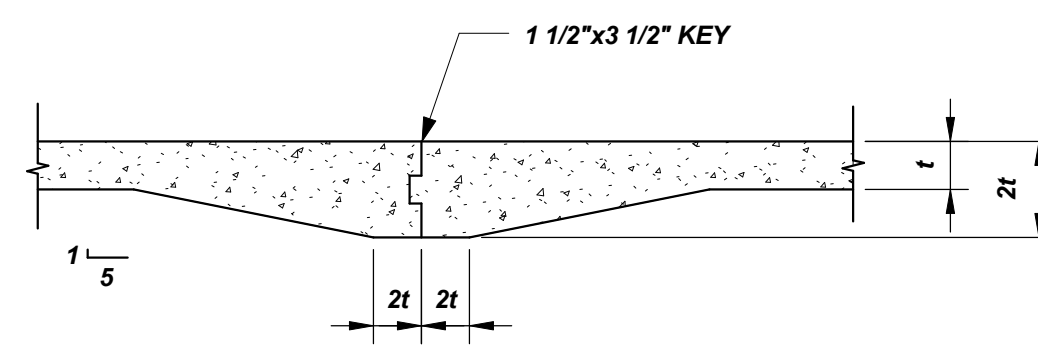
BAR SIZE	LAP LENGTH	
	3,000/3,500 PSI	5,000 PSI
#3	30"	24"
#4	36"	32"
#5	48"	42"
#6	56"	48"
#7	81"	72"
#8	93"	80"



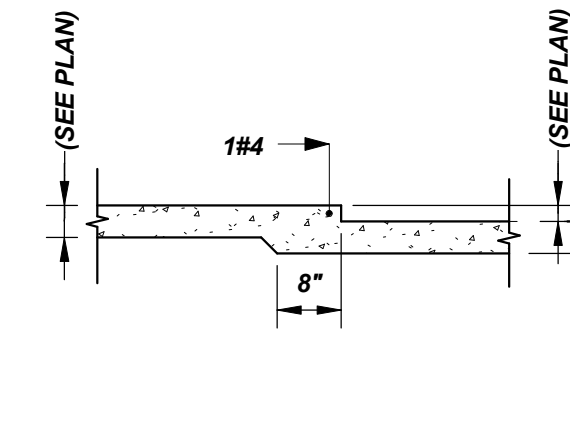
**TYP CONTRACTION JOINT IN WALL**  
N.T.S.



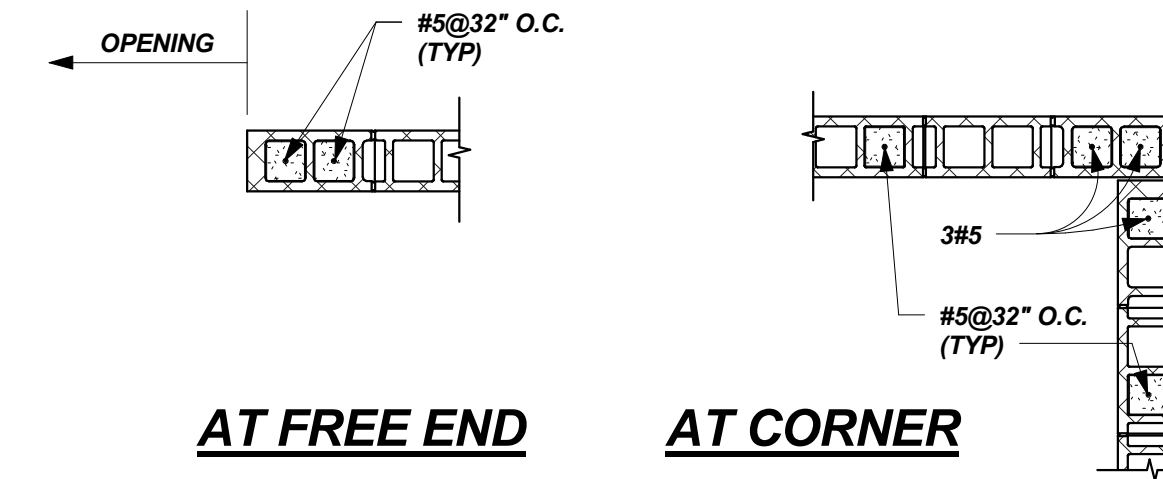
**4\"/>**



**TYP SLAB ON GRADE CONST JOINT DETAIL**  
N.T.S. t = SLAB THICKNESS



**TYP SLAB ON GRADE DEPRESSION DETAIL**  
N.T.S.

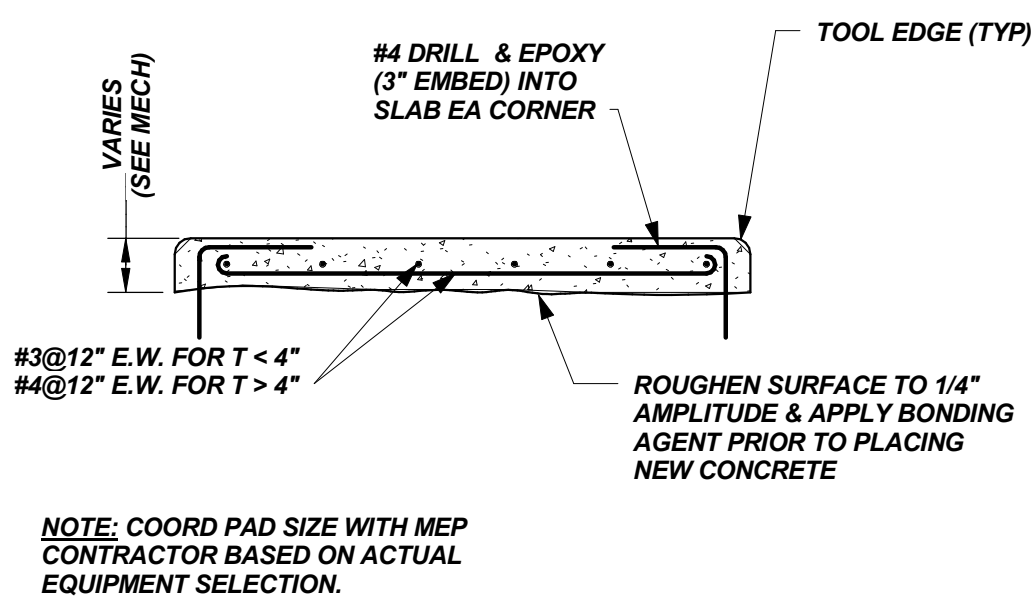


**AT FREE END AT CORNER**

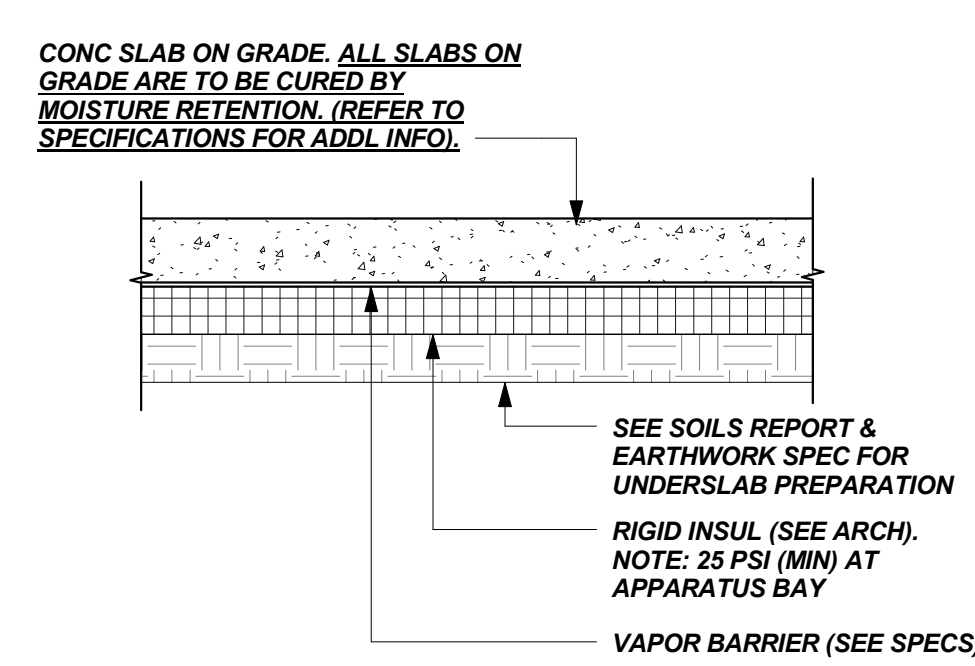
**TYP PLAN DETAILS AT CMU WALLS**  
N.T.S.

**NOTES:**

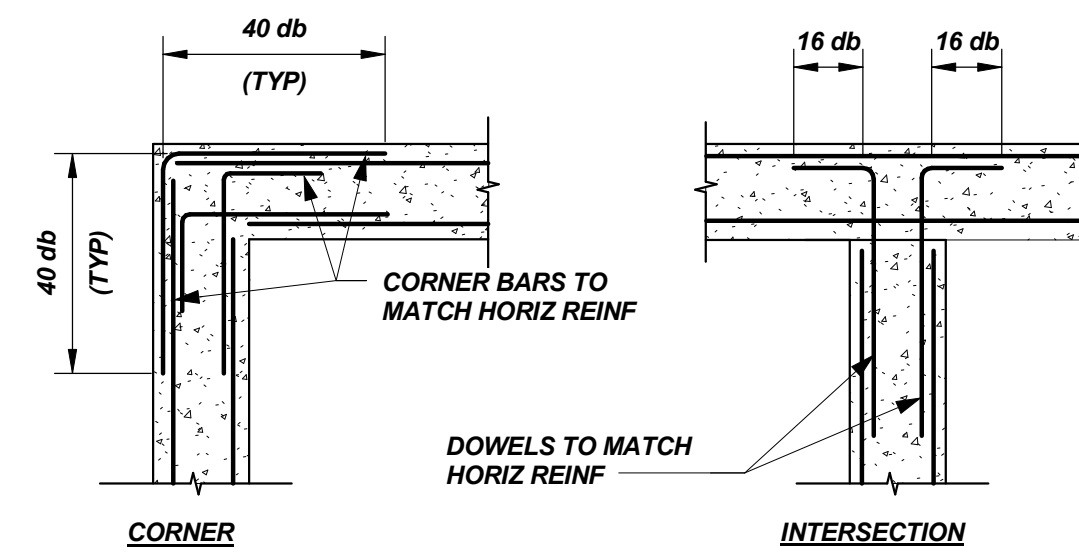
1. PROVIDE LADUR TIE HORIZ REINF @16" O.C. U.N.O.
2. PROVIDE MATCHING CORNER & INTERSECTION DOWELS AT ALL BOND BEAMS.
3. ALL REINFORCED CELLS ARE TO BE FULLY GROUTED.
4. LAP BARS AT SPLICES MIN 40 BAR DIAMETERS.
5. PROVIDE #5 MIN. ABOVE & BELOW ALL OPENINGS. EXTEND 24" MIN BEYOND EDGE OF OPENING EA SIDE.
6. ALL CMU WALL REINF SHALL BE REVIEWED BY THE STRUCTURAL ENGINEER OR THEIR DESIGNATED REPRESENTATIVE PRIOR TO GROUTING.



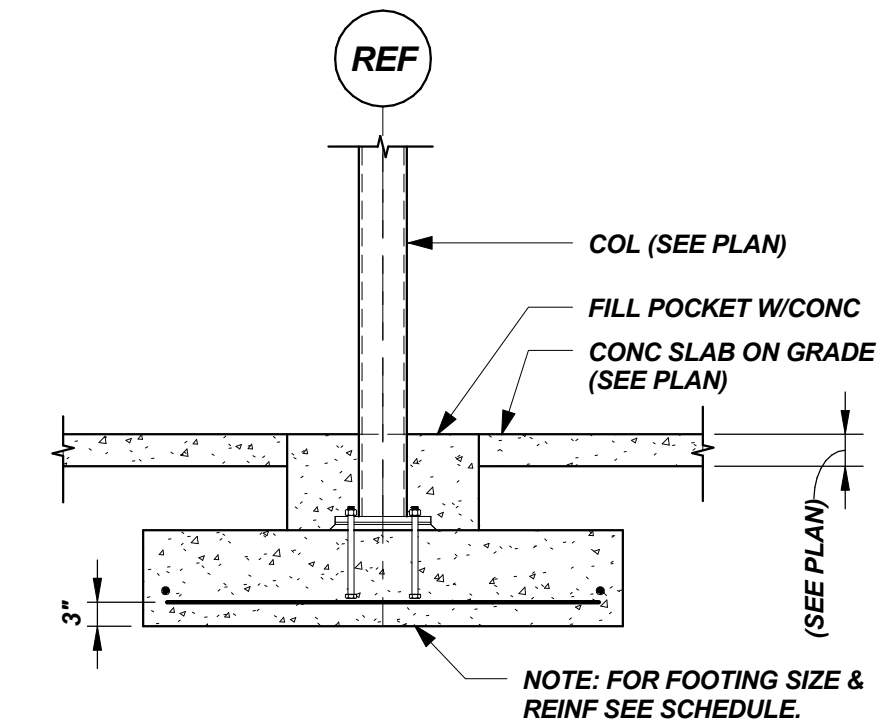
**TYP EQUIPMENT HOUSEKEEPING PAD DETAIL**  
N.T.S.



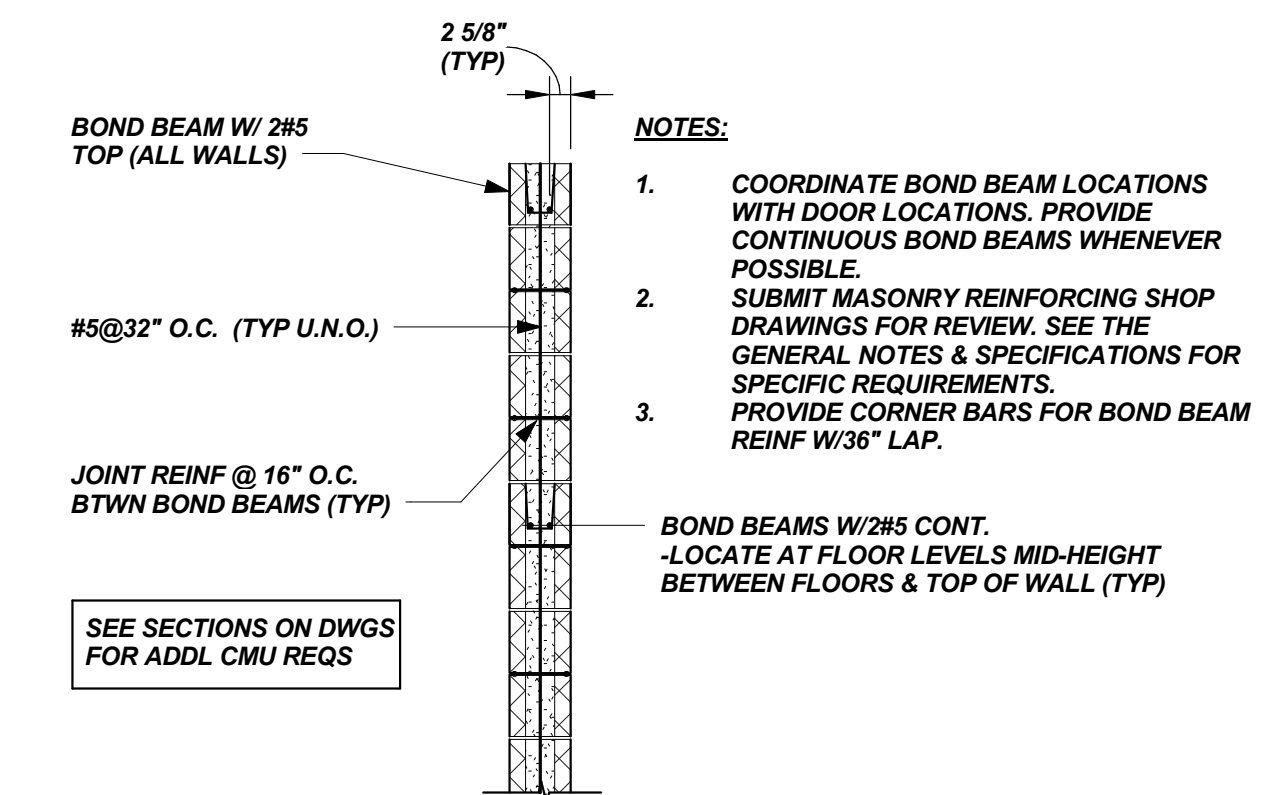
**TYP SLAB DETAIL**  
N.T.S.



**TYP WALL REINF DETAILS**

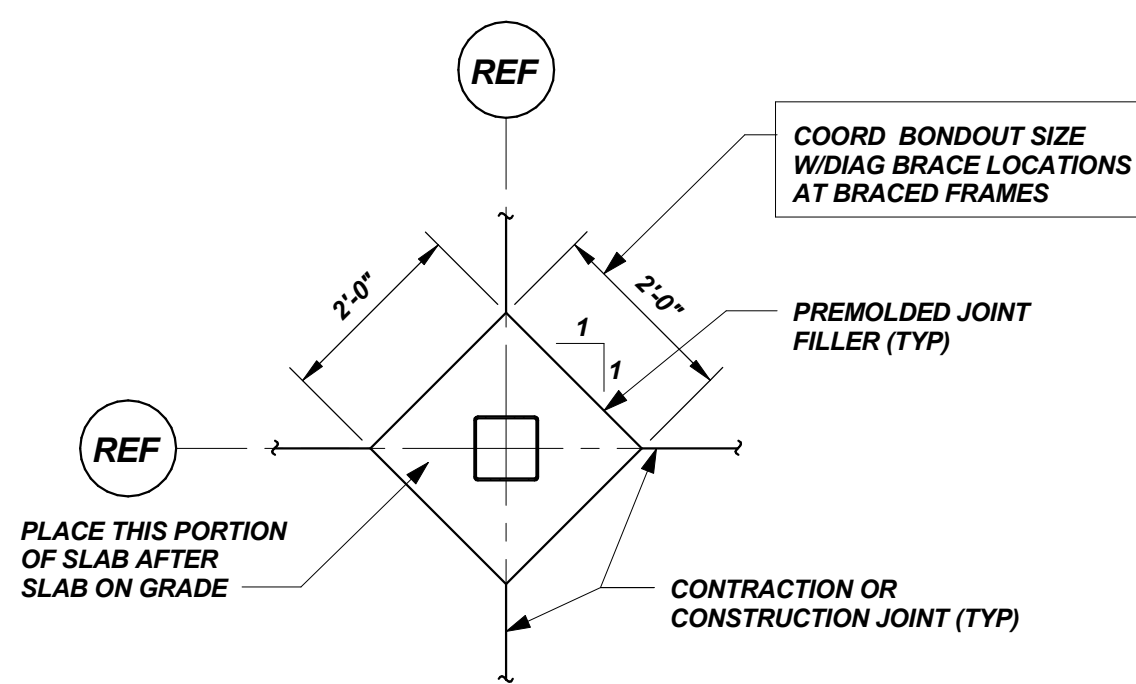


**TYP INTERIOR FOOTING DETAIL U.N.O.**  
N.T.S.

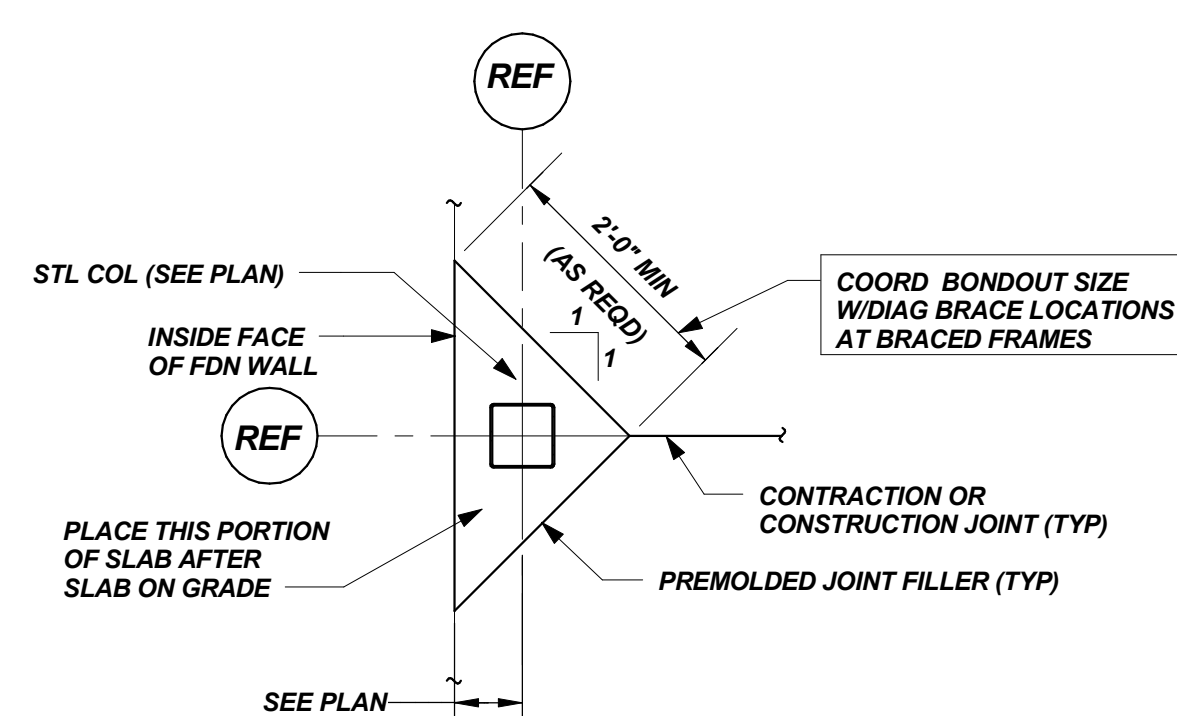


**TYP CMU WALL SECTION (U.N.O.)**  
N.T.S.

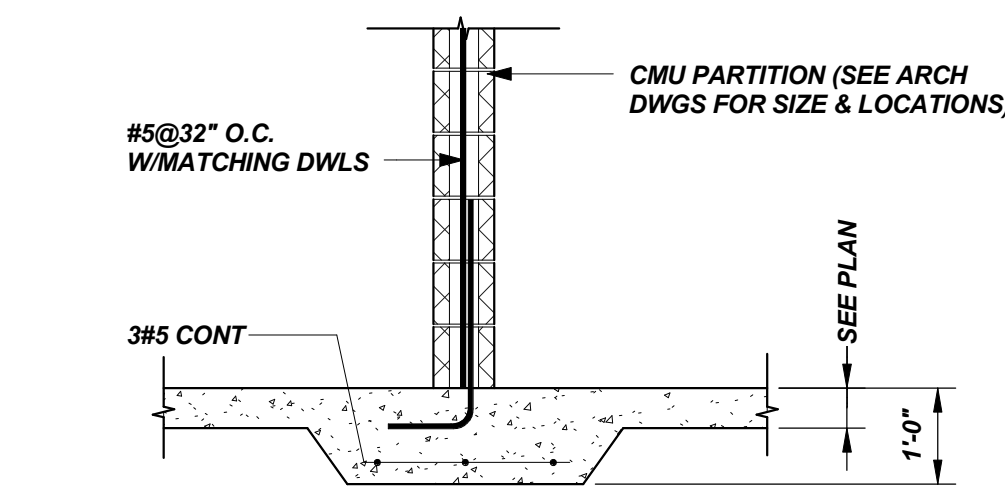
CMU LINTEL SCHEDULE (U.N.O.)			
CLEAR SPAN	WIDTH	DEPTH	REINF
< 6'-0"	8"	8"	2#5 CONT
6'-0" - 12'-0"	8"	16"	2#5 CONT



**TYP INT COLUMN ISOLATION JOINT DETAIL**  
N.T.S.



**TYP EXT COLUMN ISOLATION JOINT DETAIL**  
N.T.S.



**TYP THICKENED SLAB DETAIL AT INTERIOR CMU PARTITION U.N.O.**  
N.T.S.

