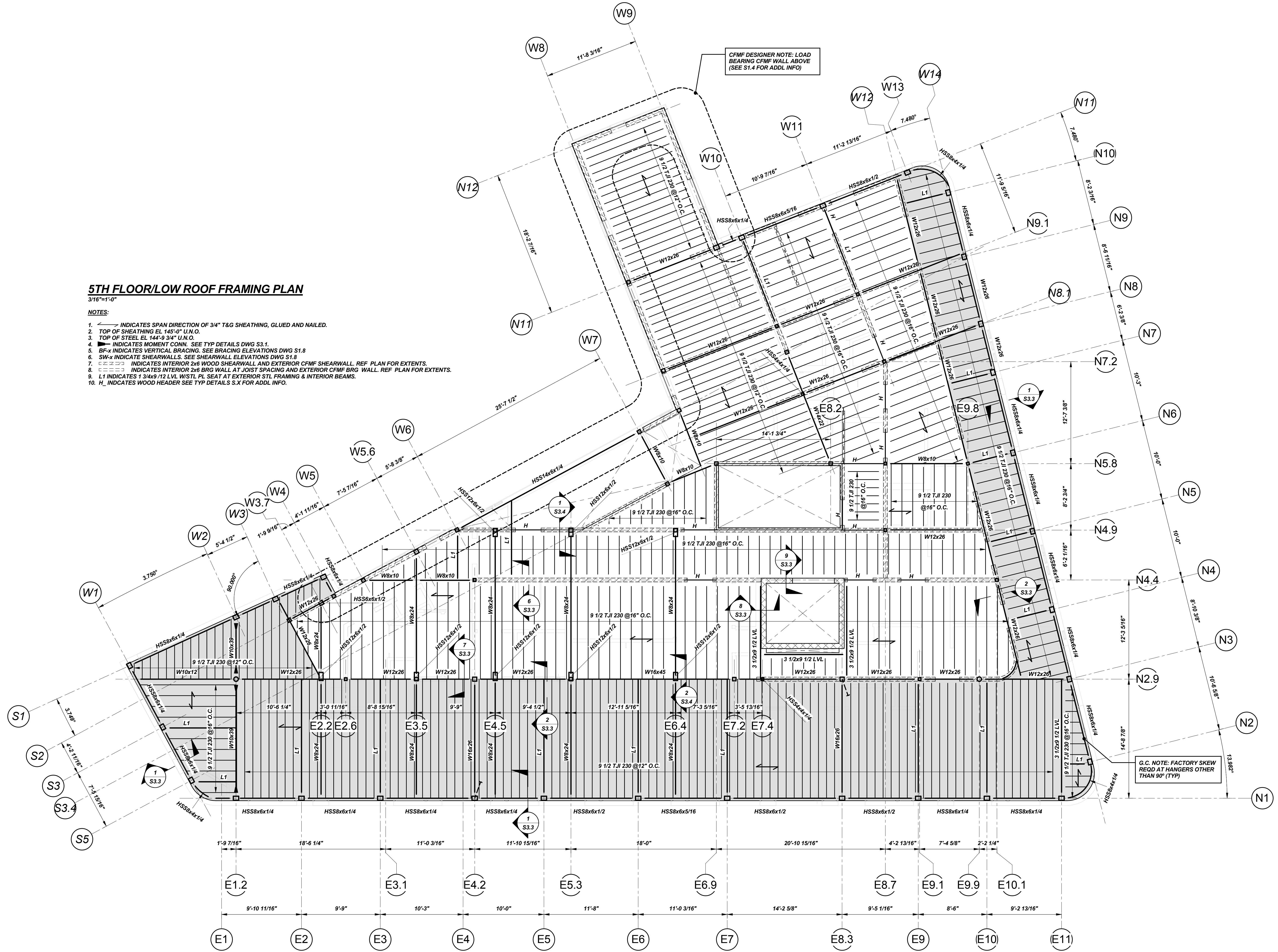


**5TH FLOOR/LOW ROOF FRAMING PLAN**  
3/16"=1'-0"

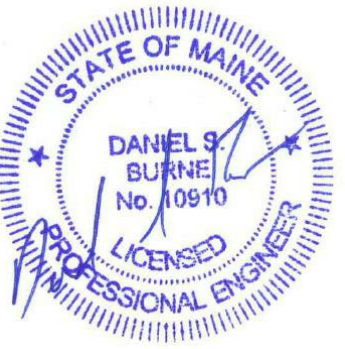
**NOTES:**

1. INDICATES SPAN DIRECTION OF 3/4" T&G SHEATHING, GLUED AND NAILED.
2. TOP OF SHEATHING EL 145'-0" U.N.O.
3. TOP OF STEEL EL 144'-9 3/4" U.N.O.
4. INDICATES MOMENT CONN. SEE TYP DETAILS DWG S3.1.
5. BF-x INDICATES VERTICAL BRACING. SEE BRACING ELEVATIONS DWG S1.8.
6. SW-x INDICATES SHEARWALLS. SEE SHEARWALL ELEVATIONS DWG S1.8.
7. INDICATES INTERIOR 2x6 WOOD SHEARWALL AND EXTERIOR CFMF SHEARWALL. REF PLAN FOR EXTENTS.
8. INDICATES INTERIOR 2x6 BRG WALL AT JOIST SPACING AND EXTERIOR CFMF BRG WALL. REF PLAN FOR EXTENTS.
9. L1 INDICATES 1 3/4x9 1/2 LVL W/STL PL SEAT AT EXTERIOR STL FRAMING & INTERIOR BEAMS.
10. H\_ INDICATES WOOD HEADER SEE TYP DETAILS S.X FOR ADDL INFO.

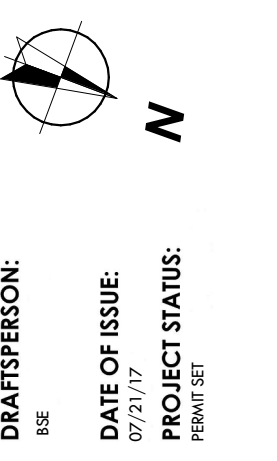


CFMF DESIGNER NOTE: LOAD BEARING CFMF WALL ABOVE (SEE S1.4 FOR ADDL INFO)

G.C. NOTE: FACTORY SKEW REQD AT HANGERS OTHER THAN 90° (TYP)



**PERMIT SET**



DRAFTSPERSON: [Blank]  
DATE OF ISSUE: 07/21/19  
PROJECT STATUS: [Blank]

**221 Congress Street**  
Hay Runner, LLC  
221 Congress Street Portland ME 04101