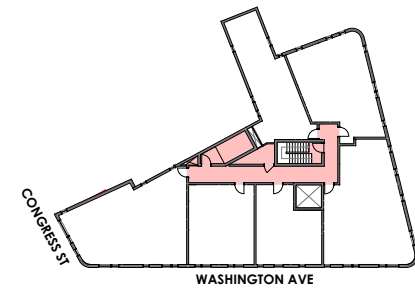


UNIT FLOOR PLAN ENLARGEMENT GENERAL NOTES

- These Drawings constitute a design progress set. Additional information, dimensions and specifications will be provided by the Architect and/or Owner at a later date or as requested with estimate for clarification.
- Dimensions on these 1/2" scale floor plans are from stud-to-stud, UNO.
- Project Specifications. Refer to Project Manual for project specifications, where discrepancies exist between specifications and Drawings, consult with Architect for clarification.
- MEP: Mechanical, Electrical and Plumbing work is to be design build by the Contractor. The Architect and Mechanical Engineer consultant have provided design-build performance specifications and has made basic assumptions for size and space requirements and locations for incoming service. Contractor is to review and bring to the Architect's attention if additional information is required.
- Automatic Sprinkler System: New NFPA 13 sprinkler system is design-build by the sprinkler subcontractor. Refer to specifications for more information.
- Fire alarms systems, emergency lighting, smoke detection, etc are design-build by the subcontractor and/or fire alarm subcontractor, refer to Life Safety sheets, locations TBD, quantities by FA subcontractor. Drawings show Architect's intent. Refer to specifications for additional information.
- Gas Fireplace, typical all units.
- All showers to receive glass surround.
- Built-in Linen closets to have five adjustable painted MDF shelves.
- Finishes: See Finish Schedule on sheet A-0.6.
- Closets to receive wood rod and painted MDF shelf UNO.

KEY PLAN



RCP GENERAL NOTES

- All sprinkler piping is to be concealed above ceiling and provide fully recessed heads with the following exceptions:
 - Where wall mounted to serve rooms, heads may be semi-recessed.
 - In locations where no finished ceiling exists.
- Refer to A-0.6 for light fixture schedule.
- All access panels through drywall to be Baucos Plus II mud-in type unless otherwise noted.

CEILING HEIGHT LEGEND

- Gyp Ceiling light to underside of structure
 - 8'-11 3/4" AFF at 2nd and 3rd Floors
 - 9'-11 3/4" AFF at 4th Floors

- Suspended Gyp Ceiling installed at lower heights under structural beams and to allow install of new MEP work
 - 8'-0" AFF at 2nd and 3rd Floors, UNO
 - 9'-0" AFF at 4th Floors, UNO
- Ceiling Height AFF

MECH LEGEND

Mechanical, Electrical and Plumbing work is to be design build by the Contractor. The Architect and Mechanical Engineer have provided design-build performance specifications and has made basic assumptions for size and space requirements and locations for incoming service. Contractor is to review and bring to the Architect's attention if additional information is required.

- Proposed Ducting Route
- Proposed Exhaust Route
- Proposed Refrigerant Linesets to Roof
- Proposed Location of Indoor Mini Split

FIRE ALARM DEVICE KEY

- Exit Sign
 - Emergency Lighting
 - Fire Extinguisher
 - Fire Strobe A/V Device
 - Manual Pull Station
 - *Smoke Detector (Interconnected)
- *All sleeping rooms are to be provided with combination smoke and carbon monoxide detectors

GENERAL FIRE ALARM NOTES:
 1. Drawings herein show general intent for placement of Fire Alarm devices. Fire Alarm contractor is responsible for quantities and locations as required by building code. Design shall also comply with Portland City Code Chapter 10 and Fire Department Regulations. Refer to Specifications for additional requirements.
 2. Fire Alarm Contractor shall submit shop drawings for Architect's review and obtain Fire Alarm Permit from the City of Portland.

ELECTRICAL GENERAL NOTES

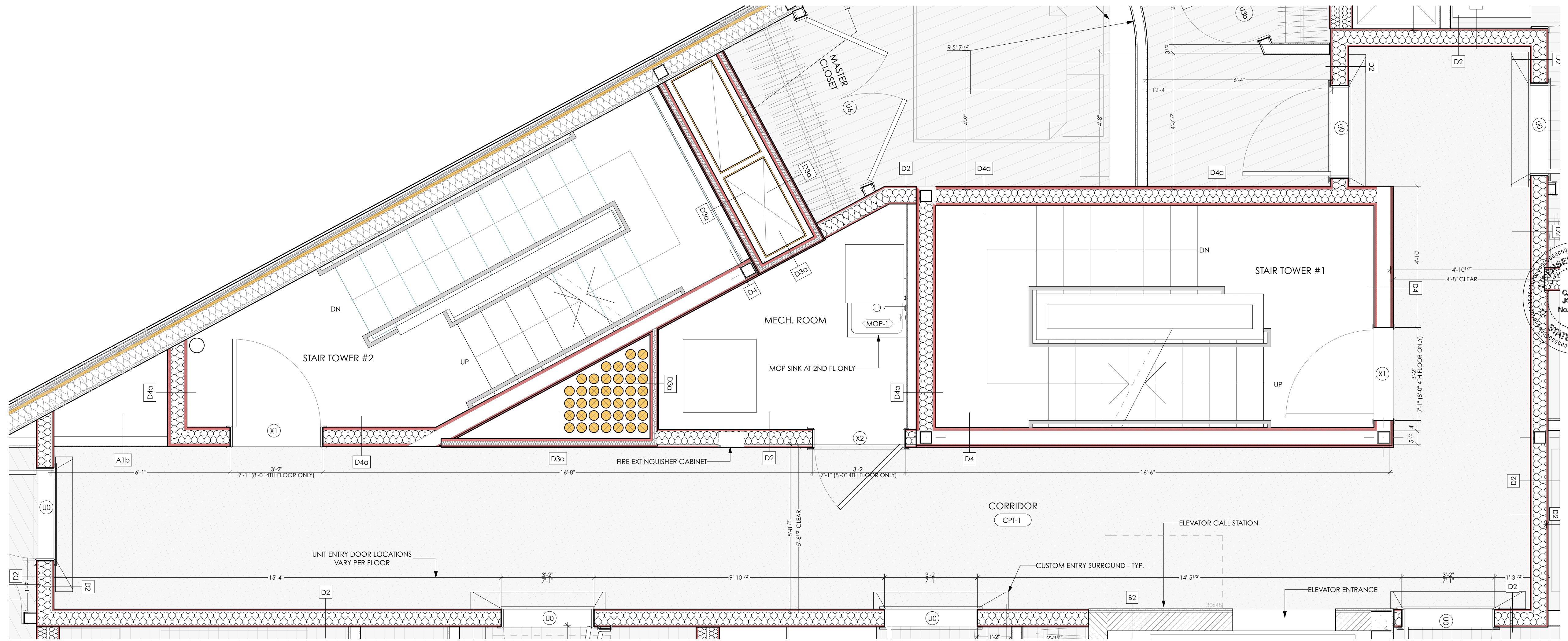
- Electrical to be Design Build by Contractor and coordinated with Owner based on the design intent shown in these drawings. All new work is to be installed in conformance with NFPA 70 and all other applicable codes. Refer to performance specifications for more information.
- Provide new white cover plates, switches and outlets throughout where new.

ELECTRICAL LEGEND

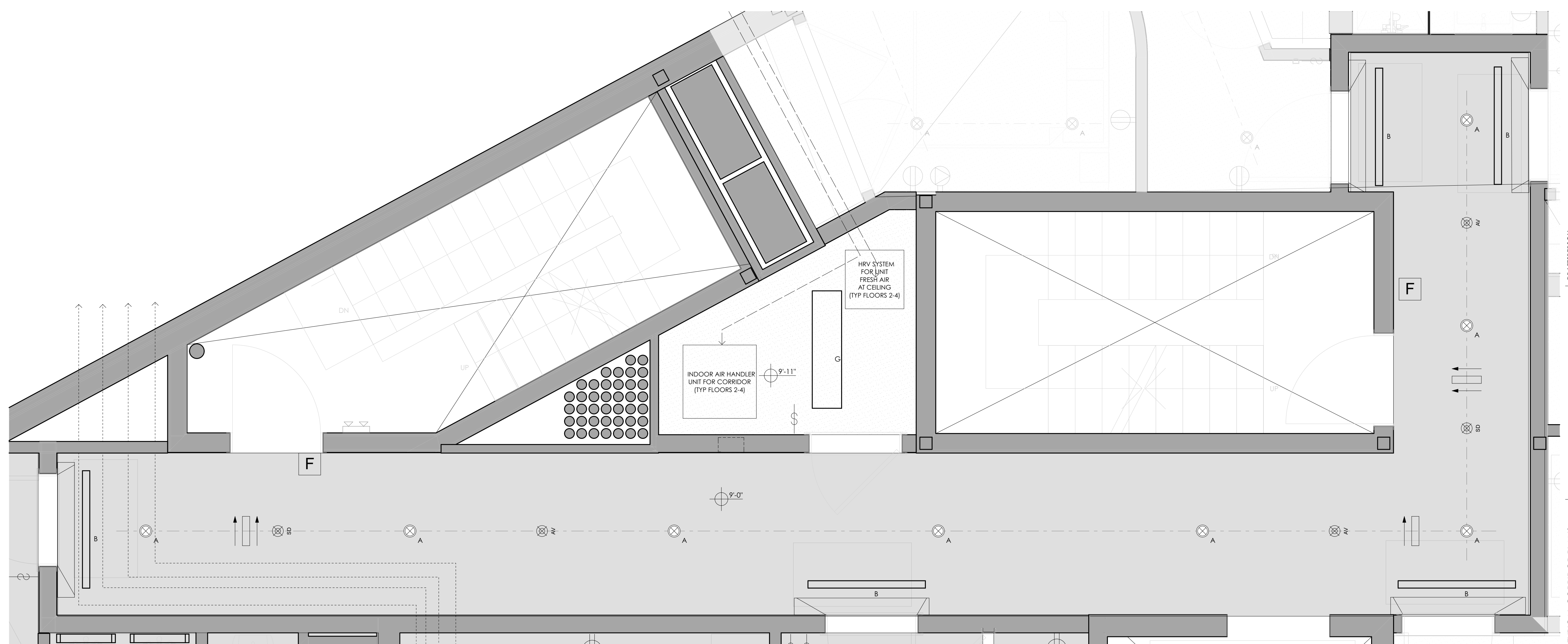
- Device locations on plans are shown to provide Architect's design intent. Locations, spacing, etc are to be verified by the Electrical design-build engineer and are to follow all local codes as required. Consult with Architect for required clarifications.
- Duplex Outlet
 - GFCI Duplex Outlet
 - Quad Outlet
 - Dimmer Switch
 - Toggle Switch
 - TV Location, Provide Cable/Data and Duplex Outlet
 - Exhaust Fan

LIGHT FIXTURE TYPE LEGEND

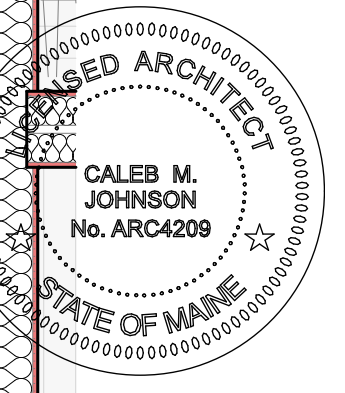
- See lighting schedule
- Wall Sconce
 - Recessed Down Light
 - Surface Mounted Light
 - Pendant
 - Strip Fixture



1 TYPICAL CORRIDOR FLOORS 2-4
SCALE: 1/2" = 1'-0"



2 TYPICAL CORRIDOR RCP, FLOORS 2-4
SCALE: 1/2" = 1'-0"



PERMIT SET

DRAFTER:
Patrick Boehme, AIA
John Jacques
DATE OF ISSUE:
7/21/17
PROJECT STATUS:
Permit Set

221 Congress Street
Hay Runner Block
221 BLOCK, LLC
221 Congress Street Portland ME 04101

TYPICAL CORRIDOR PLANS
A-5.9