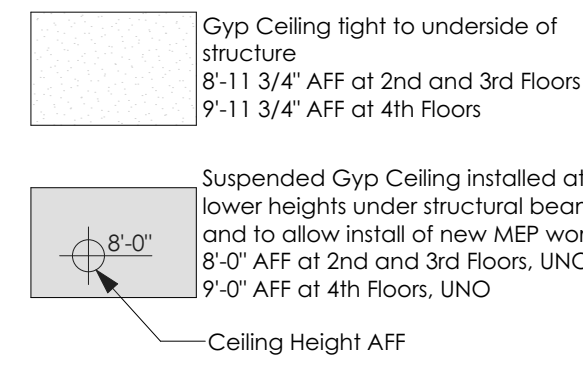


RCP GENERAL NOTES

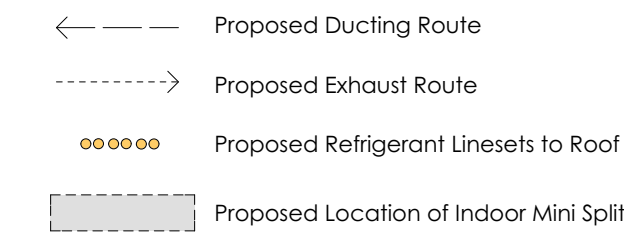
- All sprinkler piping is to be concealed above ceiling and provide fully recessed heads with the following exceptions:
 - Where wall mounted to serve rooms, heads may be semi-recessed.
 - In locations where no finished ceiling exists
- Refer to A-0.6 for light fixture schedule
- All access panels through drywall to be Bauco Plus II mud-in type unless otherwise noted

CEILING HEIGHT LEGEND

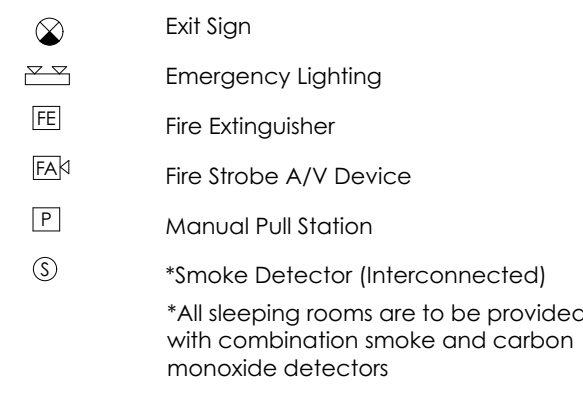


MECH LEGEND

Mechanical, Electrical and Plumbing work is to be design build by the Contractor. The Architect and Mechanical Engineer have provided design-build performance specifications and has made basic assumptions for size and space requirements and locations for incoming service. Contractor is to review and bring to the Architect's attention if additional information is required.



FIRE ALARM DEVICE KEY

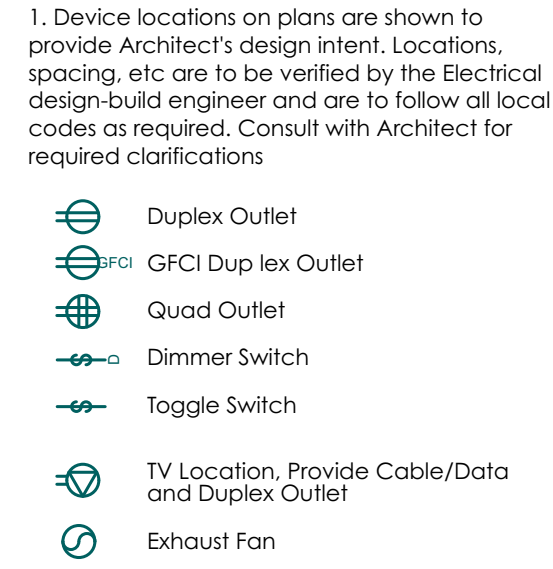


GENERAL FIRE ALARM NOTES:
1. Drawings herein show general intent for placement of Fire Alarm devices. Fire Alarm contractor is responsible for quantities and locations as required by building code. Design shall also comply with Portland City Code Chapter 10 and Fire Department Regulations. Refer to Specifications for additional requirements.
2. Fire Alarm Contractor shall submit shop drawings for Architect's review and obtain Fire Alarm Permit from the City of Portland.

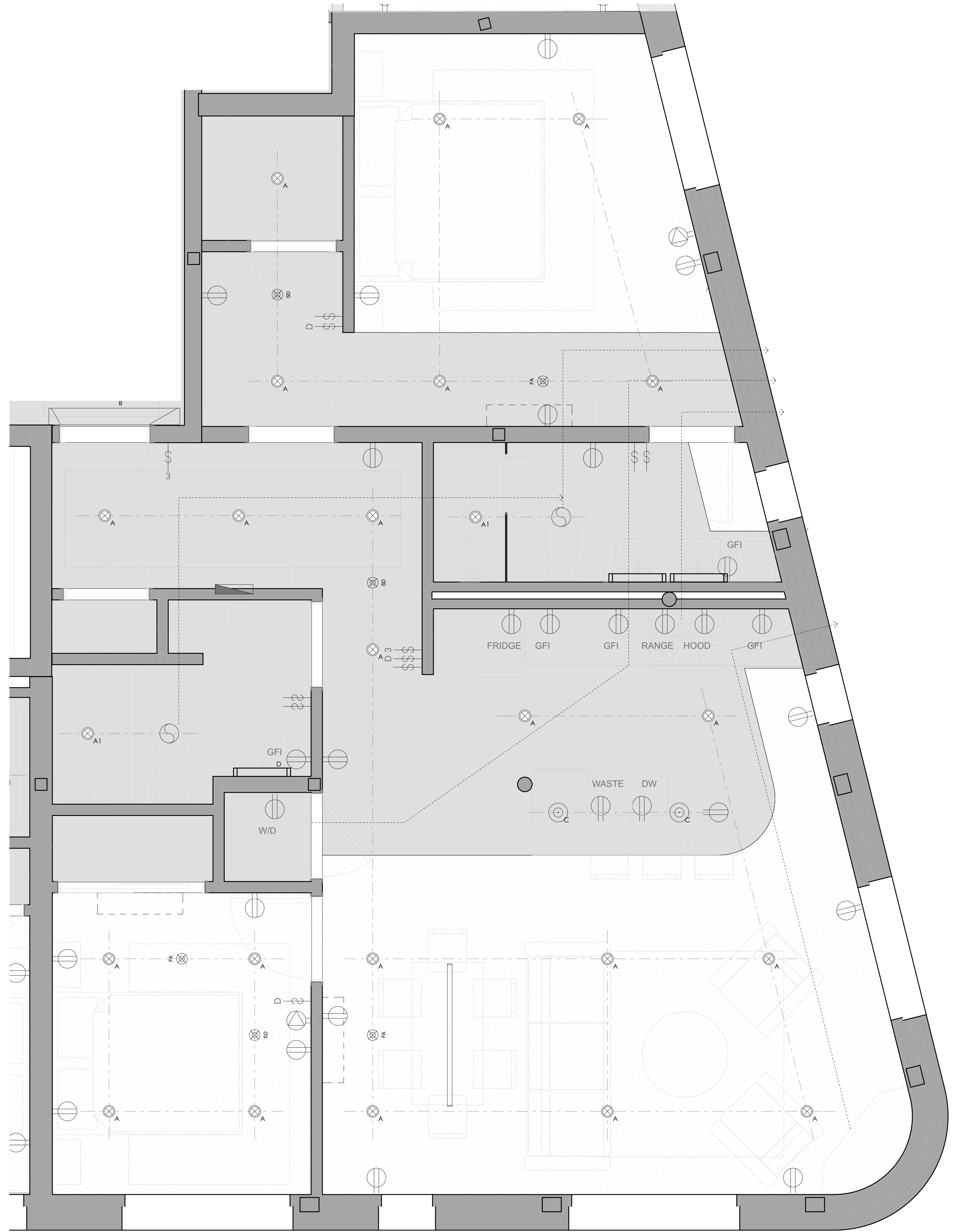
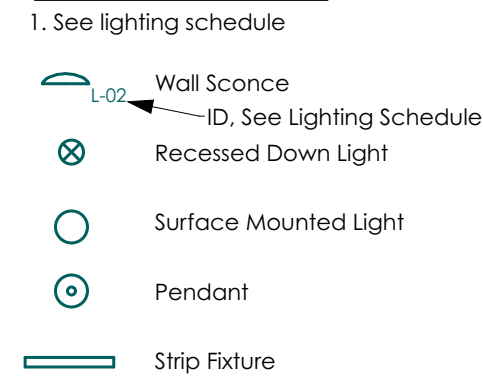
ELECTRICAL GENERAL NOTES

- Electrical to be Design Build by Contractor and coordinated with Owner based on the design intent shown in these drawings. All new work is to be installed in conformance with NFPA 70 and all other applicable codes. Refer to performance specifications for more information.
- Provide new white cover plates, switches and outlets throughout where new.

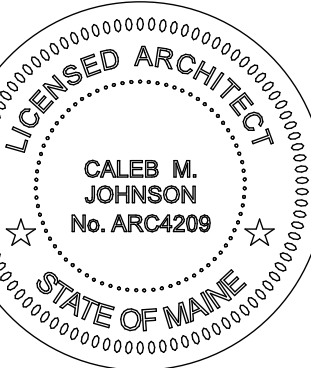
ELECTRICAL LEGEND



LIGHT FIXTURE TYPE LEGEND



1 TIER D UNIT LAYOUTS
SCALE: 1/2" = 1'-0"



PERMIT SET

DRAFTER/PERSON:
Patrick Boehme, AIA
John Jacques
DATE OF ISSUE:
7/21/17
PROJECT STATUS:
Permit Set

**221 Congress Street
Hay Runner Block**
221 BLOCK, LLC
221 Congress Street Portland ME 04101

TIER D UNIT RCP
A-5.3a