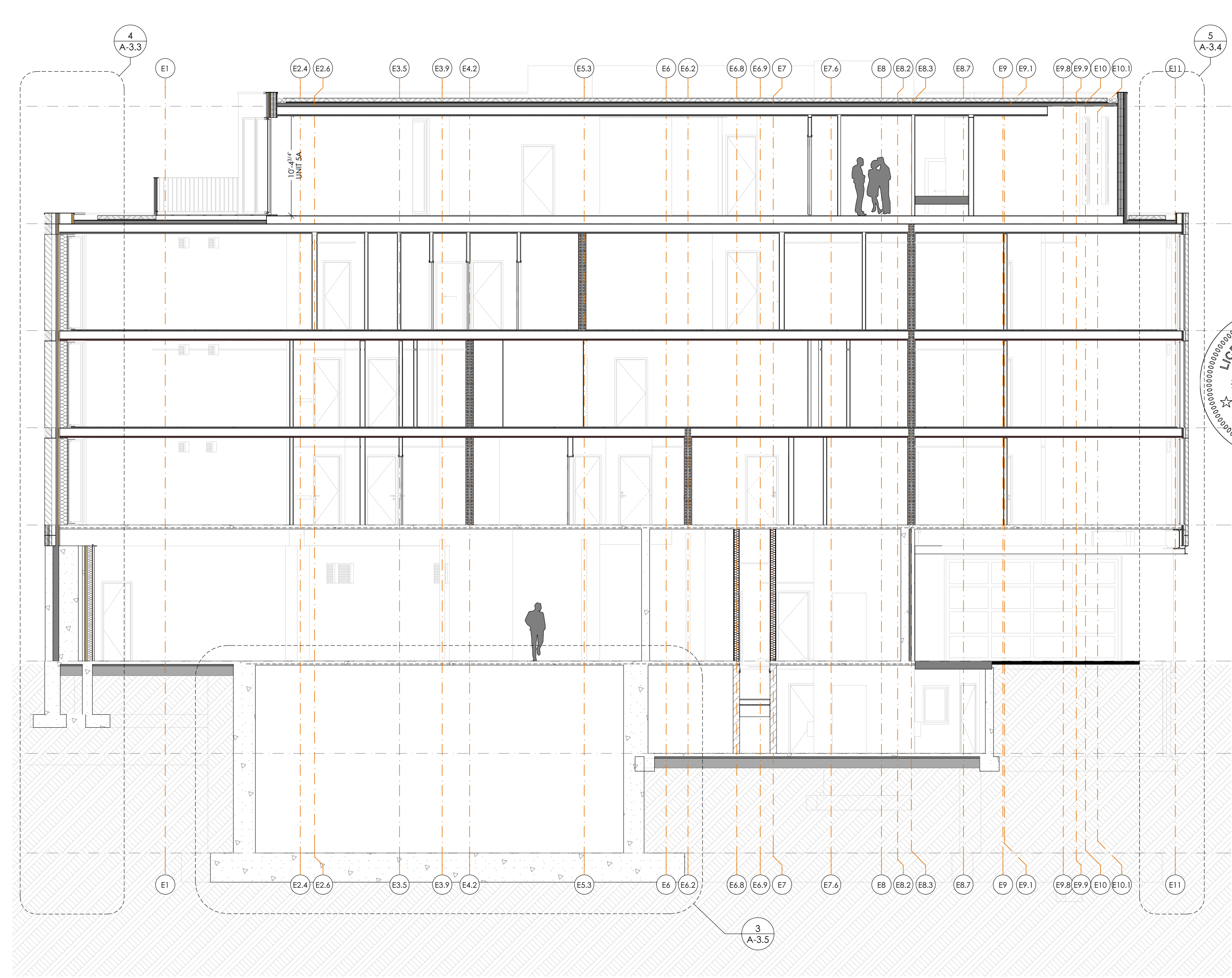
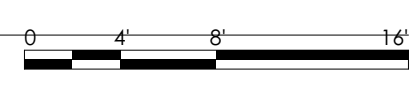
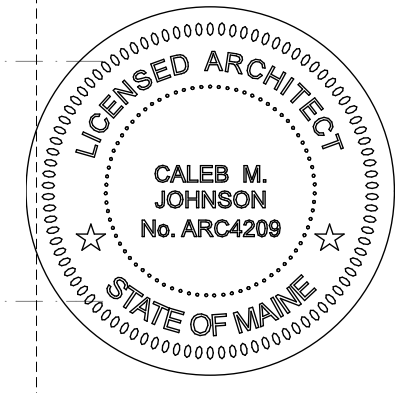
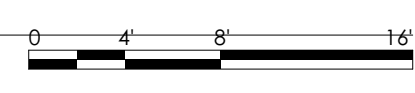


1 LONGITUDINAL SECTION THRU PARKING
SCALE: 1/8" = 1'-0"



2 LONGITUDINAL BUILDING SECTION
SCALE: 1/8" = 1'-0"



PERMIT SET

drafter:
Patrick Boehmer, AIA
John Jacques
DATE OF ISSUE:
7/21/17
PROJECT STATUS:
Permit Set

221 Congress Street
Hay Runner Block
221 BLOCK, LLC
221 Congress Street Portland ME 04101