

**RCP GENERAL NOTES**

- All sprinkler piping is to be concealed above ceiling and provide fully recessed heads with the following exceptions:
  - Where wall mounted to serve rooms, heads may be semi-recessed.
  - In locations where no finished ceiling exists
- Refer to A-0.6 for light fixture schedule
- All access panels through drywall to be Bauco Plus II mud-in type unless otherwise noted

**CEILING HEIGHT LEGEND**

- Gyp Ceiling light to underside of structure  
8'-11 3/4" AFF at 2nd and 3rd Floors  
9'-11 3/4" AFF at 4th Floors
- Suspended Gyp Ceiling installed at lower heights under structural beams and to allow install of new MEP work  
8'-0" AFF at 2nd and 3rd Floors, UNO  
9'-0" AFF at 4th Floors, UNO

**MECH LEGEND**

Mechanical, Electrical and Plumbing work is to be design build by the Contractor. The Architect and Mechanical Engineer have provided design-build performance specifications and has made basic assumptions for size and space requirements and locations for incoming service. Contractor is to review and bring to the Architect's attention if additional information is required.

- Proposed Ducting Route
- Proposed Exhaust Route
- Proposed Refrigerant Linesets to Roof
- Proposed Location of Indoor Mini Split

**FIRE ALARM DEVICE KEY**

- Exit Sign
- Emergency Lighting
- Fire Extinguisher
- Fire Strobe A/V Device
- Manual Pull Station
- \*Smoke Detector (Interconnected)
- \*All sleeping rooms are to be provided with combination smoke and carbon monoxide detectors

**GENERAL FIRE ALARM NOTES:**  
 1. Drawings herein show general intent for placement of Fire Alarm devices. Fire Alarm contractor is responsible for quantities and locations as required by building code. Design shall also comply with Portland City Code Chapter 10 and Fire Department Regulations. Refer to Specifications for additional requirements.  
 2. Fire Alarm Contractor shall submit shop drawings for Architect's review and obtain Fire Alarm Permit from the City of Portland.

**ELECTRICAL GENERAL NOTES**

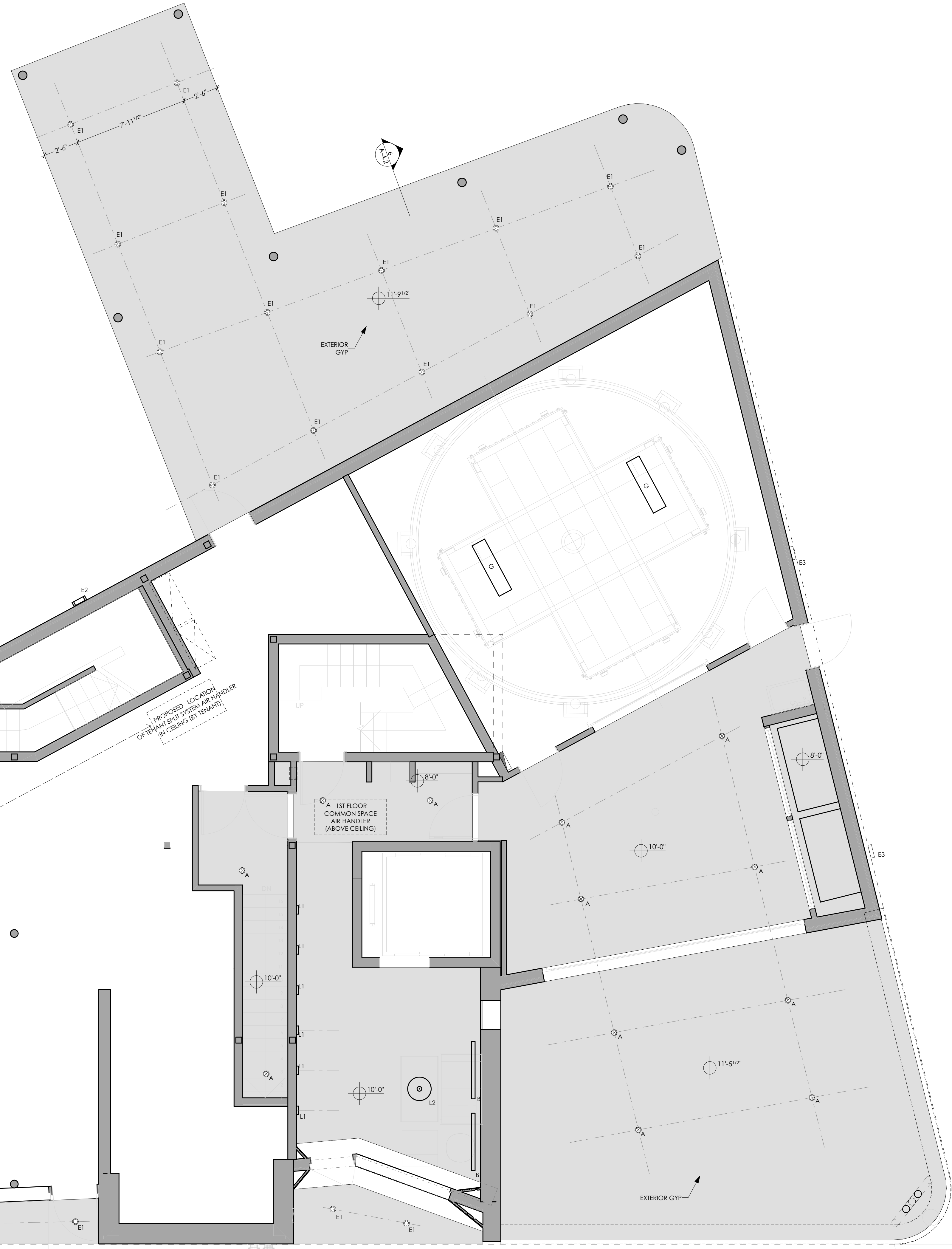
- Electrical to be Design Build by Contractor and coordinated with Owner based on the design intent shown in these drawings. All new work is to be installed in conformance with NFPA 70 and all other applicable codes. Refer to performance specifications for more information.
- Provide new white cover plates, switches and outlets throughout where new.

**ELECTRICAL LEGEND**

- Device locations on plans are shown to provide Architect's design intent. Locations, spacing, etc are to be verified by the Electrical design-build engineer and are to follow all local codes as required. Consult with Architect for required clarifications
- Duplex Outlet
  - GFCI Duplex Outlet
  - Quad Outlet
  - Dimmer Switch
  - Toggle Switch
  - TV Location, Provide Cable/Data and Duplex Outlet
  - Exhaust Fan

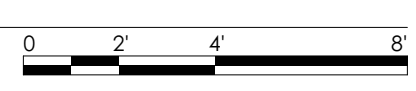
**LIGHT FIXTURE TYPE LEGEND**

- See lighting schedule
- Wall Sconce
  - Recessed Down Light
  - Surface Mounted Light
  - Pendant
  - Strip Fixture



CONTRACTOR TO PROVIDE TEMPORARY LIGHTING ONLY TO TENANT SPACE  
 FINISH CEILING BY TENANT

1 PROPOSED 1ST FLOOR RCP  
 SCALE: 1/4" = 1'-0"



**PERMIT SET**

**DRAFTSPERSON:**  
 Patrick Boehme, AIA  
 Josh Jacques  
**ISSUE:**  
 7/21/17  
**PROJECT STATUS:**  
 Permit Set

**221 Congress Street**  
**Hay Runner Block**  
 221 BLOCK, LLC  
 221 Congress Street Portland ME 04101

**1ST FLOOR RCP**  
**A-1.1a**