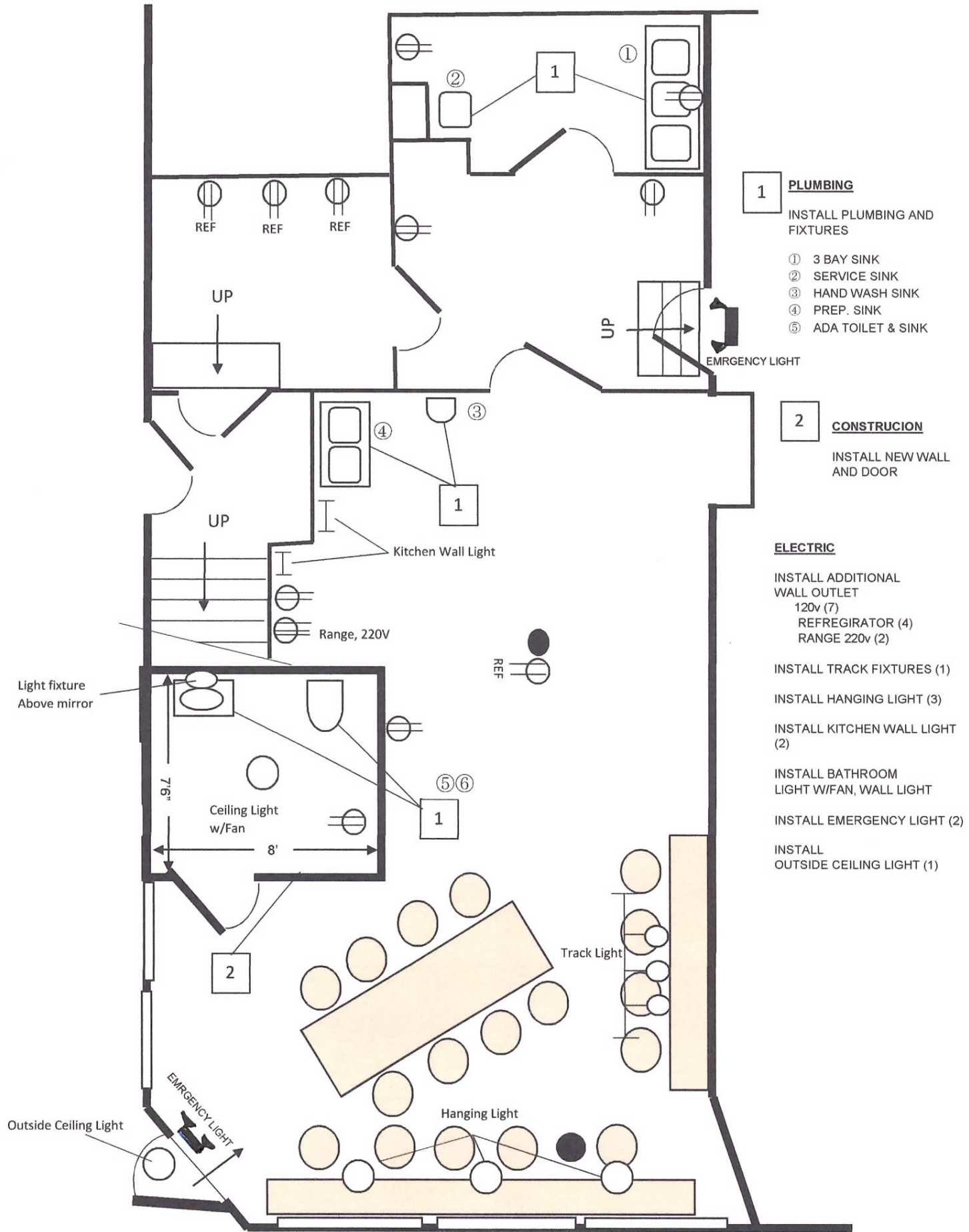


PROPOSAL FLOOR PLAN FOR 229 CONGRESS ST., PORTLAND, ME



- 1 PLUMBING**
 INSTALL PLUMBING AND FIXTURES
- ① 3 BAY SINK
 - ② SERVICE SINK
 - ③ HAND WASH SINK
 - ④ PREP. SINK
 - ⑤ ADA TOILET & SINK

- 2 CONSTRUCTION**
 INSTALL NEW WALL AND DOOR

- ELECTRIC**
- INSTALL ADDITIONAL WALL OUTLET 120v (7)
 - REFRIGERATOR (4)
 - RANGE 220v (2)
 - INSTALL TRACK FIXTURES (1)
 - INSTALL HANGING LIGHT (3)
 - INSTALL KITCHEN WALL LIGHT (2)
 - INSTALL BATHROOM LIGHT W/FAN, WALL LIGHT
 - INSTALL EMERGENCY LIGHT (2)
 - INSTALL OUTSIDE CEILING LIGHT (1)

Light fixture Above mirror

7'6"

Ceiling Light w/Fan

8'

Range, 220V

Kitchen Wall Light

Track Light

Hanging Light

Outside Ceiling Light

EMERGENCY LIGHT

EMERGENCY LIGHT